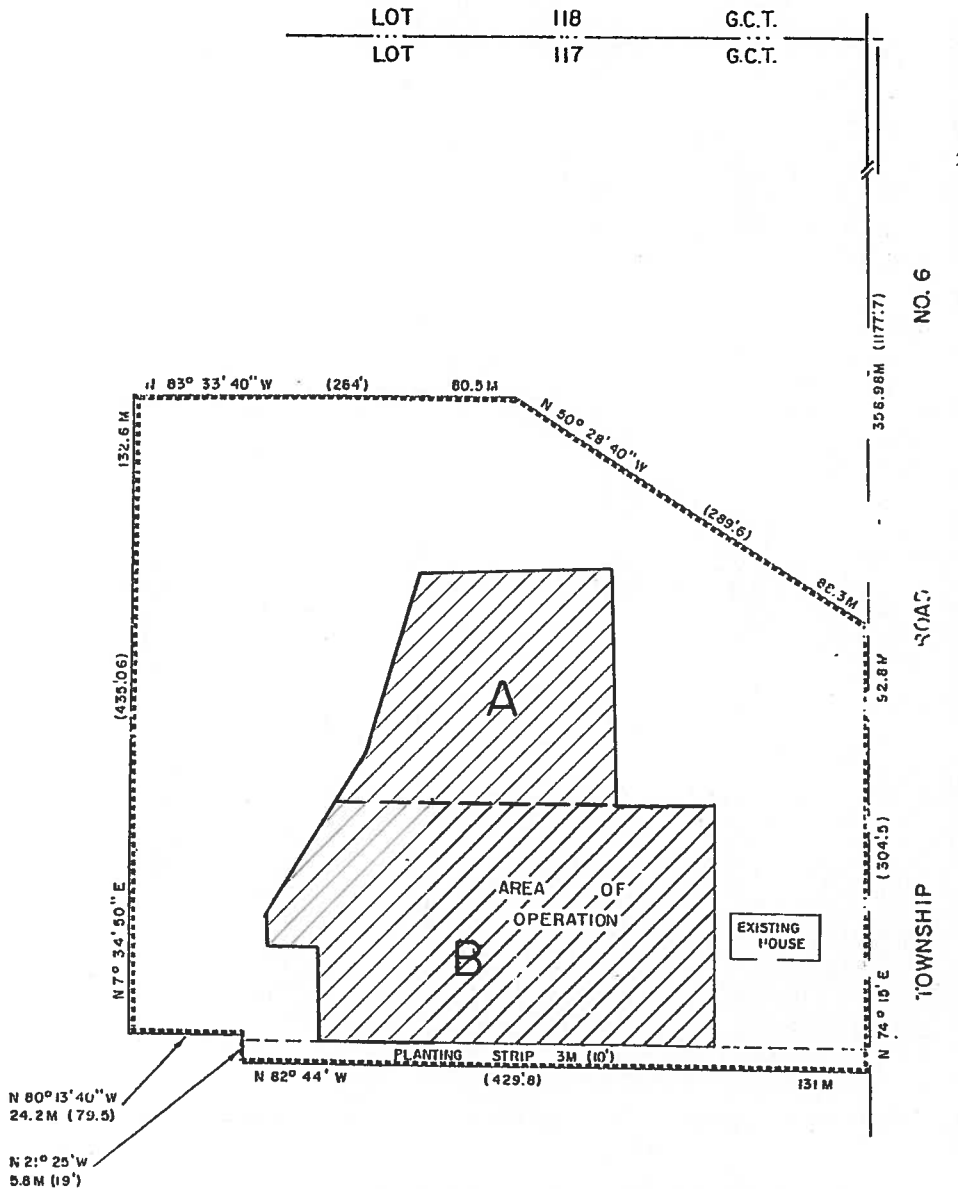
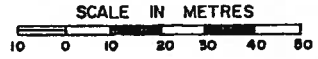


PART OF LOT 117 G.C.T.
(PART I, PLAN 58-R-2883)
TOWNSHIP OF WOOLWICH
(FLORADALE)



NOTE: APPROXIMATE IMPERIAL EQUIVALENTS SHOWN IN BRACKETS.

SUBJECT LANDS OUTLINED THUS

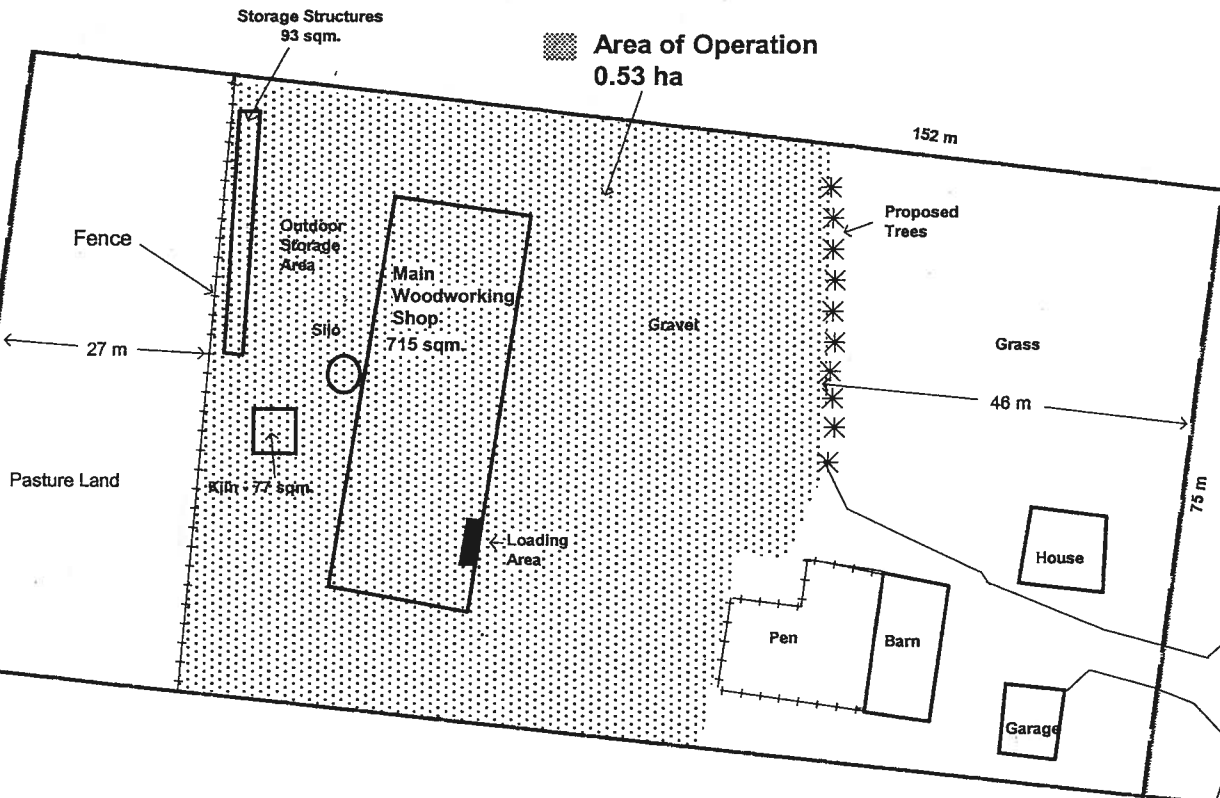


THIS IS SCHEDULE A TO BY-LAW _____,
PASSED THIS ____ DAY OF _____, 198 .

MAYOR _____
CLERK _____

SEE PART I - SCHEDULE 'B'

1236 ARTHUR STREET NORTH PART LOT 94 GCT TOWNSHIP OF WOOLWICH

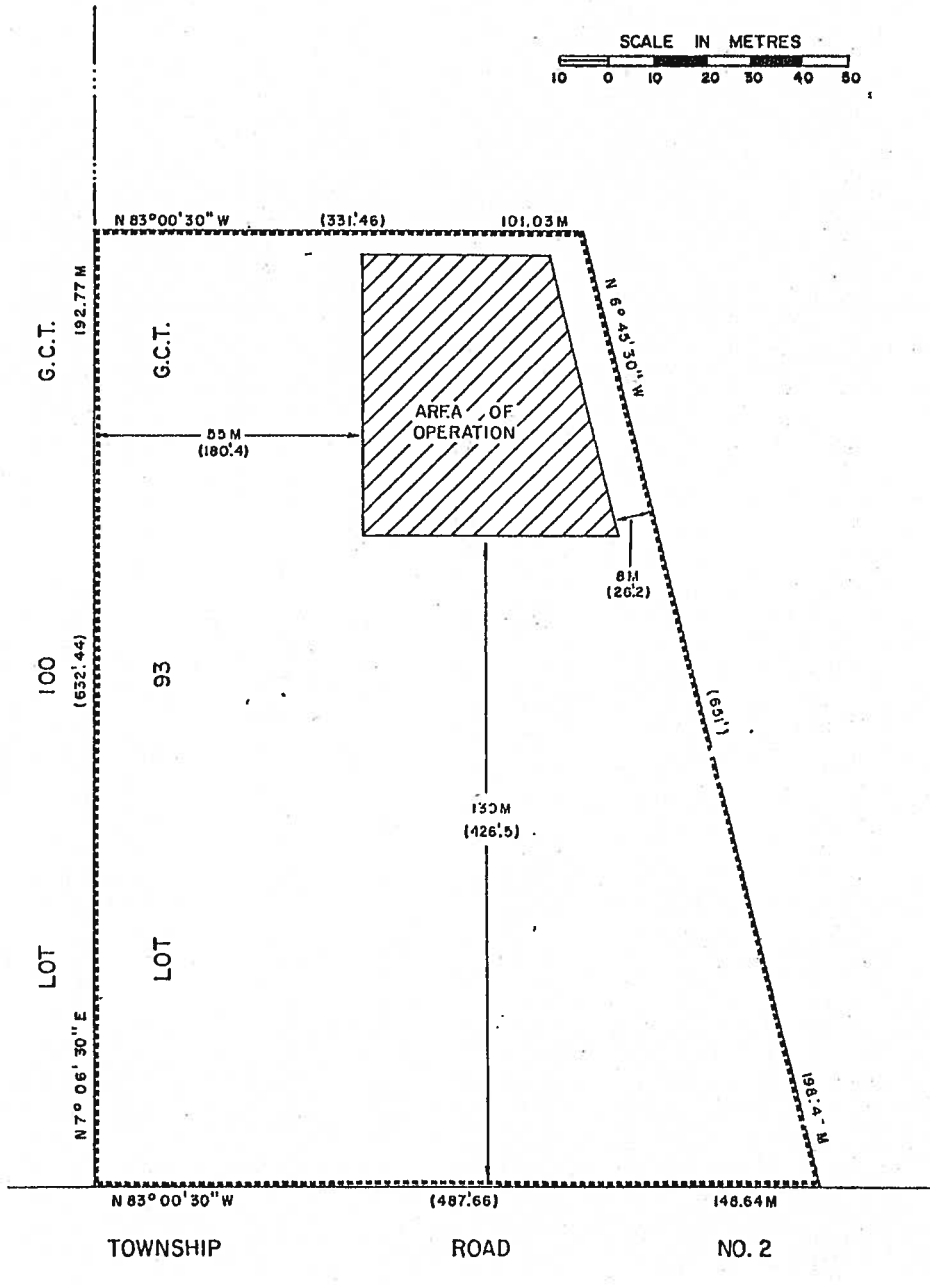


PART OF LOT 93 G.C.T.
TOWNSHIP OF WOOLWICH



NOTE: APPROXIMATE IMPERIAL EQUIVALENTS SHOWN IN BRACKETS.

SUBJECT LANDS OUTLINED THUS



THIS IS SCHEDULE A TO BY-LAW _____,
PASSED THIS _____ DAY OF _____, 198 .

MAYOR

CLERK

PART OF LOT 116 G.C.T.
TOWNSHIP OF WOOLWICH

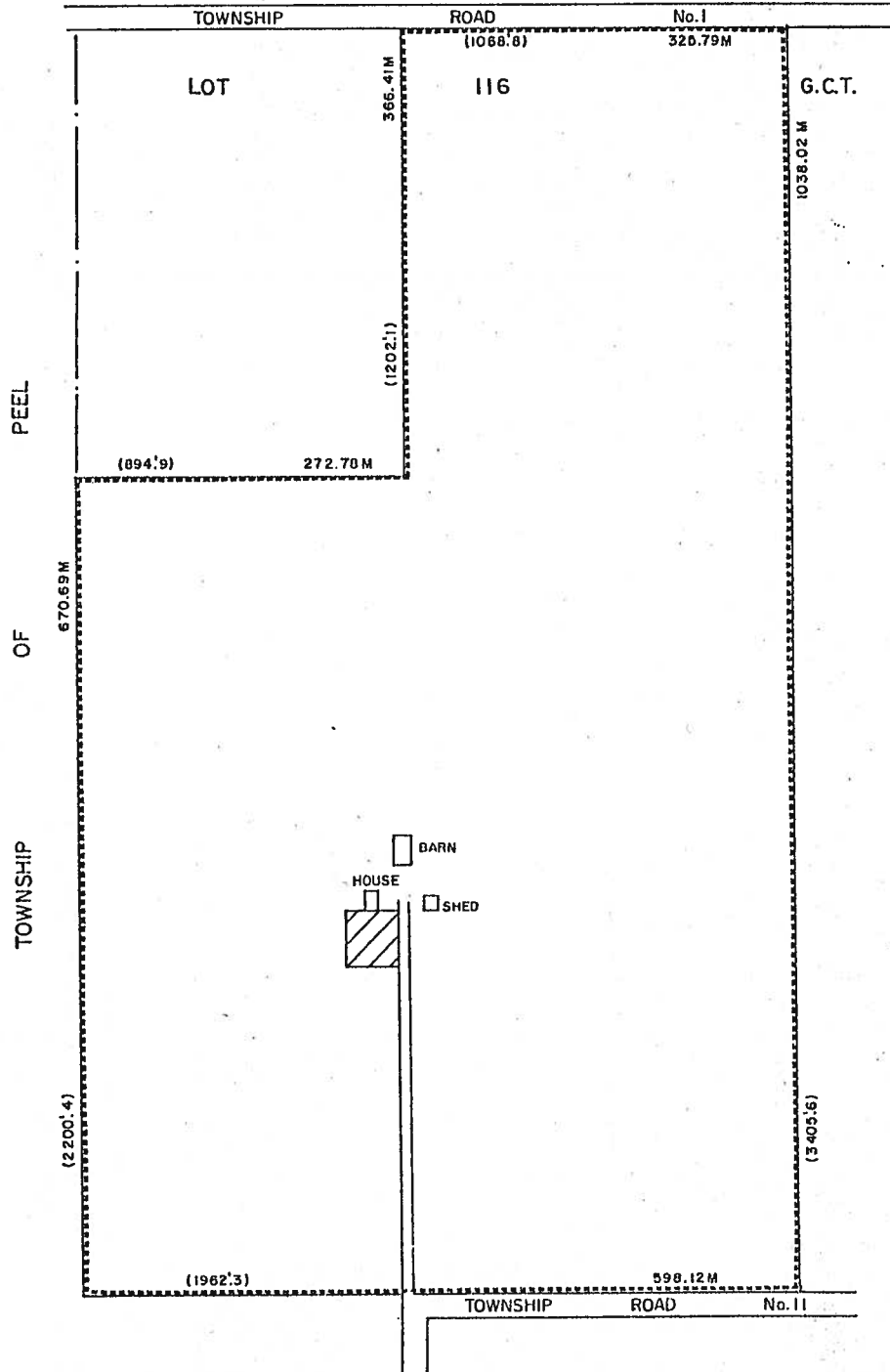


NOTE: APPROXIMATE IMPERIAL EQUIVALENTS SHOWN IN BRACKETS.

AREA OF OPERATION SHOWN THUS

SUBJECT LANDS OUTLINED THUS

LOT 117 G.C.T.



THIS IS SCHEDULE A TO BY-LAW _____,
PASSED THIS _____ DAY OF _____, 198 .

MAYOR

CLERK

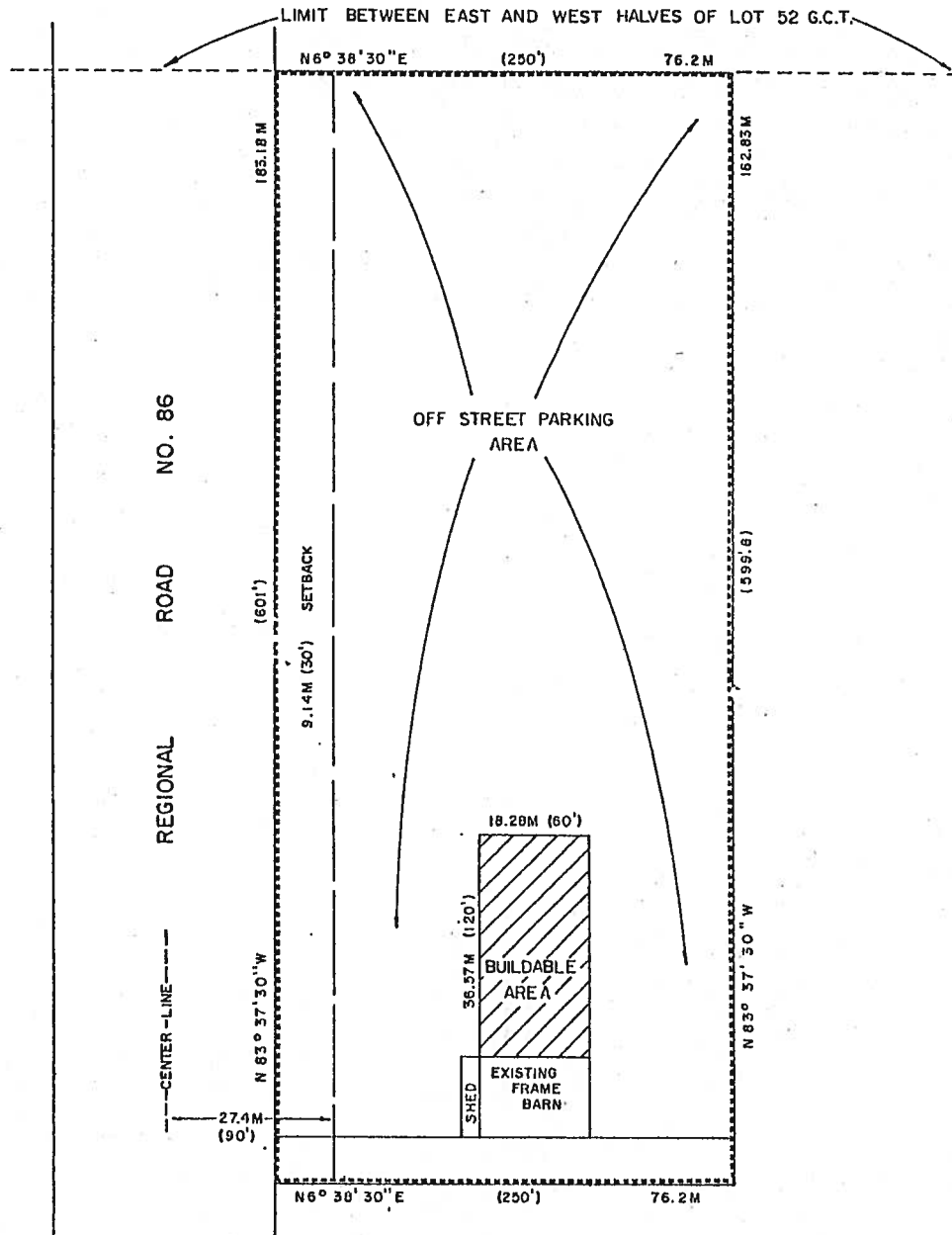
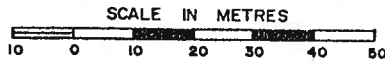
SECTION 26.1.4

PART OF LOT 52 G.C.T. TOWNSHIP OF WOOLWICH



NOTE: APPROXIMATE IMPERIAL EQUIVALENTS SHOWN IN BRACKETS.

SUBJECT LANDS OUTLINED THUS

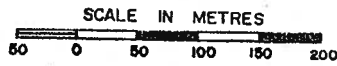




THIS IS SCHEDULE A TO BY-LAW _____,
PASSED THIS _____ DAY OF _____, 198 .

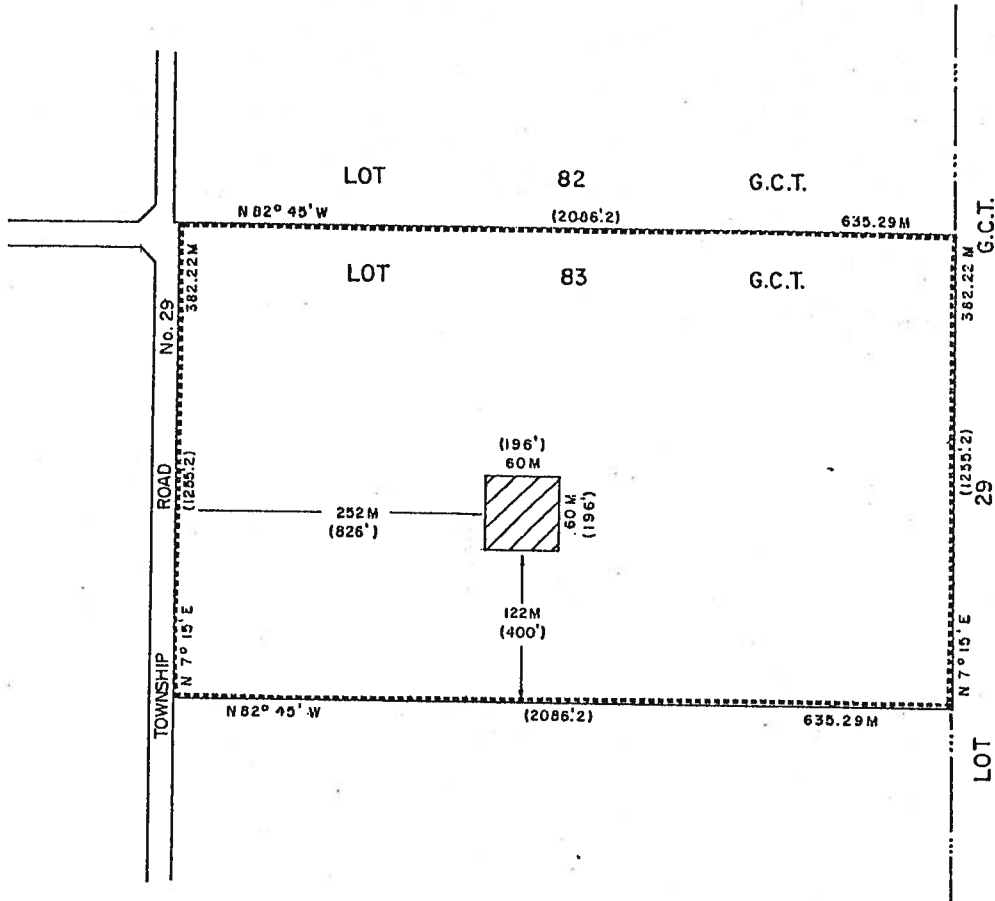
MAYOR

CLERK

PART OF LOT 83 G.C.T.
TOWNSHIP OF WOOLWICH



NOTE : APPROXIMATE IMPERIAL EQUIVALENTS SHOWN IN BRACKETS.
 AREA OF OPERATION SHOWN THUS 
 SUBJECT LANDS OUTLINED THUS 

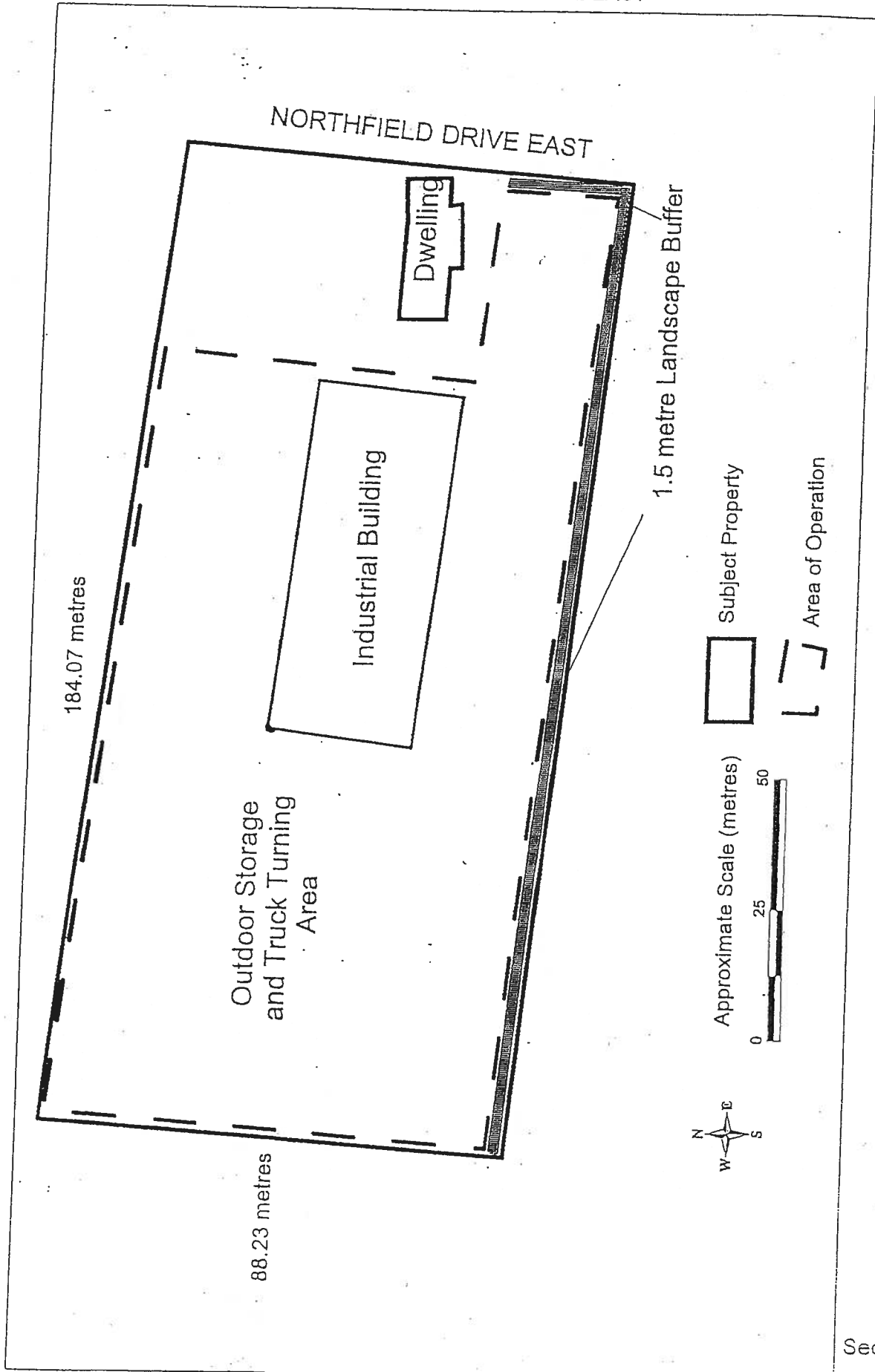


THIS IS SCHEDULE A TO BY-LAW _____,
 PASSED THIS ____ DAY OF _____, 198 .

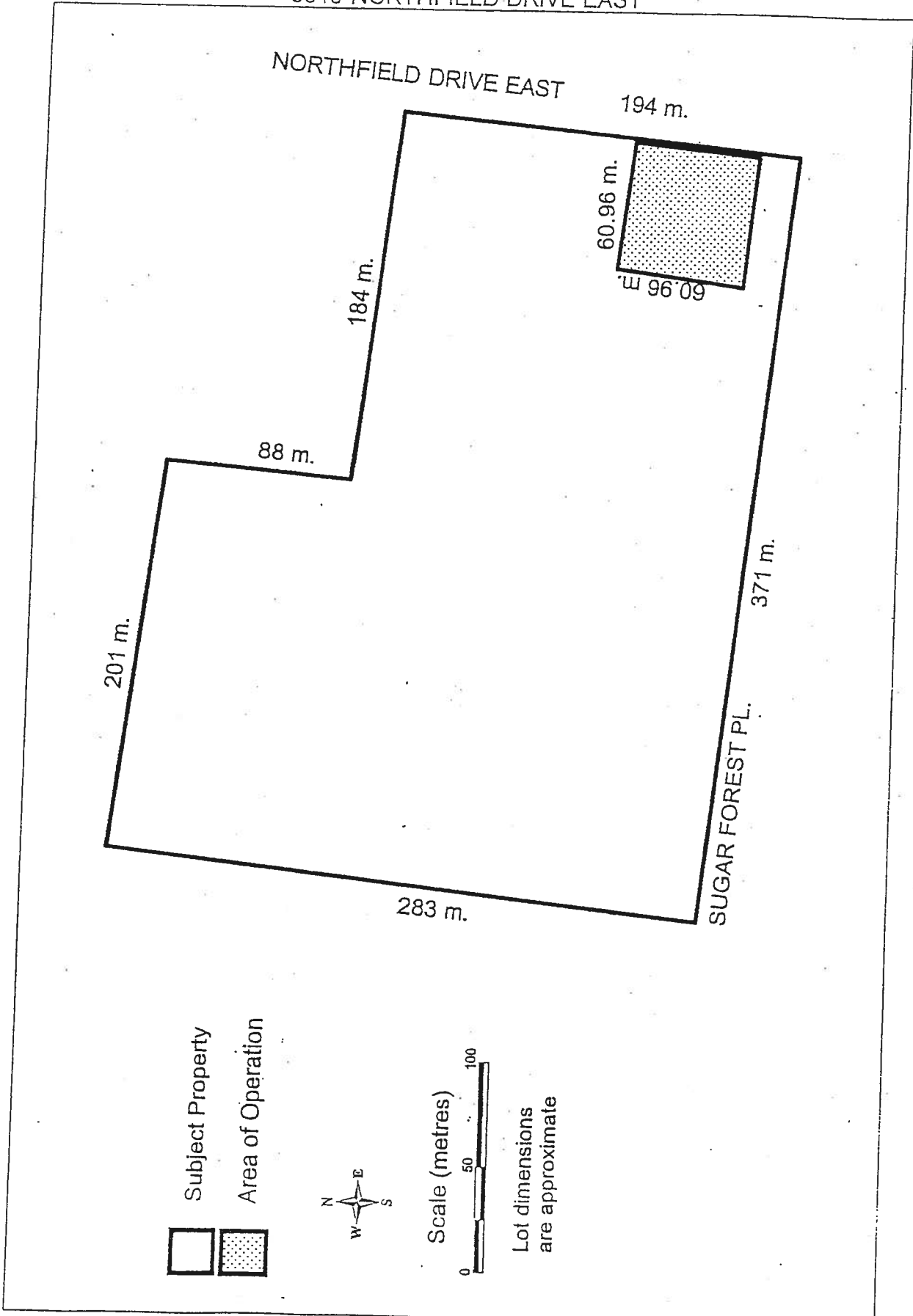
 MAYOR

 CLERK

PART OF LOT 51, GCT
2080 NORTHFIELD DRIVE EAST

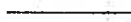
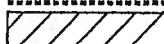


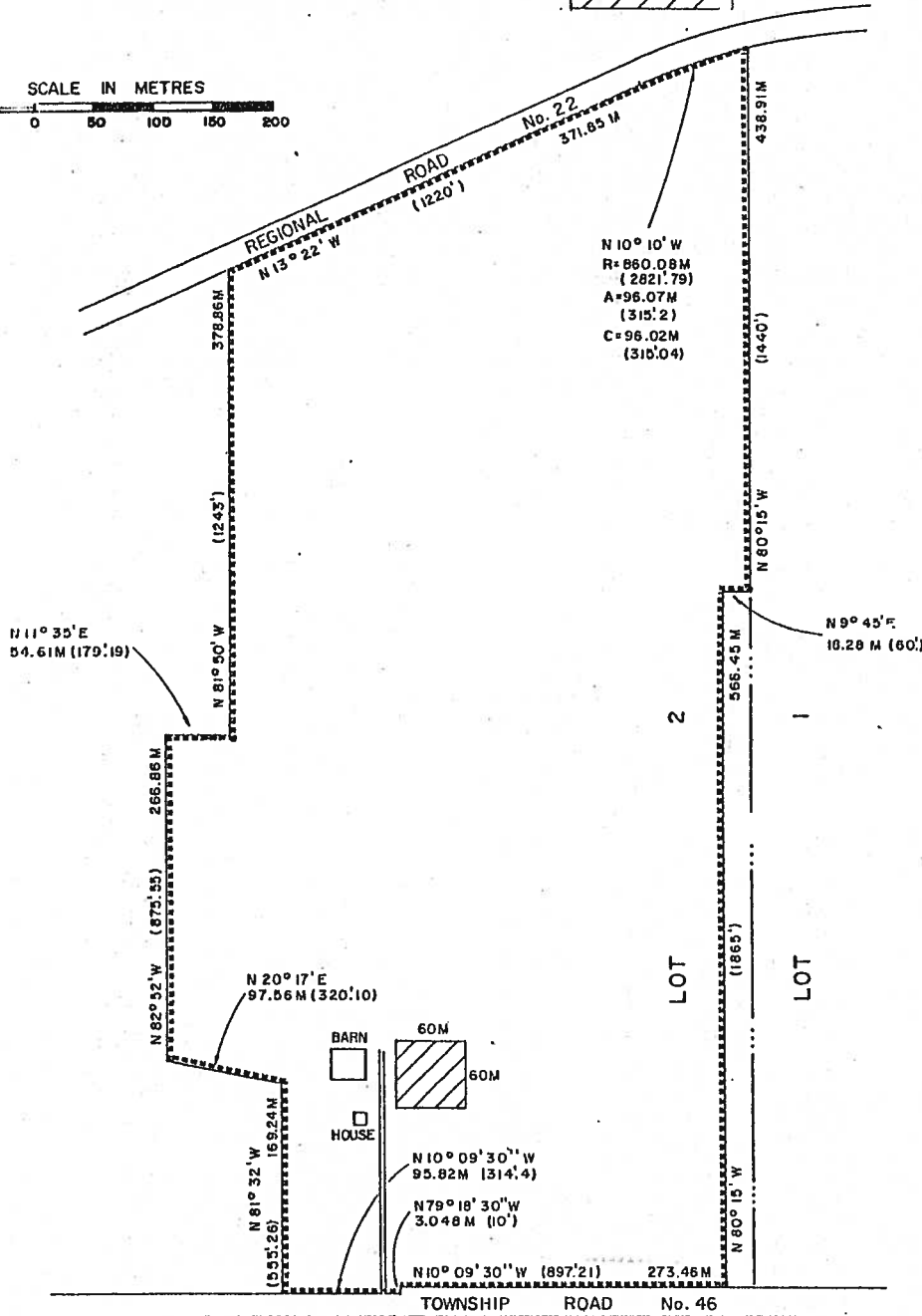
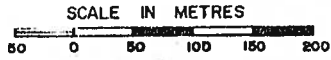
PART OF LOT 51, GCT
5040 NORTHFIELD DRIVE EAST



PART OF LOT 2,
CONCESSION I
CROOK'S TRACT, W.G.R.
TOWNSHIP OF WOOLWICH



NOTE: APPROXIMATE IMPERIAL EQUIVALENTS SHOWN IN BRACKETS.
SUBJECT LANDS OUTLINED THUS 
AREA OF OPERATION SHOWN THUS 

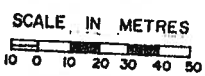


THIS IS SCHEDULE A TO BY-LAW _____,
PASSED THIS ____ DAY OF _____, 198 ____.

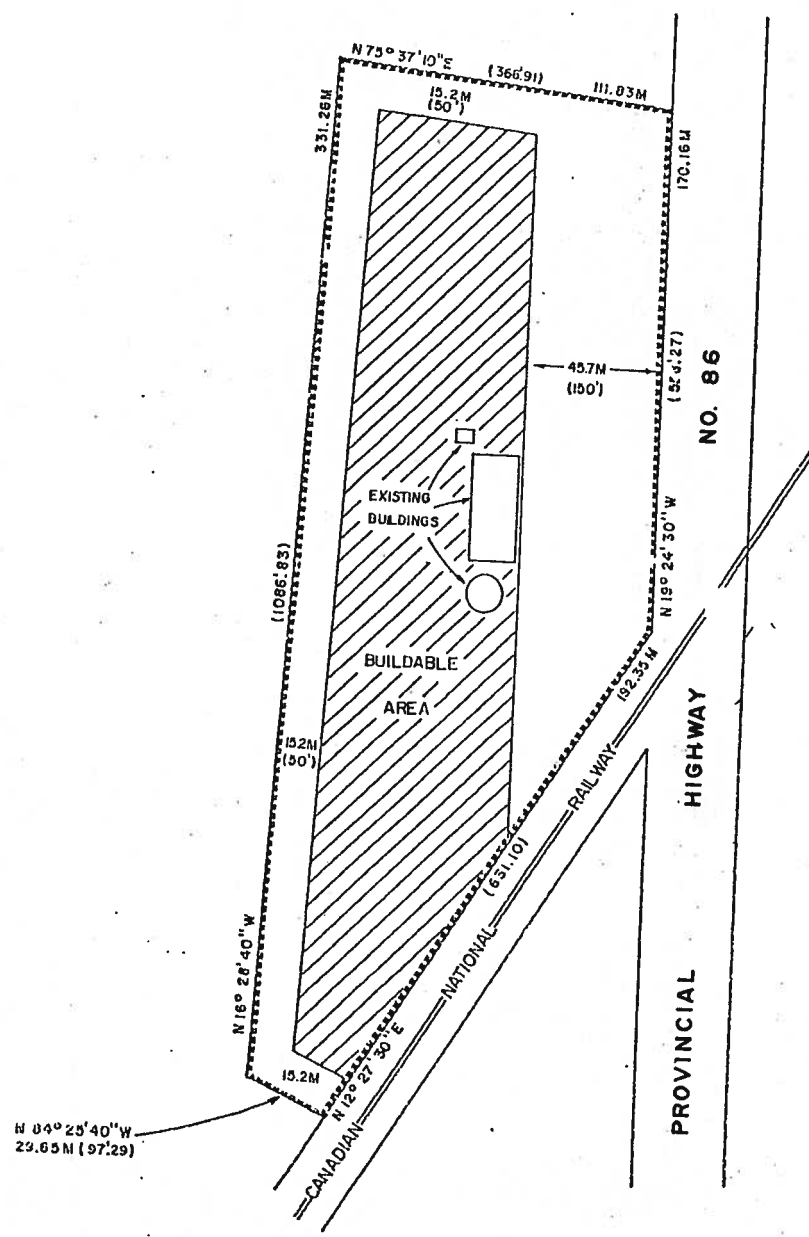
MAYOR

CLERK

PART OF LOT 46 G.C.T. TOWNSHIP OF WOOLWICH



NOTE: APPROXIMATE IMPERIAL EQUIVALENTS SHOWN IN BRACKETS.



SUBJECT LANDS OUTLINED THIS _____

THIS IS SCHEDULE A TO BY-LAW _____
PASSED THIS _____ DAY OF _____, 198 .

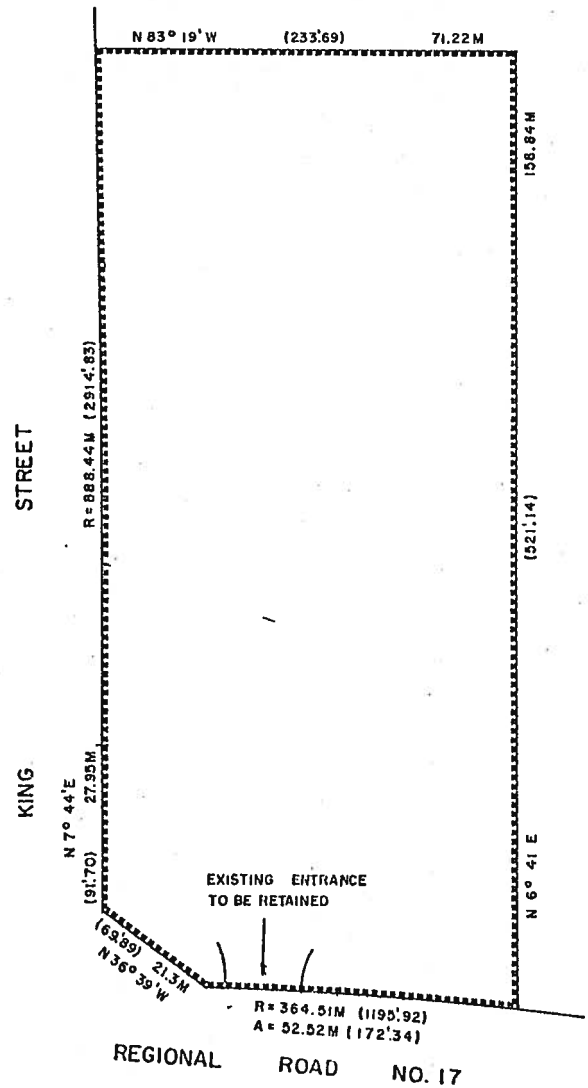
MAYOR _____

CLERK _____

PART OF LOT 36 G.C.T.
 TOWNSHIP OF WOOLWICH
 (FORMER VILLAGE OF ST. JACOBS)



NOTE: APPROXIMATE IMPERIAL EQUIVALENTS SHOWN IN BRACKETS.
 SUBJECT LANDS OUTLINED THUS



THIS IS SCHEDULE A TO BY-LAW _____,
 PASSED THIS _____ DAY OF _____, 198 .

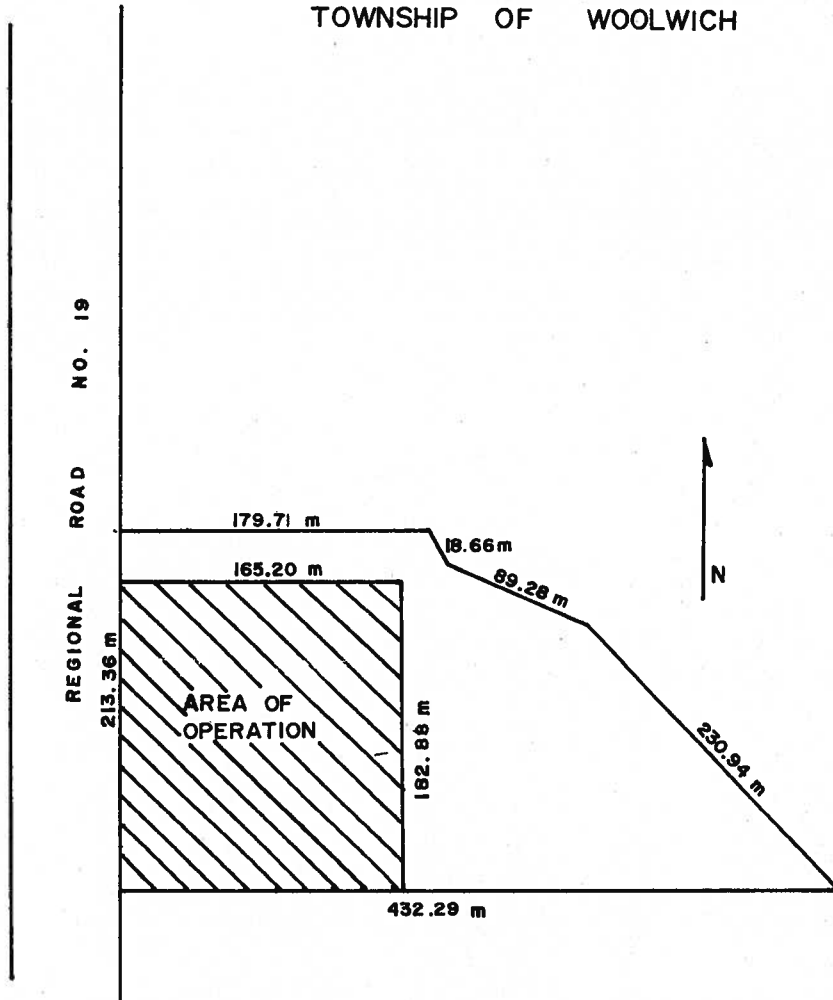
 MAYOR

 CLERK

SEE PART 10 - SCHEDULE 'B'

SECTION 26 . I . 11

PART LOT 101 G.C.T.
TOWNSHIP OF WOOLWICH

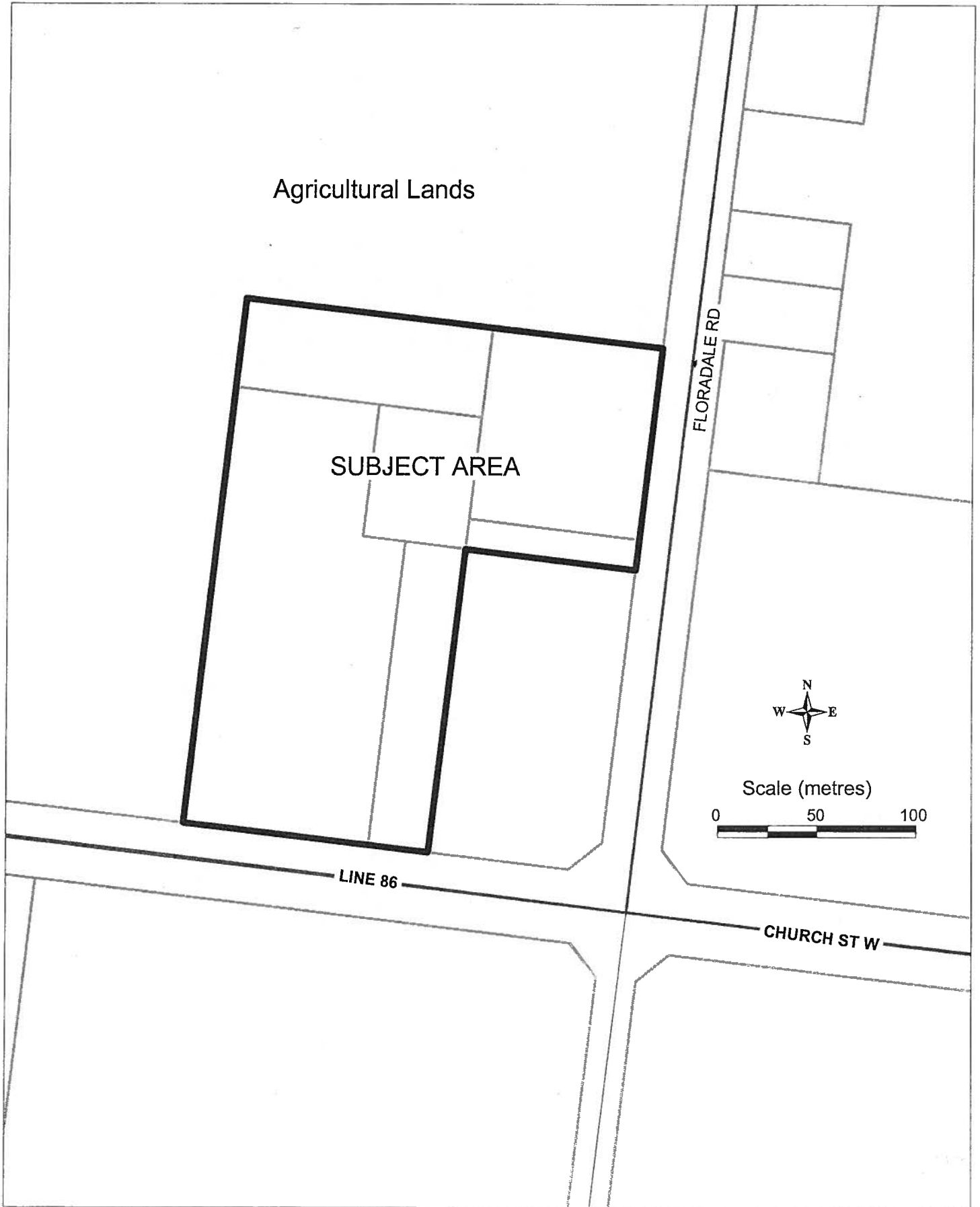


This is Schedule _____ to By-law _____
passed this _____ day of _____, 198

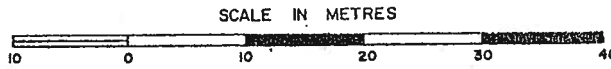
MAYOR

CLERK

SCALE : 0 50 100 200 M

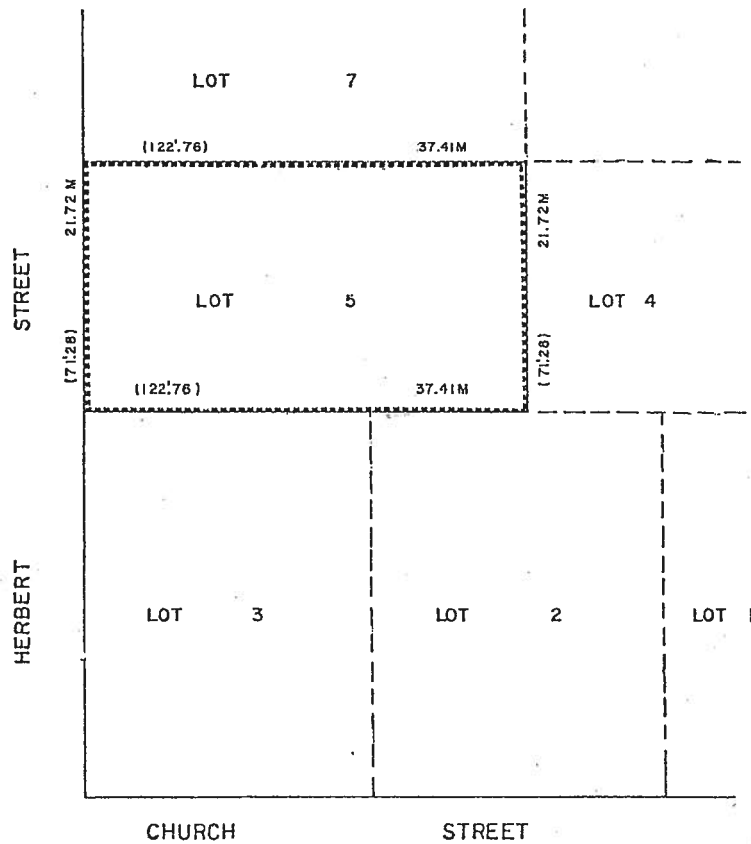


LOT 5, REG. PLAN 99
 TOWNSHIP OF WOOLWICH
 (FORMER TOWN OF ELMIRA)



NOTE: APPROXIMATE IMPERIAL EQUIVALENTS SHOWN IN BRACKETS

SUBJECT LANDS OUTLINED THUS

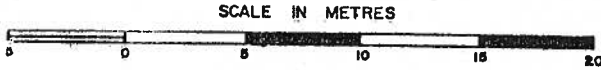


THIS IS SCHEDULE A TO BY-LAW _____,
 PASSED THIS ____ DAY OF _____, 1984

 MAYOR

 CLERK

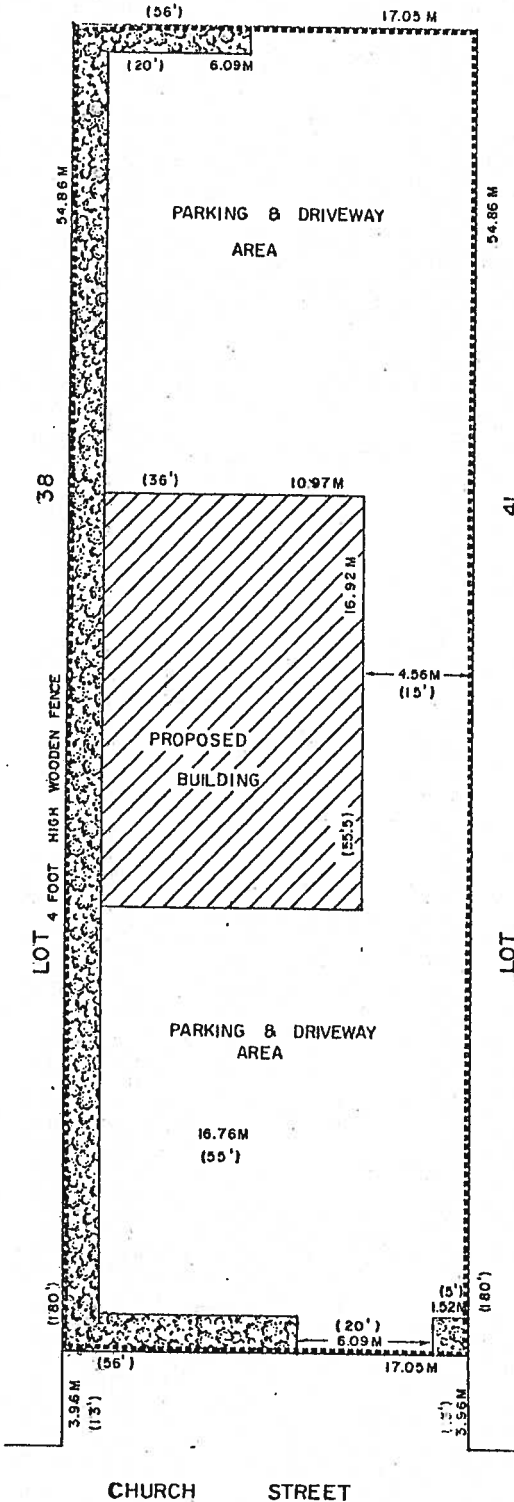
LOT 39, REG. PLAN 571
 TOWNSHIP OF WOOLWICH
 (FORMER TOWN OF ELMIRA)



NOTE: APPROXIMATE IMPERIAL EQUIVALENTS
 SHOWN IN BRACKETS.

SUBJECT LANDS OUTLINED THUS -----

LANDSCAPED AREA SHOWN THUS 



THIS IS SCHEDULE A TO BY-LAW _____,
 PASSED THIS _____ DAY OF _____, 198 .

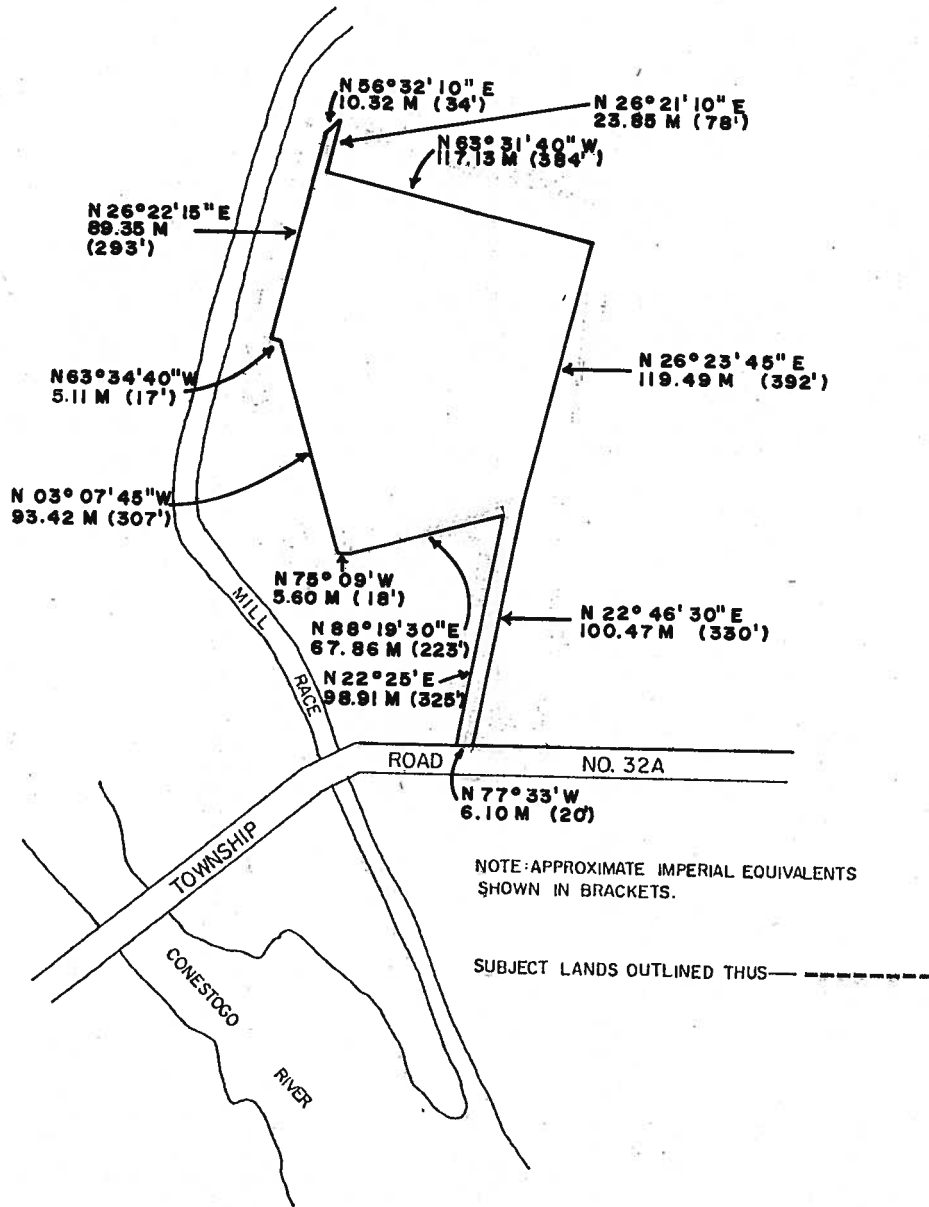
 MAYOR

 CLERK

SEE PART 2 - SCHEDULE 'B'

SECTION 26.1.15

PART OF LOT 10 G.C.T.
TOWNSHIP OF WOOLWICH

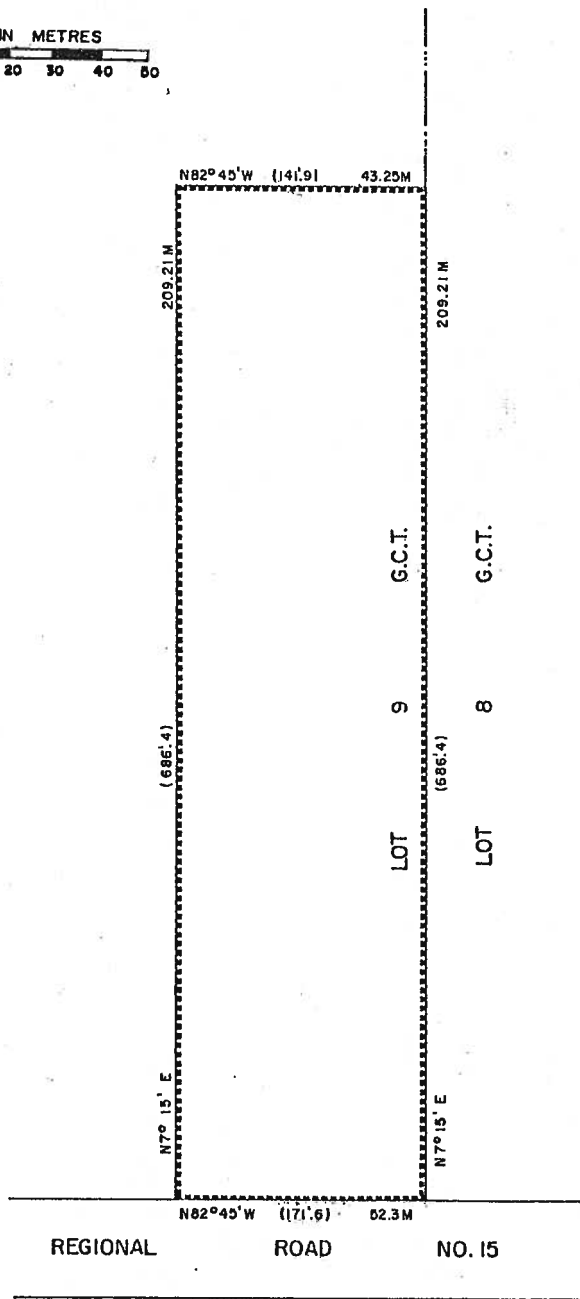
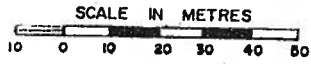


THIS IS SCHEDULE A TO BY-LAW _____,
PASSED THIS _____ DAY OF _____, 198 .

MAYOR

CLERK

PART OF LOT 9 G.C.T.
TOWNSHIP OF WOOLWICH



NOTE: APPROXIMATE IMPERIAL EQUIVALENTS SHOWN IN BRACKETS.
SUBJECT LANDS OUTLINED THUS —————

THIS IS SCHEDULE A TO BY-LAW _____,
PASSED THIS _____ DAY OF _____, 198 .

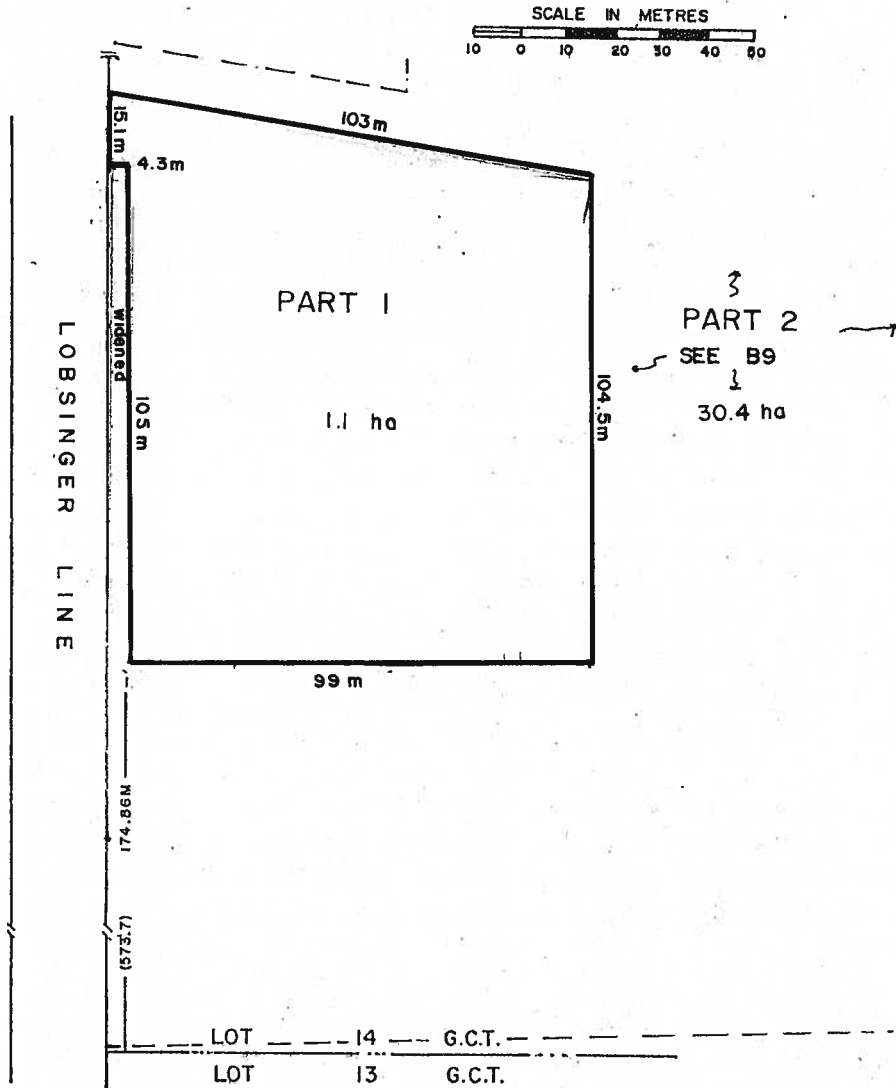
MAYOR

CLERK

PART OF LOT 14 G.C.T.
TOWNSHIP OF WOOLWICH



NOTE: APPROXIMATE IMPERIAL EQUIVALENTS SHOWN IN BRACKETS.
SUBJECT LANDS OUTLINED THUS _____

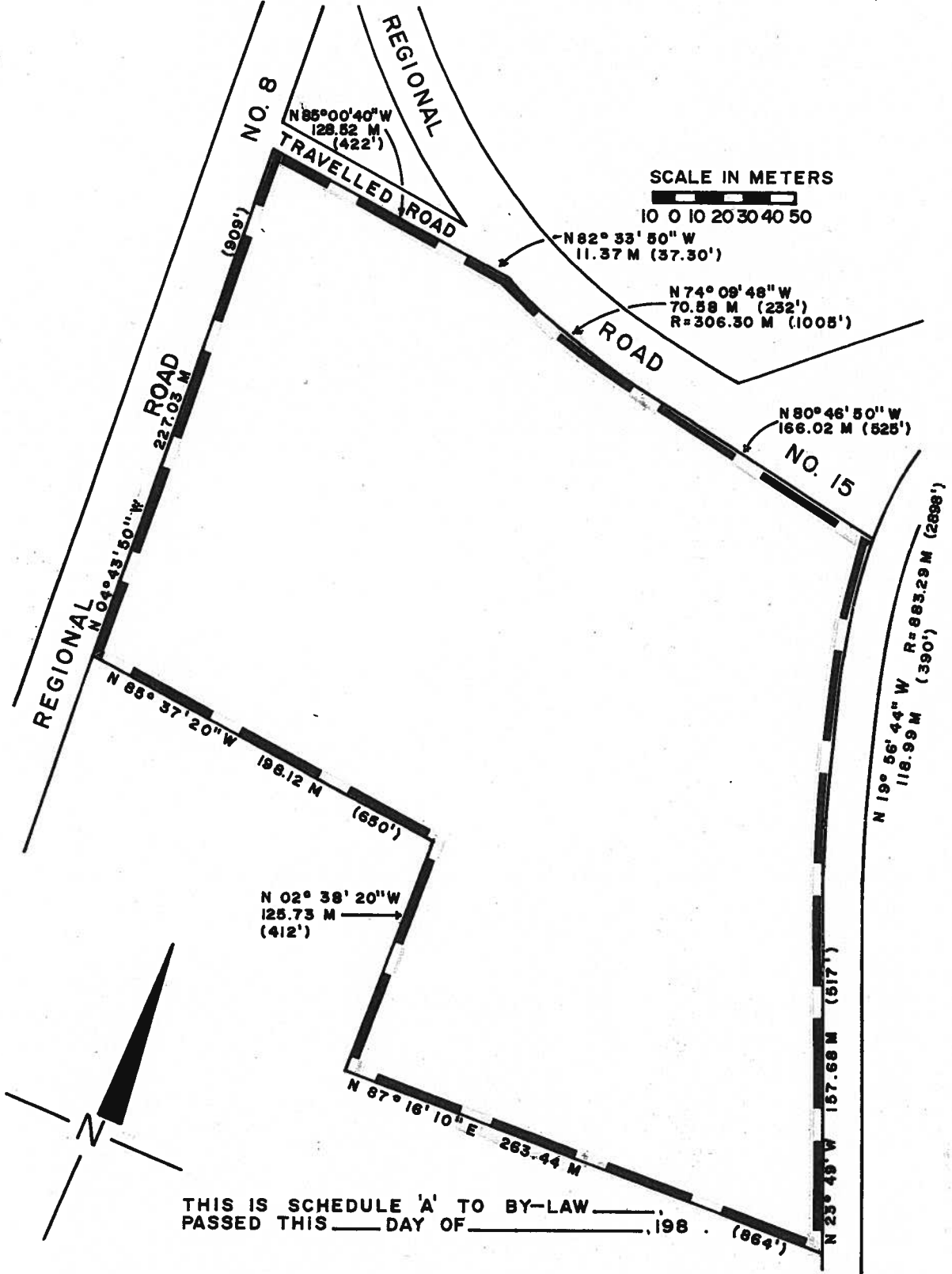


THIS IS SCHEDULE A TO BY-LAW _____,
PASSED THIS _____ DAY OF _____, 198 .

MAYOR

CLERK

PART OF LOT 18 G.C.T.
TOWNSHIP OF WOOLWICH

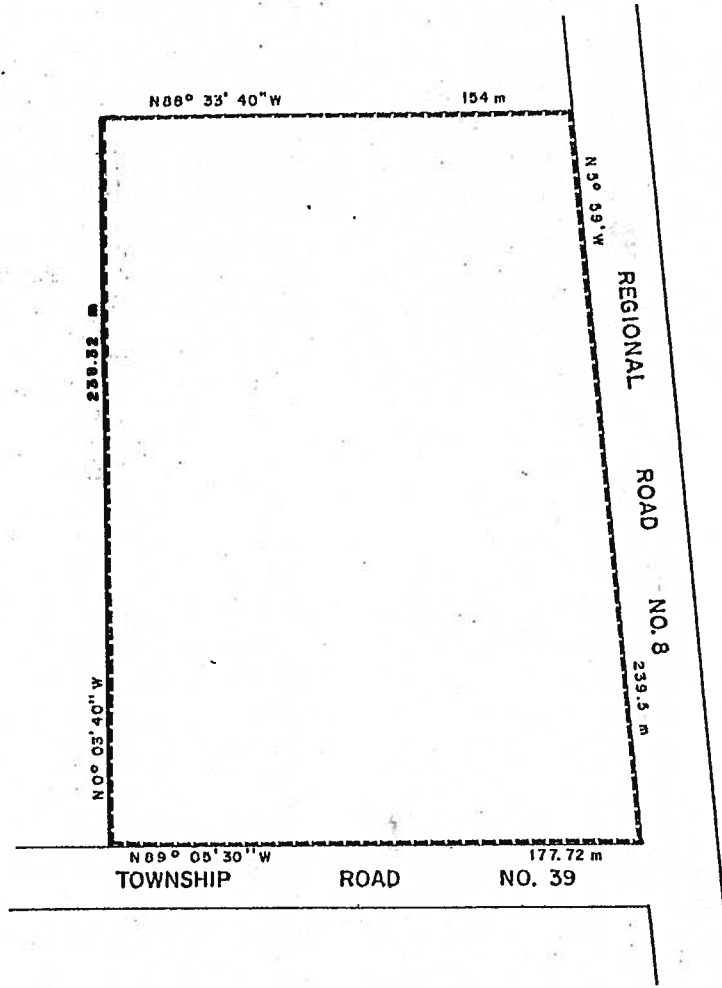
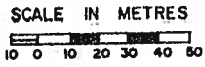


MAYOR

CLERK

PART OF LOT 18 G.C.T.
TOWNSHIP OF WOOLWICH

SUBJECT LANDS OUTLINED THUS -----



THIS IS SCHEDULE 'A' TO BY-LAW _____,
PASSED THIS _____ DAY OF _____, 198 .

MAYOR

CLERK

Map 26.1.21 Deleted

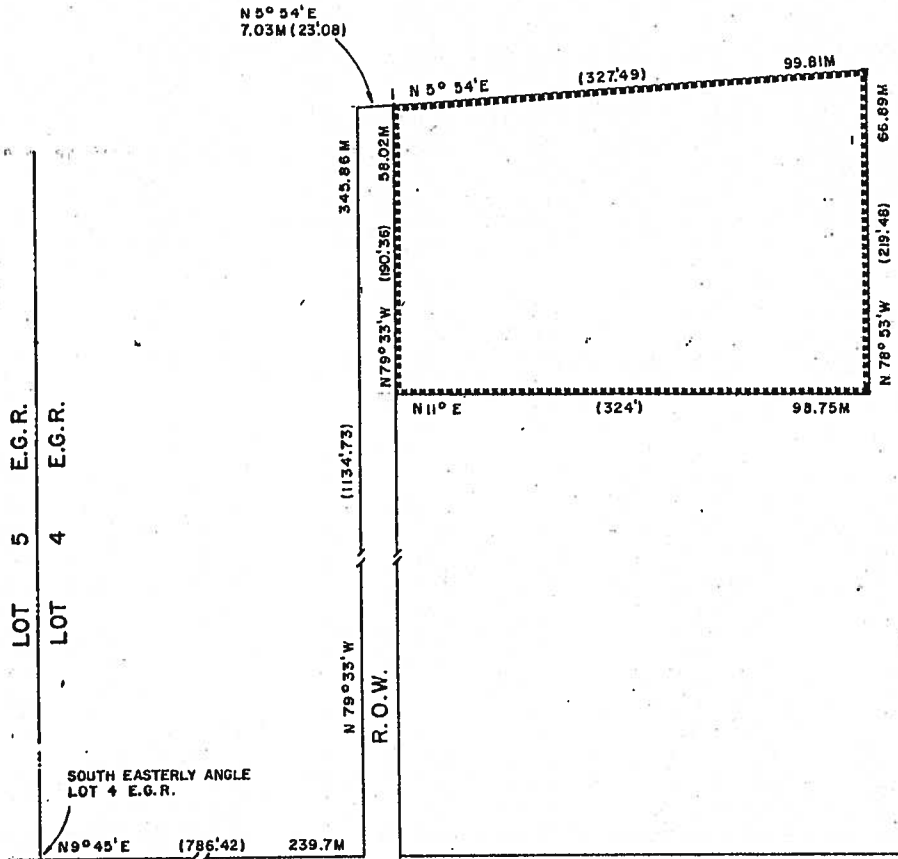
MAP 26.1.22 Deleted

PART OF BROKEN LOT 4 E.G.R.
 TOWNSHIP OF WOOLWICH
 (WINTERBOURNE)



NOTE: APPROXIMATE IMPERIAL EQUIVALENTS SHOWN IN BRACKETS.

SUBJECT LANDS OUTLINED THUS -----

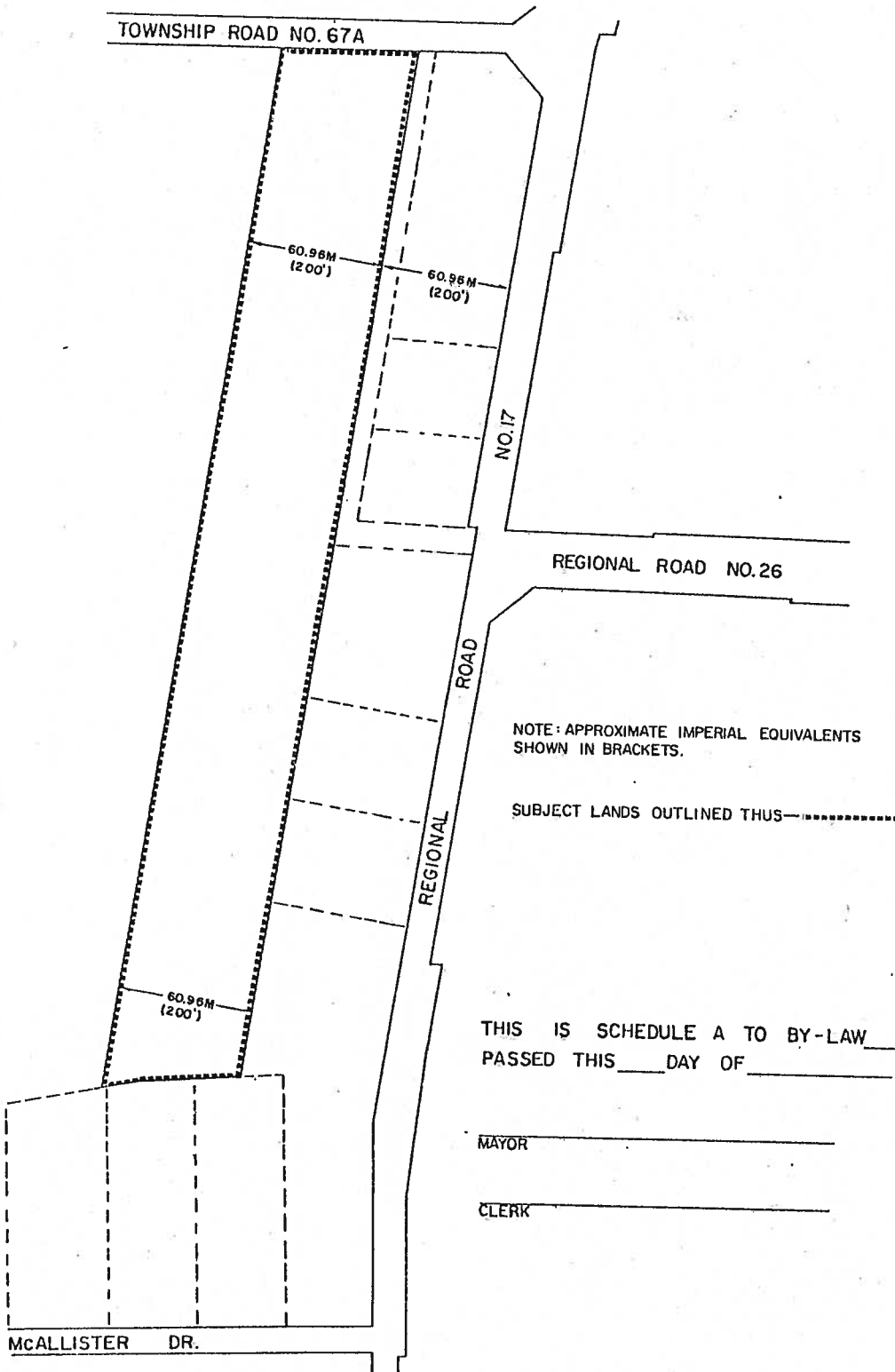
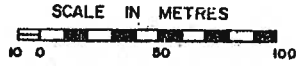


THIS IS SCHEDULE A TO BY-LAW _____,
 PASSED THIS ___ DAY OF _____, 198__

 MAYOR

 CLERK

PART OF LOT 6 J.W.T.
TOWNSHIP OF WOOLWICH
(BLOOMINGDALE)

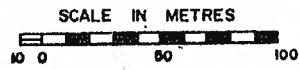


THIS IS SCHEDULE A TO BY-LAW _____,
PASSED THIS _____ DAY OF _____, 198 .

MAYOR _____

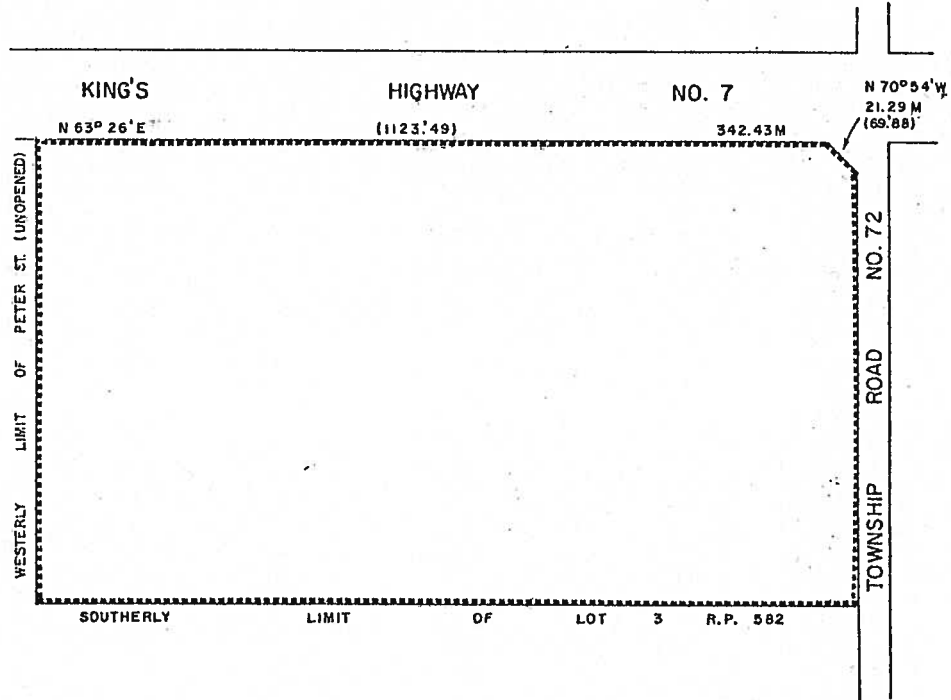
CLERK _____

PART OF LOT 84 G.C.T.
 TOWNSHIP OF WOOLWICH
 (FORMER TOWNSHIP OF WATERLOO)



NOTE: APPROXIMATE IMPERIAL EQUIVALENTS SHOWN IN BRACKETS.

SUBJECT LANDS OUTLINED THUS

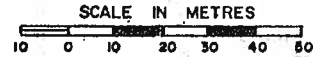


THIS IS SCHEDULE A TO BY-LAW _____,
 PASSED THIS ____ DAY OF _____, 198__.

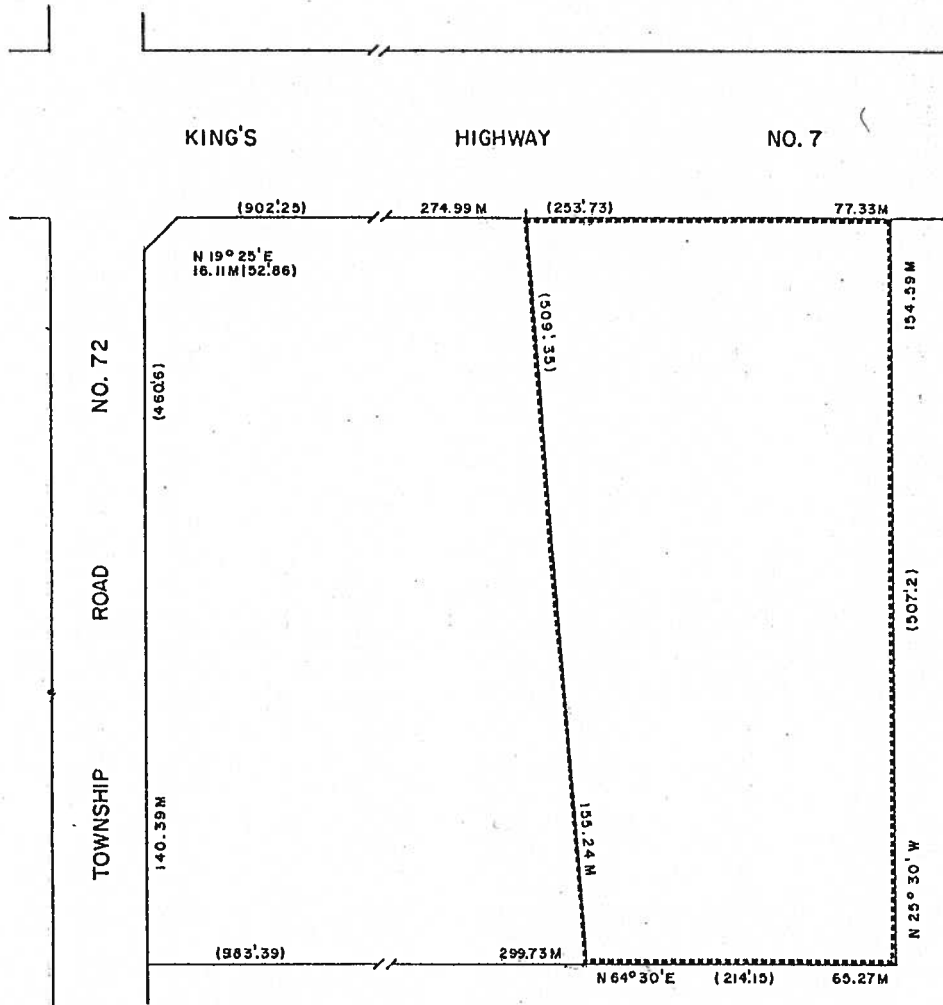
 MAYOR

 CLERK

PART OF LOT 106 G.C.T.
 TOWNSHIP OF WOOLWICH
 (FORMER TOWNSHIP OF WATERLOO)



NOTE: APPROXIMATE IMPERIAL EQUIVALENTS SHOWN IN BRACKETS.



SUBJECT LANDS OUTLINED THUS _____

THIS IS SCHEDULE A TO BY-LAW _____,
 PASSED THIS _____ DAY OF _____, 198__.

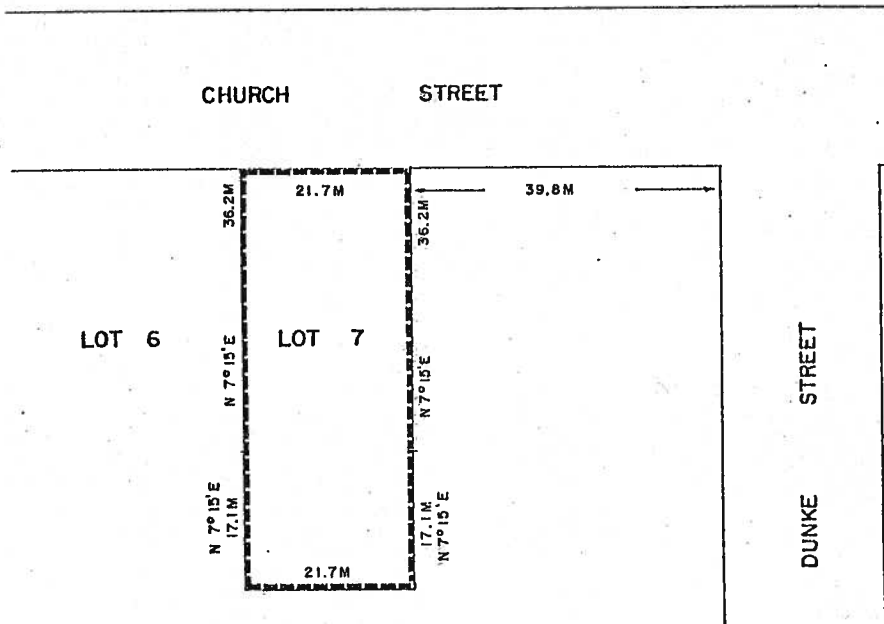
 MAYOR

 CLERK

PART OF LOT 7, REGISTERED PLAN NO. 570
(ELMIRA SETTLEMENT AREA)
TOWNSHIP OF WOOLWICH



SUBJECT LANDS OUTLINED THUS 

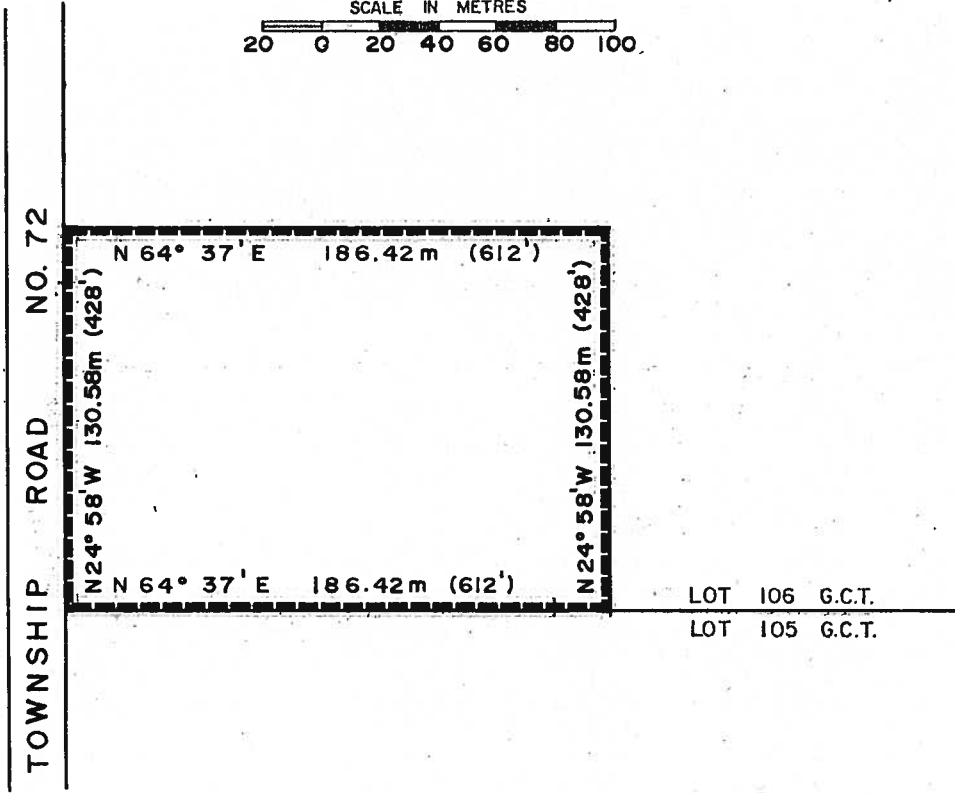
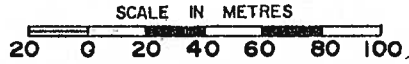


THIS IS SCHEDULE 'A' TO BY-LAW _____,
PASSED THIS _____ DAY OF _____, 198__.

MAYOR

CLERK

PART OF LOT 106 G.C.T.
 TOWNSHIP OF WOOLWICH
 (FORMER TOWNSHIP OF WATERLOO)



NOTE: APPROXIMATE IMPERIAL EQUIVALENTS SHOWN IN BRACKETS.

SUBJECT LANDS OUTLINED THUS

THIS IS SCHEDULE A TO BY-LAW _____,
 PASSED THIS _____ DAY OF _____, 198..

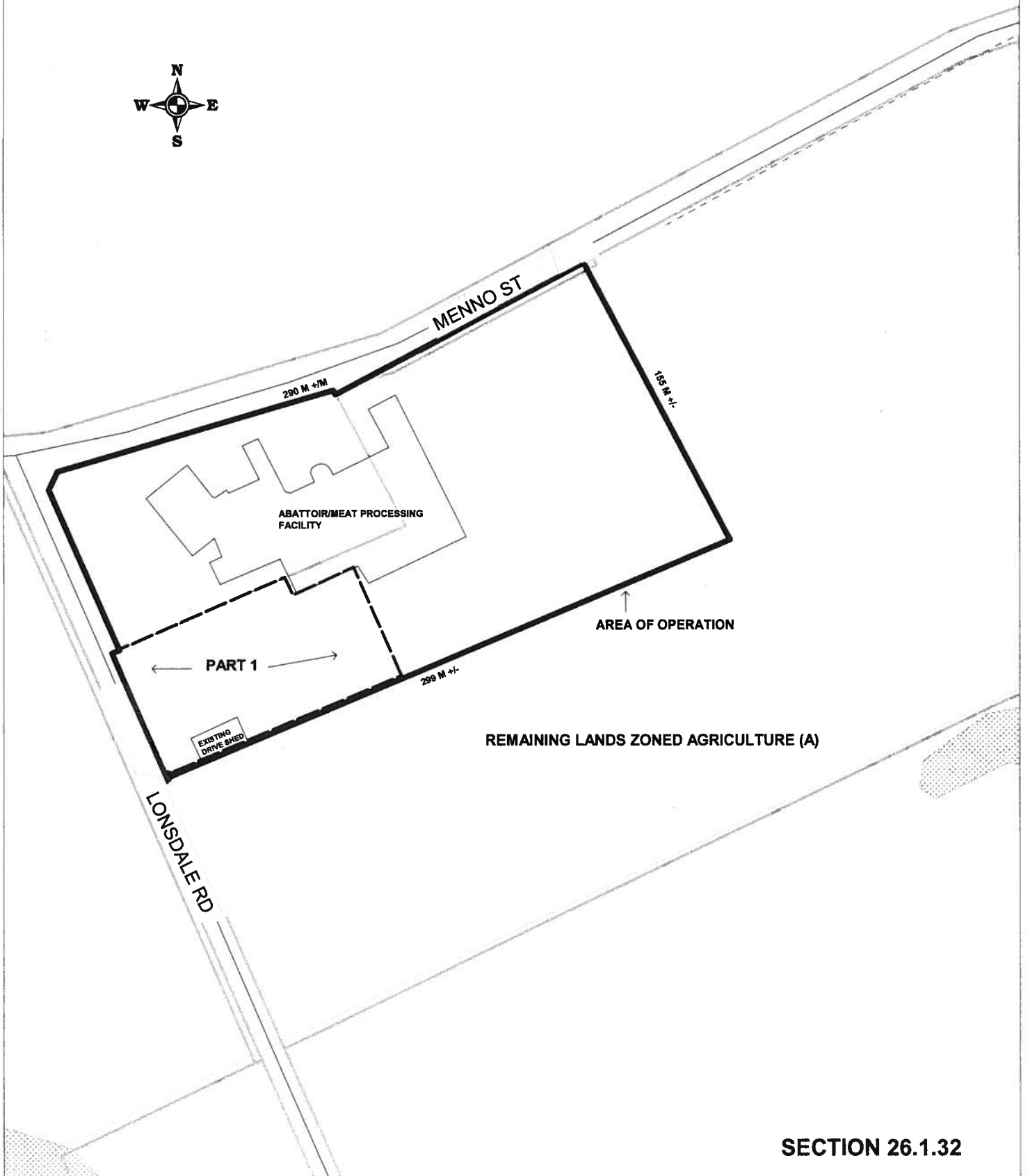
 MAYOR

 CLERK

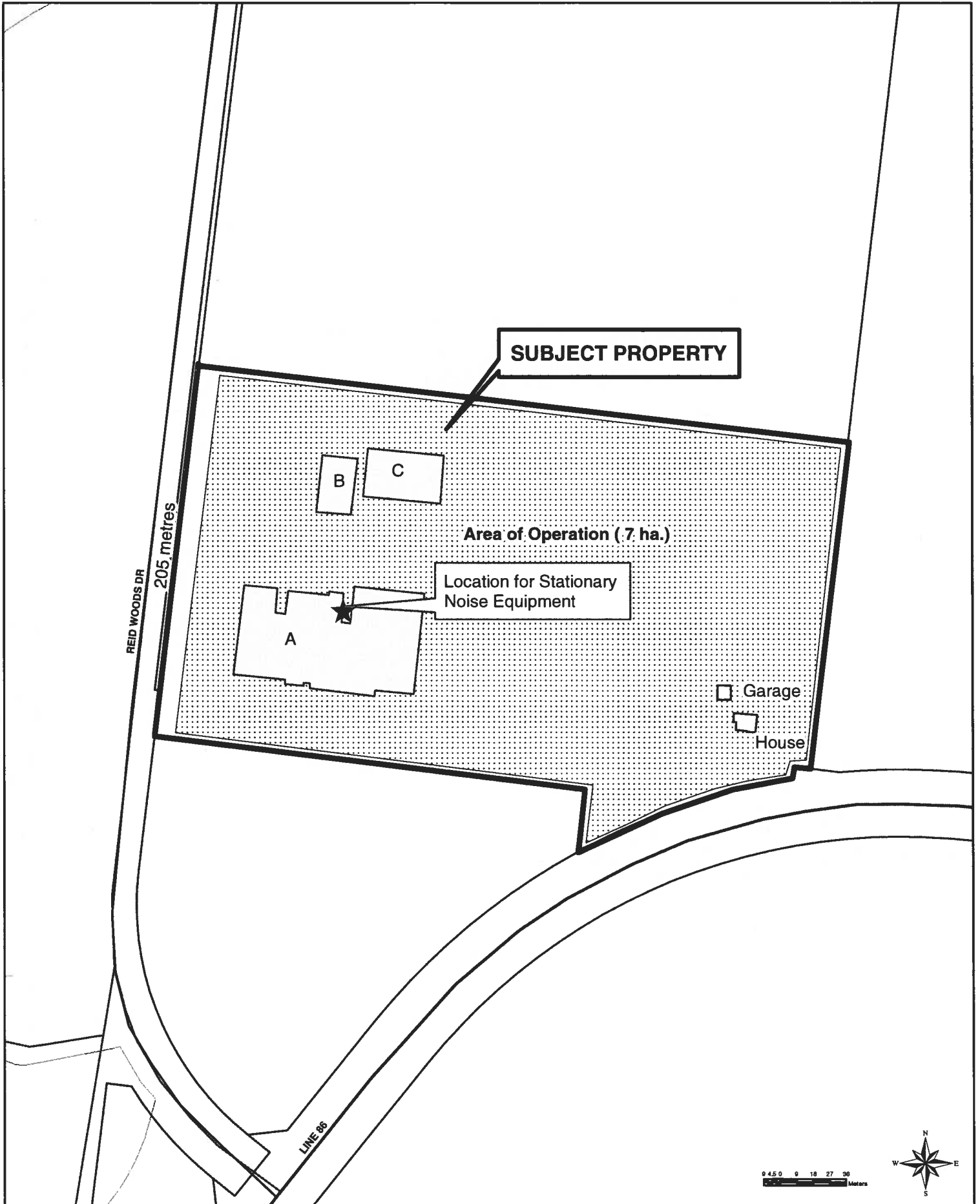
Map 26.1.29 Deleted

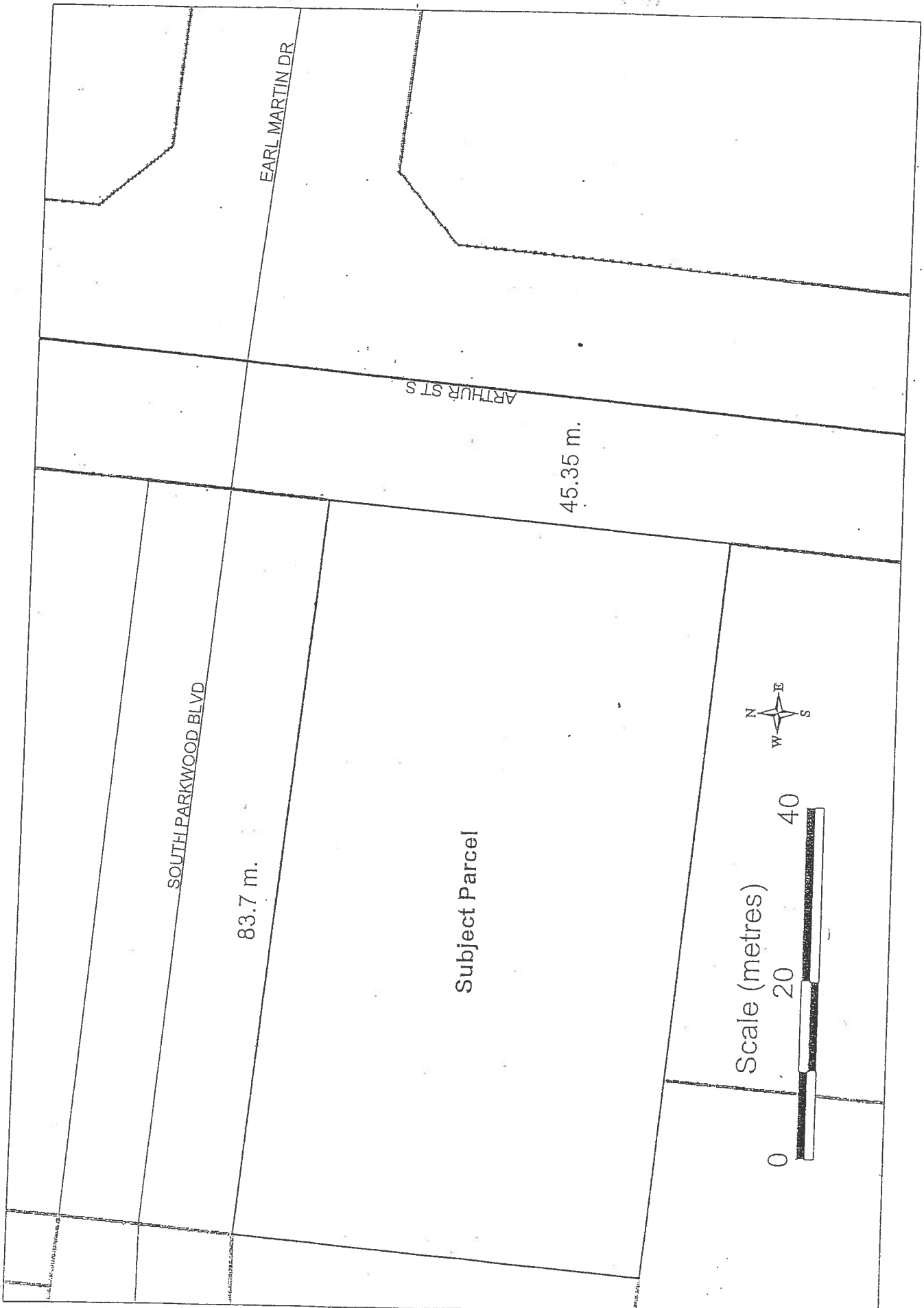
Map 26.1.31 Deleted

PART LOT 109 GCT 313 MENNO ST.

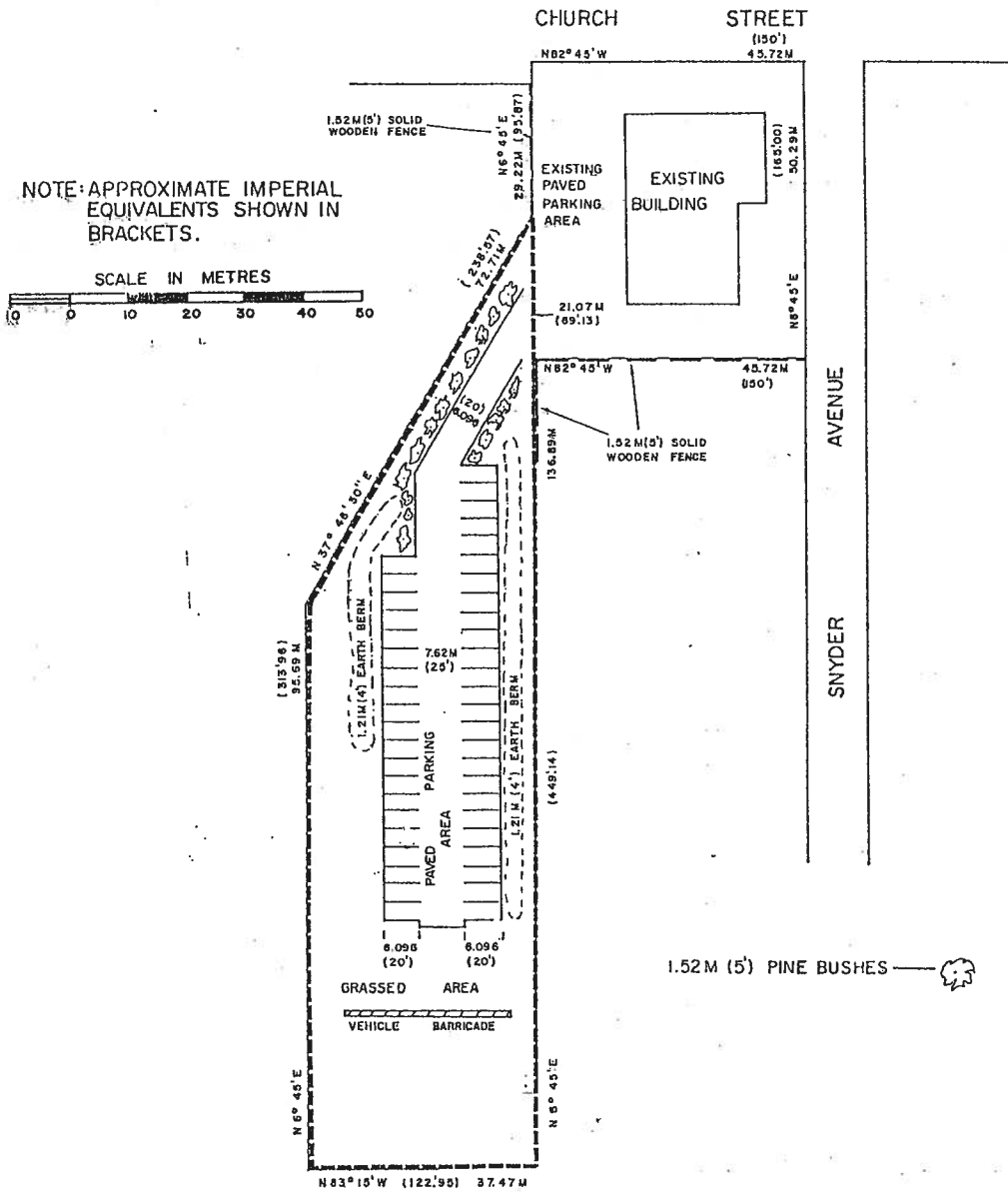


Part Lot 112 and 113 G.C.T.
Township of Woolwich





LOT 9, & PART OF LOT 10, REG. PLAN NO. 1364
 TOWNSHIP OF WOOLWICH
 (FORMERLY TOWN OF ELMIRA)



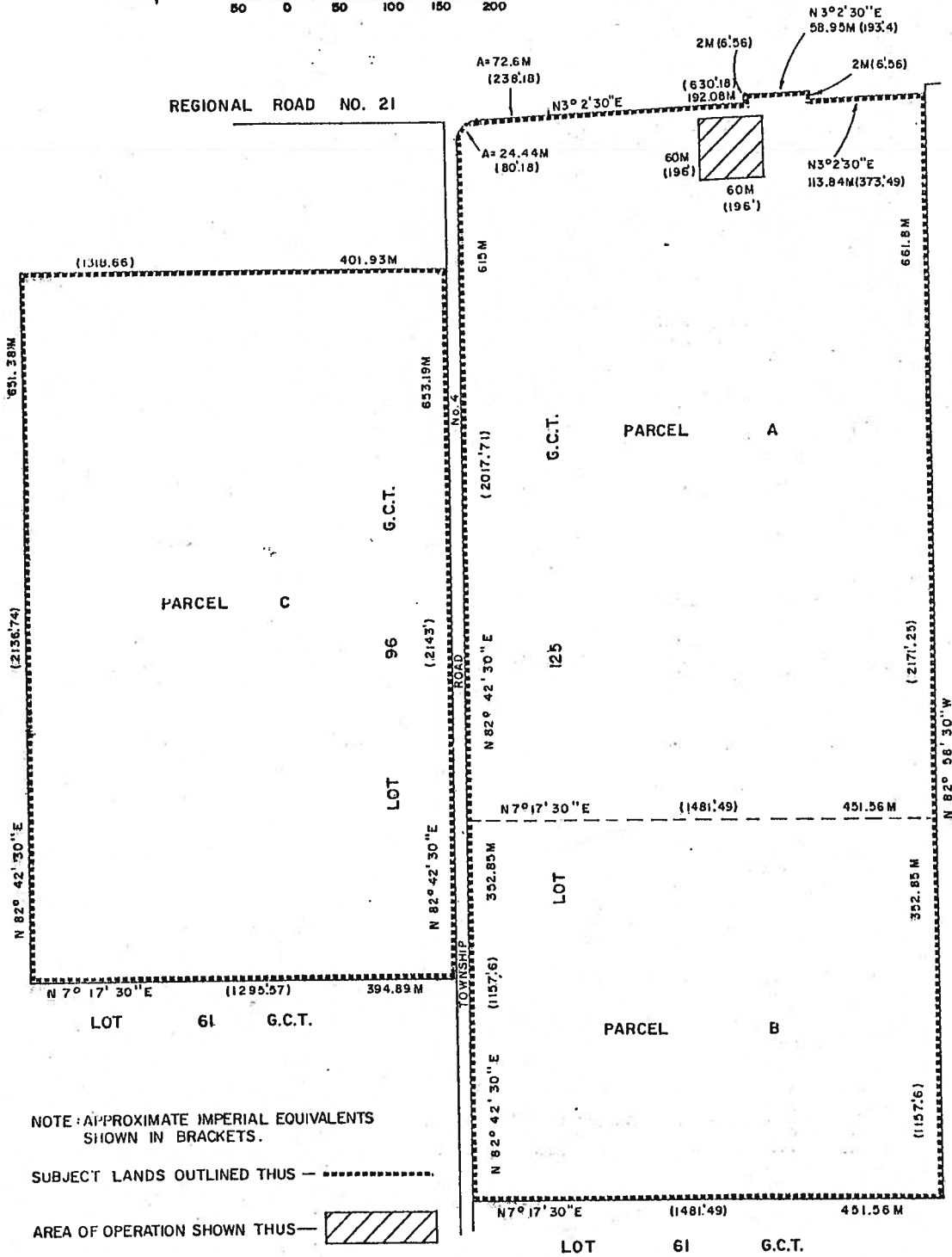
SUBJECT LANDS OUTLINED THUS ————

THIS IS SCHEDULE 'A' TO BY-LAW _____,
 PASSED THIS _____ DAY OF _____, 198.

 MAYOR

 CLERK

PART OF LOTS 125 G.C.T & 96.G.C.T. TOWNSHIP OF WOOLWICH



NOTE: APPROXIMATE IMPERIAL EQUIVALENTS
SHOWN IN BRACKETS.

SUBJECT LANDS OUTLINED THUS — — — — —

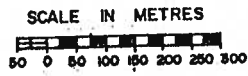
AREA OF OPERATION SHOWN THUS — —

THIS IS SCHEDULE A TO BY-LAW _____,
PASSED THIS _____ DAY OF _____, 198__.

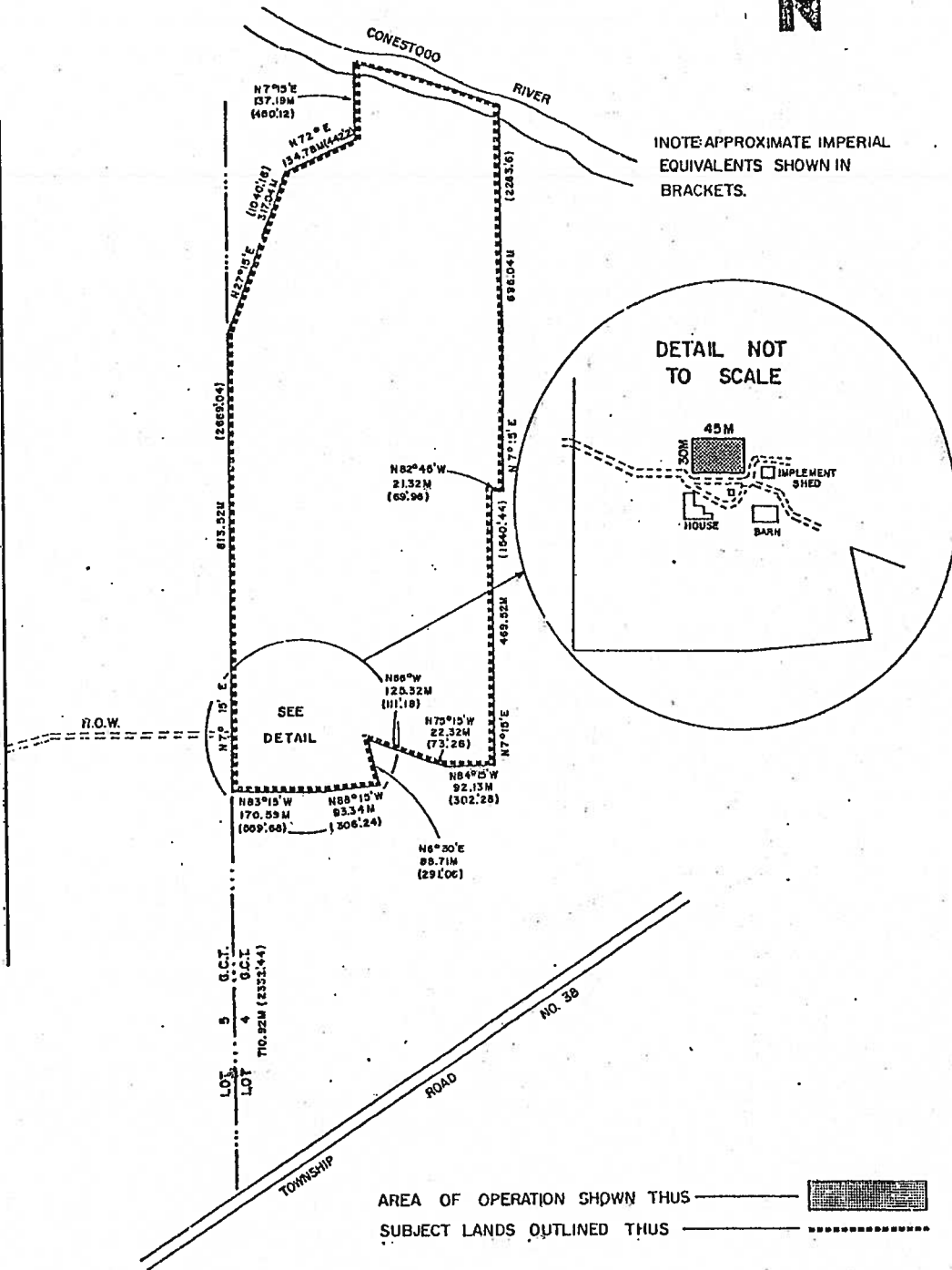
MAYOR

CLERK

PART OF LOTS 4 & 5 G.C.T.
TOWNSHIP OF WOOLWICH



TOWNSHIP ROAD NO. 43



NOTE: APPROXIMATE IMPERIAL EQUIVALENTS SHOWN IN BRACKETS.

DETAIL NOT TO SCALE

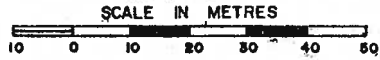
AREA OF OPERATION SHOWN THUS SUBJECT LANDS OUTLINED THUS


THIS IS SCHEDULE A TO BY-LAW _____,
PASSED THIS _____ DAY OF _____, 198 .

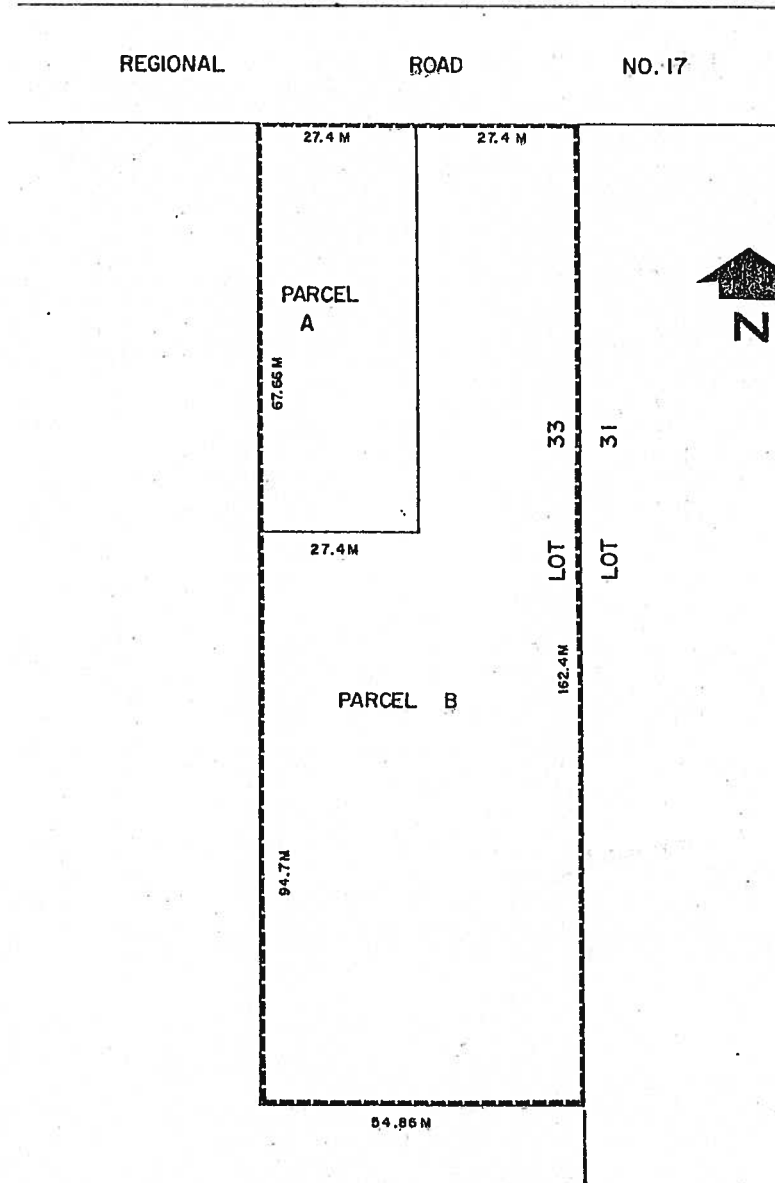
MAYOR

CLERK

PART OF LOT 33 G.C.T.
TOWNSHIP OF WOOLWICH



SUBJECT LANDS OUTLINED THUS 



THIS IS SCHEDULE 'A' TO BY-LAW _____,
PASSED THIS _____ DAY OF _____, 198 .

MAYOR


CLERK

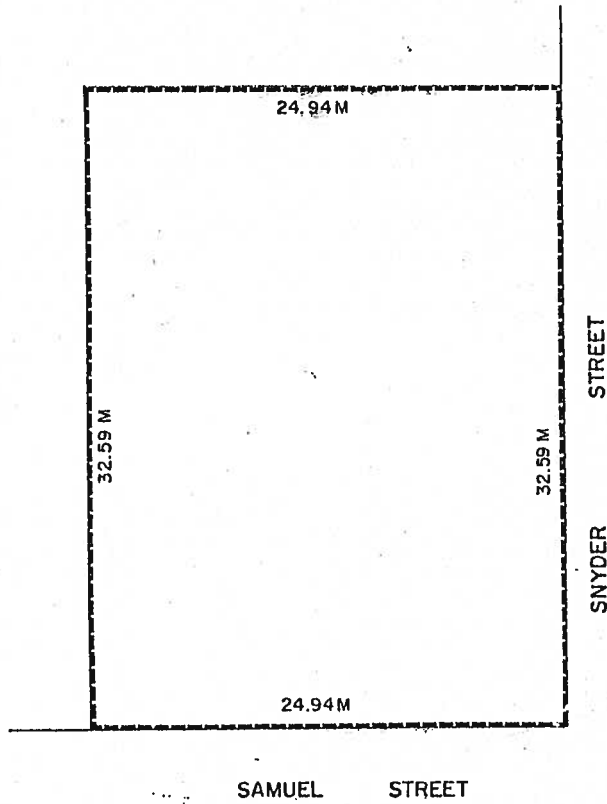
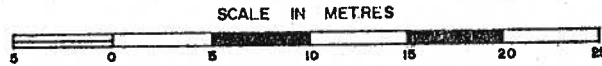
SEE PART 28-SCHEDULE 'B'

SECTION 26.1.38

LOT 13, REG'D PLAN NO. 99
TOWNSHIP OF WOOLWICH
(FORMER TOWN OF ELMIRA)



SUBJECT LANDS OUTLINED THUS 

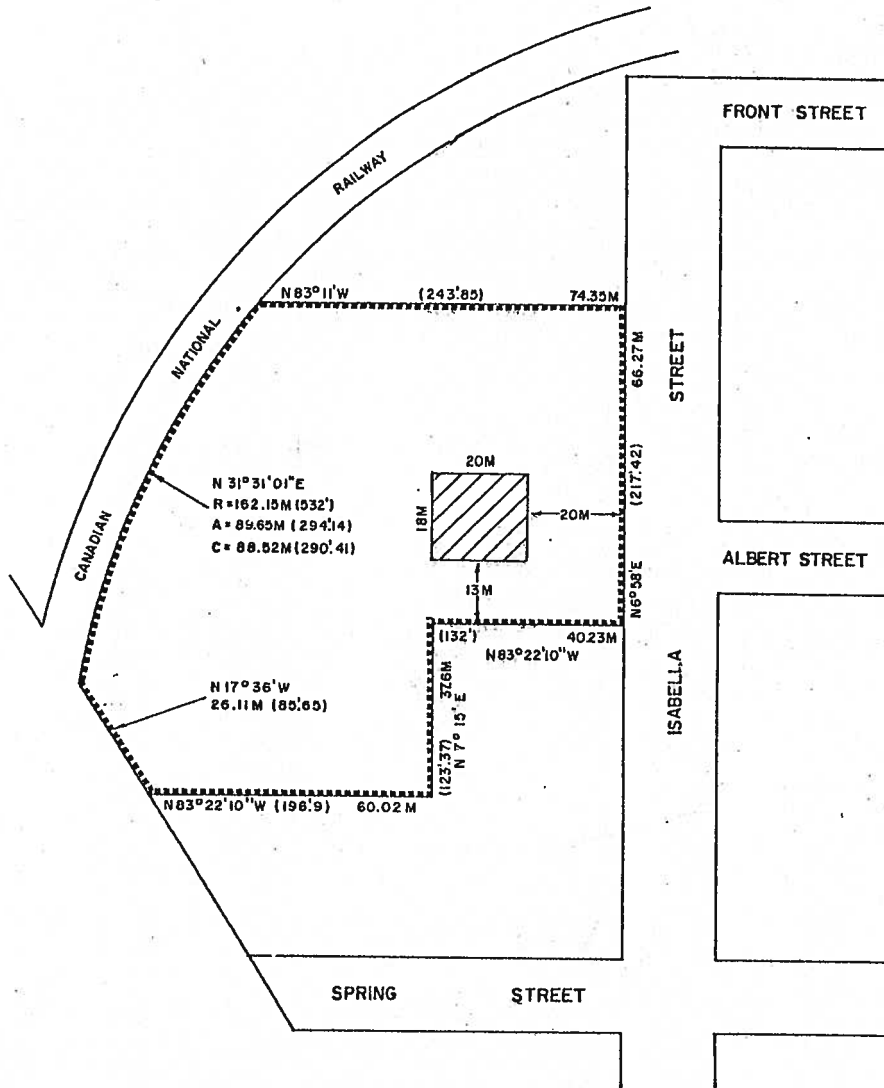
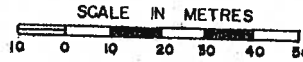


THIS IS SCHEDULE A TO BY-LAW _____,
PASSED THIS _____ DAY OF _____, 198 .

MAYOR

CLERK

PART OF LOT 8
TOWNSHIP OF WOOLWICH
(ST. JACOBS)



NOTE: APPROXIMATE IMPERIAL EQUIVALENTS SHOWN IN BRACKETS.

SUBJECT LANDS OUTLINED THUS

BUILDABLE AREA SHOWN THUS

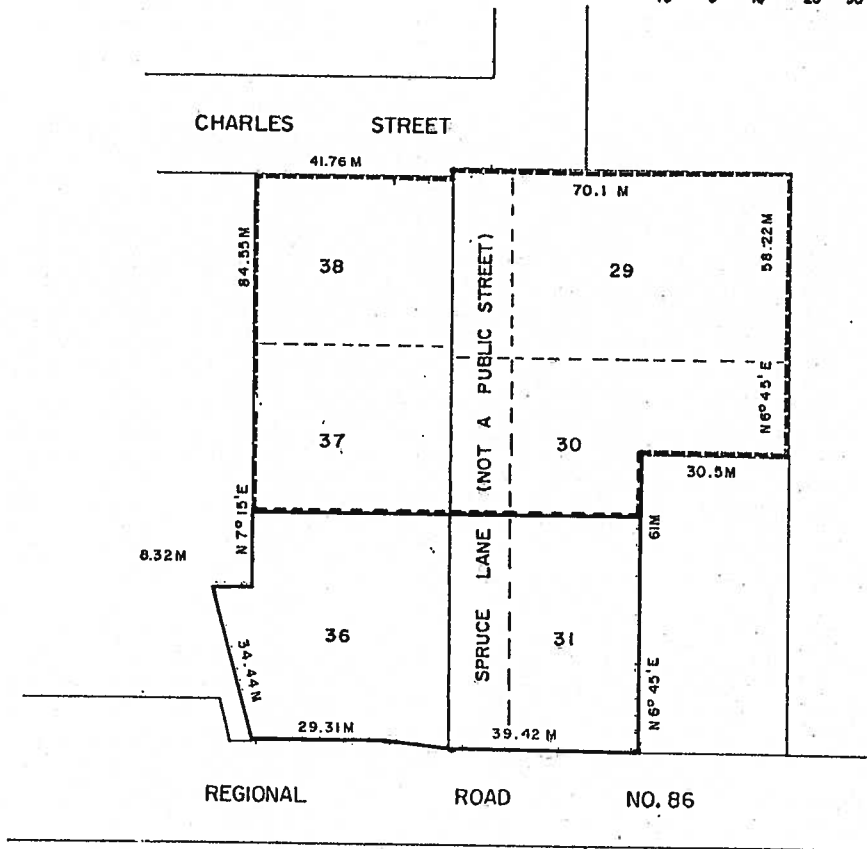
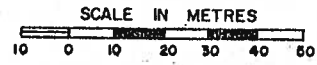
THIS IS SCHEDULE A TO BY-LAW _____,
PASSED THIS _____ DAY OF _____, 198 .


MAYOR

CLERK

LOTS 29,30,31,36,37 & 38
PLAN 1301

TOWNSHIP OF WOOLWICH
(ELMIRA)



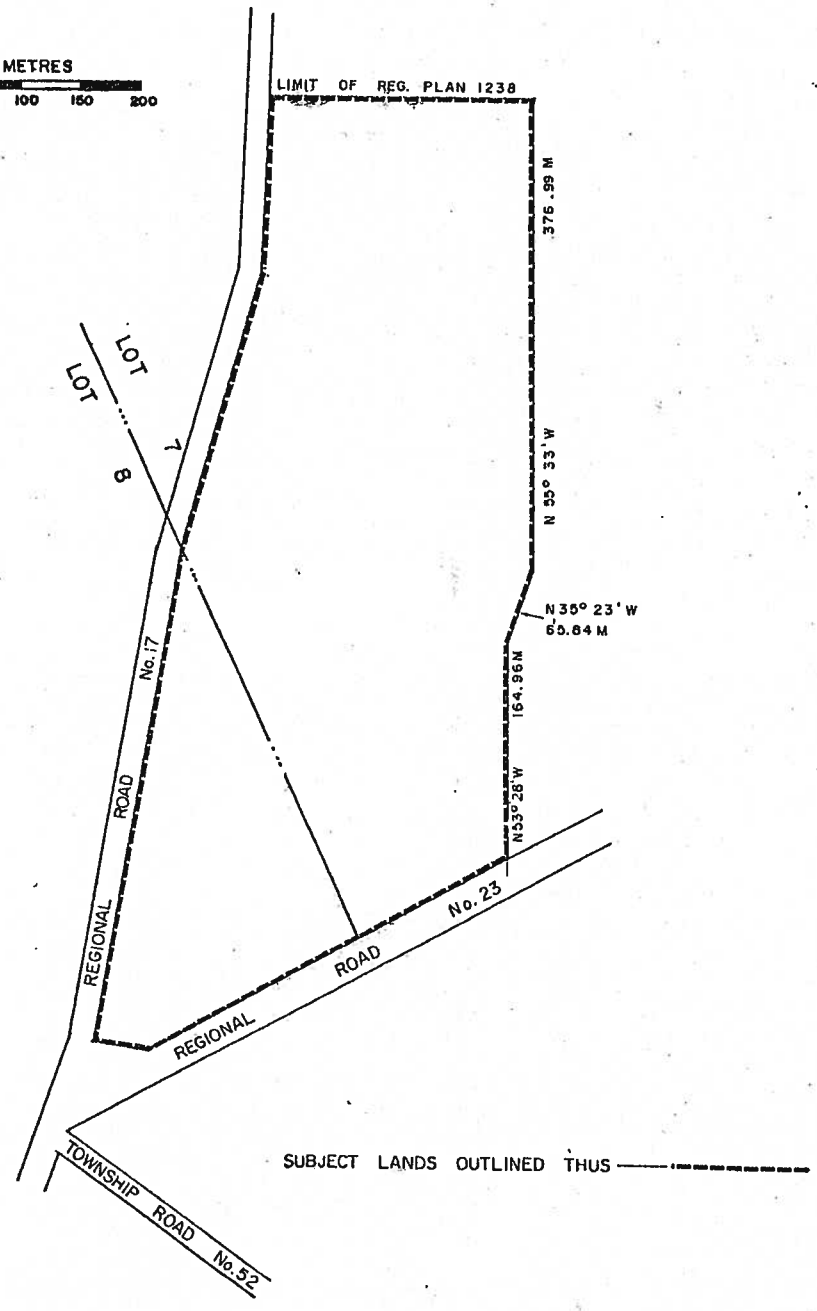
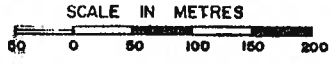
SUBJECT LANDS OUTLINED THUS 

THIS IS SCHEDULE A TO BY-LAW _____,
PASSED THIS _____ DAY OF _____, 198 .

MAYOR

CLERK

PART OF LOTS 7 & 8
 BROKEN FRONT CONCESSION
 CROOKS TRACT
 TOWNSHIP OF WOOLWICH



SUBJECT LANDS OUTLINED THUS ————

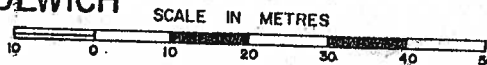
THIS IS SCHEDULE A TO BY-LAW _____,
 PASSED THIS _____ DAY OF _____, 198 .

 MAYOR

 CLERK

SEE PART 17-SCHEDULE 'B'

PART OF LOT 117 G.C.T. TOWNSHIP OF WOOLWICH

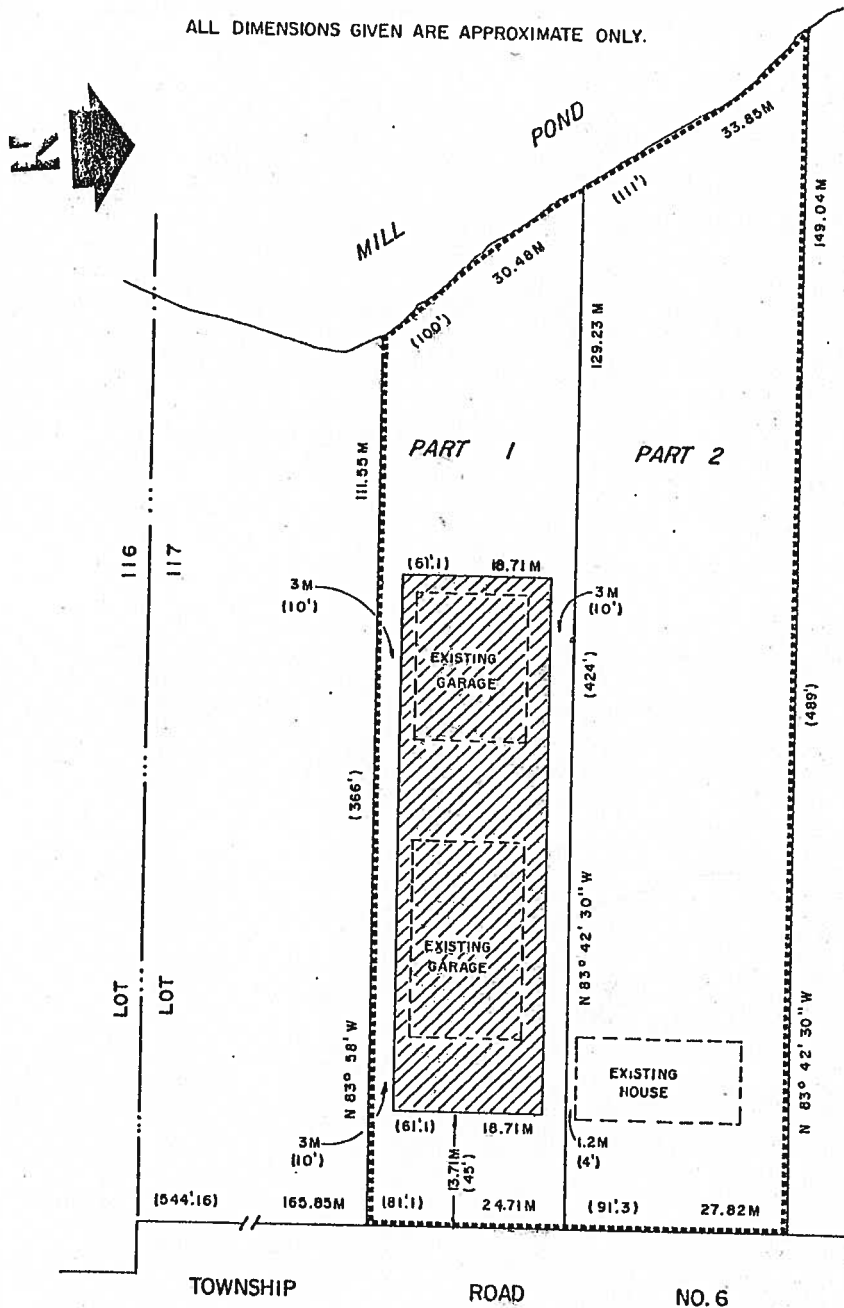


NOTE: APPROXIMATE IMPERIAL EQUIVALENTS SHOWN IN BRACKETS.

SUBJECT LANDS OUTLINED THUS

AREA OF OPERATION SHOWN THUS

ALL DIMENSIONS GIVEN ARE APPROXIMATE ONLY.



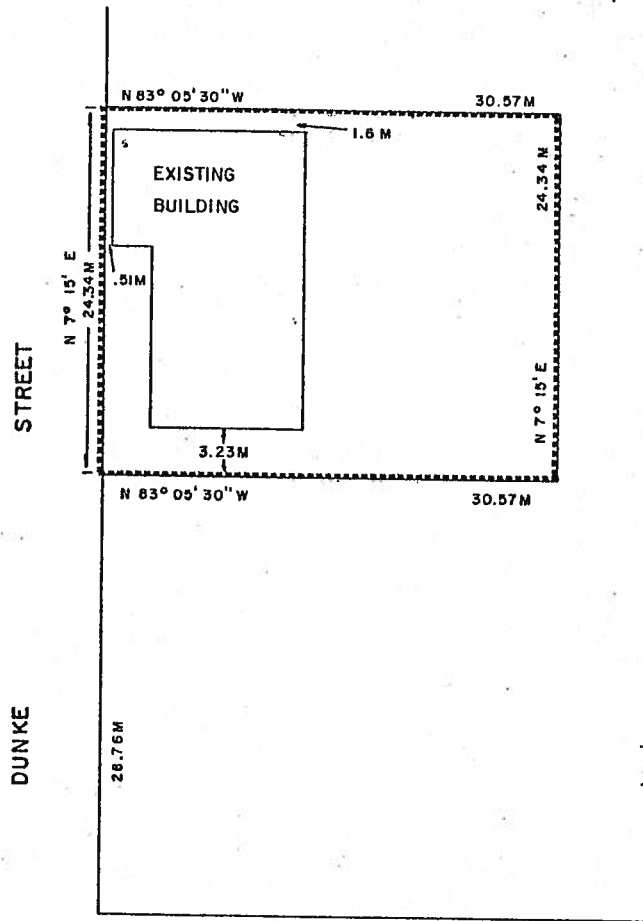
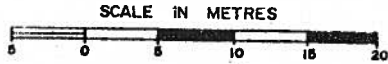
THIS IS SCHEDULE 'A' TO BY-LAW _____,
PASSED THIS _____ DAY OF _____, 198__.

MAYOR

CLERK

SEE PART I- SCHEDULE 'B'

LOT 34 & PART OF LOT 35
 REGISTERED PLAN 571
 TOWNSHIP OF WOOLWICH
 (ELMIRA)



(CHURCH STREET) REGIONAL ROAD NO. 86

SUBJECT PROPERTY OUTLINED THUS _____

THIS IS SCHEDULE 'A' TO BY-LAW _____,
 PASSED THIS _____ DAY OF _____, 198 .

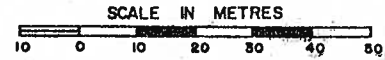
 MAYOR

 CLERK

SEE PART 2-SCHEDULE 'B'

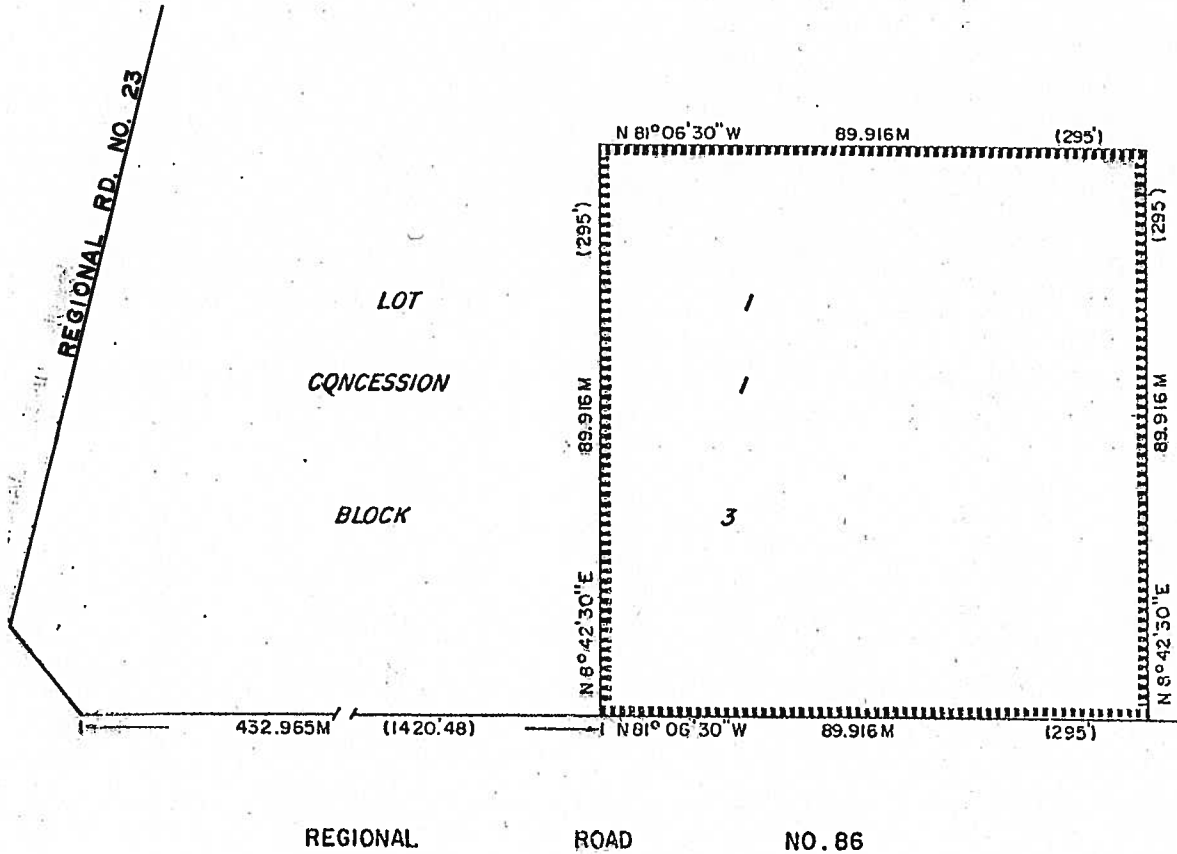


PART OF LOT 1
CONCESSION 1, BLOCK 3
HITCHING'S TRACT, E.G.R.
TOWNSHIP OF WOOLWICH



NOTE: IMPERIAL EQUIVALENTS SHOWN IN BRACKETS.

SUBJECT LANDS OUTLINED THUS



THIS IS SCHEDULE 'A' TO BY-LAW _____,
PASSED THIS _____ DAY OF _____, 198...

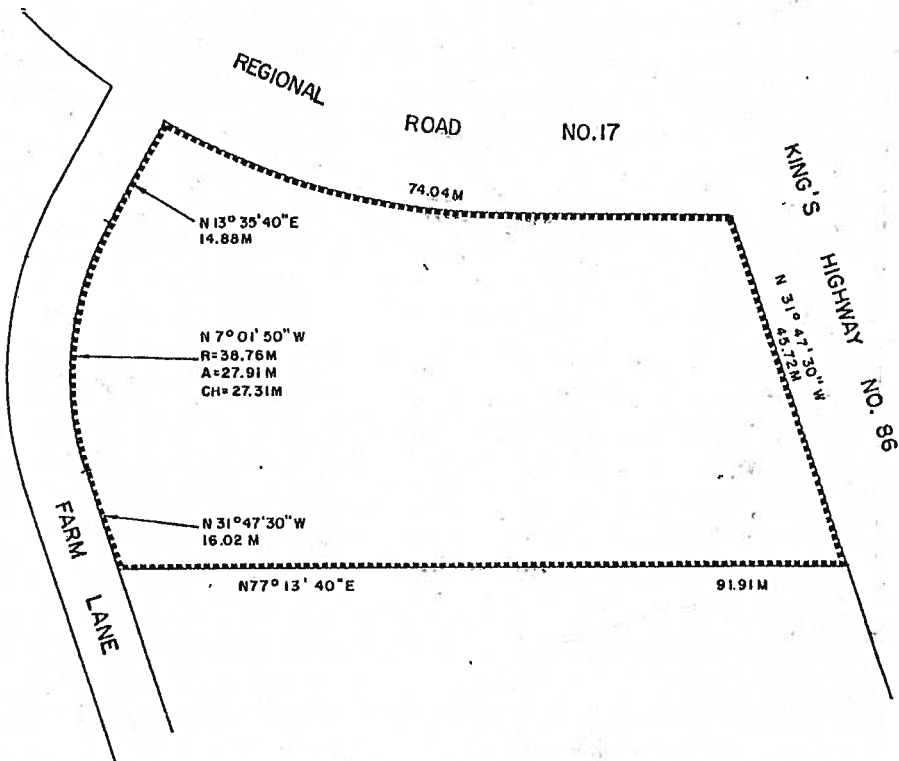
MAYOR

CLERK

PART OF LOT 36 G.C.T.
 TOWNSHIP OF WOOLWICH
 (ST. JACOBS)



SUBJECT LANDS OUTLINED THUS



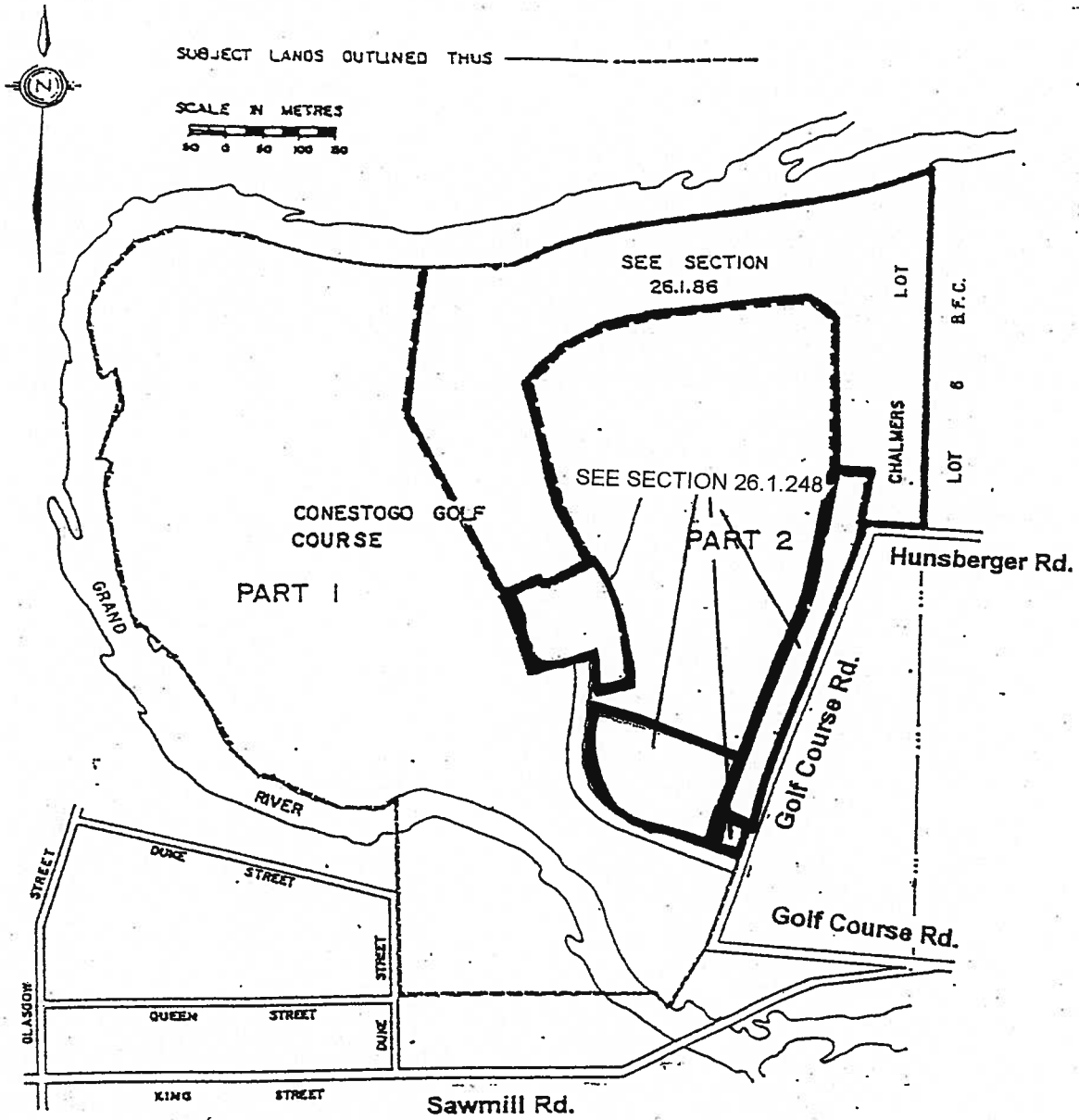
THIS IS SCHEDULE 'A' TO BY-LAW _____,
 PASSED THIS _____ DAY OF _____, 198 .

 MAYOR

 CLERK

PART OF CHALMERS LOT &
PART OF LOT 41 G.C.T.
TOWNSHIP OF WOOLWICH

SCHEDULE A 2



THIS IS PART 15.1 OF SCHEDULE 'B' TO BY-LAW _____
PASSED THIS _____ DAY OF _____

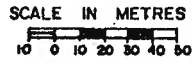
MAYOR

CLERK

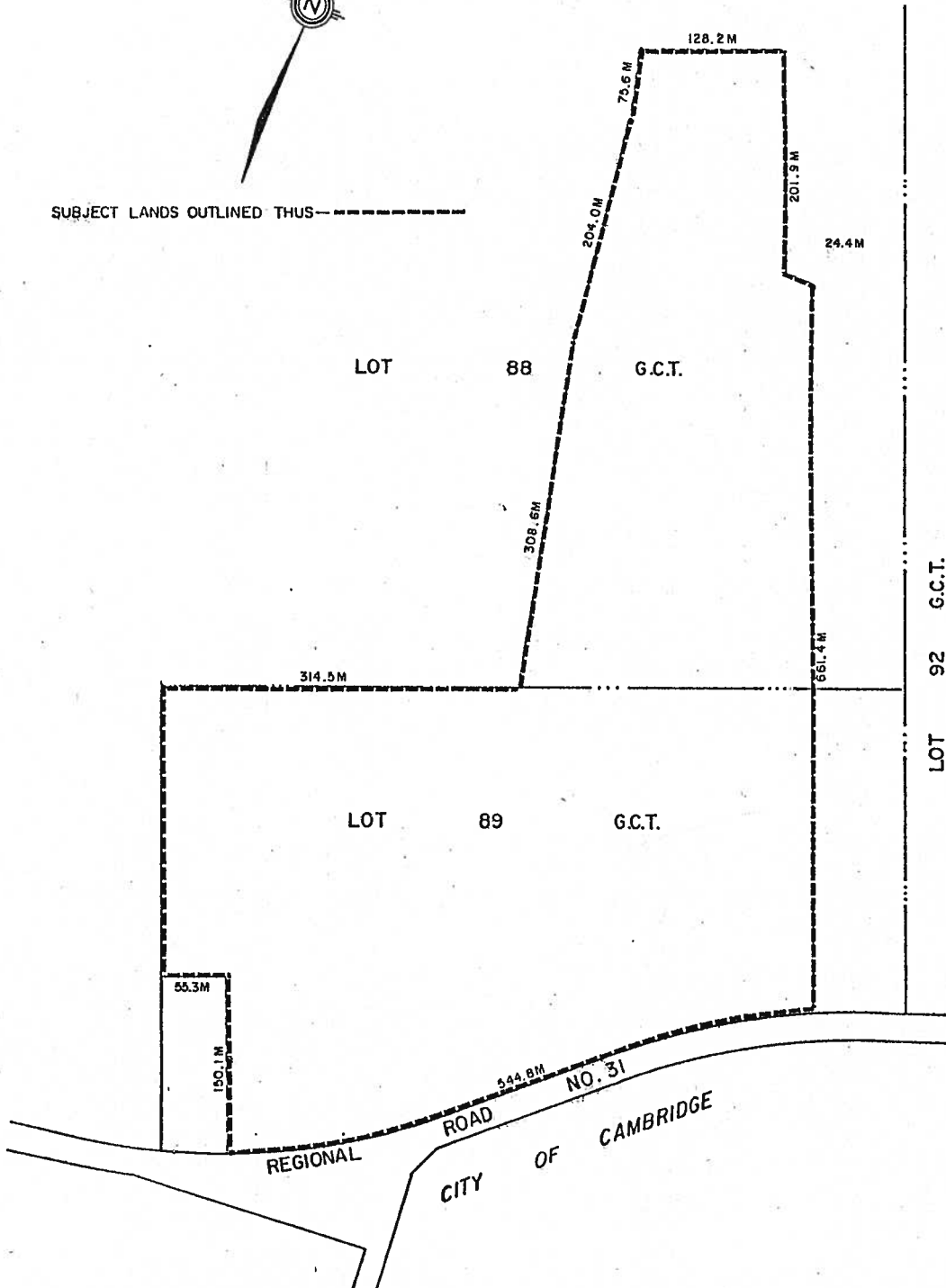
SEE PART 15.1 SCHEDULE 'B'

SECTION 26.1.48

PART OF LOTS 88 G.C.T. & 89 G.C.T.
TOWNSHIP OF WOOLWICH



SUBJECT LANDS OUTLINED THUS-----




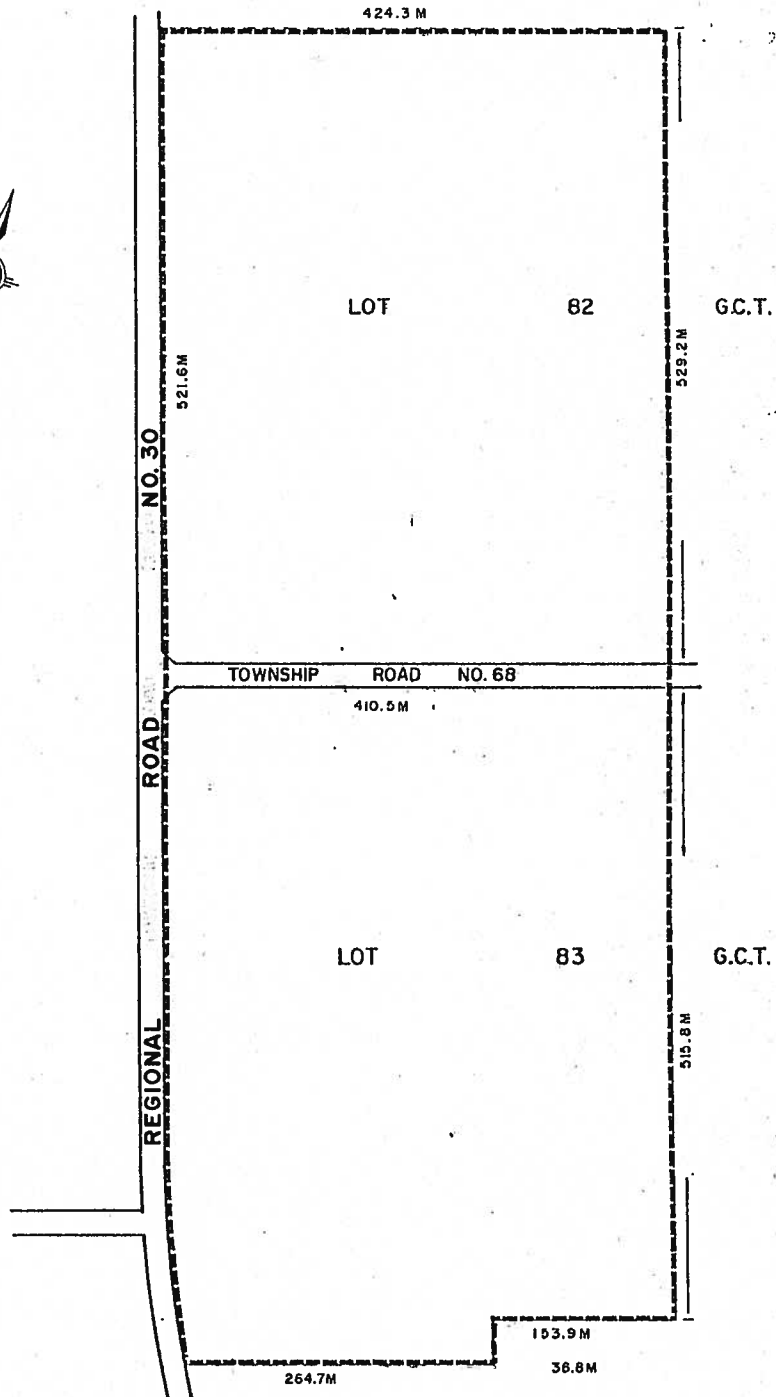
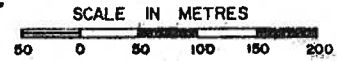
THIS IS SCHEDULE 'A' TO BY-LAW _____
PASSED THIS _____ DAY OF _____, 198 _____.

MAYOR

CLERK

PART OF LOTS 82 G.C.T. & 83 G.C.T. TOWNSHIP OF WOOLWICH

SUBJECT LANDS OUTLINED THUS 



THIS IS SCHEDULE 'A' TO BY-LAW _____,
PASSED THIS _____ DAY OF _____, 198 .

MAYOR

CLERK