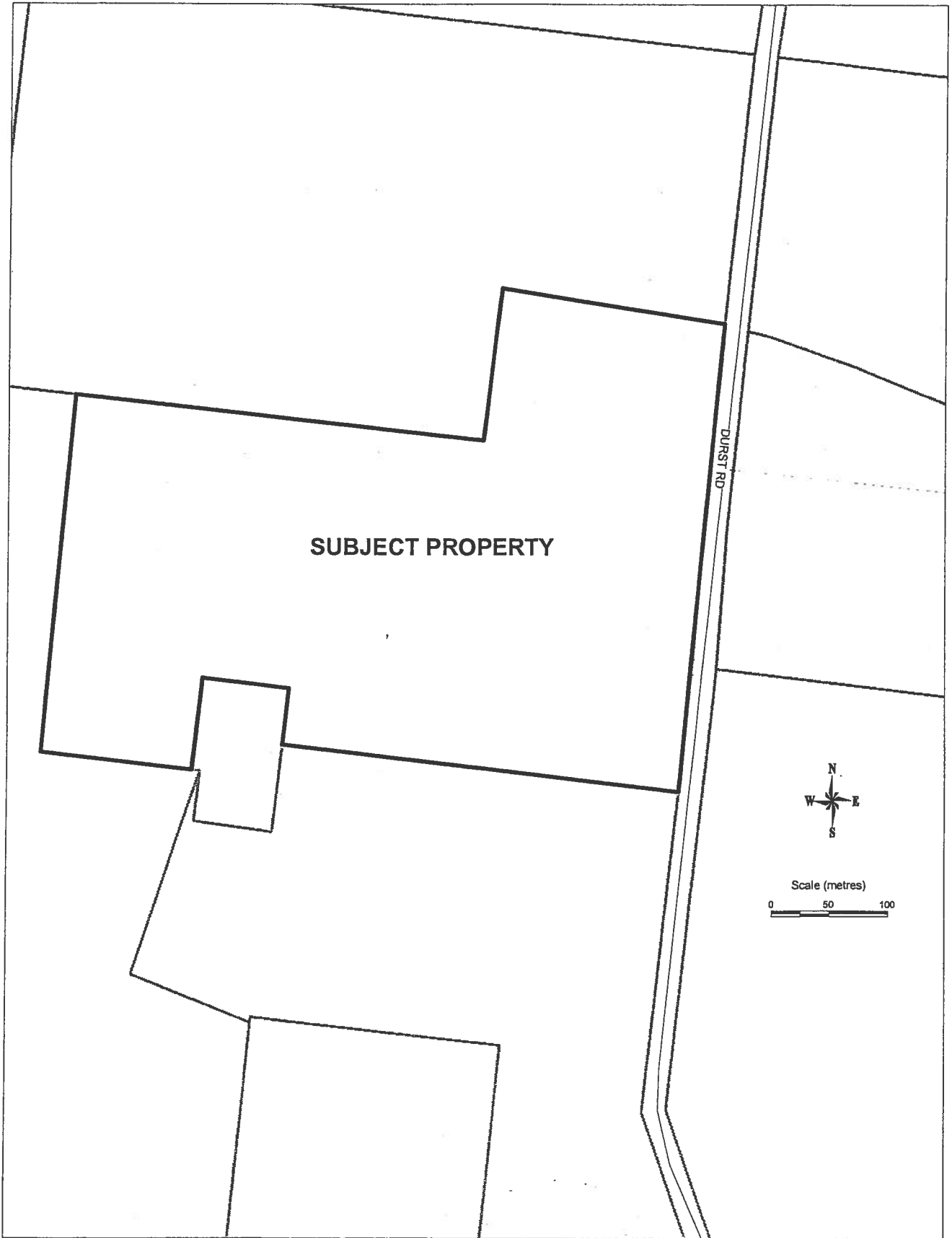
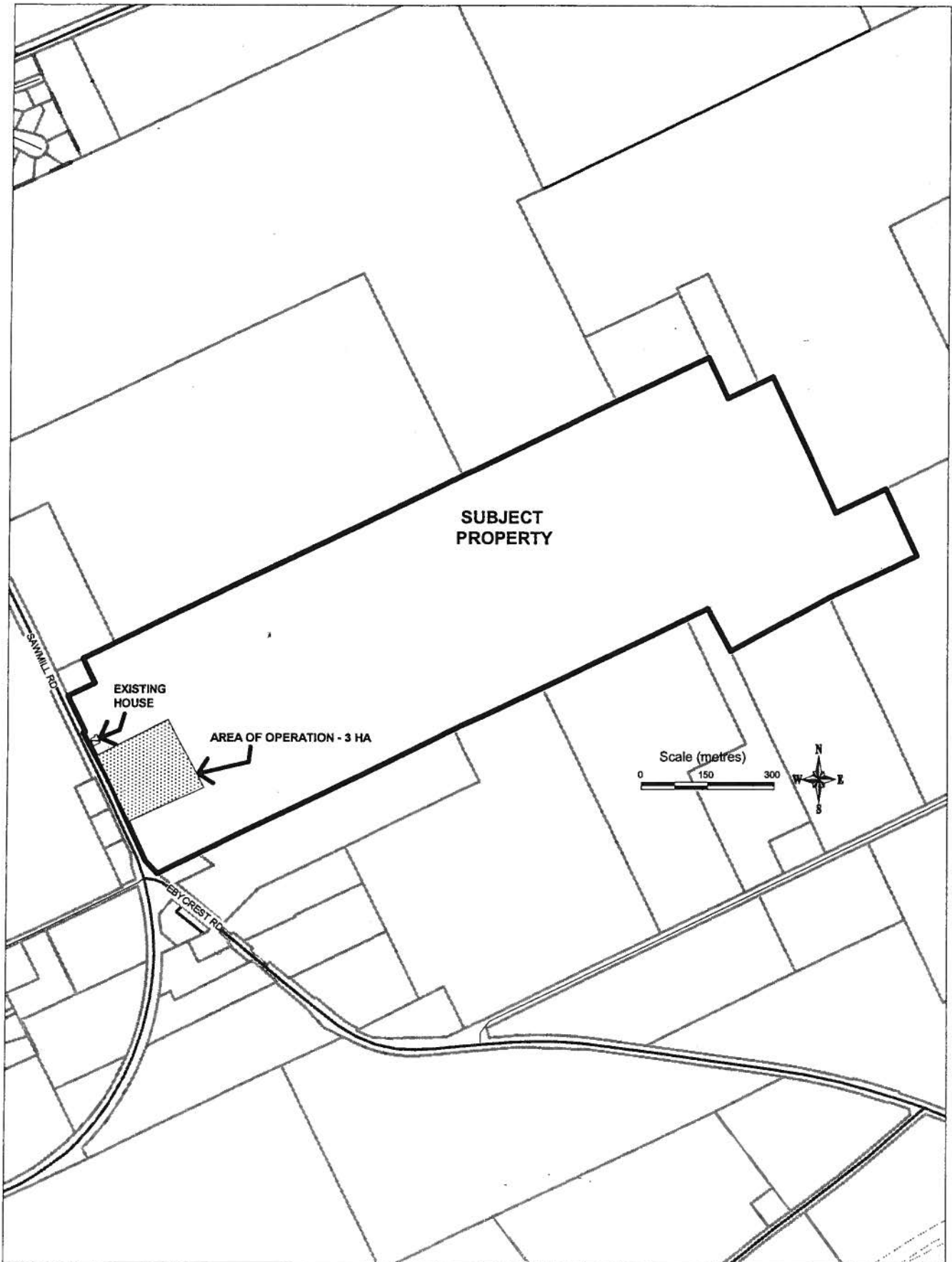


PART LOT 15 AND 16 GCT
DURST ROAD

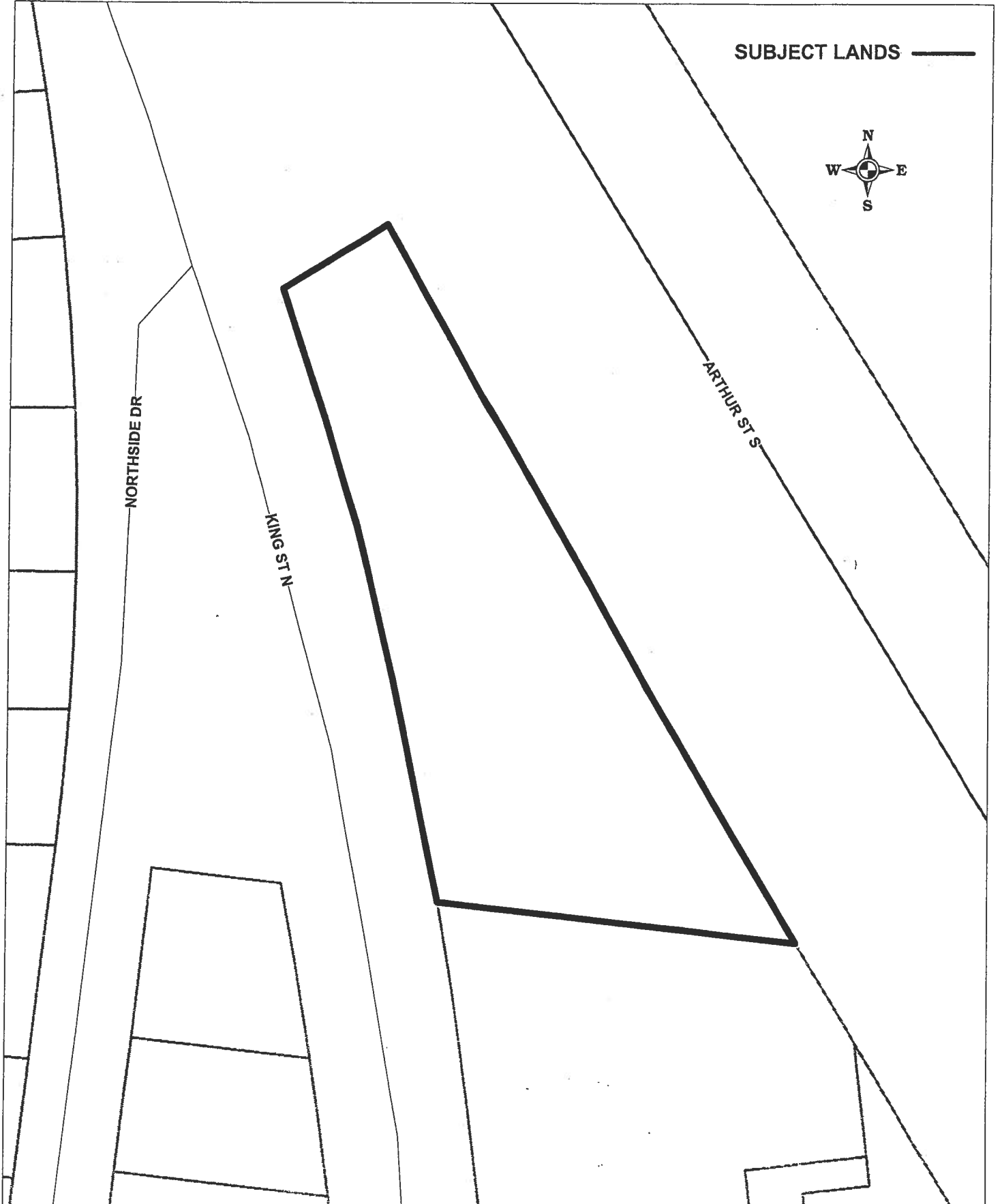


SECTION 26.1.301.

PART LOT 70 AND 72 GCT
544 SAWMILL ROAD (ROSENDALE)



**LOT 10, PLAN 1547
PART 4, PLAN 58R-398
TOWNSHIP OF WOOLWICH**



SUBJECT LANDS ———



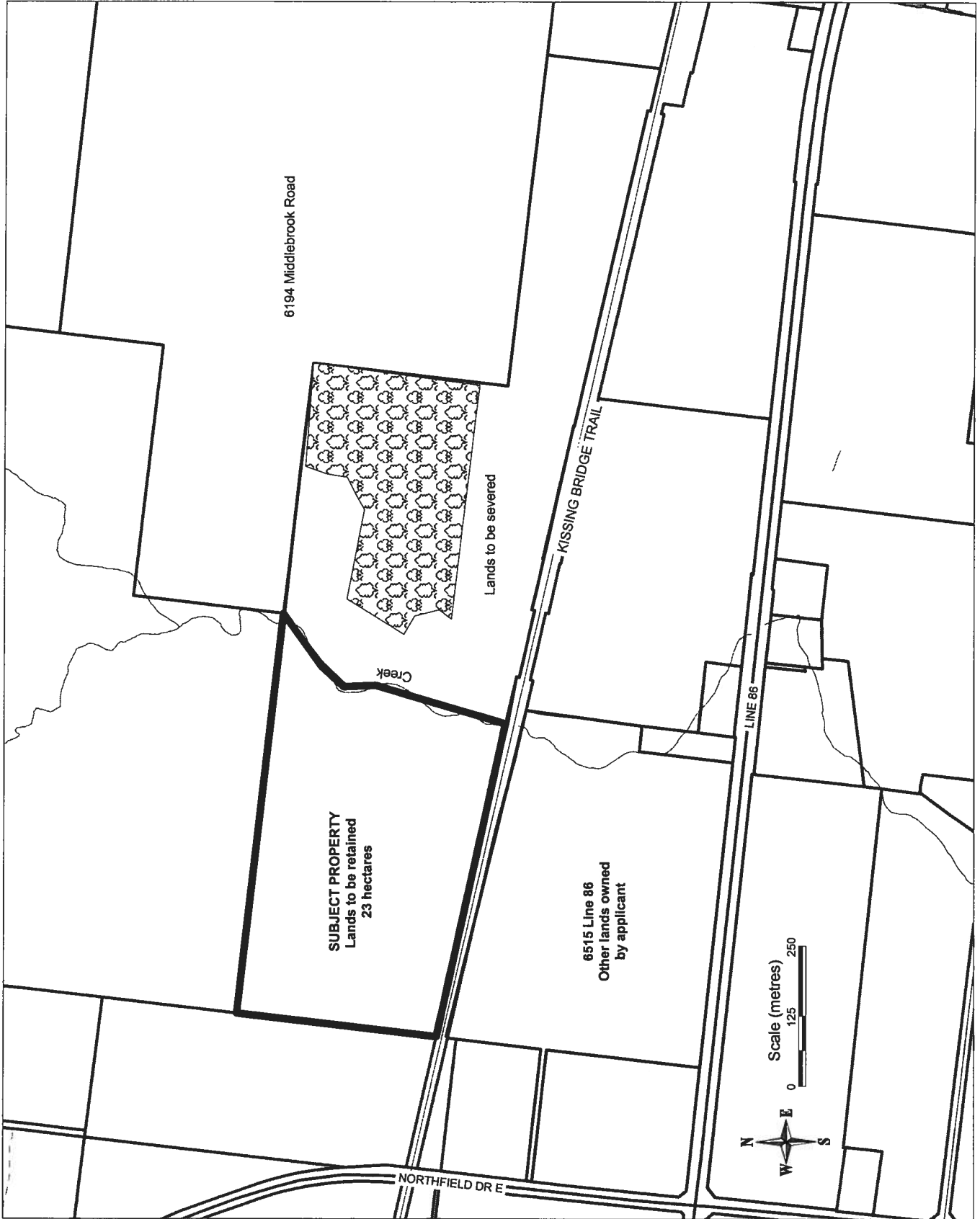
NORTHSIDE DR

KING ST N

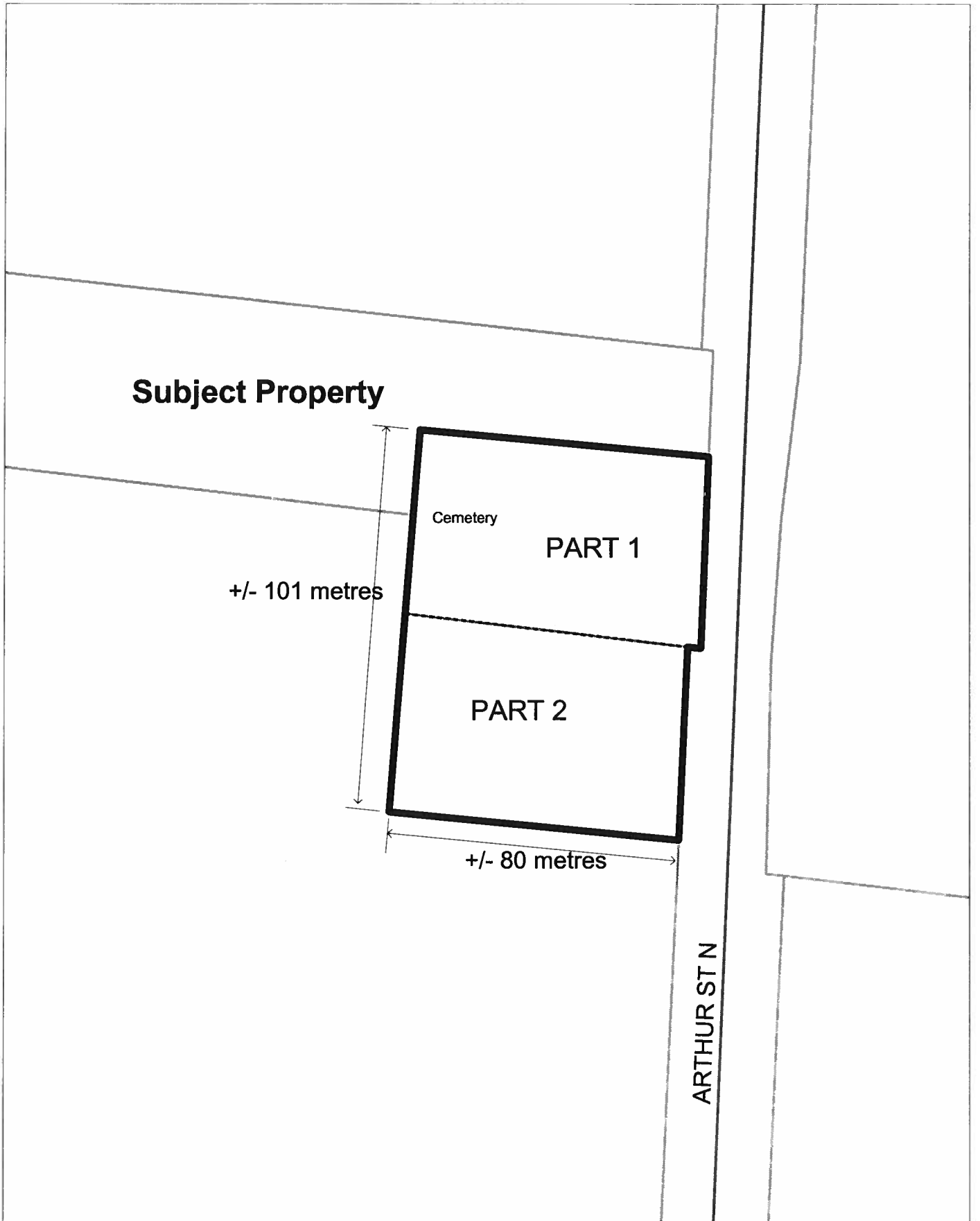
ARTHUR ST S

SECTION 26.1.303

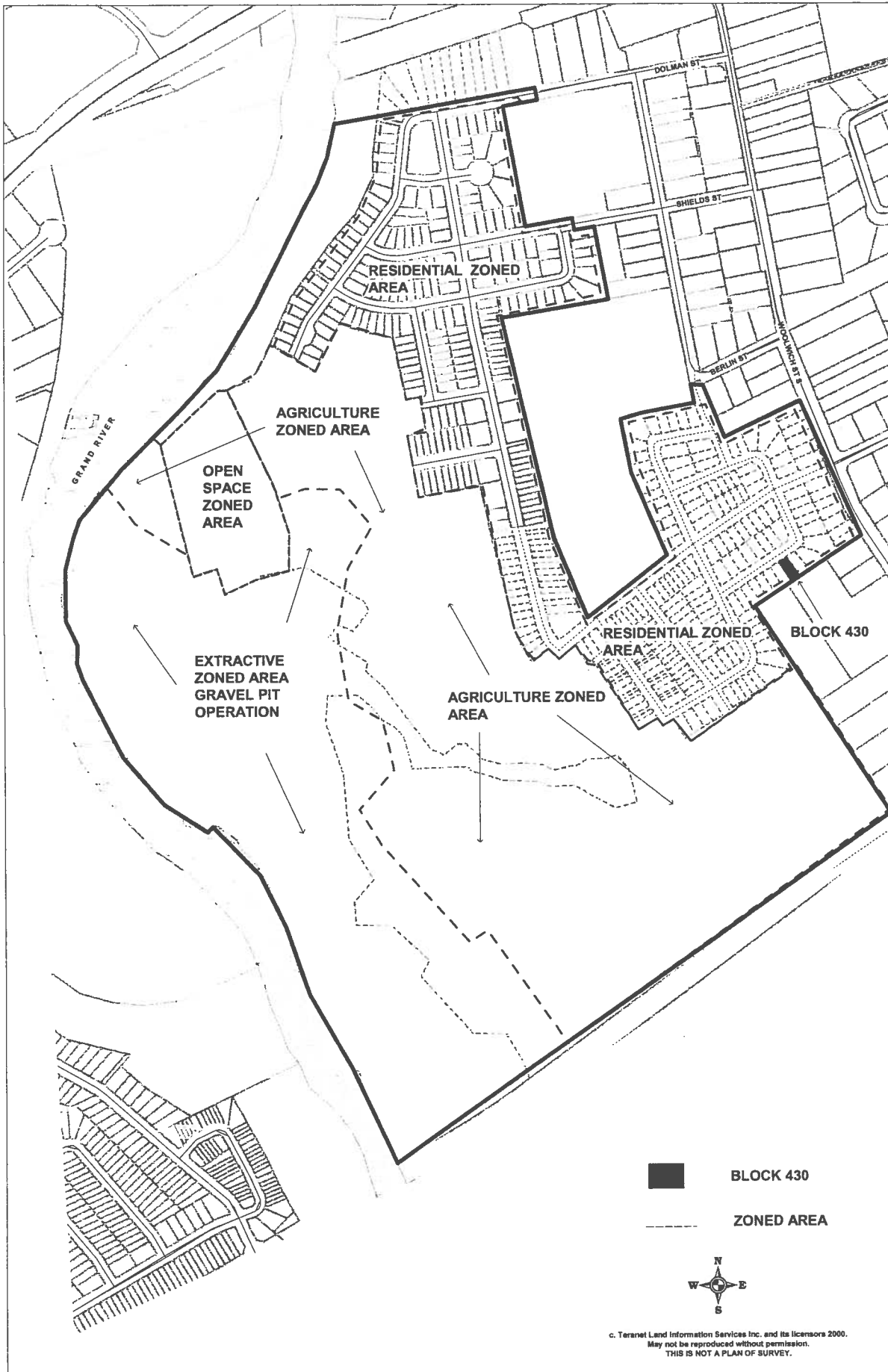
Schedule "A"
Part Lot 68 GCT
Shuh



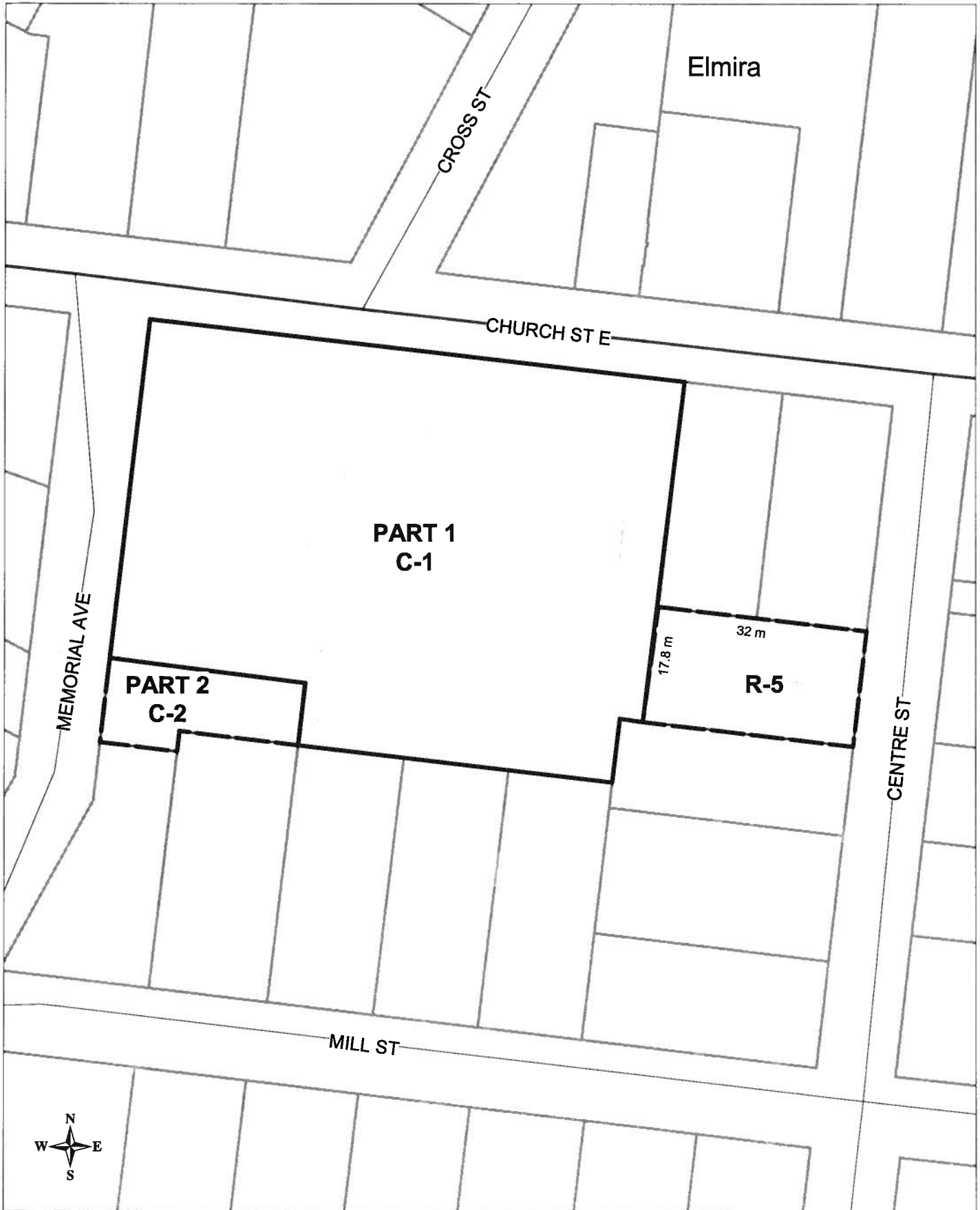
SCHEDULE A



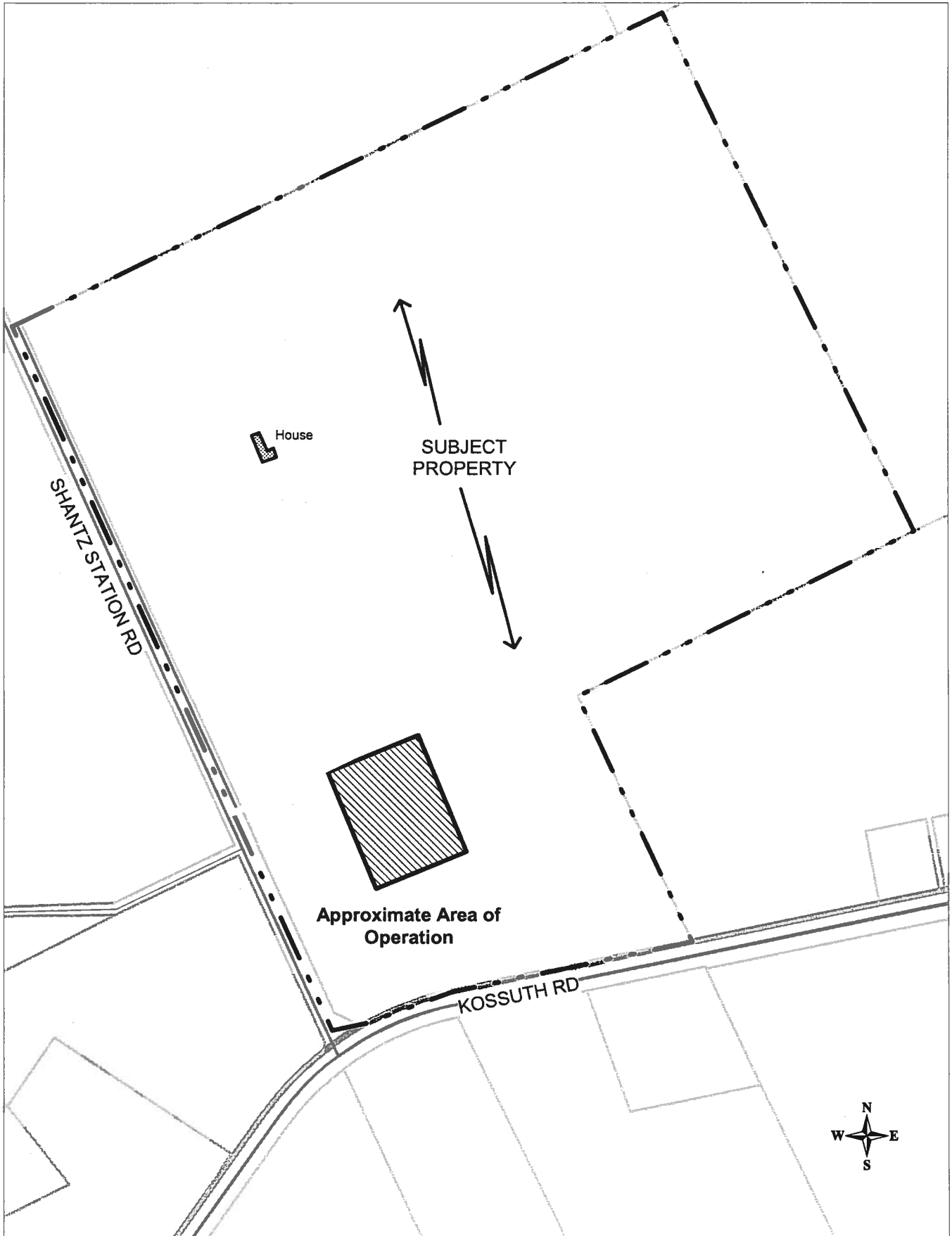
SCHEDULE A
PART LOT 114 & 115 GCT, TOWNSHIP OF WOOLWICH
PART LOTS 81 TO 86 & PART ON ERB ST. OF PLAN 588
BETWEEN WOOLWICH ST. S. AND THE GRAND RIVER IN BRESLAU



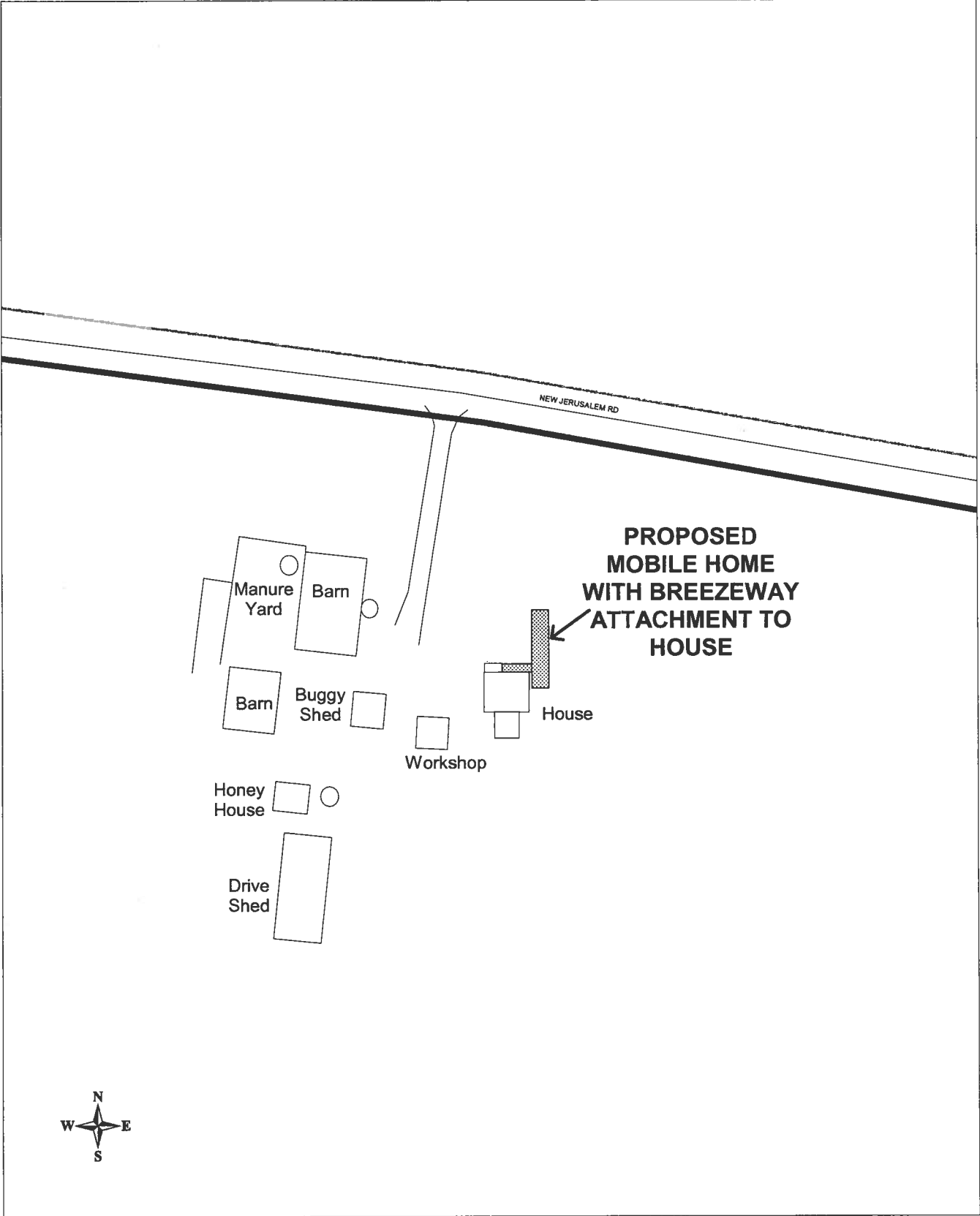
SCHEDULE A
19 Church Street East



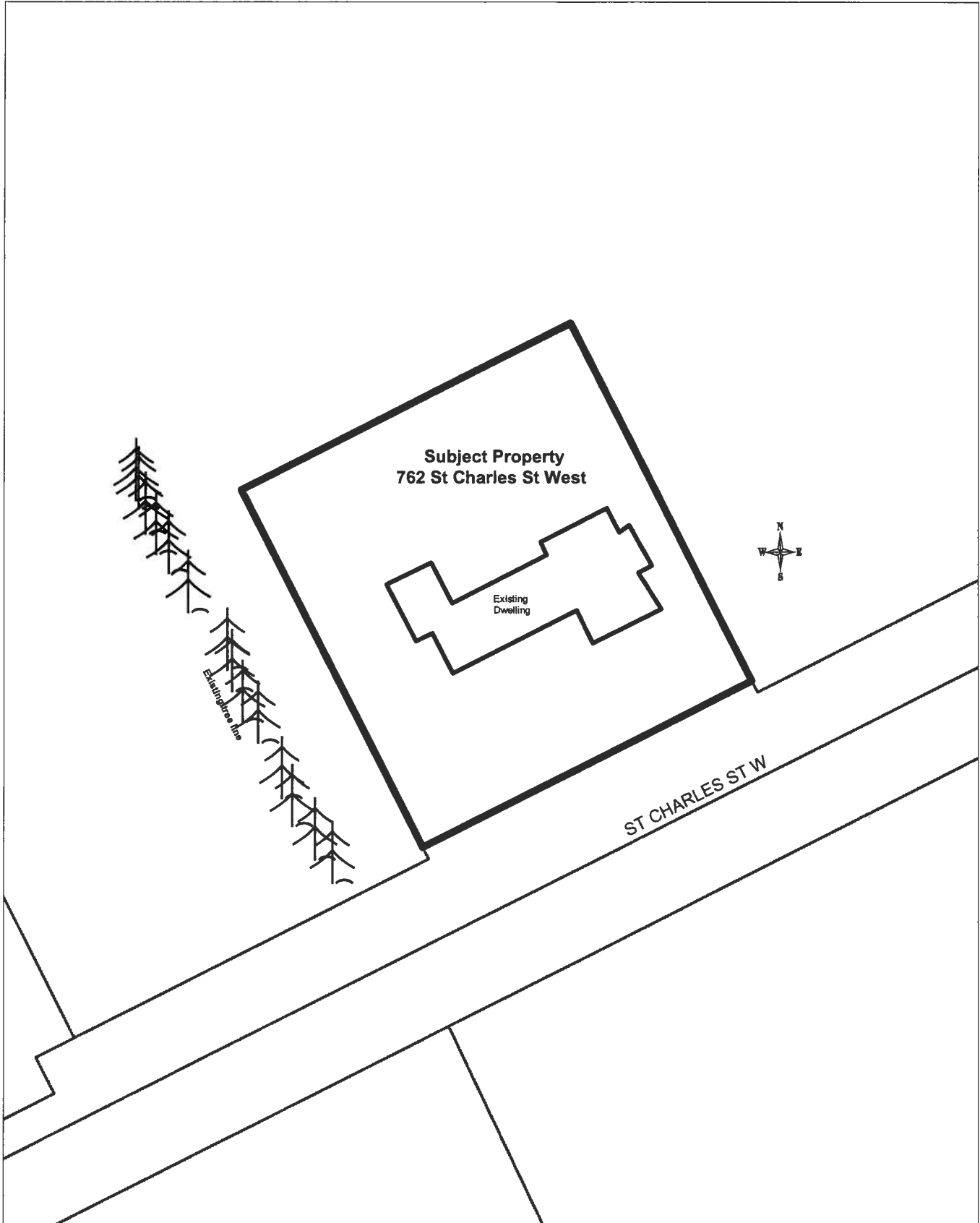
Schedule 'A'
SITE PLAN
1231 Shantz Station Road Inc.



SCHEDULE A
1172 New Jerusalem Road
GCT Part Lot 33, Plan 58R-4543 Part 1



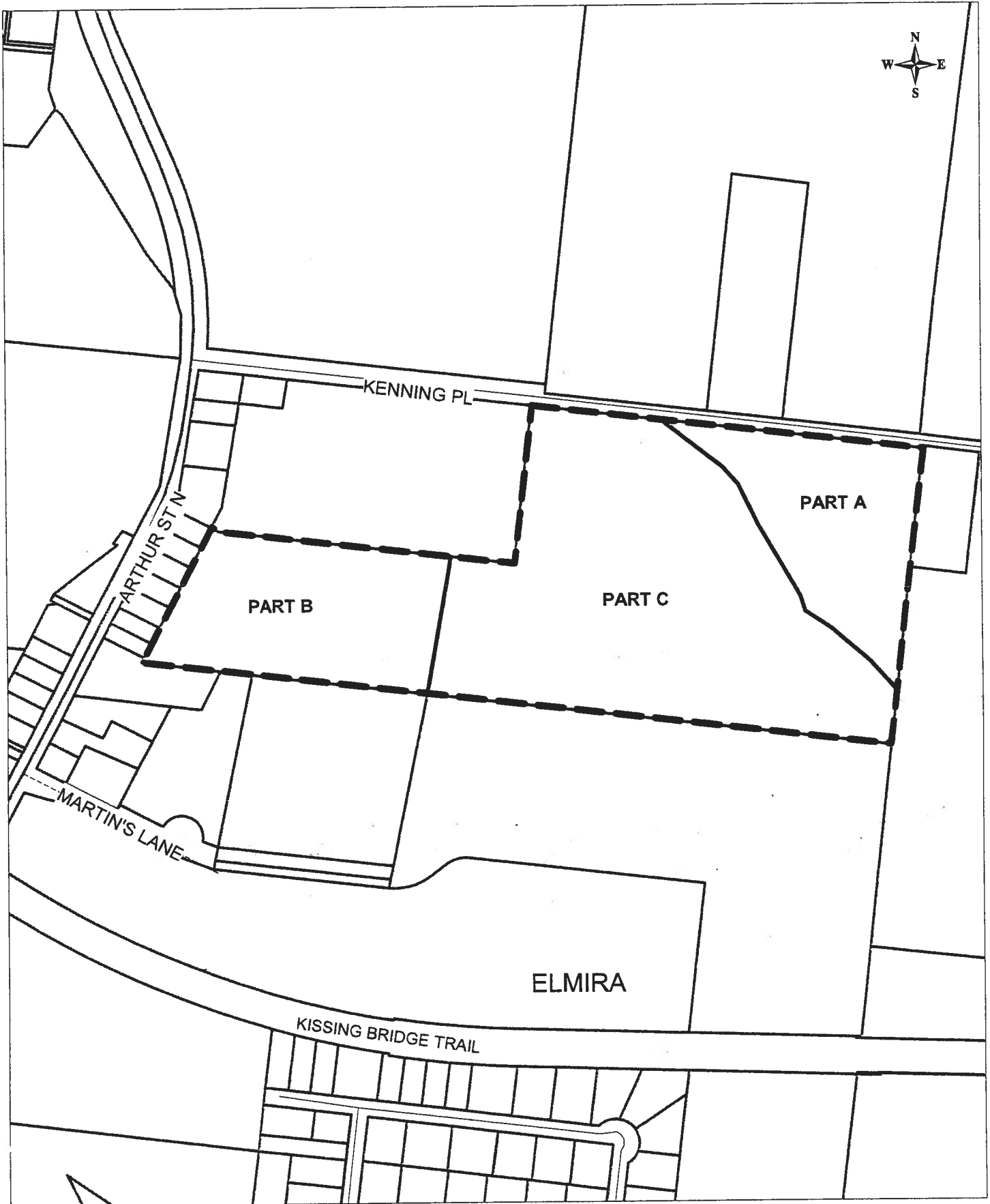
SCHEDULE A
762 St Charles St W
(Schnurr)



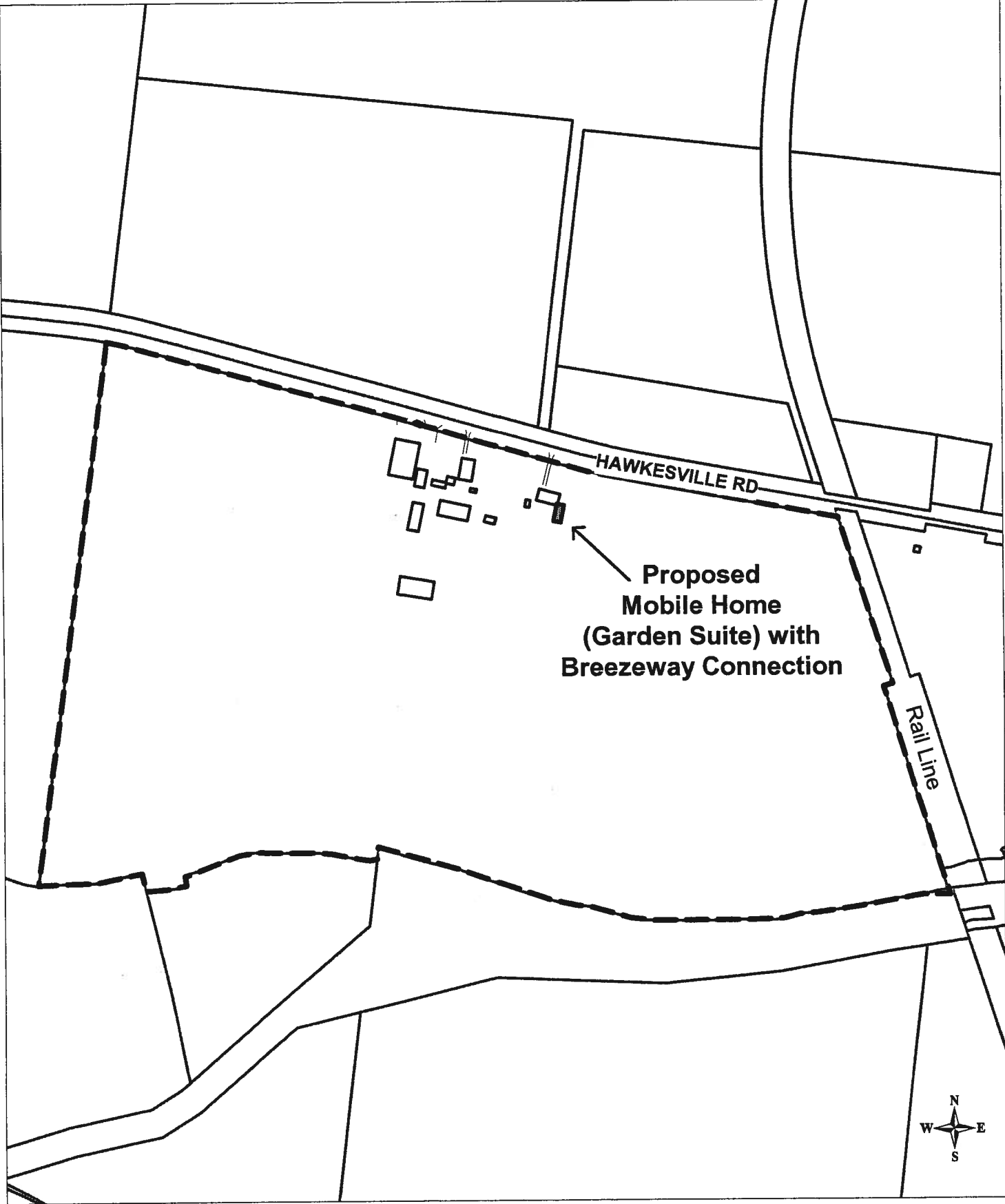
SCHEDULE A
1600 KING STREET NORTH, ST. JACOBS
TREVISAN



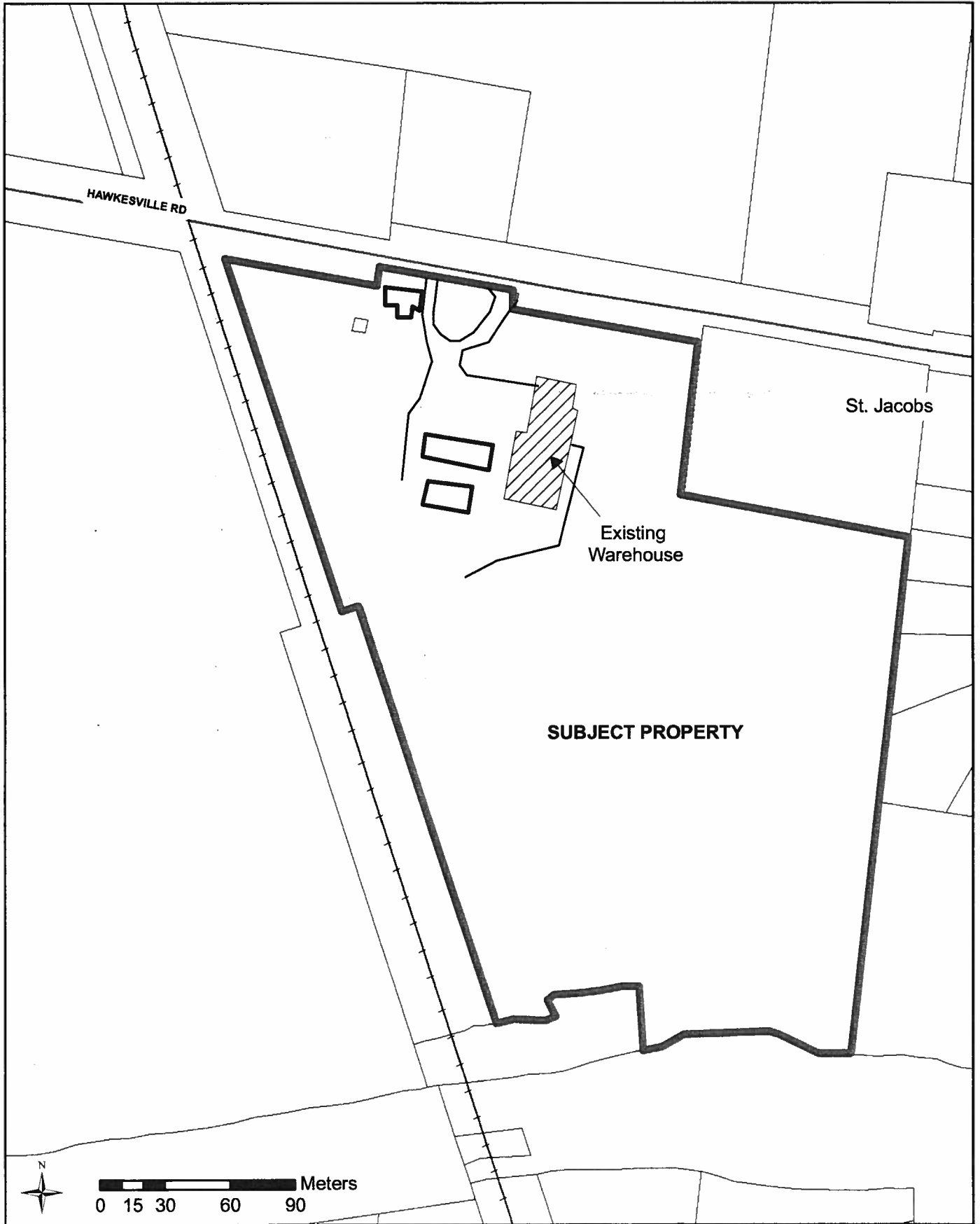
SCHEDULE A
GCT Part Lot 89 Parts 2 and 3 Plan 58R-5315
Northeast Industrial Park Ltd.



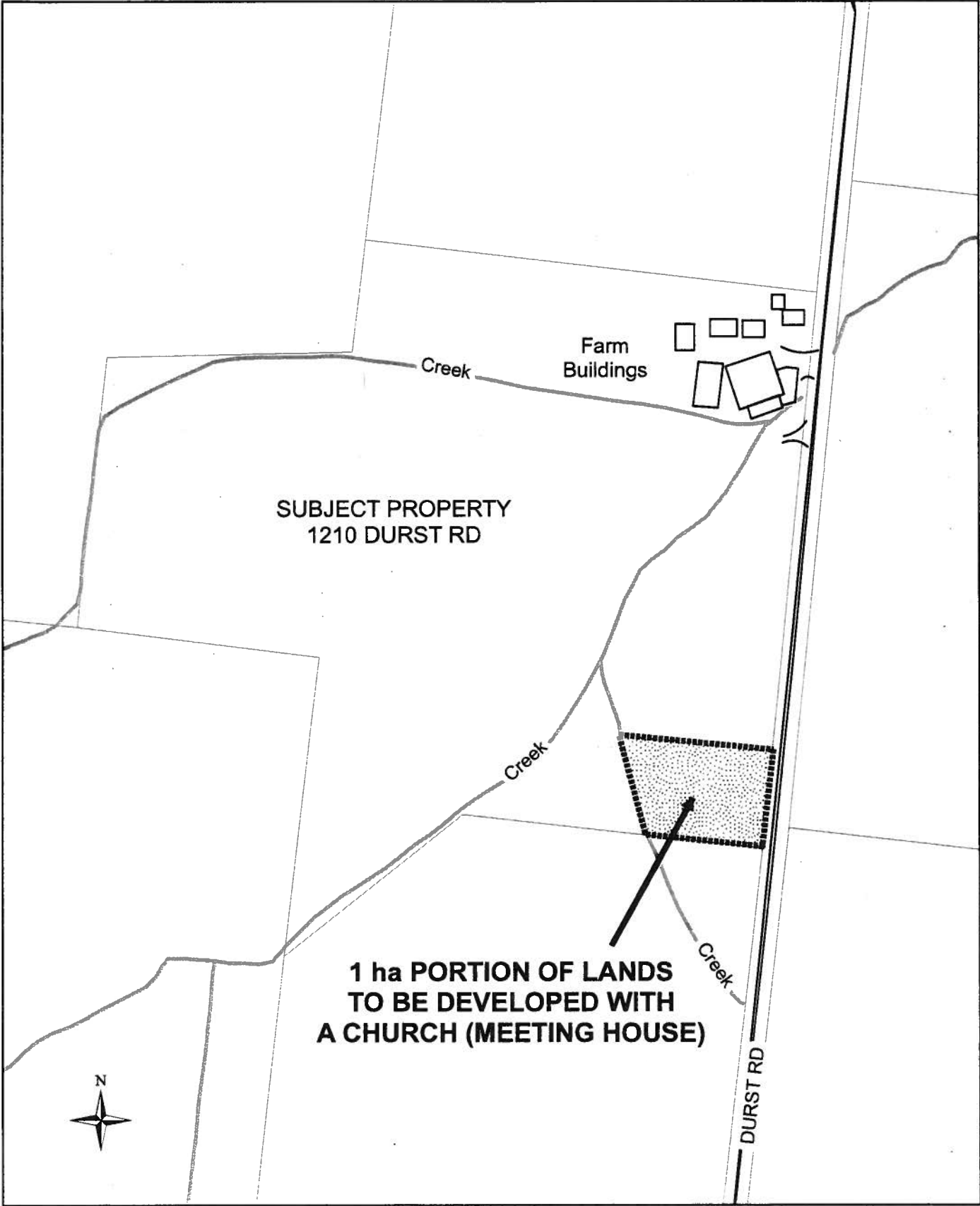
SCHEDULE 'A'
141 / 161 Hawkesville Road



Schedule 'A'
51-55 Hawksville Road
St Jacobs Produce, 650208 Ontario Limited



SCHEDULE A
Durst Road
(Martindale Church - Marvin Weber)



SCHEDULE A
30 AND 32 CHURCH STREET WEST
Plan 571 Part Lot 38 and Lot 37

ELMIRA

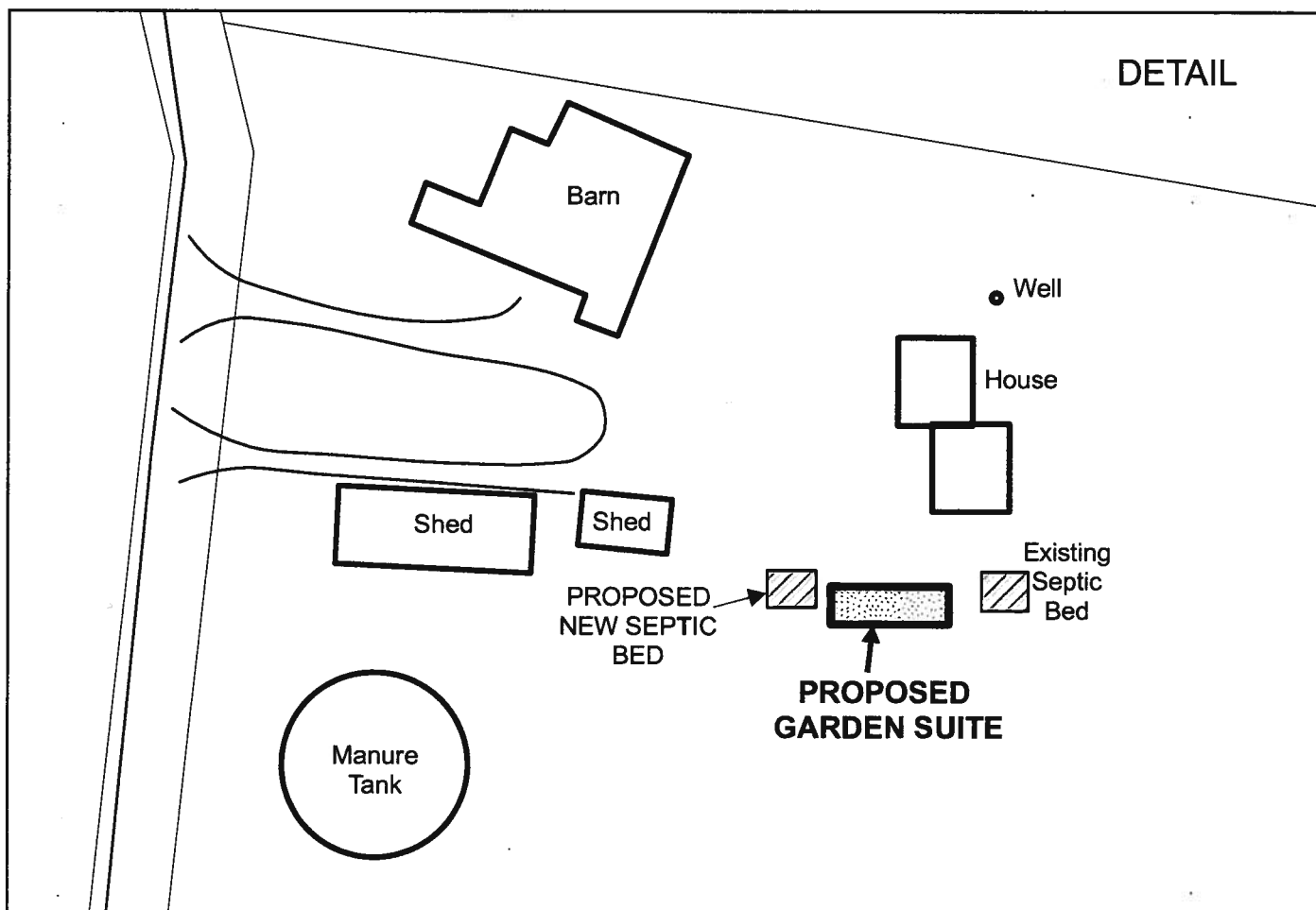
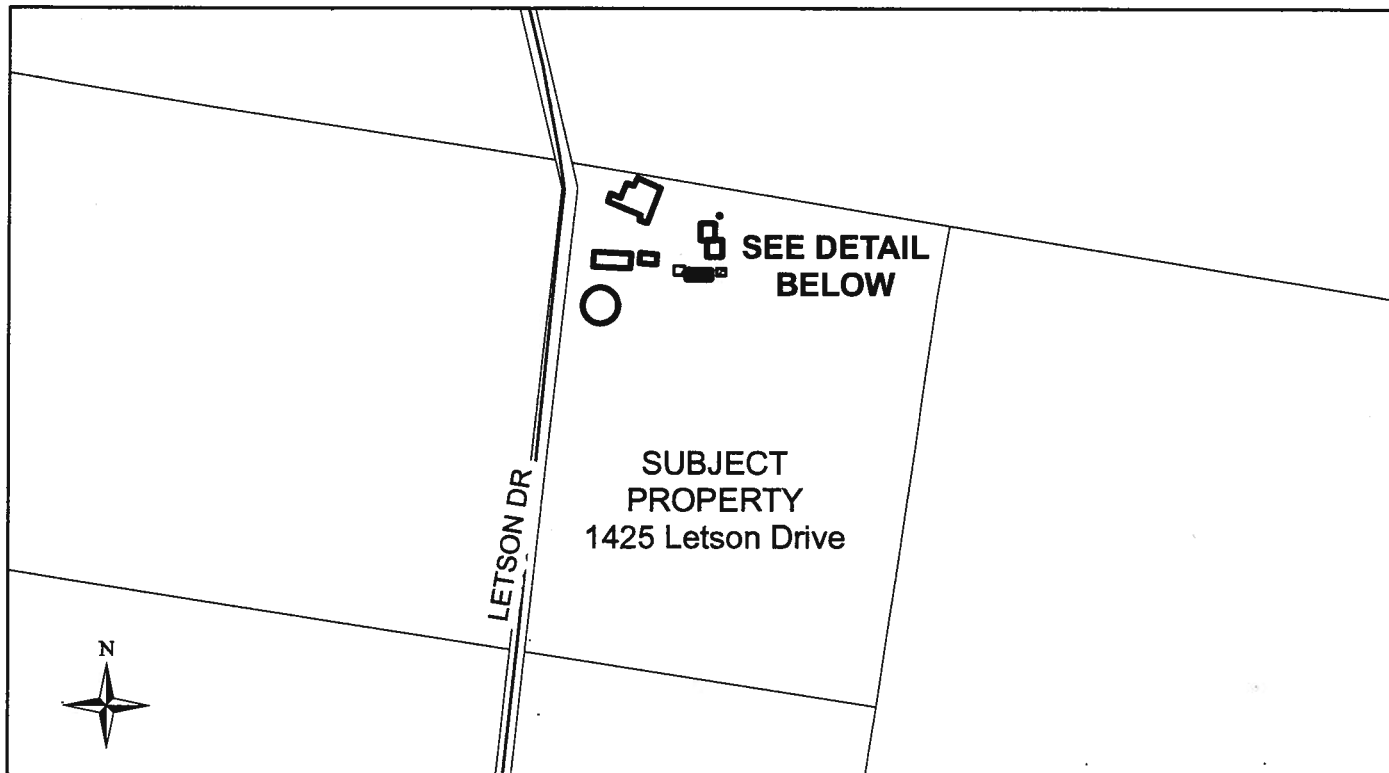
**SUBJECT
PROPERTIES
30 and 32
CHURCH ST W**



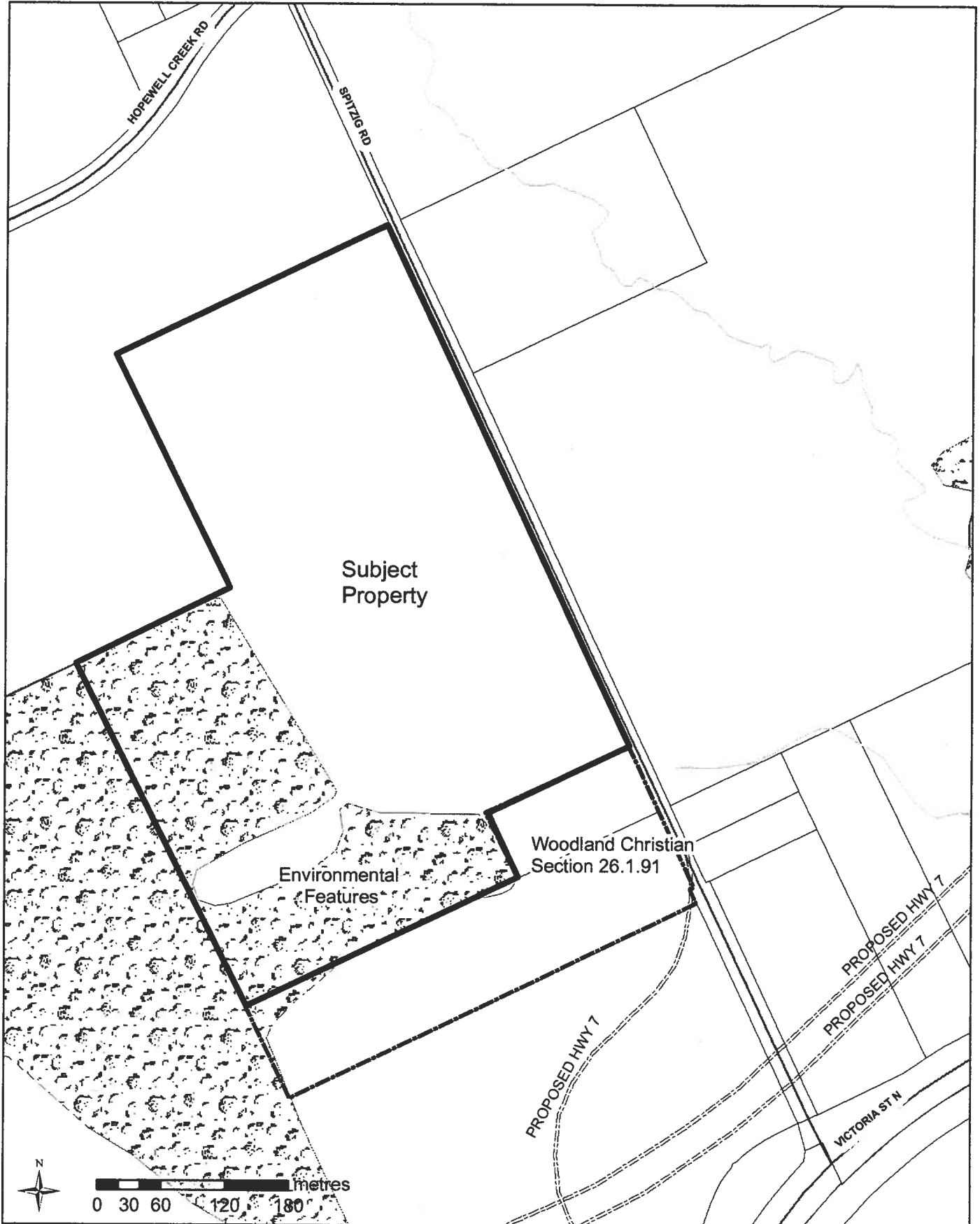
WALKER ST

CHURCH ST W

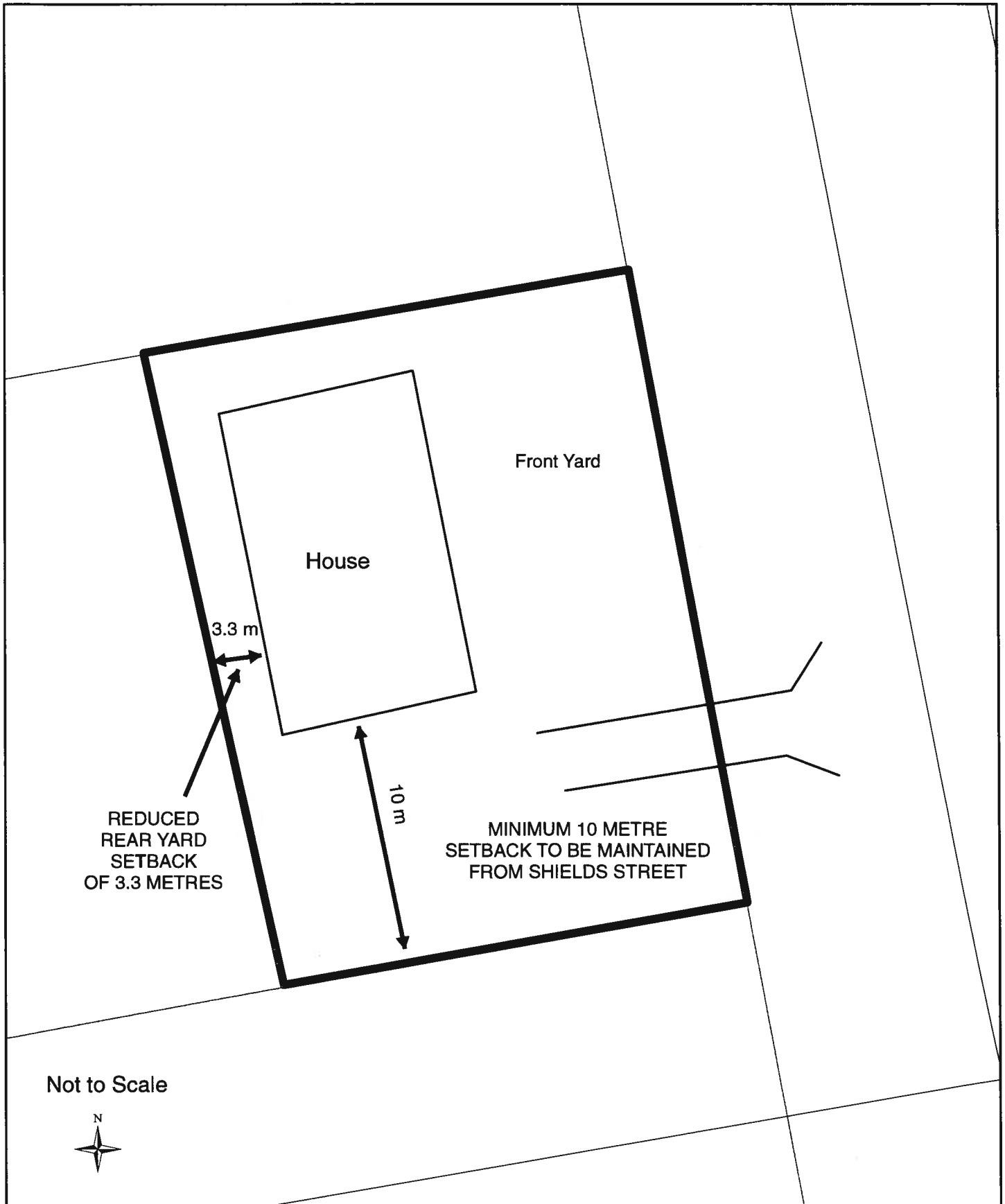
SCHEDULE A
GCT Part Lot 75
1425 Letson Drive



Schedule 'A'
Spitzig Rd
Part Lot 107 GCT and Part Lot 3 Peter Horning Tract

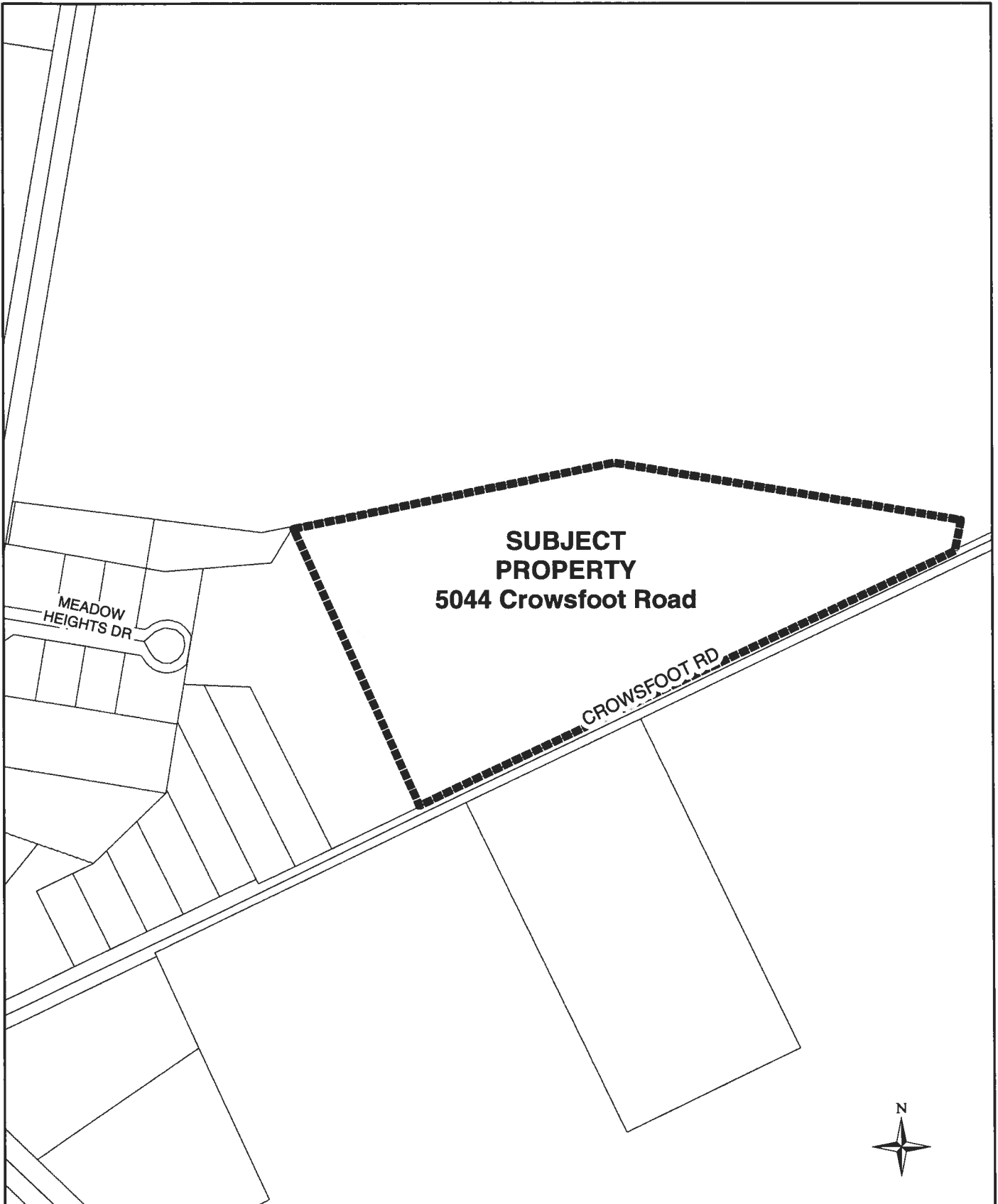


SCHEDULE A
46 Joseph Street, Breslau

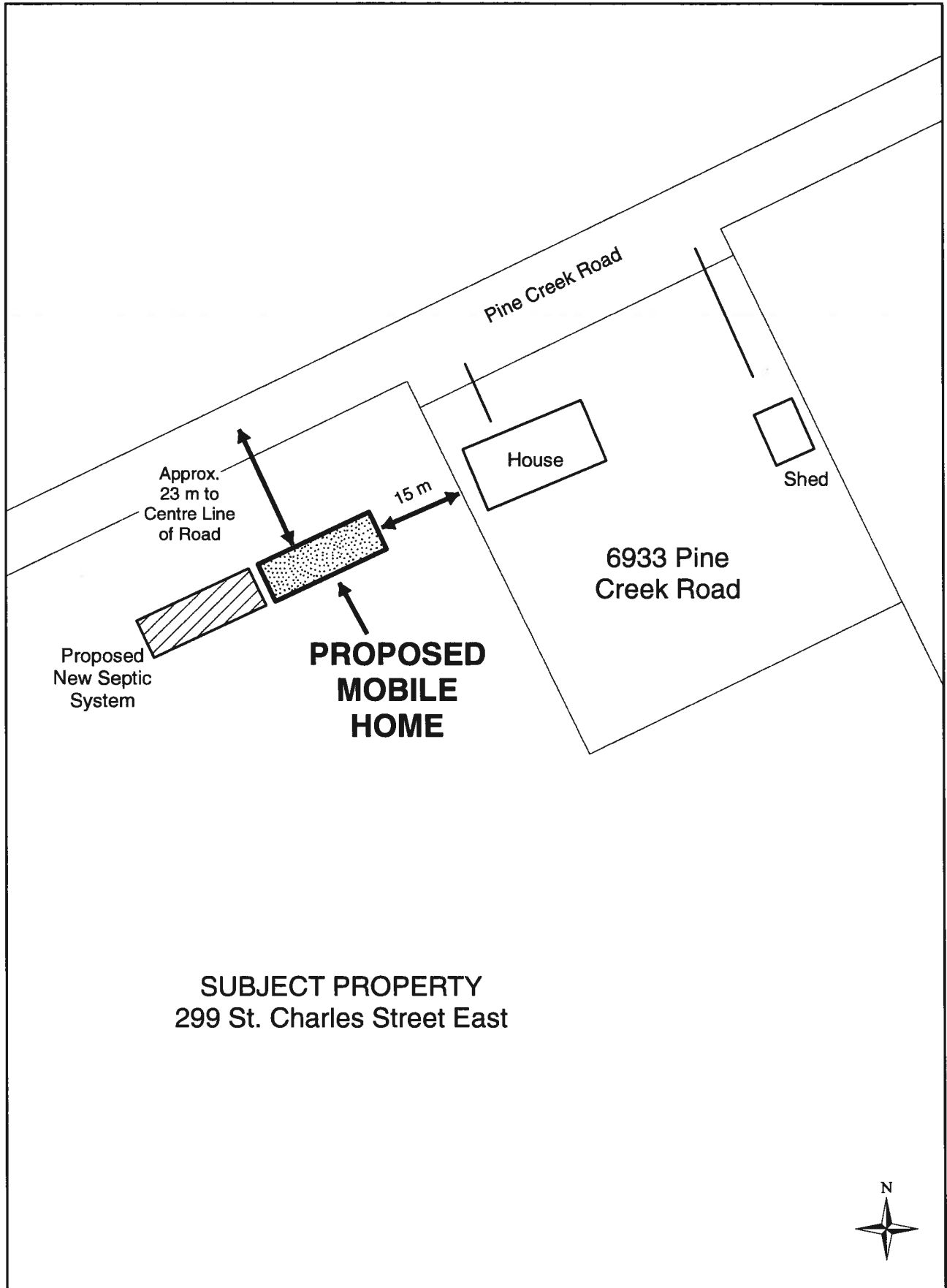


SCHEDULE A

5044 Crowsfoot Road
Crooks Tract Concession 1
East of the Grand River Part Lot 6



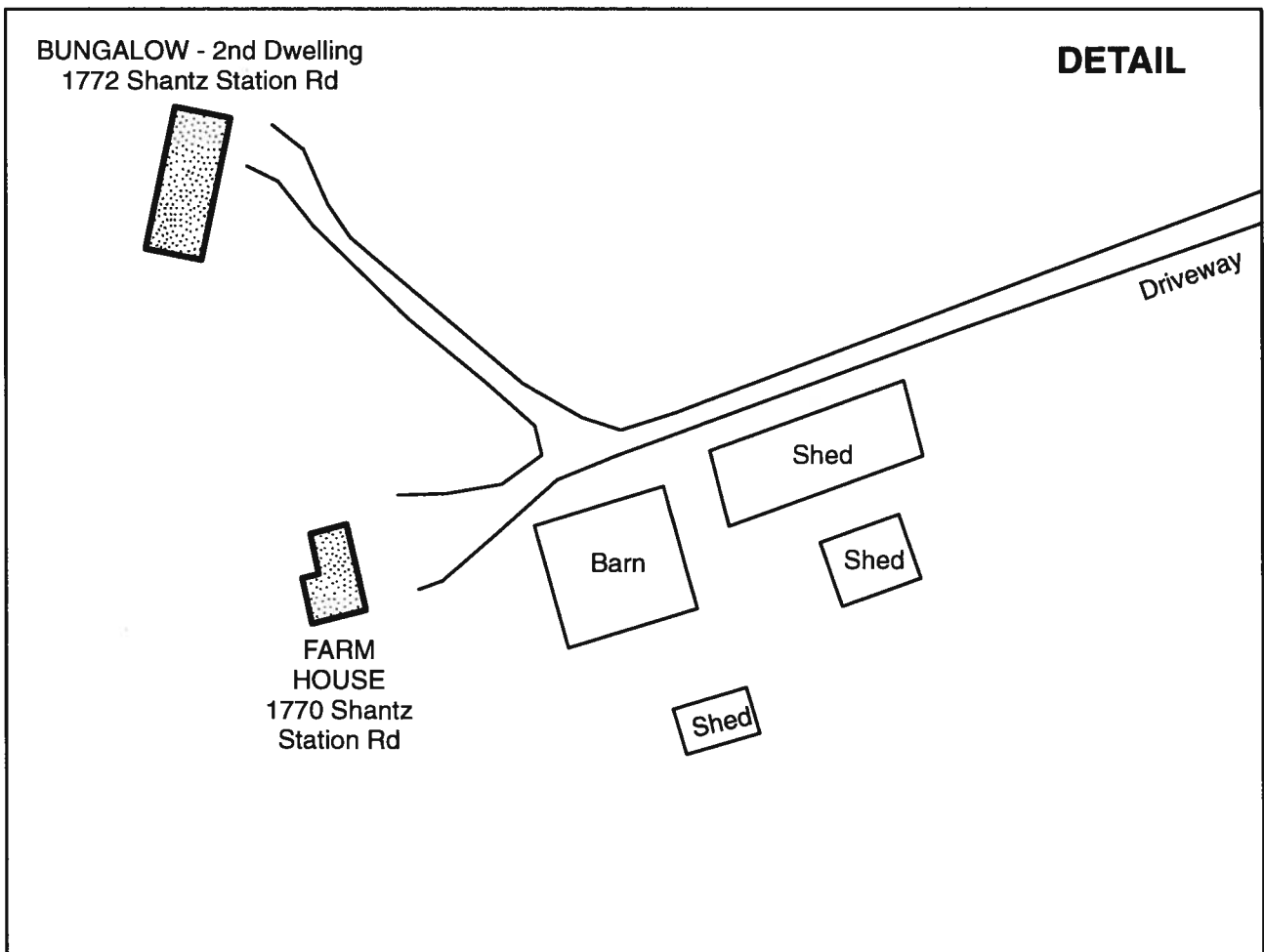
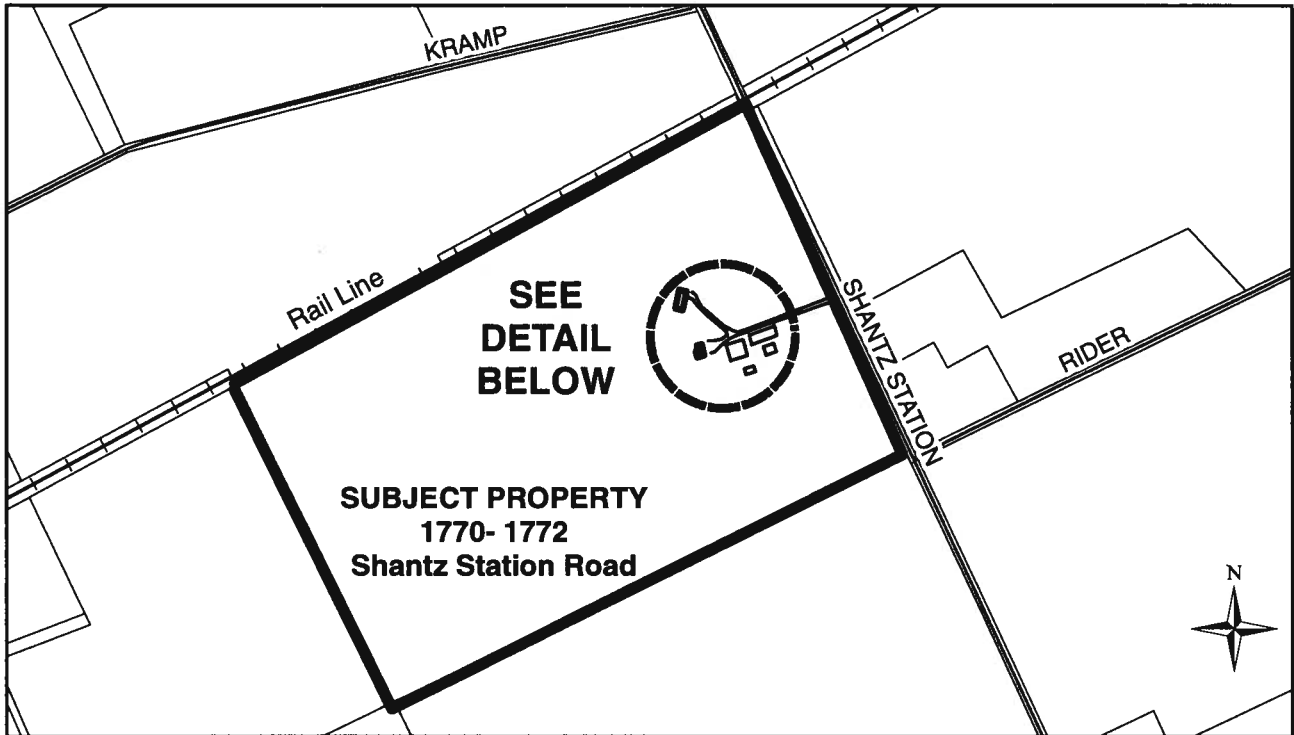
SCHEDULE A
299 St.Charles Street East
GCT Part Lot 98



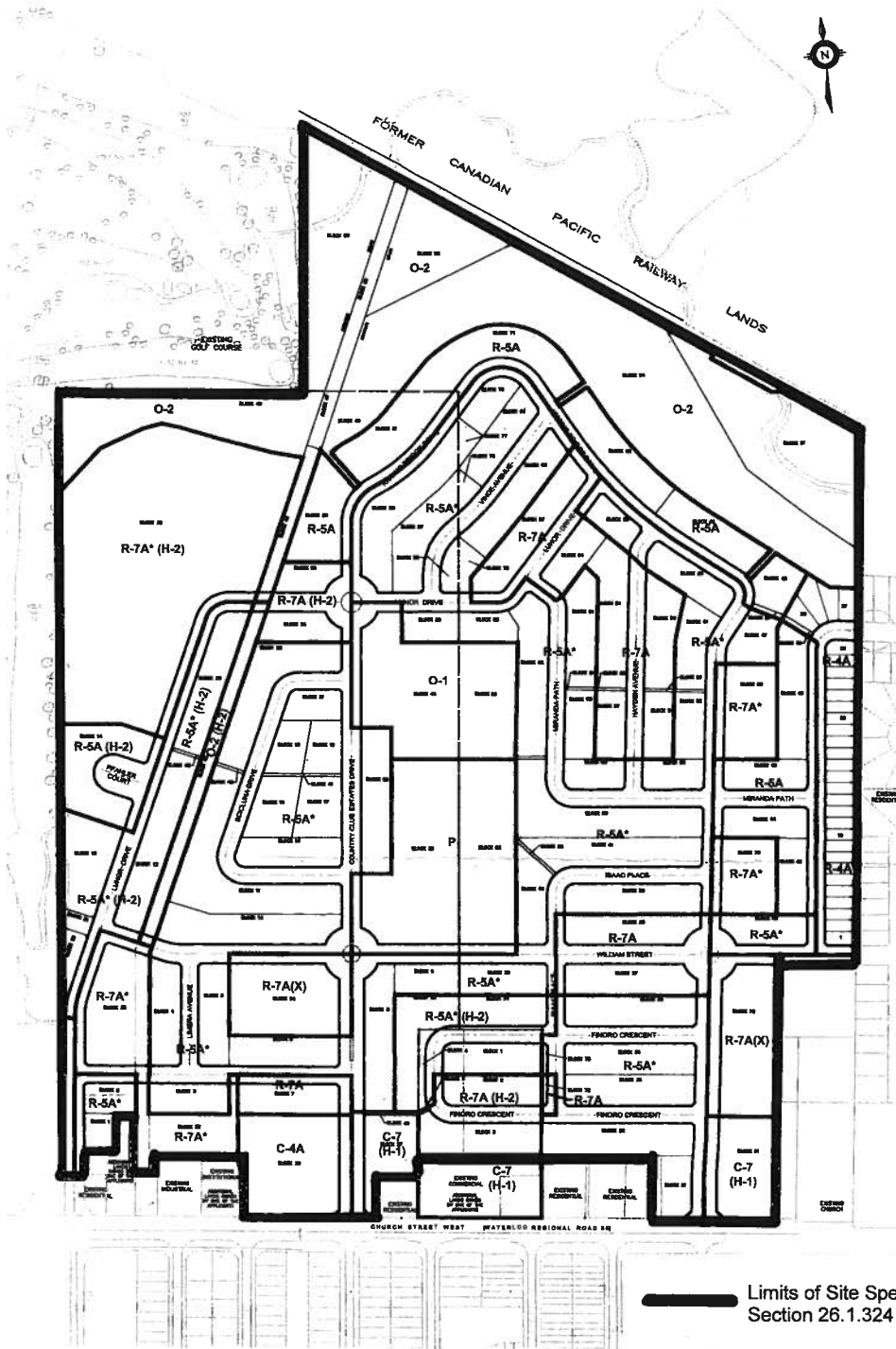
SUBJECT PROPERTY
299 St. Charles Street East



SCHEDULE A
Weide-Lea Farms Limited
1770 - 1772 Shantz Station Road
GCT Part Lot 105



SCHEDULE A
 GCT Part Lots 102 and 104
 Church Street West



— Limits of Site Specific Section 26.1.324

LEGEND

- R-4A RESIDENTIAL MIXED MEDIUM DENSITY WITH DESIGN GUIDELINES
- R-5A RESIDENTIAL MIXED HIGH DENSITY WITH DESIGN GUIDELINES
- R-5A* RESIDENTIAL MIXED HIGH DENSITY WITH DESIGN GUIDELINES (SPECIAL)
- R-7A RESIDENTIAL - MULTIPLE WITH DESIGN GUIDELINES
- R-7A* RESIDENTIAL - MULTIPLE WITH DESIGN GUIDELINES (SPECIAL)
- R-7A(X) RESIDENTIAL - MULTIPLE WITH DESIGN GUIDELINES (SPECIAL)
- C-4A CONVENIENCE COMMERCIAL
- C-7 SERVICE COMMERCIAL
- P INSTITUTIONAL
- O-1 OPEN SPACE
- O-2 OPEN SPACE
- H-1 HOLDING PROVISION
- H-2 HOLDING PROVISION