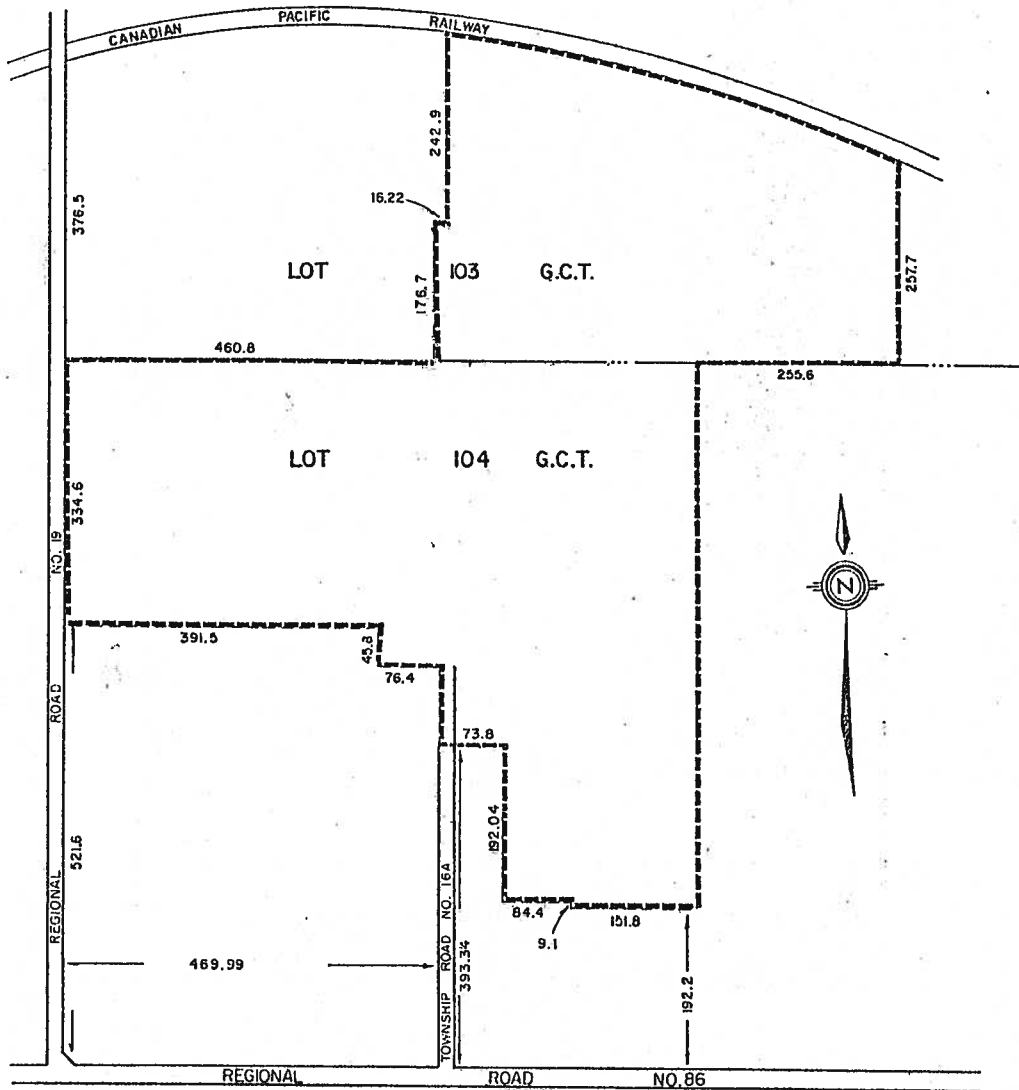
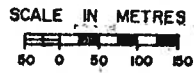


# PART OF LOTS 103 G.C.T. & 104 G.C.T. TOWNSHIP OF WOOLWICH



SUBJECT LANDS OUTLINED THUS

THIS IS SCHEDULE 'A' TO BY-LAW \_\_\_\_\_,  
PASSED THIS \_\_\_\_\_ DAY OF \_\_\_\_\_, 198 .

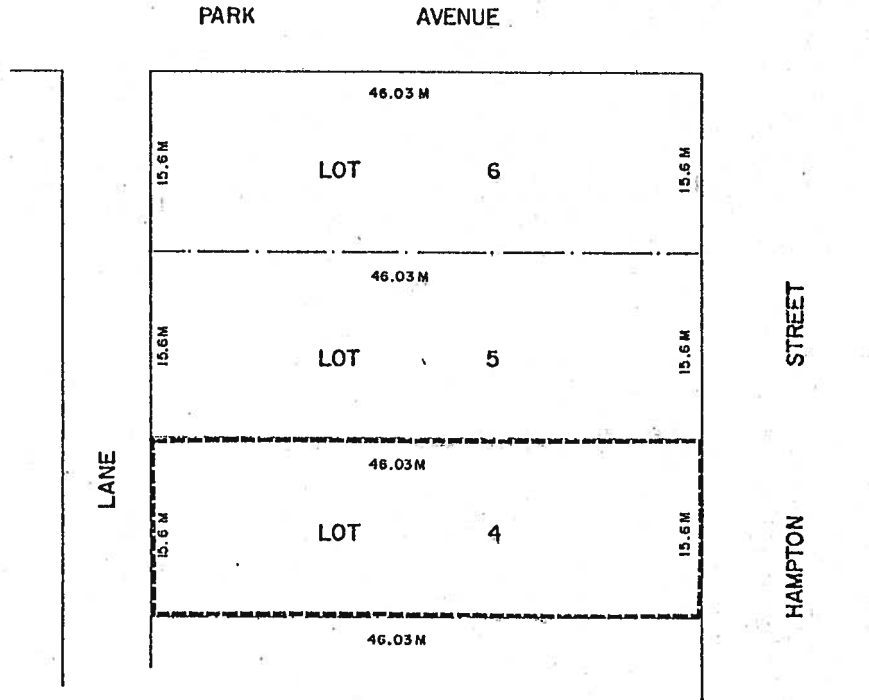
\_\_\_\_\_  
MAYOR

\_\_\_\_\_  
CLERK

LOT 4 , REGISTERED PLAN NO.568  
(ELMIRA SETTLEMENT AREA)  
TOWNSHIP OF WOOLWICH



SUBJECT LANDS OUTLINED THUS 



THIS IS SCHEDULE 'A' TO BY-LAW \_\_\_\_\_  
PASSED THIS \_\_\_\_\_ DAY OF \_\_\_\_\_, 198 .

\_\_\_\_\_  
MAYOR

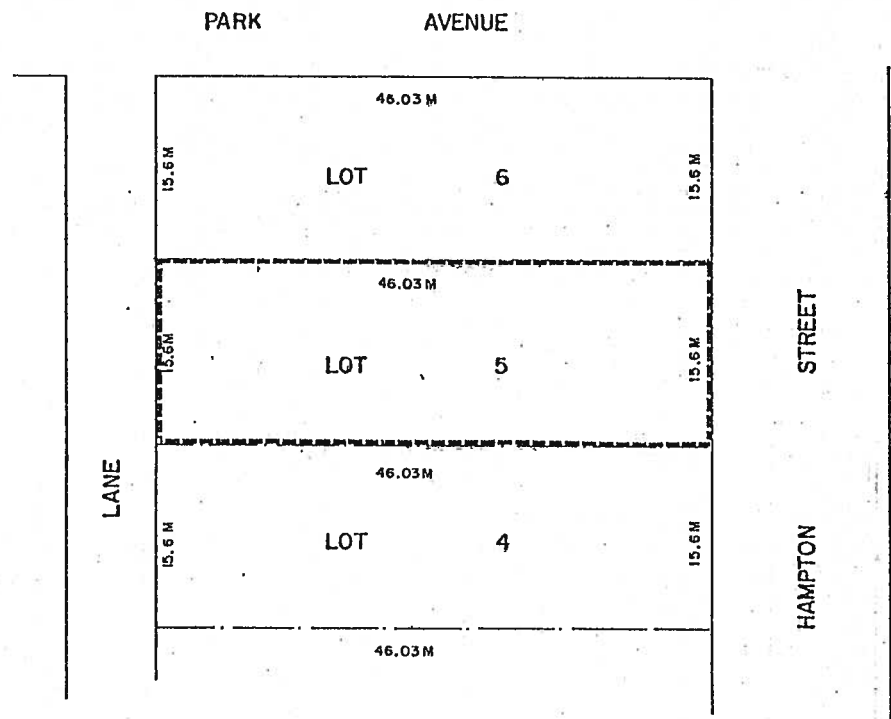
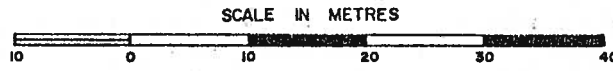
\_\_\_\_\_  
CLERK

LOT 5 REGISTERED PLAN 568  
(ELMIRA SETTLEMENT AREA)



TOWNSHIP OF WOOLWICH

SUBJECT LANDS OUTLINED THUS -----



THIS IS SCHEDULE 'A' TO BY-LAW \_\_\_\_\_,  
PASSED THIS \_\_\_\_\_ DAY OF \_\_\_\_\_, 198\_\_.

\_\_\_\_\_  
MAYOR

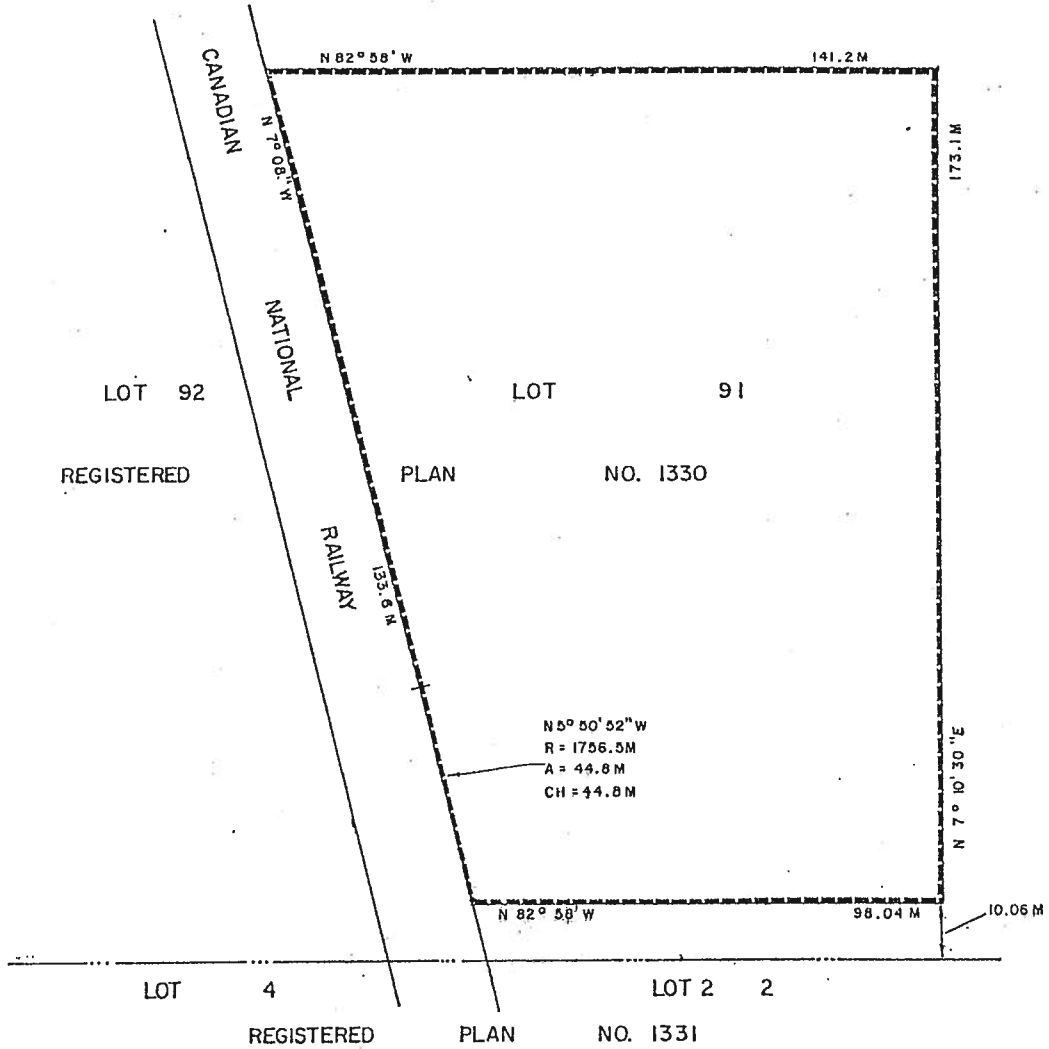
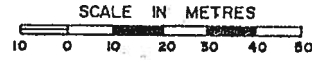
\_\_\_\_\_  
CLERK

Maps 26.1.54, 26.1.55 and 26.1.56 Deleted

PART OF LOT 91  
 REGISTERED PLAN NO. 1330  
 TOWNSHIP OF WOOLWICH  
 (ELMIRA SETTLEMENT AREA)



SUBJECT LANDS OUTLINED THIS \_\_\_\_\_



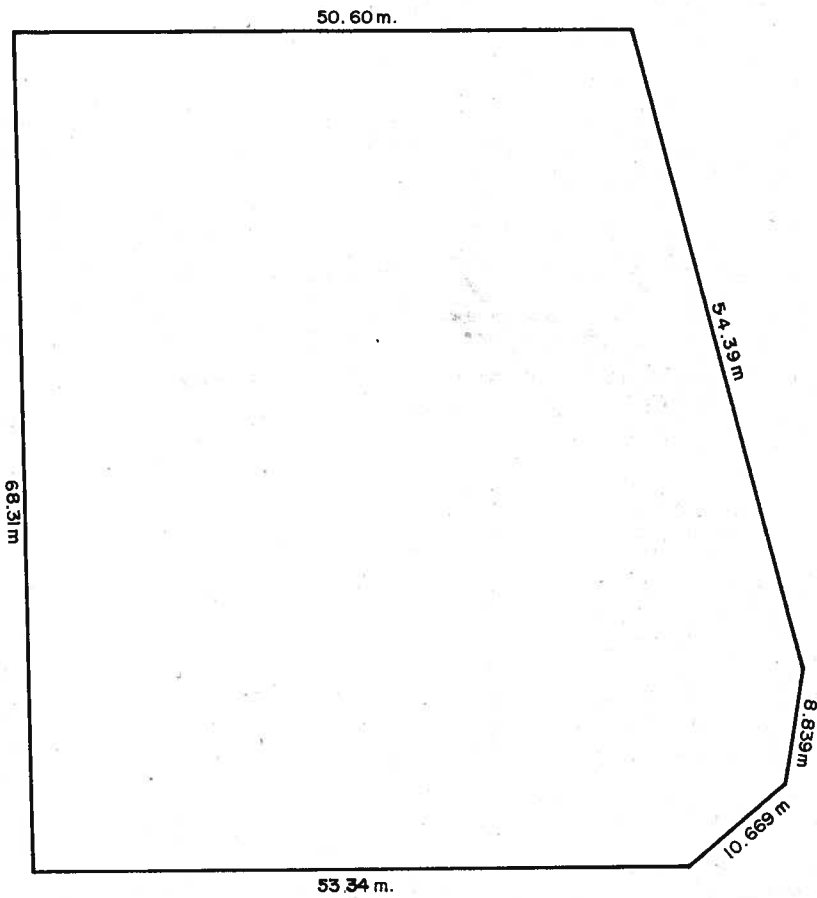
THIS IS SCHEDULE 'A' TO BY-LAW \_\_\_\_\_,  
 PASSED THIS \_\_\_\_\_ DAY OF \_\_\_\_\_, 198\_\_

\_\_\_\_\_  
 MAYOR

\_\_\_\_\_  
 CLERK

Map 26.1.58 Deleted

PART LOT 36 G.C.T.  
TOWNSHIP OF WOOLWICH



REGIONAL ROAD 17

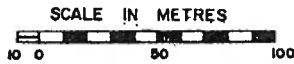
PARKSIDE DRIVE

THIS IS SCHEDULE " " TO BY-LAW \_\_\_\_\_  
PASSED THIS \_\_\_\_\_ DAY OF \_\_\_\_\_, 198 .

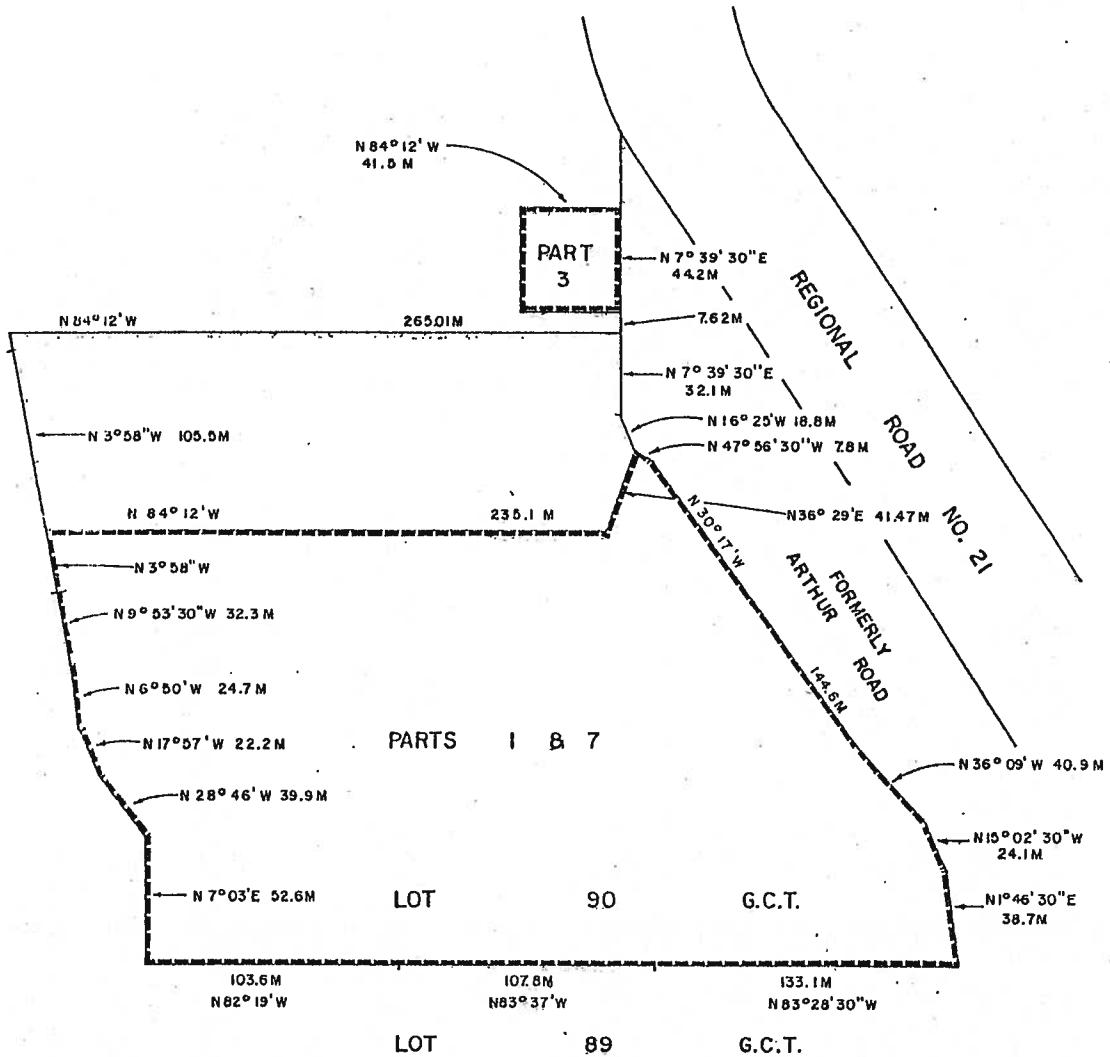
\_\_\_\_\_  
MAYOR

\_\_\_\_\_  
CLERK

PART OF LOT 90 G.C.T.  
 TOWNSHIP OF WOOLWICH  
 PARTS 1, 3 & 7 - PLAN 58R-1732



SUBJECT LANDS OUTLINED THUS



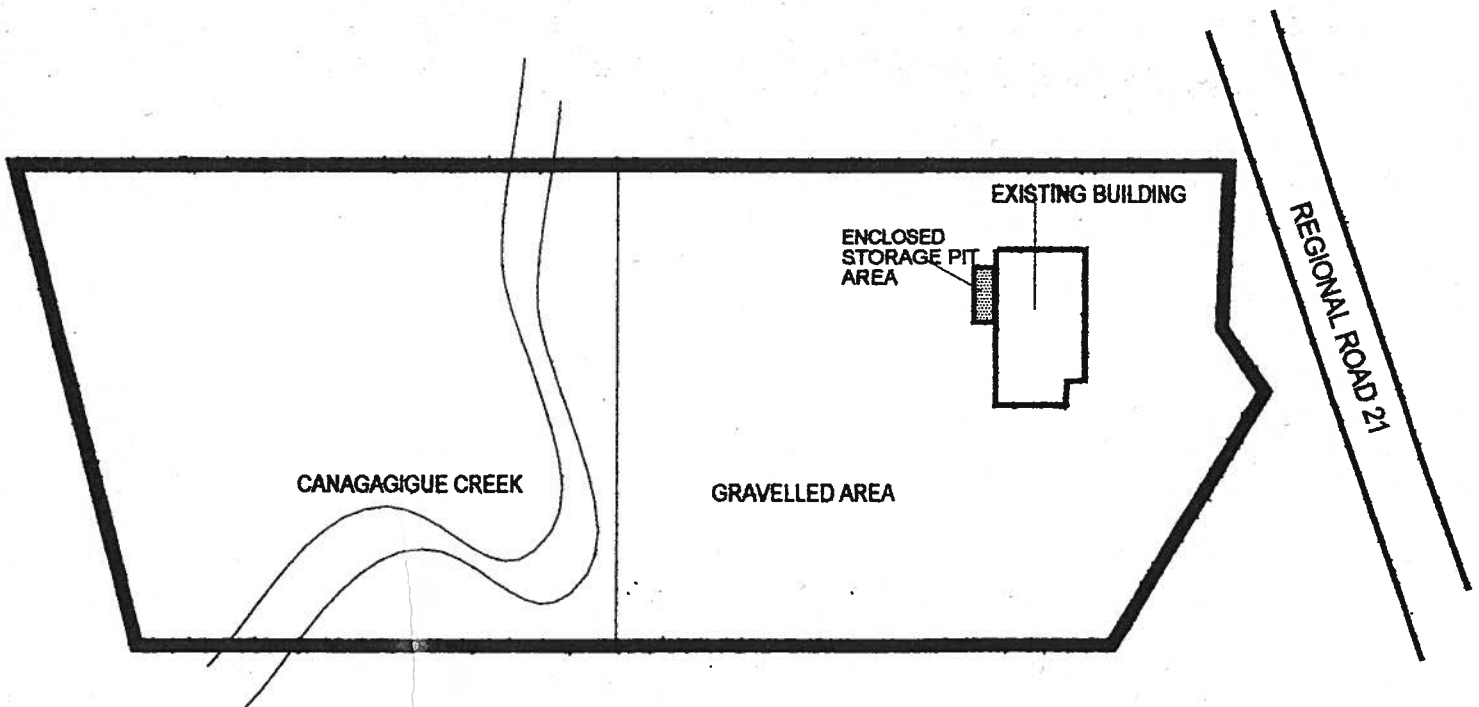
THIS IS SCHEDULE 'A' TO BY-LAW \_\_\_\_\_,  
 PASSED THIS \_\_\_\_\_ DAY OF \_\_\_\_\_, 198\_\_.

\_\_\_\_\_  
 MAYOR

\_\_\_\_\_  
 CLERK

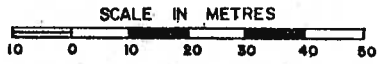
SCHEDULE "A"

PART LOT 90, G.C.T.  
(FORMER TOWNSHIP OF WOOLWICH, COUNTY  
OF WATERLOO)



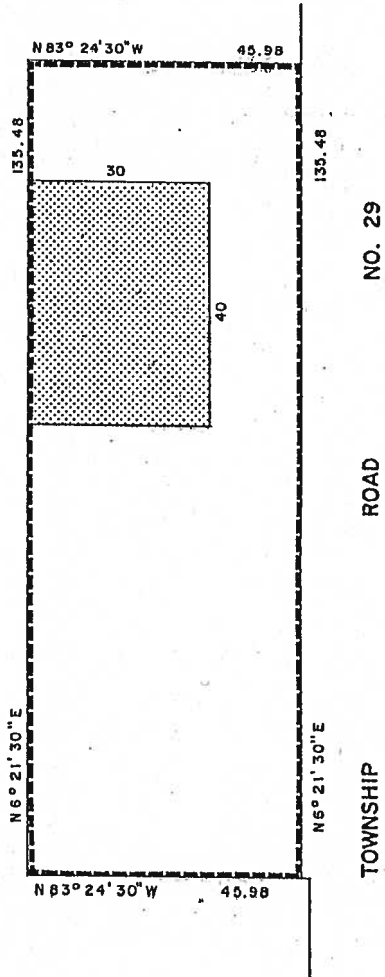
APPROXIMATE SCALE 1:1800

PART OF LOT 83 G.C.T.  
(PART I, PLAN 58 R-1669)  
TOWNSHIP OF WOOLWICH



SUBJECT LANDS OUTLINED THUS

AREA OF OPERATION SHOWN THUS

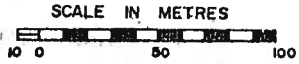




THIS IS SCHEDULE 'A' TO BY-LAW \_\_\_\_\_,  
PASSED THIS \_\_\_\_\_ DAY OF \_\_\_\_\_, 198...

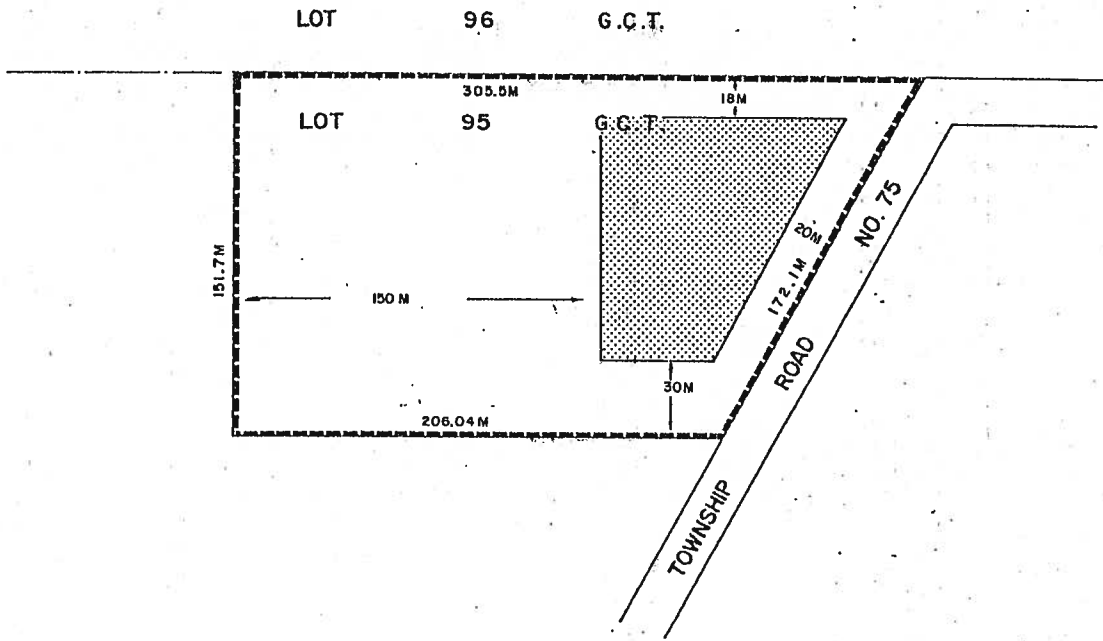
\_\_\_\_\_  
MAYOR

\_\_\_\_\_  
CLERK

PART OF LOT 95 G.C.T.  
TOWNSHIP OF WOOLWICH



SUBJECT LANDS OUTLINED THUS   
 AREA OF OPERATION SHOWN THUS 



THIS IS SCHEDULE 'A' TO BY-LAW \_\_\_\_\_,  
 PASSED THIS \_\_\_\_\_ DAY OF \_\_\_\_\_, 198\_\_.

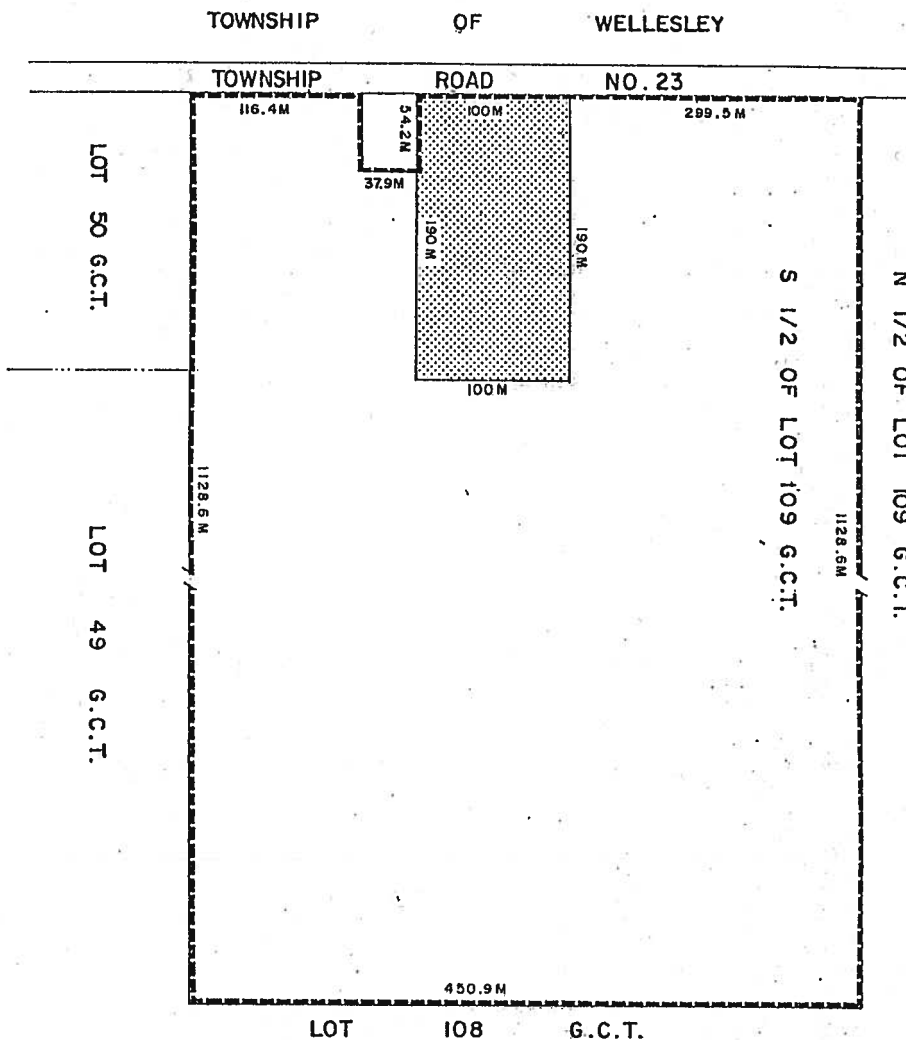
\_\_\_\_\_  
 MAYOR

\_\_\_\_\_  
 CLERK

PART OF LOT 109 G.C.T.  
TOWNSHIP OF WOOLWICH



SUBJECT LANDS OUTLINED THUS



AREA OF OPERATION SHOWN THUS

THIS IS SCHEDULE 'A' TO BY-LAW \_\_\_\_\_,  
PASSED THIS \_\_\_\_\_ DAY OF \_\_\_\_\_, 198\_\_.

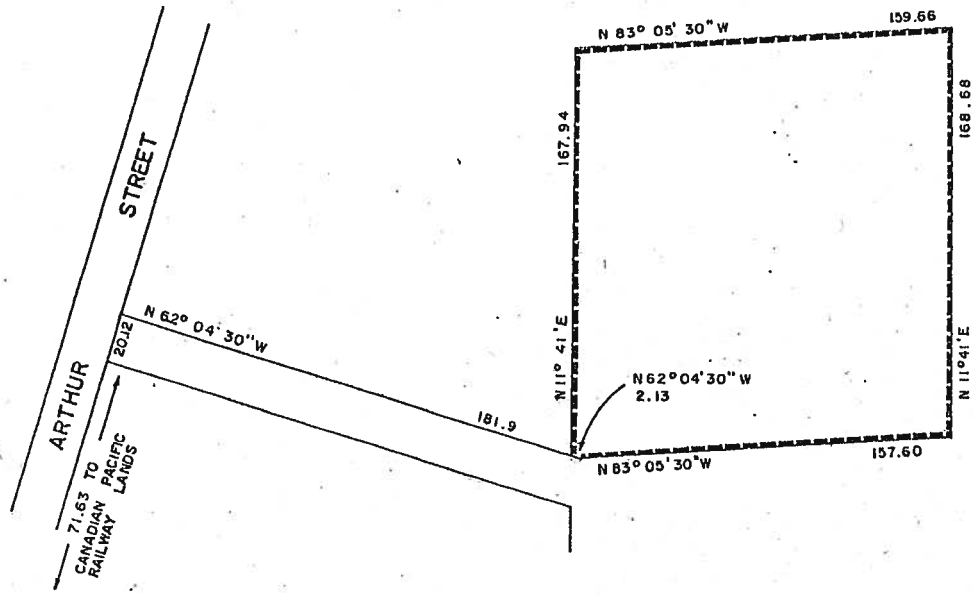
\_\_\_\_\_  
MAYOR

\_\_\_\_\_  
CLERK

PART I, PLAN 58R-690  
 TOWNSHIP OF WOOLWICH  
 (ELMIRA SETTLEMENT AREA)



SUBJECT LANDS OUTLINED THUS



THIS IS SCHEDULE 'A' TO BY-LAW \_\_\_\_\_,  
 PASSED THIS \_\_\_\_\_ DAY OF \_\_\_\_\_, 198 .

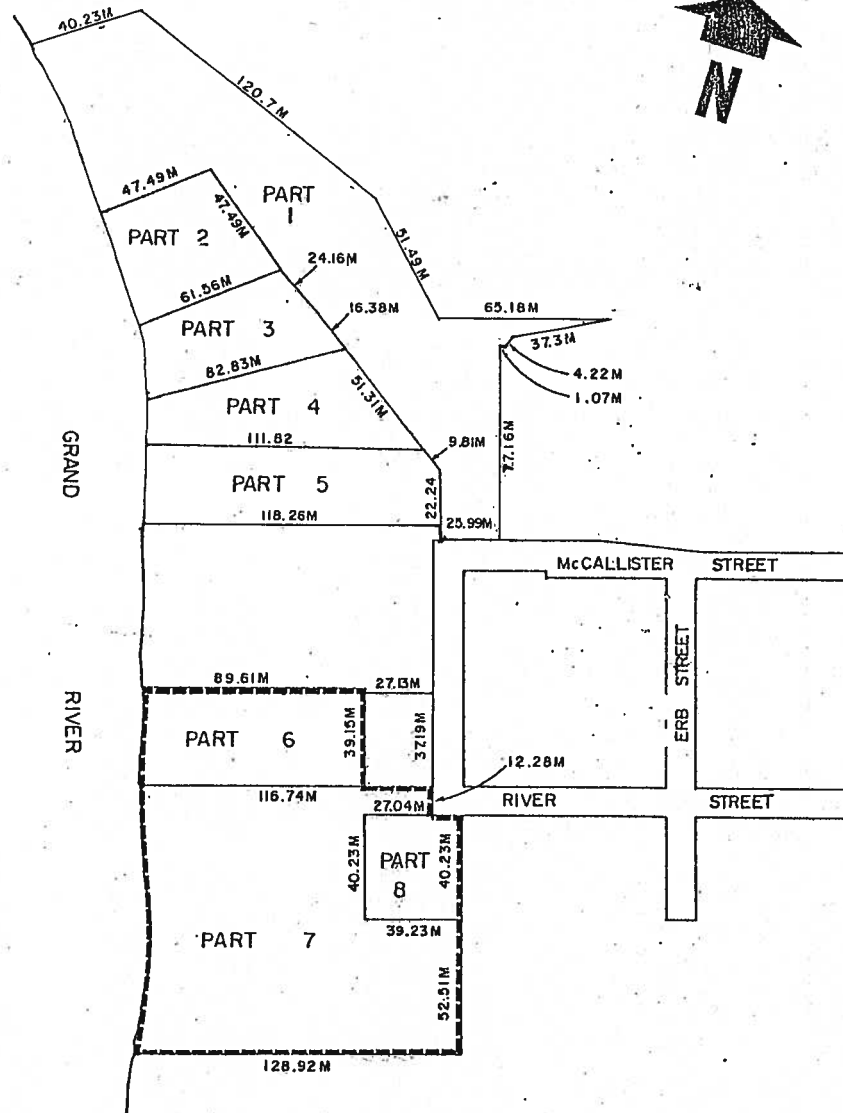
\_\_\_\_\_  
 MAYOR

\_\_\_\_\_  
 CLERK

SEE PART 2 -SCHEDULE 'B'

PART OF LOT 6 J.W.T.  
 TOWNSHIP OF WOOLWICH  
 (BLOOMINGDALE SETTLEMENT AREA)

SUBJECT LANDS OUTLINED THUS 



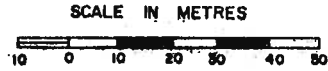
THIS IS SCHEDULE 'A' TO BY-LAW \_\_\_\_\_,  
 PASSED THIS \_\_\_\_\_ DAY OF \_\_\_\_\_, 1984.

\_\_\_\_\_  
 MAYOR

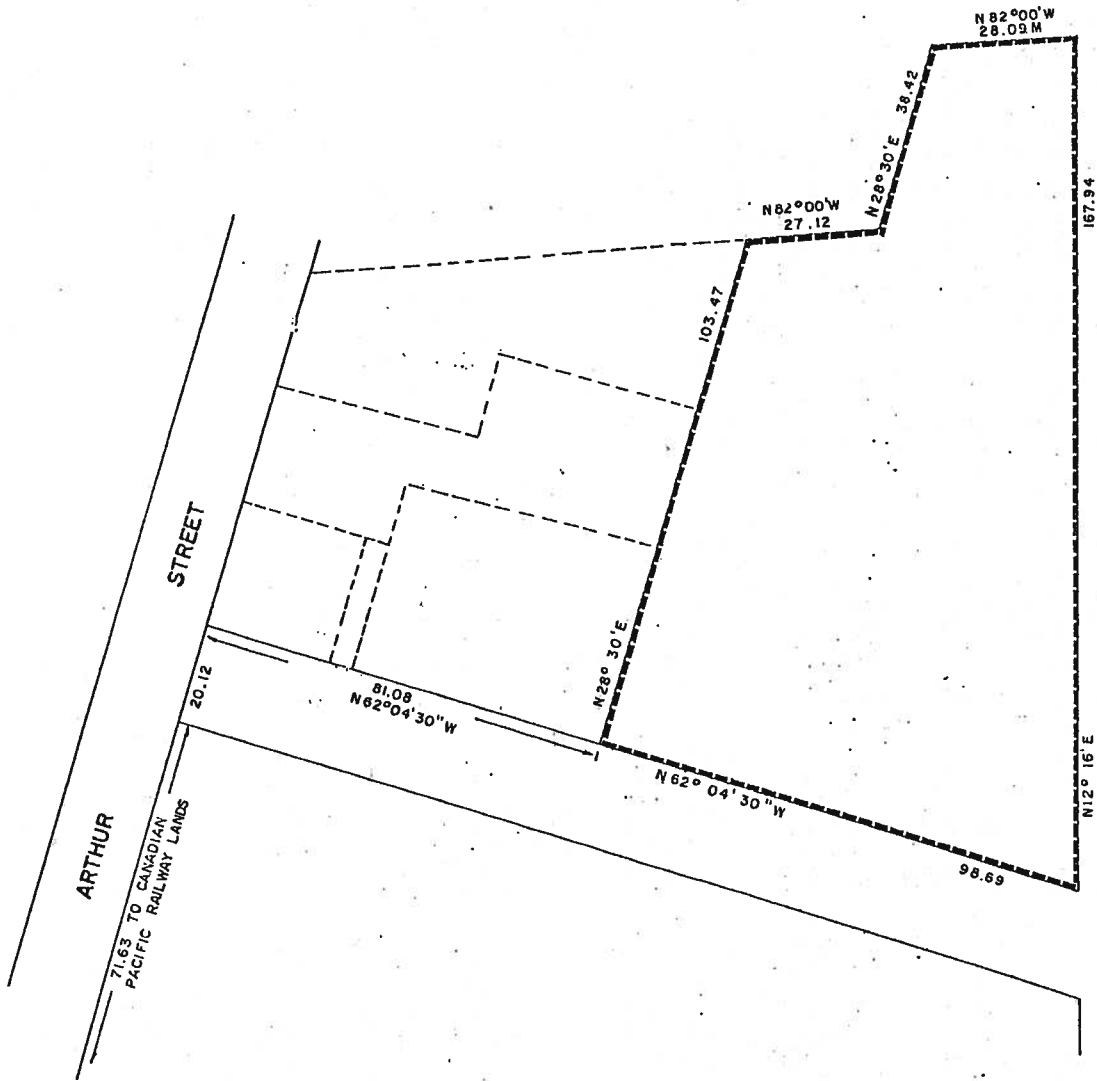
\_\_\_\_\_  
 CLERK

SEE PART 18-SCHEDULE 'B'

LOT 17, REG. PLAN NO. 1301  
 TOWNSHIP OF WOOLWICH  
 (ELMIRA SETTLEMENT AREA)



SUBJECT LANDS OUTLINED THUS



THIS IS SCHEDULE 'A' TO BY-LAW \_\_\_\_\_,  
 PASSED THIS \_\_\_\_\_ DAY OF \_\_\_\_\_, 198 .

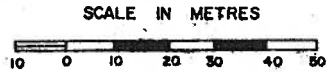
\_\_\_\_\_  
 MAYOR

\_\_\_\_\_  
 CLERK

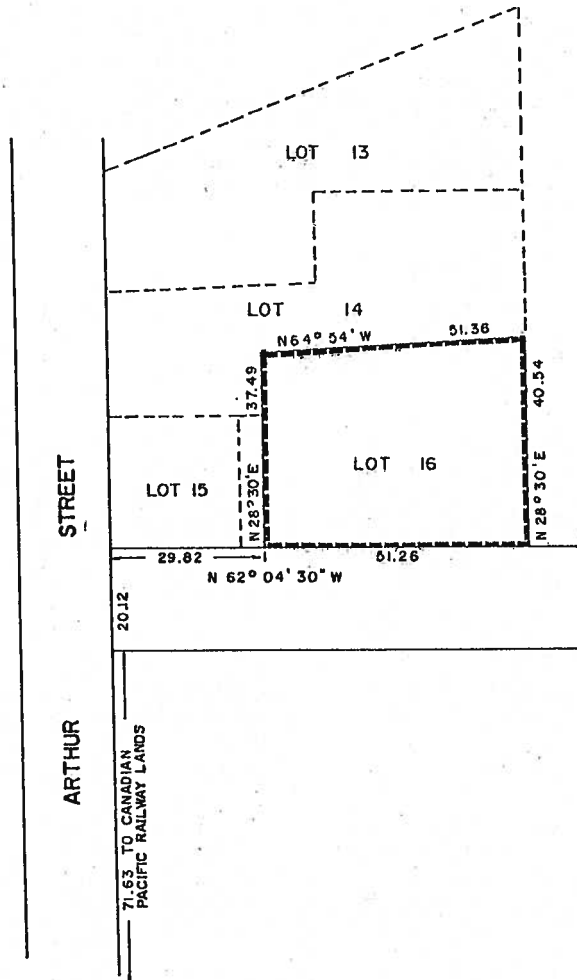
SEE PART 2 -SCHEDULE 'B'

SECTION 26.1.67

LOT 16, REG. PLAN NO. 1301  
 TOWNSHIP OF WOOLWICH  
 (ELMIRA SETTLEMENT AREA)



SUBJECT LANDS OUTLINED THUS



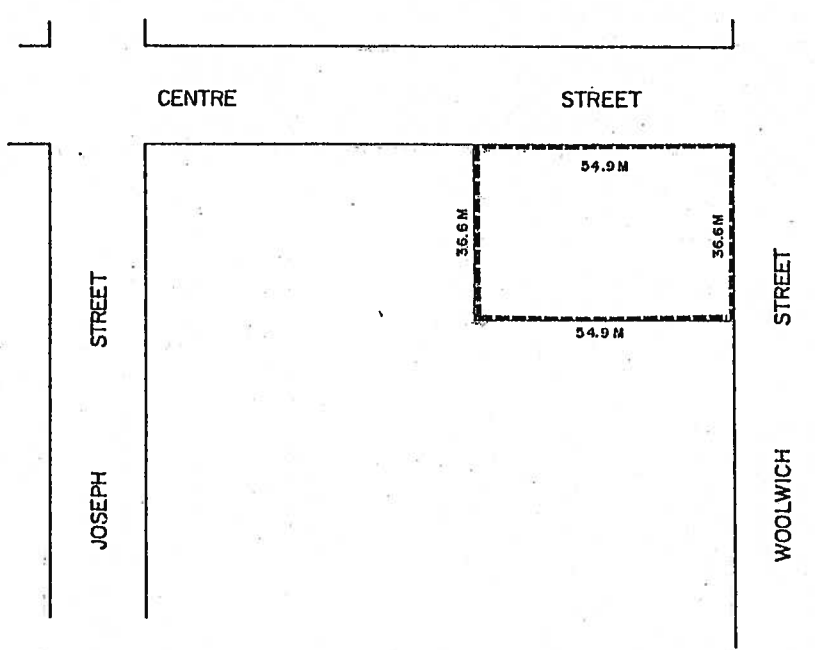
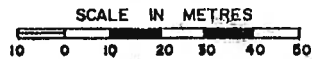
THIS IS SCHEDULE 'A' TO BY-LAW \_\_\_\_\_,  
 PASSED THIS \_\_\_\_\_ DAY OF \_\_\_\_\_, 198 \_\_\_\_\_.

\_\_\_\_\_  
 MAYOR

\_\_\_\_\_  
 CLERK

PART OF LOTS 10 & 11  
REGISTERED PLAN NO. 588  
TOWNSHIP OF WOOLWICH  
(BRESLAU SETTLEMENT AREA)

SUBJECT LANDS OUTLINED THUS -----



THIS IS SCHEDULE 'A' TO BY-LAW \_\_\_\_\_,  
PASSED THIS \_\_\_\_\_ DAY OF \_\_\_\_\_, 198\_\_.

\_\_\_\_\_  
MAYOR

\_\_\_\_\_  
CLERK

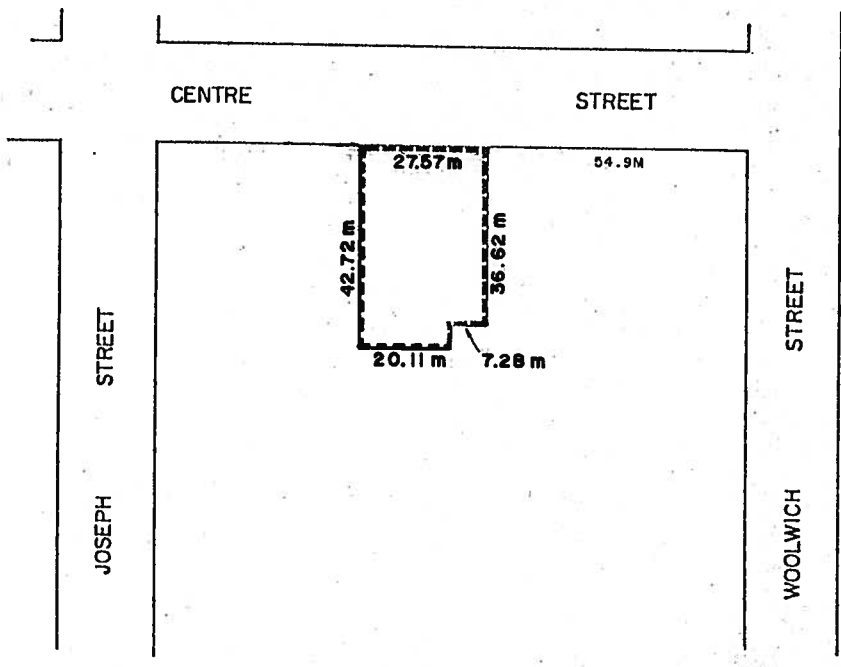
SEE PART 24-SCHEDULE 'B'

SECTION 26.1.69

PART OF LOTS 10, 11, 34, 35 & 37  
 REGISTERED PLAN NO. 588  
 TOWNSHIP OF WOOLWICH  
 (BRESLAU SETTLEMENT AREA)



SUBJECT LANDS OUTLINED THUS -----



THIS IS SCHEDULE 'A' TO BY-LAW \_\_\_\_\_  
 PASSED THIS \_\_\_\_\_ DAY OF \_\_\_\_\_, 199\_\_



\_\_\_\_\_  
 MAYOR

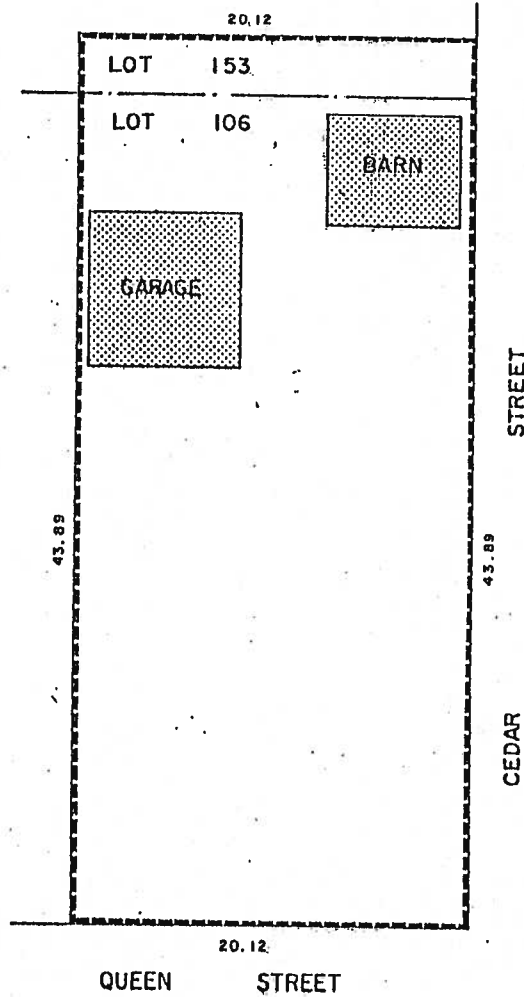
\_\_\_\_\_  
 CLERK

LOT 106 & PART OF LOT 153  
REGISTERED PLAN NO. 19  
TOWNSHIP OF WOOLWICH  
(ST. JACOBS SETTLEMENT AREA)

SCALE IN METRES



SUBJECT LANDS OUTLINED THUS   
AREAS OF OPERATION SHOWN THUS 



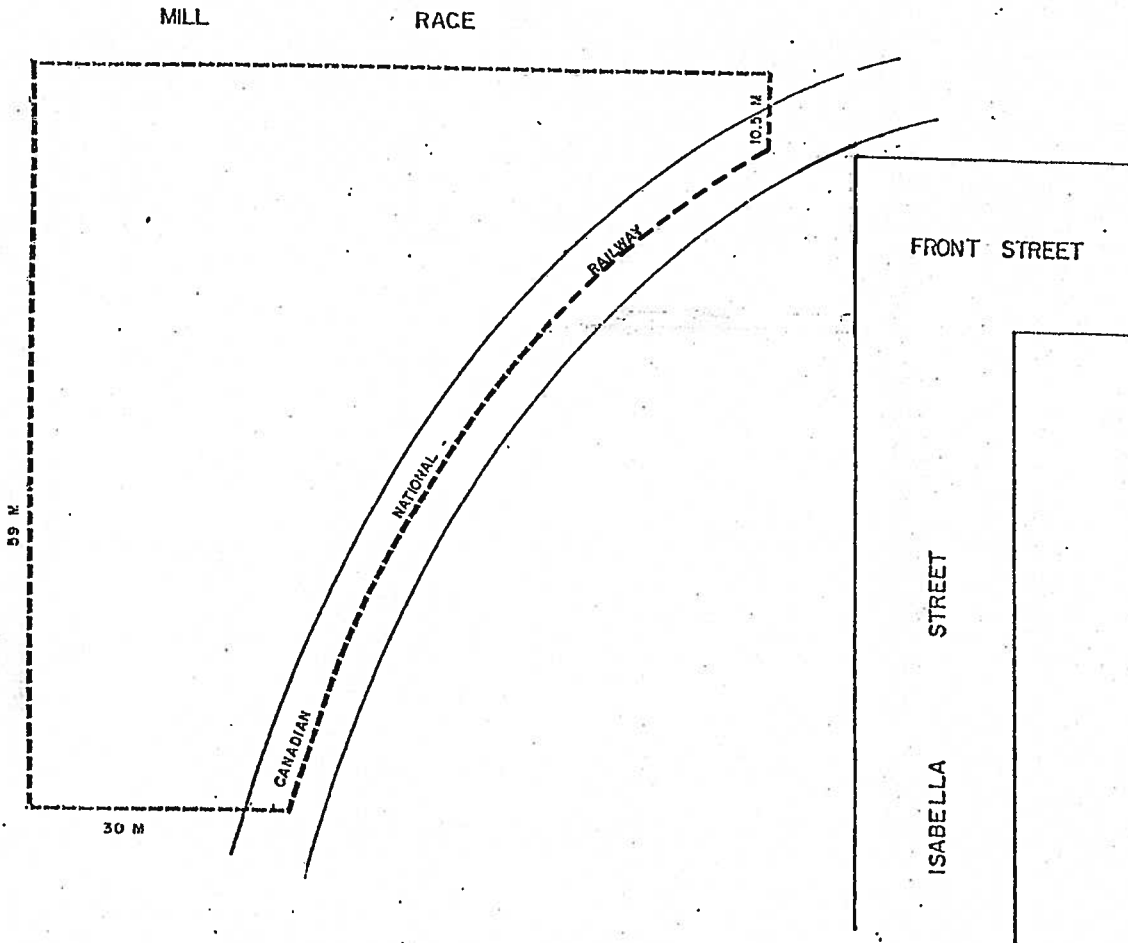
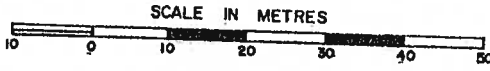
THIS IS SCHEDULE 'A' TO BY-LAW \_\_\_\_\_,  
PASSED THIS \_\_\_\_\_ DAY OF \_\_\_\_\_, 1988.

\_\_\_\_\_  
MAYOR

\_\_\_\_\_  
CLERK

Map 26.1.72 Deleted

PART OF LOT 8 G.C.T.  
PART OF LOT 18, REG. PLAN NO. 19  
TOWNSHIP OF WOOLWICH  
(ST. JACOBS)



SUBJECT LANDS OUTLINED, THUS \_\_\_\_\_

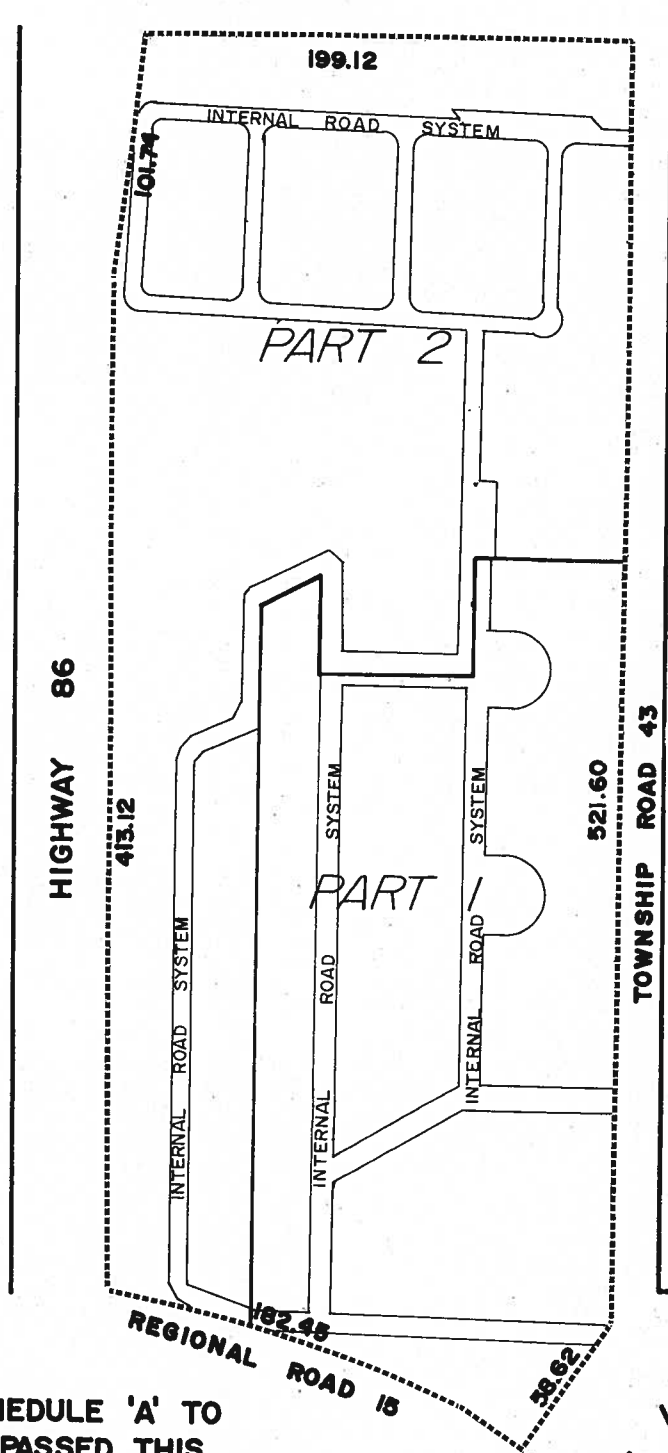
THIS IS SCHEDULE 'A' TO BY-LAW \_\_\_\_\_,  
PASSED THIS \_\_\_\_\_ DAY OF \_\_\_\_\_, 198..

\_\_\_\_\_  
MAYOR

\_\_\_\_\_  
CLERK

# PART OF LOTS 5 & 6, G.C.T. TOWNSHIP OF WOOLWICH

SCALE IN METERS



**SUBJECT PROPERTY  
OUTLINED THUS**



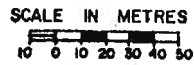
NOTE:  
THE INTERNAL ROAD  
SYSTEM IS NOT A  
PUBLIC ROAD SYSTEM

THIS IS SCHEDULE 'A' TO  
BY-LAW \_\_\_\_\_ PASSED THIS \_\_\_\_\_  
DAY OF \_\_\_\_\_, 19\_\_\_\_.

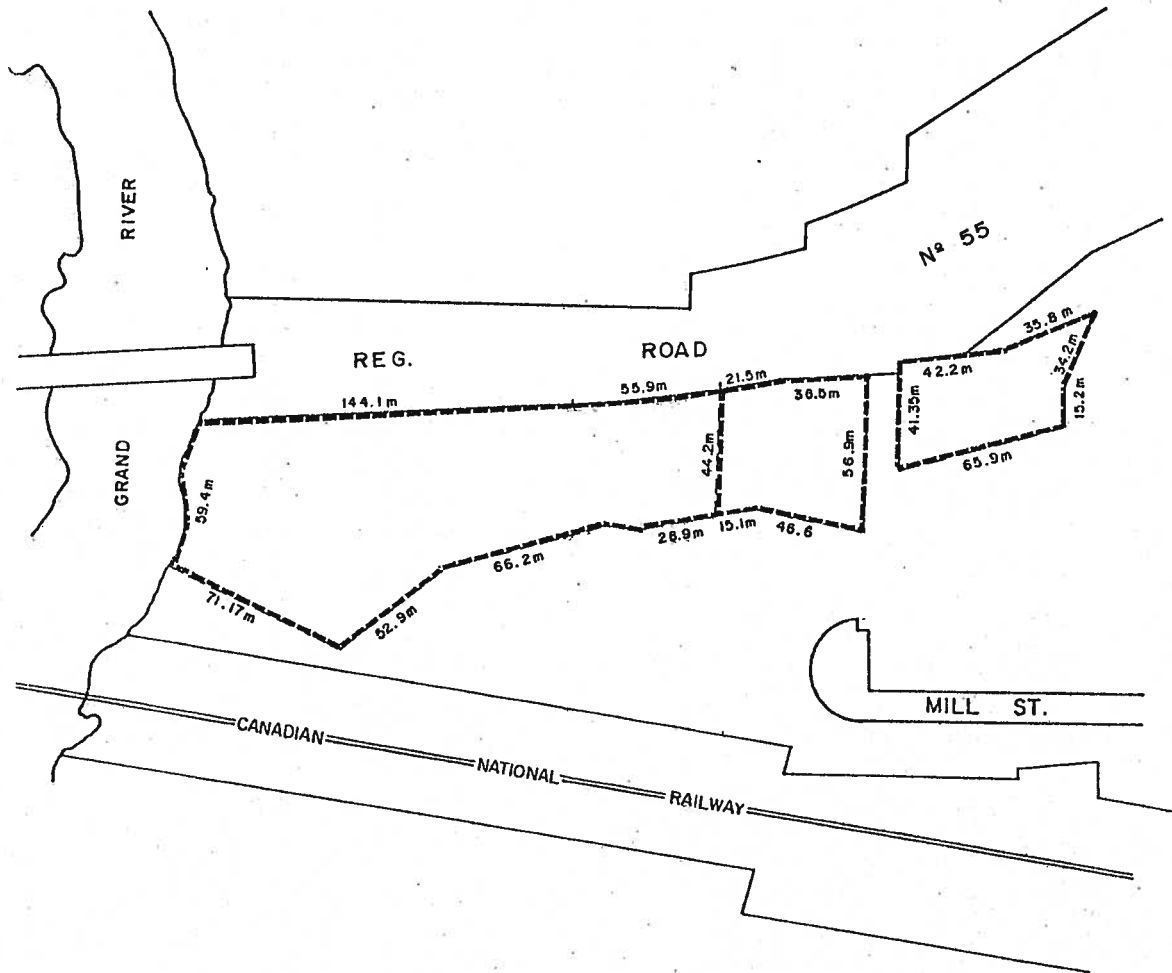
\_\_\_\_\_  
MAYOR

\_\_\_\_\_  
CLERK

PART OF LOT 114 G.C.T.  
 TOWNSHIP OF WOOLWICH  
 (BRESLAU SETTLEMENT AREA)



SUBJECT LANDS OUTLINED THUS \_\_\_\_\_

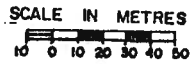


THIS IS SCHEDULE 'A' TO BY-LAW \_\_\_\_\_,  
 PASSED THIS \_\_\_\_\_ DAY OF \_\_\_\_\_, 198.

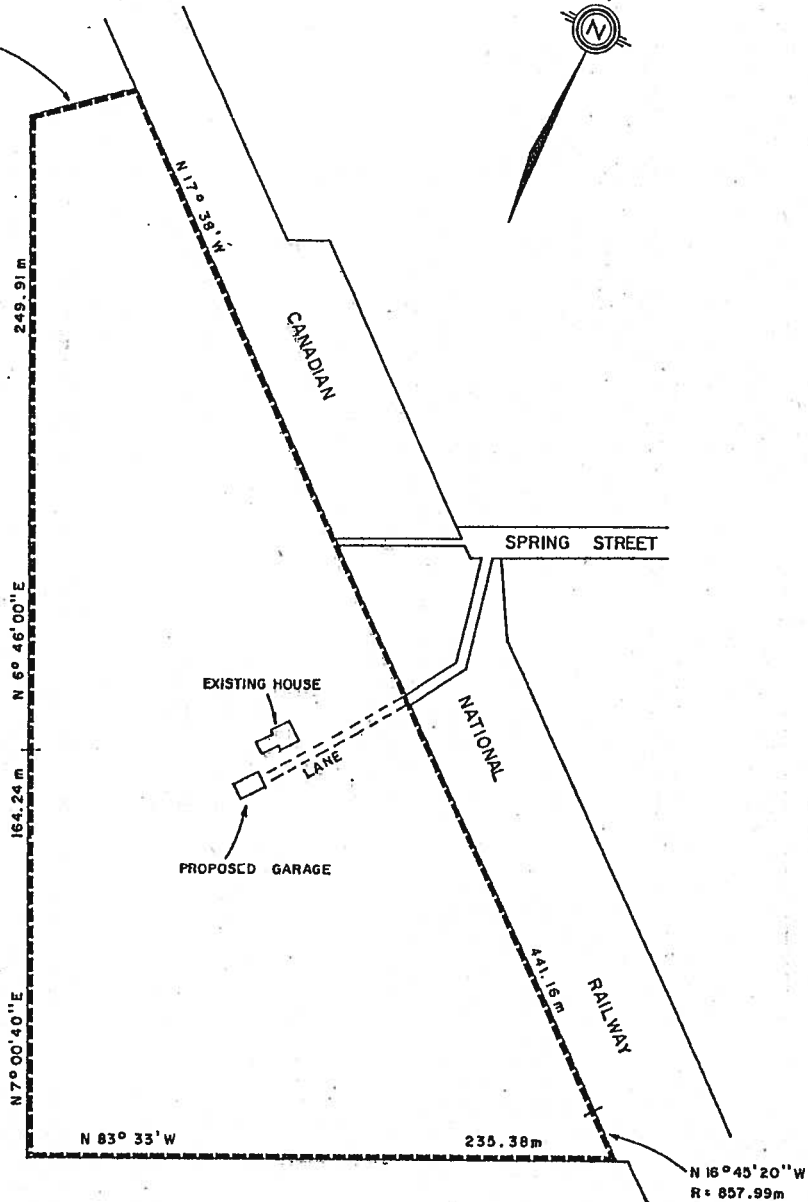
\_\_\_\_\_  
 MAYOR

\_\_\_\_\_  
 CLERK

PART OF LOT 8 G.C.T.  
TOWNSHIP OF WOOLWICH  
(ST. JACOBS)



N 82° 04' 20" E  
44.11 m



SUBJECT LANDS OUTLINED THUS \_\_\_\_\_

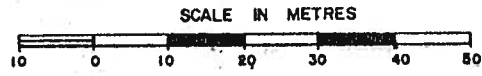
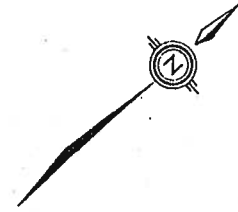
THIS IS SCHEDULE 'A' TO BY-LAW \_\_\_\_\_,

PASSED THIS \_\_\_\_\_ DAY OF \_\_\_\_\_, 198\_\_.

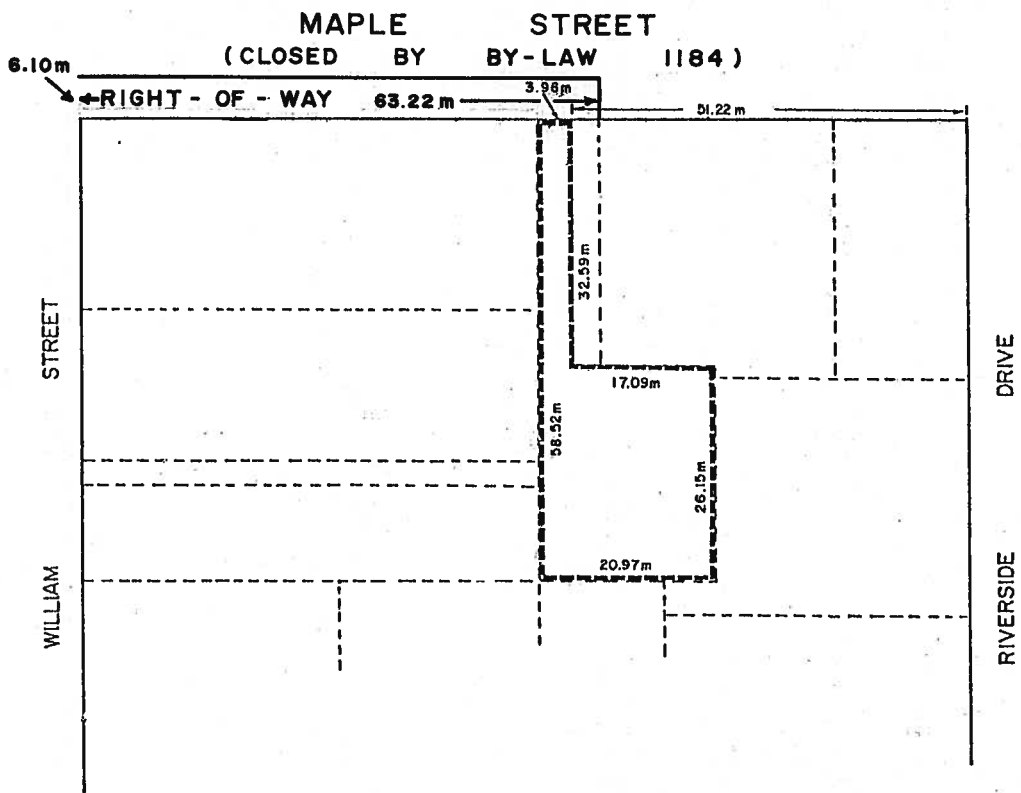
\_\_\_\_\_  
MAYOR

\_\_\_\_\_  
CLERK

PART OF LOTS 93,94,95 & 96  
 PLAN NO. 98  
 TOWNSHIP OF WOOLWICH  
 (ELMIRA)



SUBJECT LANDS OUTLINED THUS \_\_\_\_\_

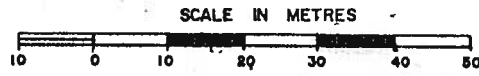
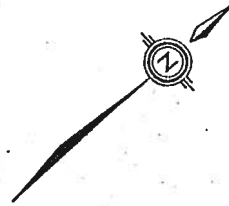


THIS IS SCHEDULE 'A' TO BY-LAW \_\_\_\_\_,  
 PASSED THIS \_\_\_\_\_ DAY OF \_\_\_\_\_, 198\_\_.

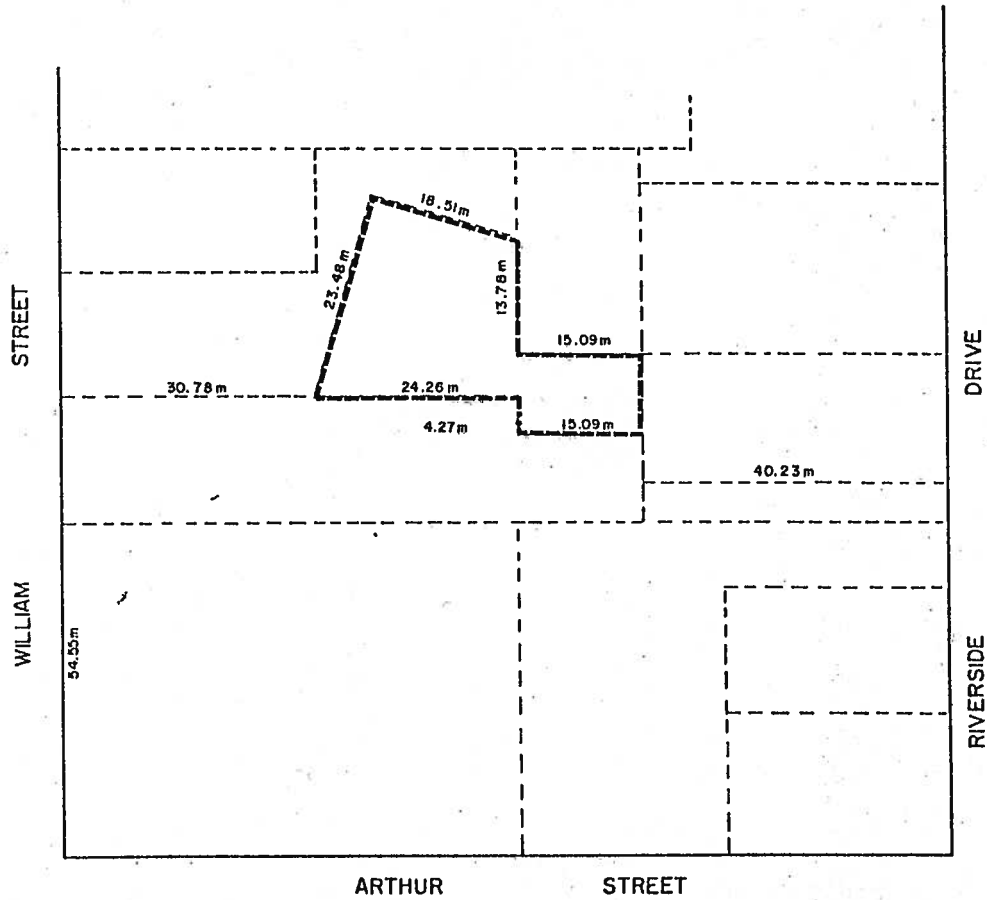
\_\_\_\_\_  
 MAYOR

\_\_\_\_\_  
 CLERK

PART OF LOT 96  
 PLAN NO. 98  
 TOWNSHIP OF WOOLWICH  
 (ELMIRA)



SUBJECT LANDS OUTLINED THUS -----



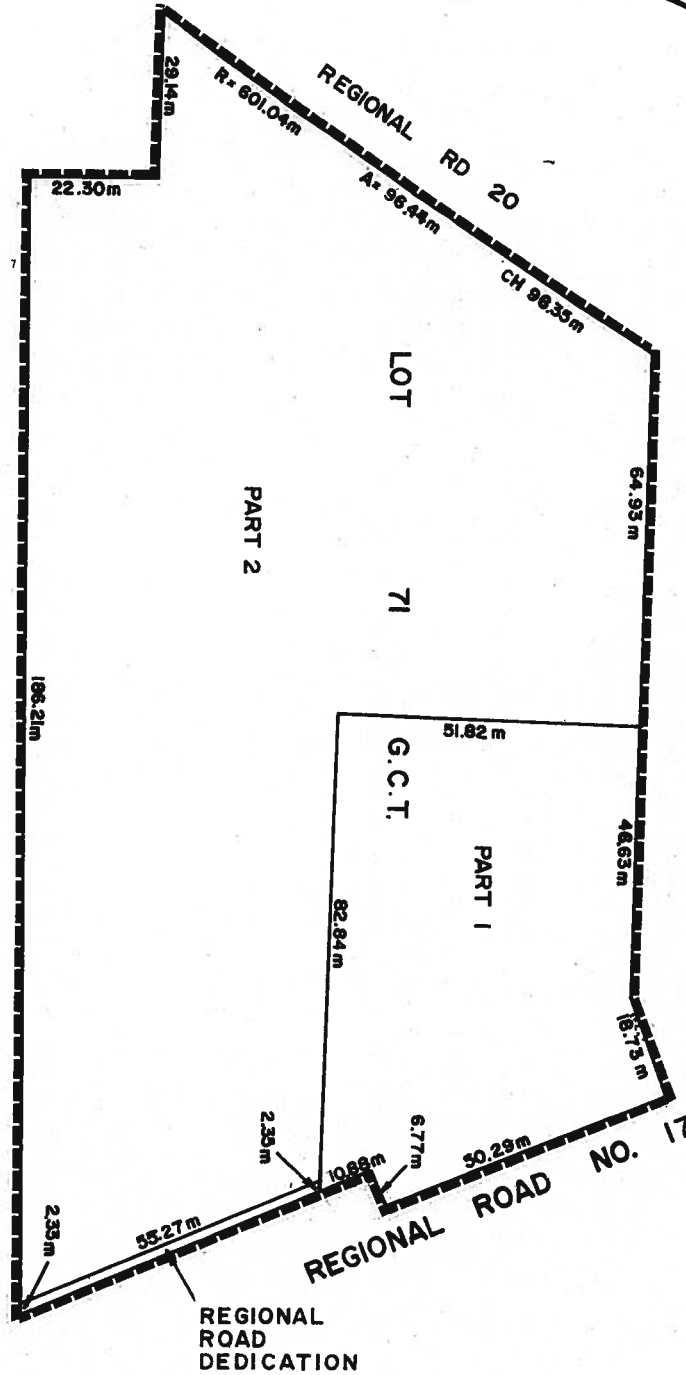
THIS IS SCHEDULE 'A' TO BY-LAW \_\_\_\_\_,  
 PASSED THIS \_\_\_\_\_ DAY OF \_\_\_\_\_, 1984.

\_\_\_\_\_  
 \_\_\_\_\_

PART OF LOT 71 G.C.T  
TOWNSHIP OF WOOLWICH



SUBJECT LANDS OUTLINED THUS



THIS IS SCHEDULE 'A' TO BY-LAW \_\_\_\_\_,  
PASSED THIS \_\_\_\_\_ DAY OF \_\_\_\_\_, 198 .

\_\_\_\_\_  
MAYOR

\_\_\_\_\_  
CLERK

SCHEDULE 'A'

Existing Home Hardware Operation

HENRY ST

PART A  
Industrial M-1(H) Zone  
(4.4 ha.)

246 METRES

PART B  
Open Space (O-2) Zone  
Woodlot (2.7 ha.)

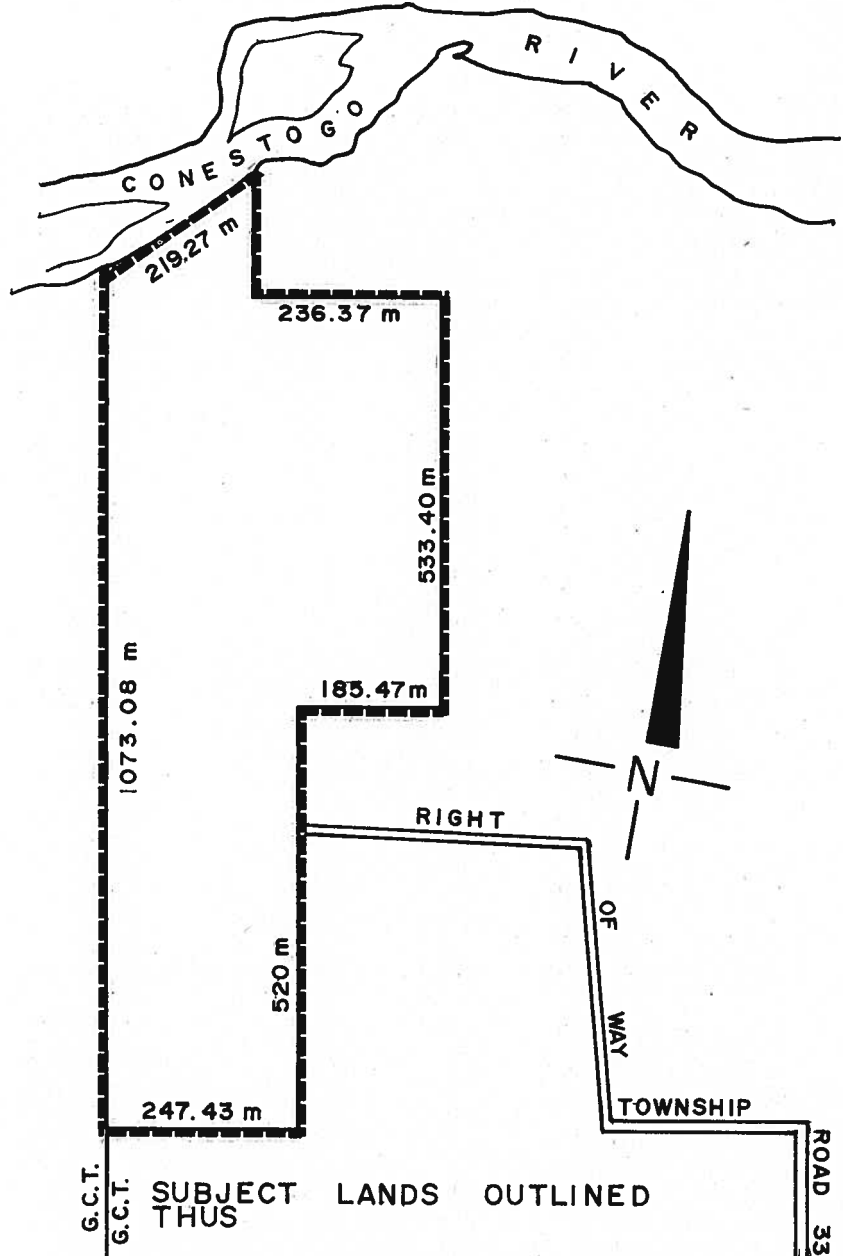
 Subject Property

Scale (metres)  
0 50 100



**SCHEDULE 26.1.81 – DELETED**  
**By-law 83-2006 passed November 28, 2006 (General Amendment)**

PART OF LOT II G.C.T.  
TOWNSHIP OF WOOLWICH



LOT 12 G.C.T.  
LOT 11 G.C.T.

SUBJECT LANDS OUTLINED  
THUS

THIS IS SCHEDULE 'A' TO BY-LAW \_\_\_\_\_,  
PASSED THIS \_\_\_\_\_ DAY OF \_\_\_\_\_, 198 .

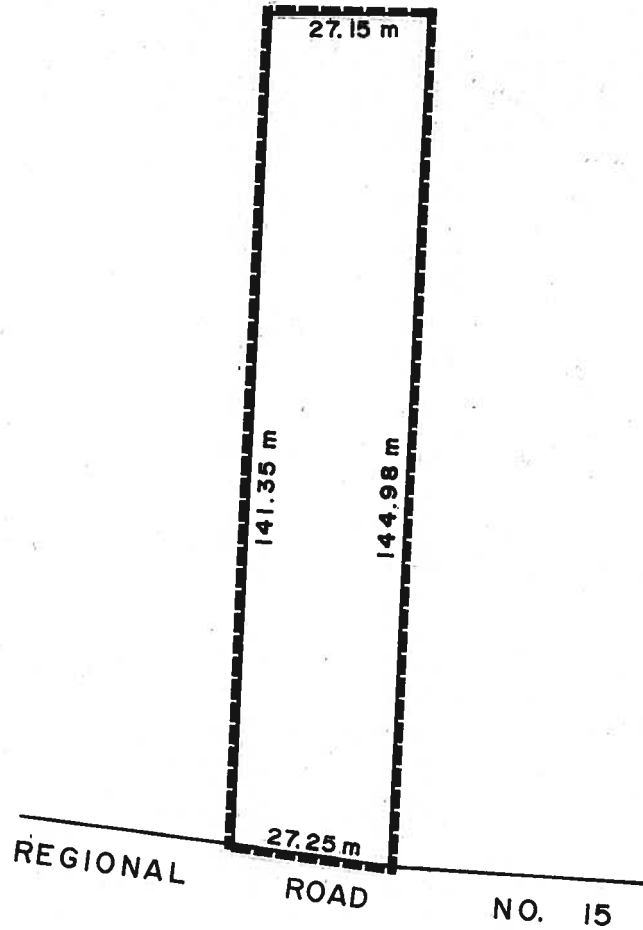
\_\_\_\_\_  
MAYOR

\_\_\_\_\_  
CLERK

Map 26.1.83 Deleted

Map 26.1.84 Deleted

PART OF LOT 18 G.C.T.  
PART 2 REGISTERED PLAN 58R-3268  
TOWNSHIP OF WOOLWICH



SUBJECT LANDS OUTLINED THUS 

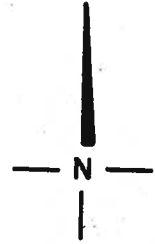
THIS IS SCHEDULE 'A' TO BY-LAW \_\_\_\_\_,  
PASSED THIS \_\_\_\_\_ DAY OF \_\_\_\_\_, 198 .

\_\_\_\_\_  
MAYOR

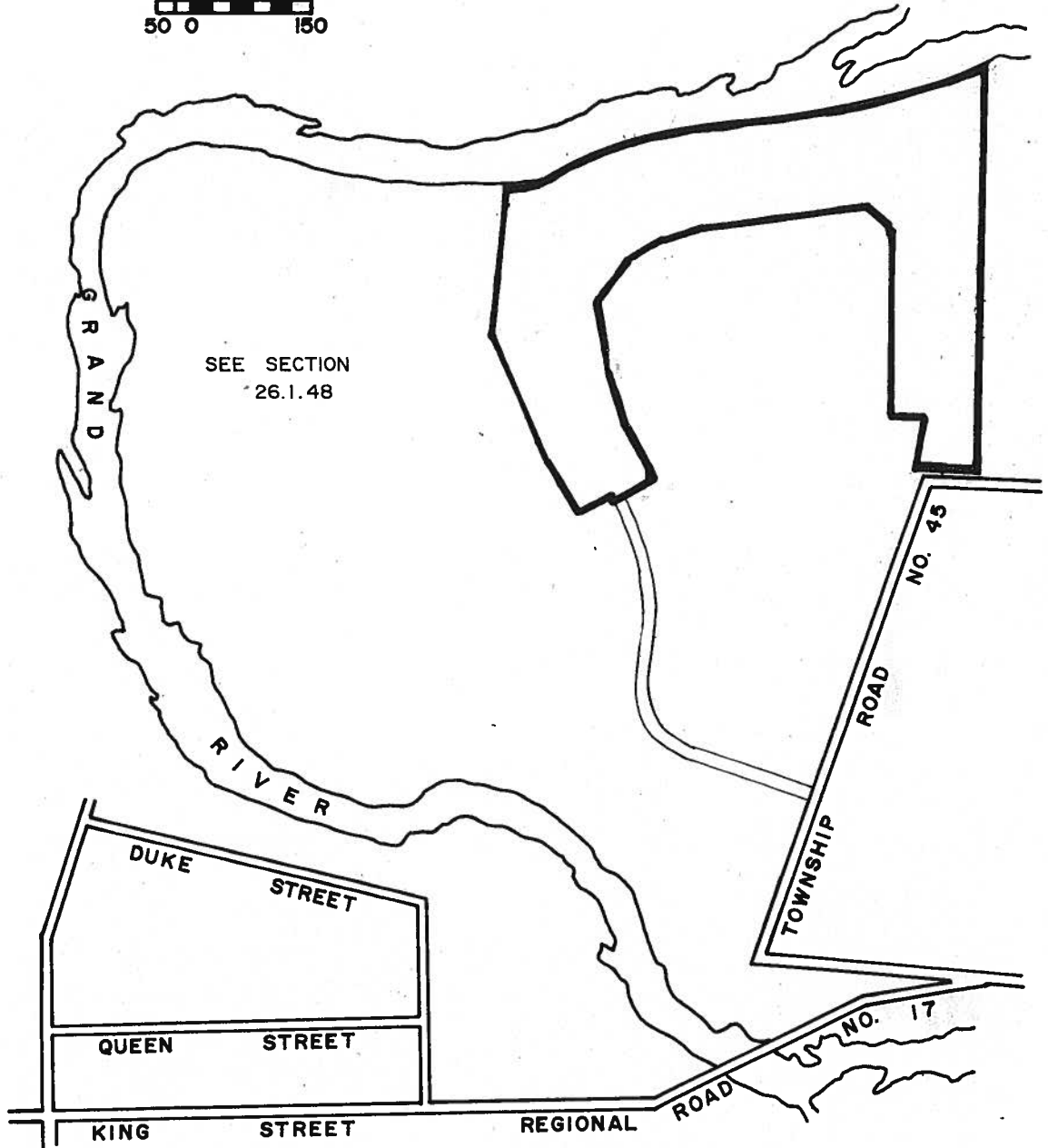
\_\_\_\_\_  
CLERK

PART OF CHALMERS LOT 8  
PART OF LOT 41 G.C.T.  
TOWNSHIP OF WOOLWICH

SUBJECT LANDS OUTLINED THUS \_\_\_\_\_



SCALE IN METERS  
50 0 150



THIS IS SCHEDULE 'A' TO BY-LAW \_\_\_\_\_,  
PASSED THIS \_\_\_\_\_ DAY OF \_\_\_\_\_, 198 .

\_\_\_\_\_  
MAYOR

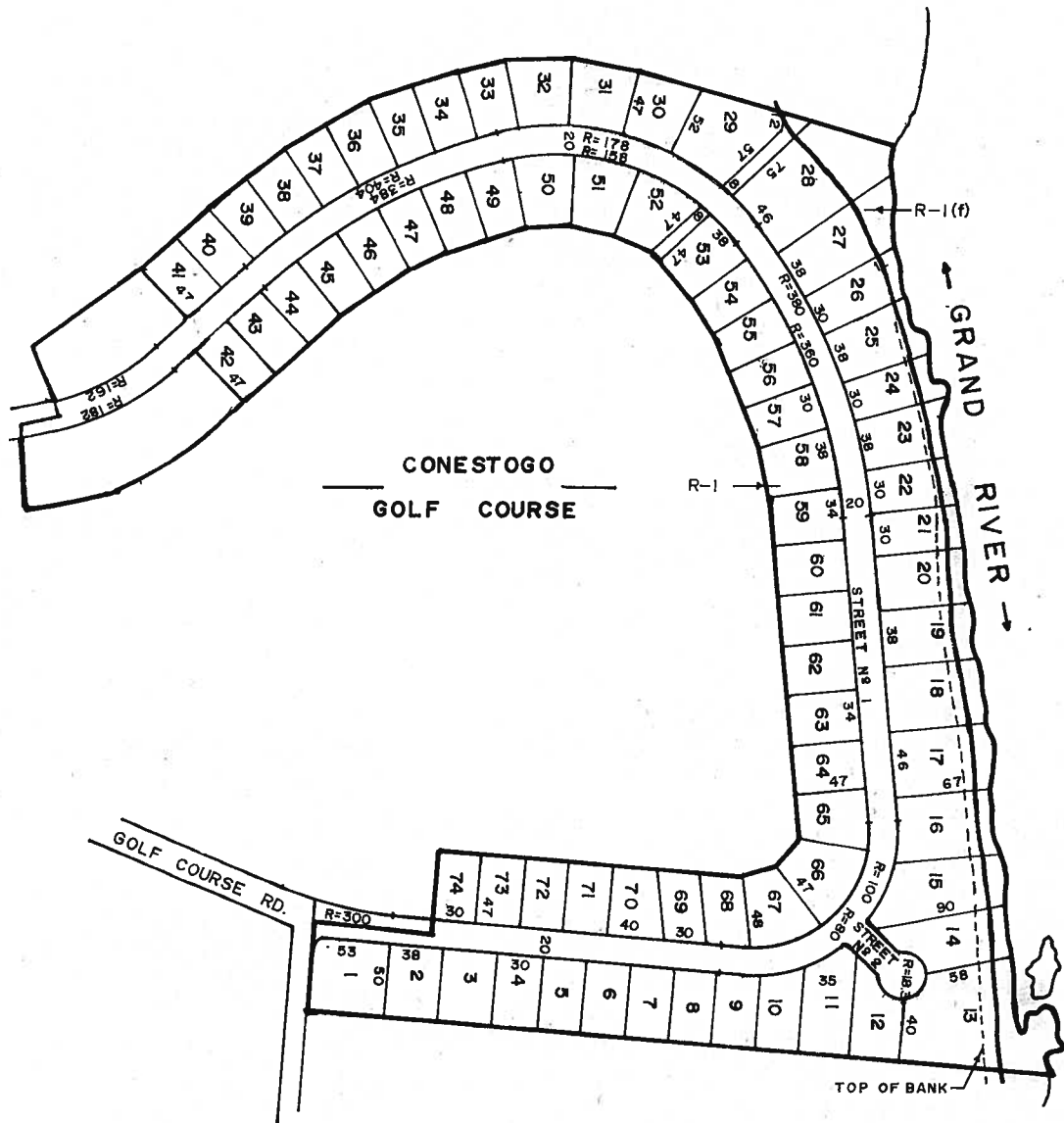
\_\_\_\_\_  
CLERK

SECTION 26.1.86  
SEE PART 15.1 SCHEDULE 'B'

PART OF CHALMERS LOT 8  
TOWNSHIP OF WOOLWICH

SUBJECT LANDS OUTLINED THUS 

METRIC SCALE - 1:4000



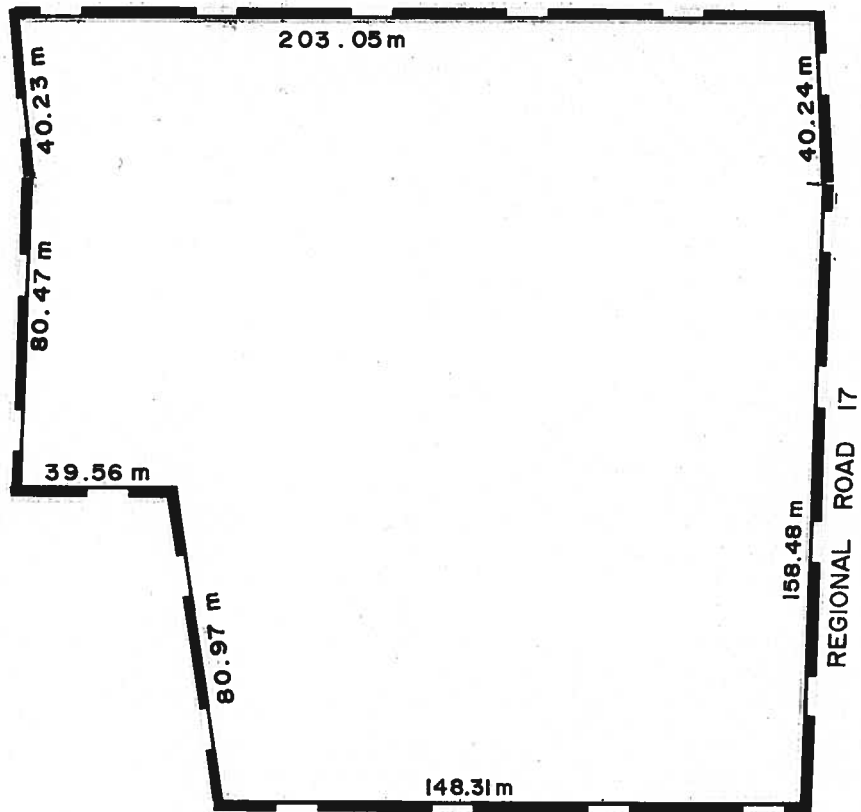
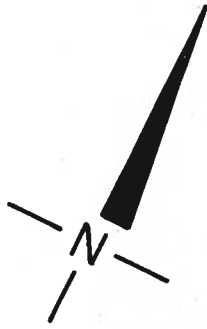
THIS IS SCHEDULE 'A' TO BY-LAW \_\_\_\_\_,  
PASSED THIS \_\_\_\_\_ DAY OF \_\_\_\_\_, 1990.

\_\_\_\_\_  
MAYOR

\_\_\_\_\_  
CLERK

SECTION 26.1.86  
SEE PART 15.1 SCHEDULE 'B'

PART OF LOTS 115 & 116 G.C.T.  
TOWNSHIP OF WOOLWICH



SUBJECT LANDS OUTLINED THUS 

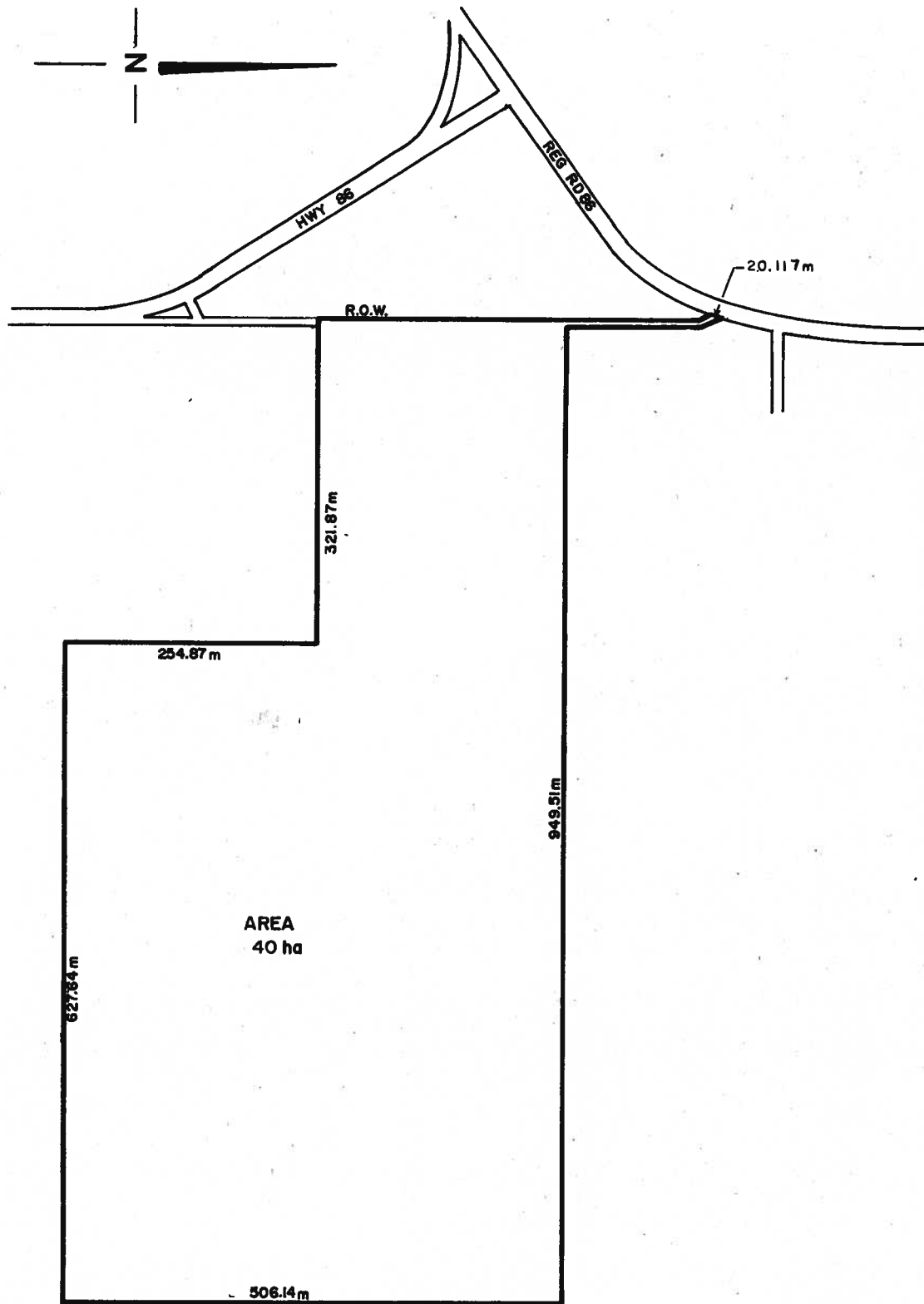
THIS IS SCHEDULE 'A' TO BY-LAW \_\_\_\_\_,  
PASSED THIS \_\_\_\_\_ DAY OF \_\_\_\_\_, 198

\_\_\_\_\_  
MAYOR

\_\_\_\_\_  
CLERK

SEE PARTS 25 & 26 SCHEDULE 'B' SECTION 26.1.87

PART OF LOT III G.C.T.  
TOWNSHIP OF WOOLWICH



SUBJECT LANDS OUTLINED THUS 

THIS IS SCHEDULE 'A' TO BYLAW  
PASSED THIS \_\_\_\_\_ DAY OF \_\_\_\_\_ 198

\_\_\_\_\_  
MAYOR

\_\_\_\_\_  
CLERK

SCALE: 0 25 50 100 150 200 M

SECTION 26.1.88

PART OF LOT 6 J.W.T.  
TOWNSHIP OF WOOLWICH

REGIONAL RD 26

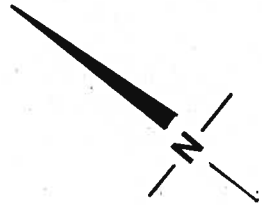
REGIONAL RD 17

R. O. W.

571.09m

4.02m

2.41m




3.62 m


60.35m

38.85m

GRAND RIVER

83.39m

SUBJECT LANDS OUTLINED THUS   
THIS IS SCHEDULE 'A' TO BYLAW \_\_\_\_\_  
PASSED THIS \_\_\_\_\_ DAY OF \_\_\_\_\_ 198 .

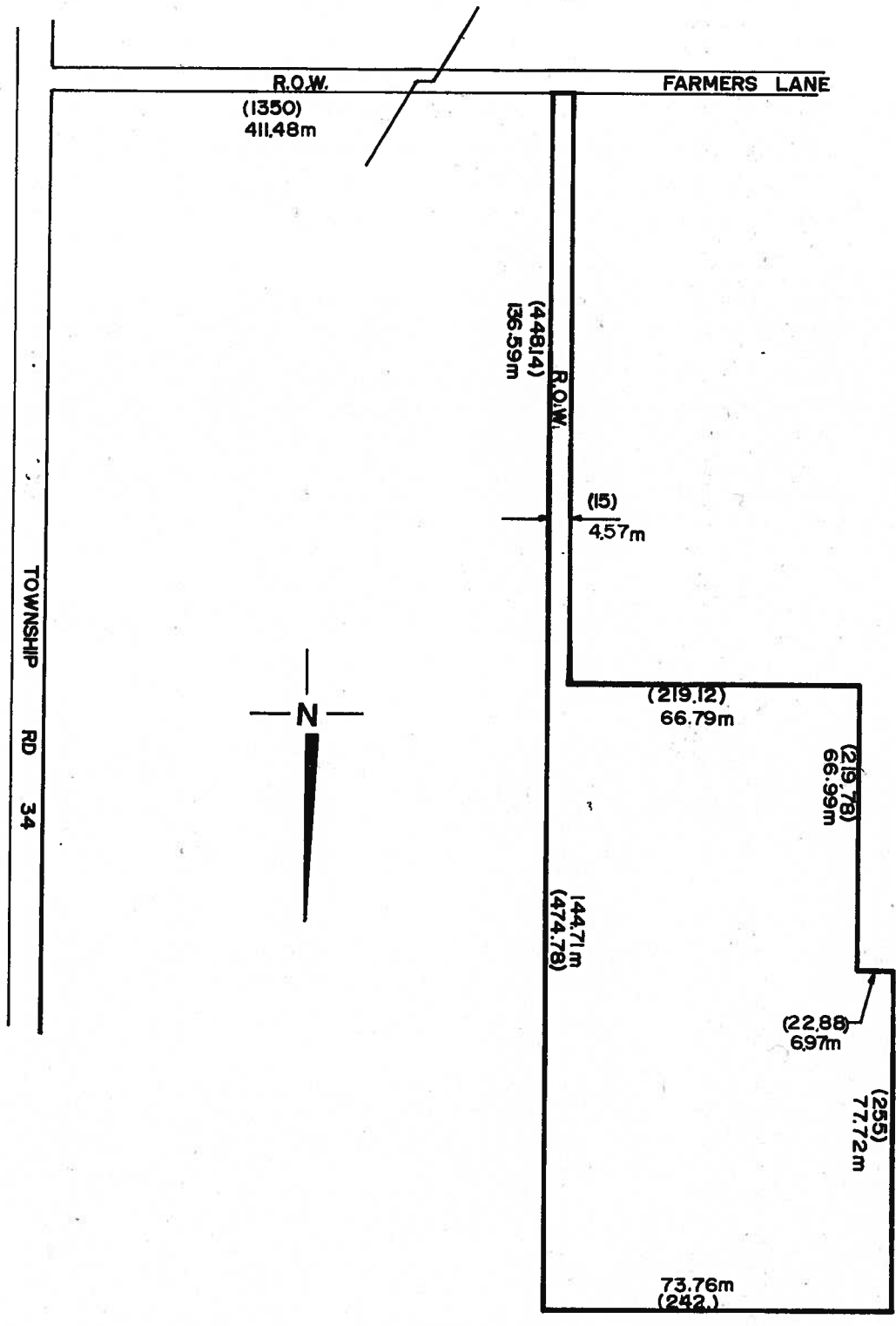
SCALE:  M  
0 25 50

\_\_\_\_\_  
MAYOR

\_\_\_\_\_  
CLERK

SECTION 26.1.89

PART OF LOT 15 G.C.T.  
TOWNSHIP OF WOOLWICH



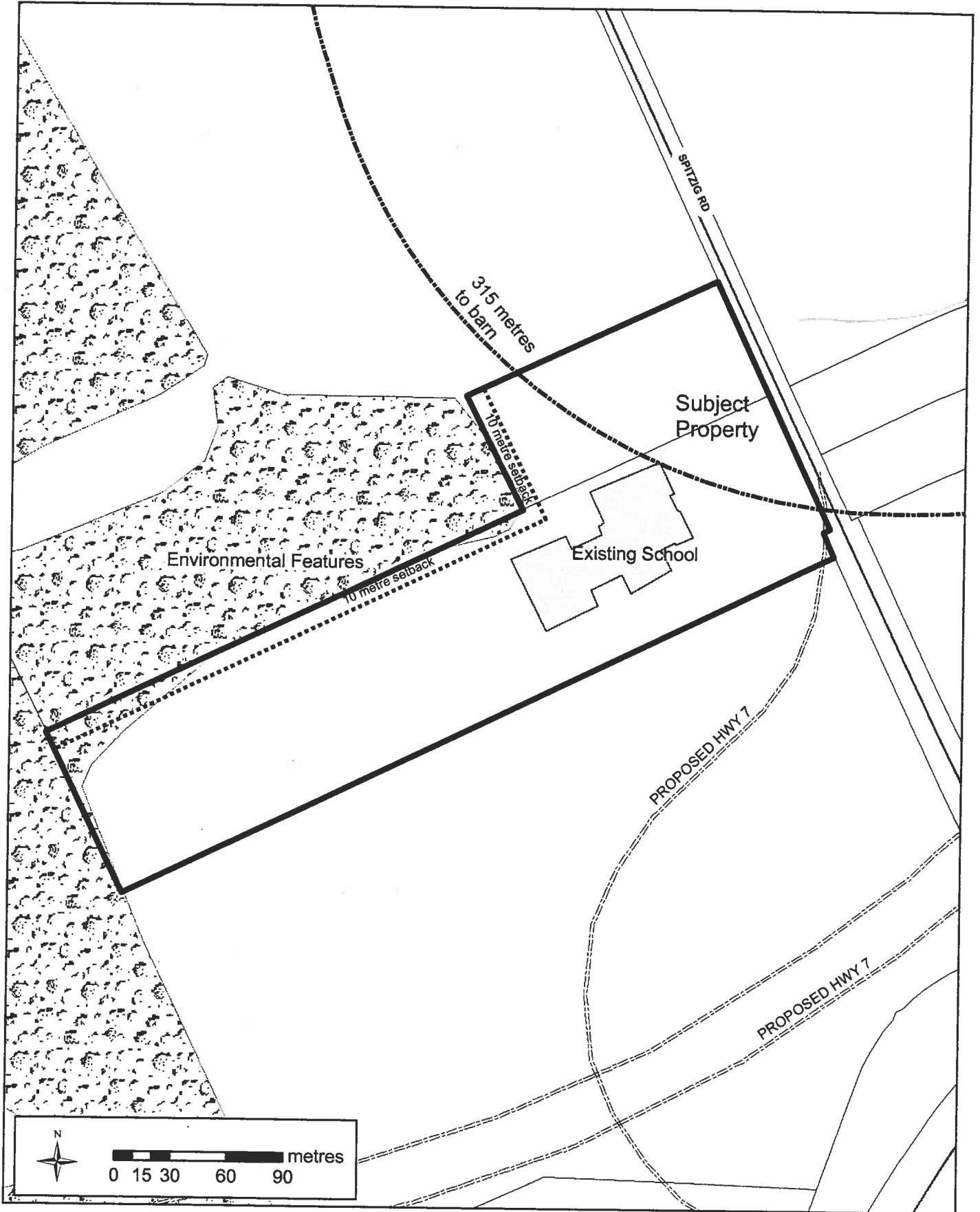
SUBJECT LANDS OUTLINED THUS —————  
THIS IS SCHEDULE 'A' TO BYLAW  
PASSED THIS \_\_\_\_\_ DAY OF \_\_\_\_\_ 198

\_\_\_\_\_  
MAYOR  
\_\_\_\_\_  
CLERK

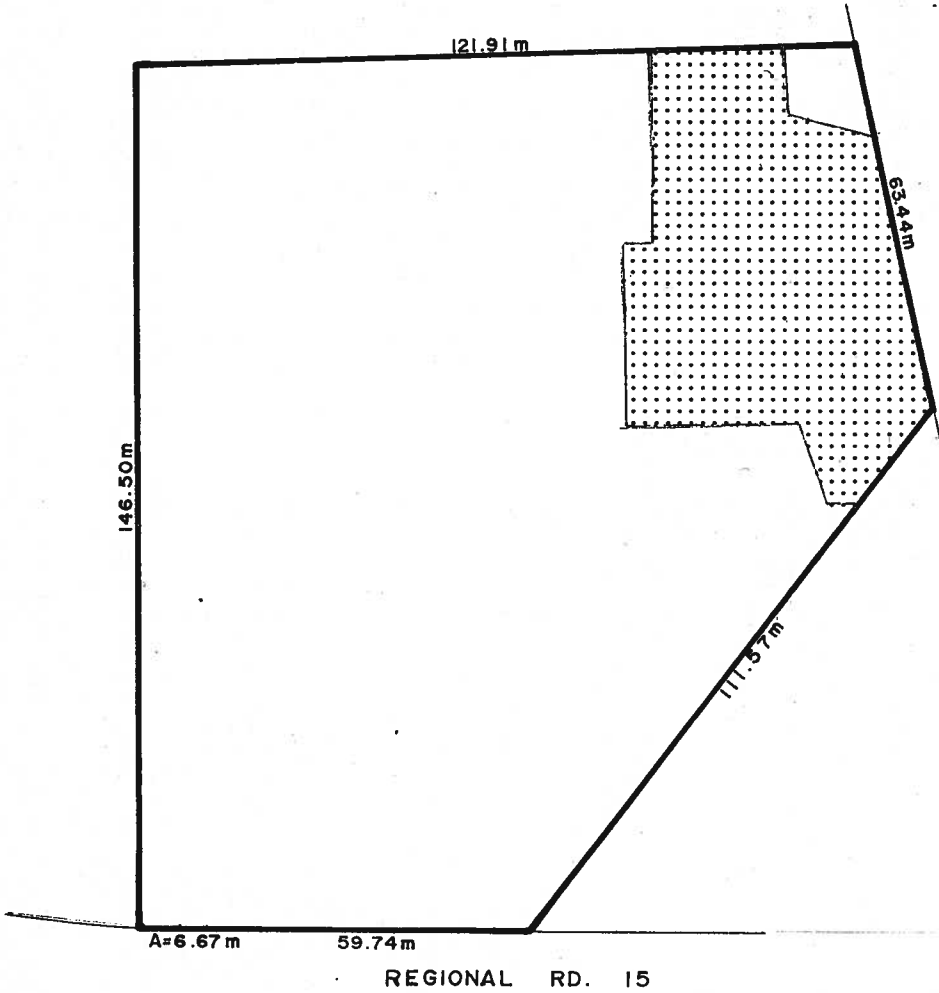
SCALE : 0 50 100 M.

SECTION 26.1.90

Schedule 'A'  
1058 Spitzig Rd  
Woodland Christian School



PART LOT 18 G.C.T.  
TOWNSHIP OF WOOLWICH



'AREA OF OPERATION'   
SUBJECT LANDS OUTLINED THUS 

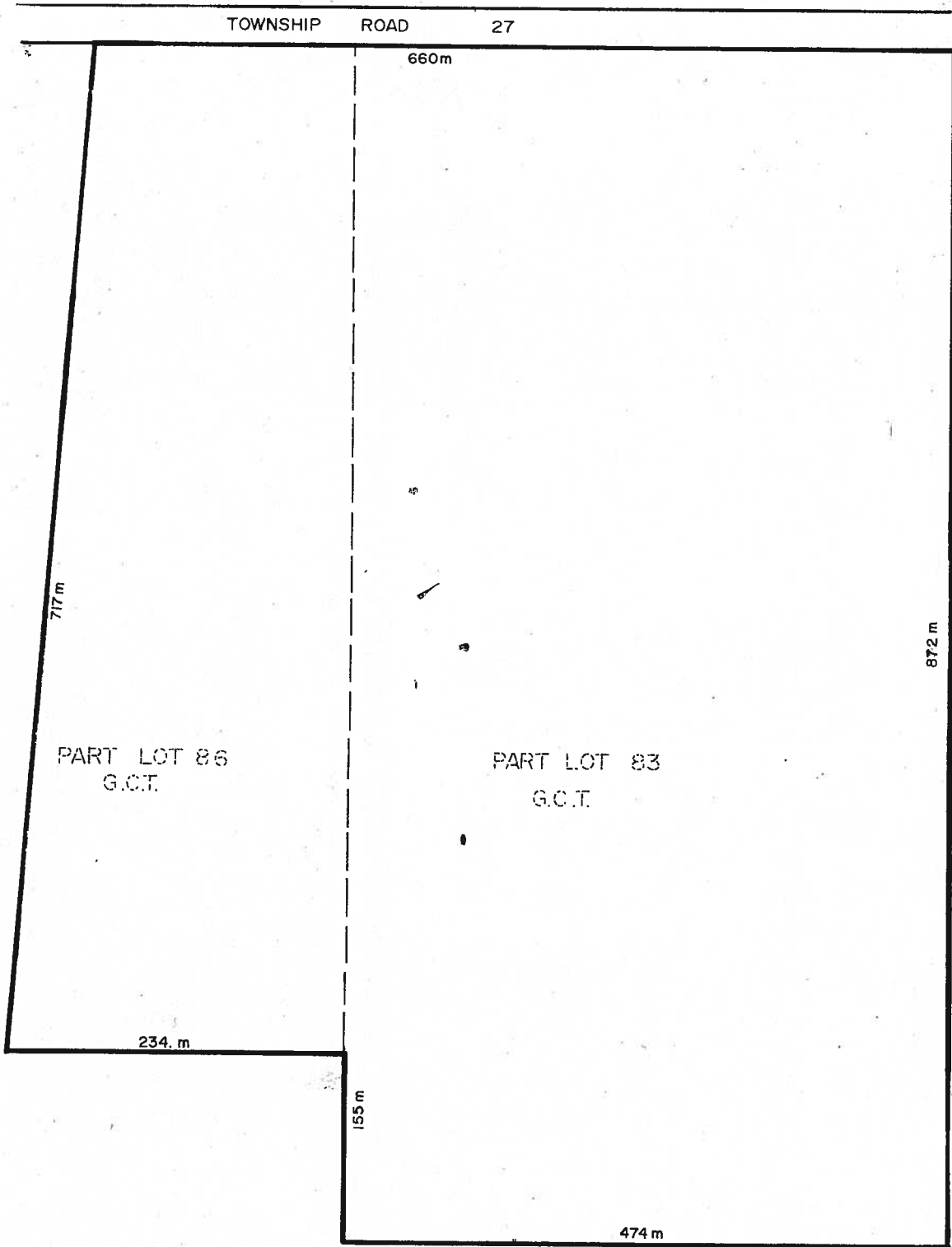
THIS IS SCHEDULE ' ' OF BY-LAW  
PASSED THIS DAY OF , 1986

\_\_\_\_\_  
MAYOR

\_\_\_\_\_  
CLERK

TOWNSHIP OF WOOLWICH

PART LOTS 83 & 86 G.C.T.



SUBJECT LANDS OUTLINED THUS \_\_\_\_\_

THIS IS SCHEDULE " " TO BY- LAW \_\_\_\_\_

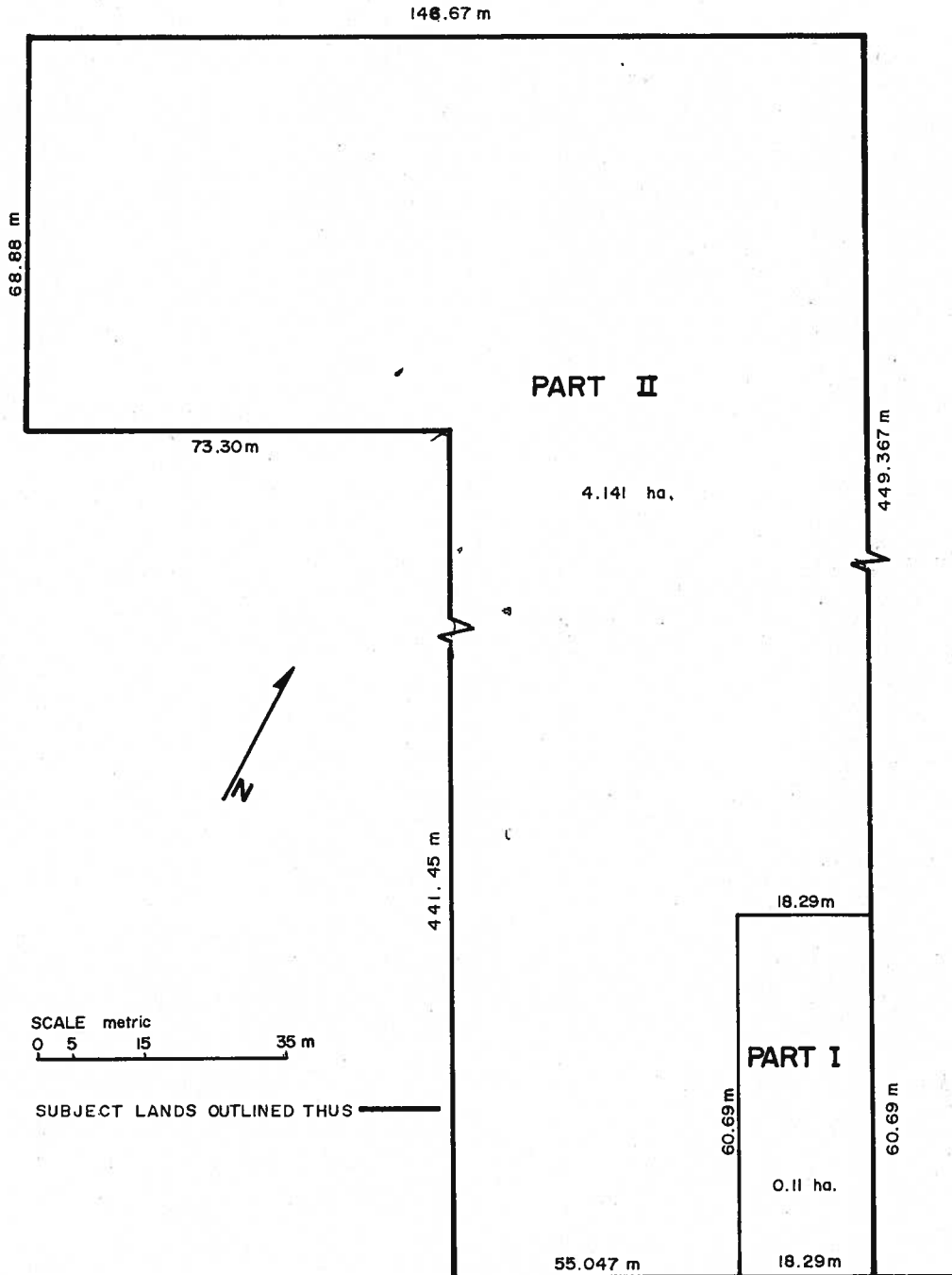
PASSED THIS \_\_\_\_\_ DAY OF \_\_\_\_\_, 1986.

\_\_\_\_\_  
MAYOR

\_\_\_\_\_  
CLERK

PART LCT 106 G.C.T. I

TOWNSHIP OF WOOLWICH



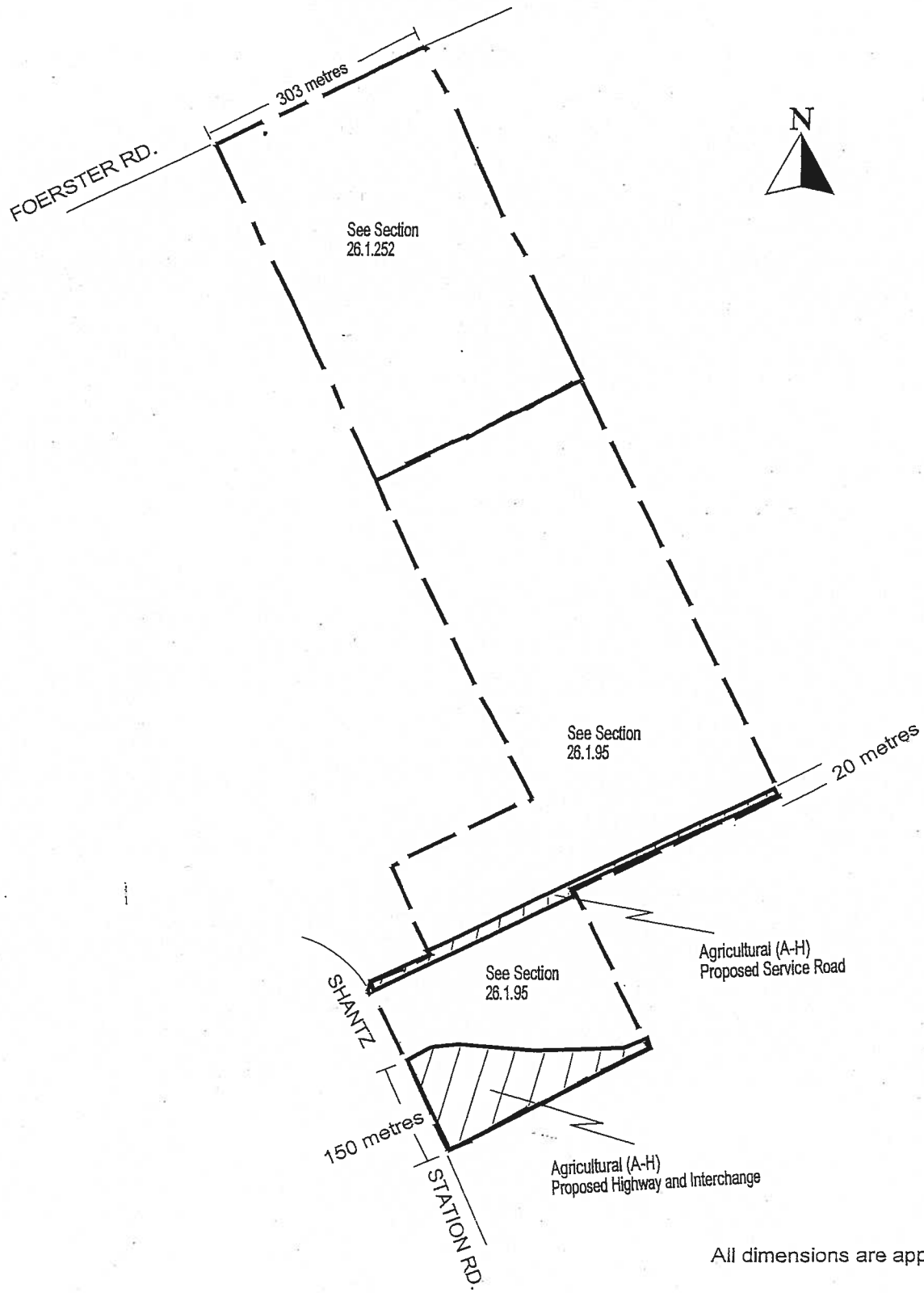
THIS IS SCHEDULE ' ' OF BY-LAW  
PASSED THIS DAY OF , 1986  
SEE PART 20, SCHEDULE 'B'

MAYOR

CLERK

SECTION 26.1.94

**PART LOT 83 AND 84, G.C.T.  
(1158 FOERSTER ROAD AND  
2137 SHANTZ STATION ROAD)**

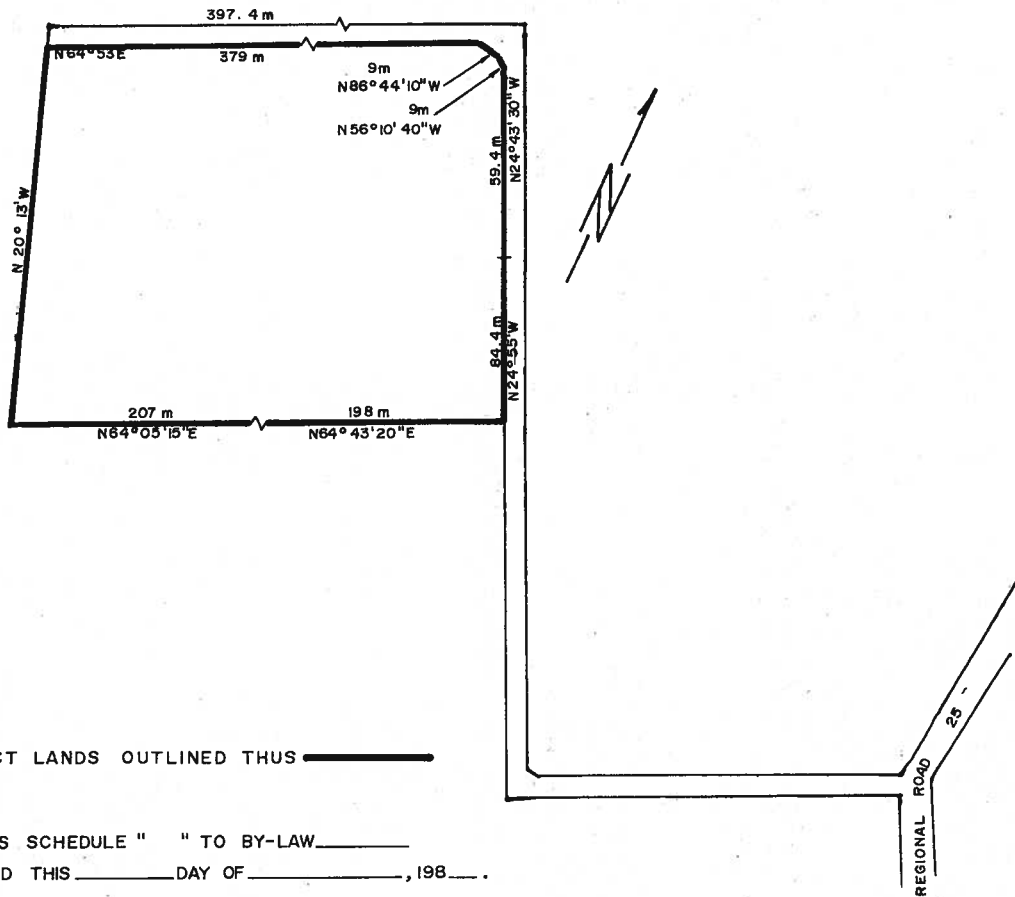


All dimensions are approximate.

SECTION 26.1.252  
and SECTION 26.1.95

# PART LOT 79 G.C.T.

TOWNSHIP OF WOOLWICH

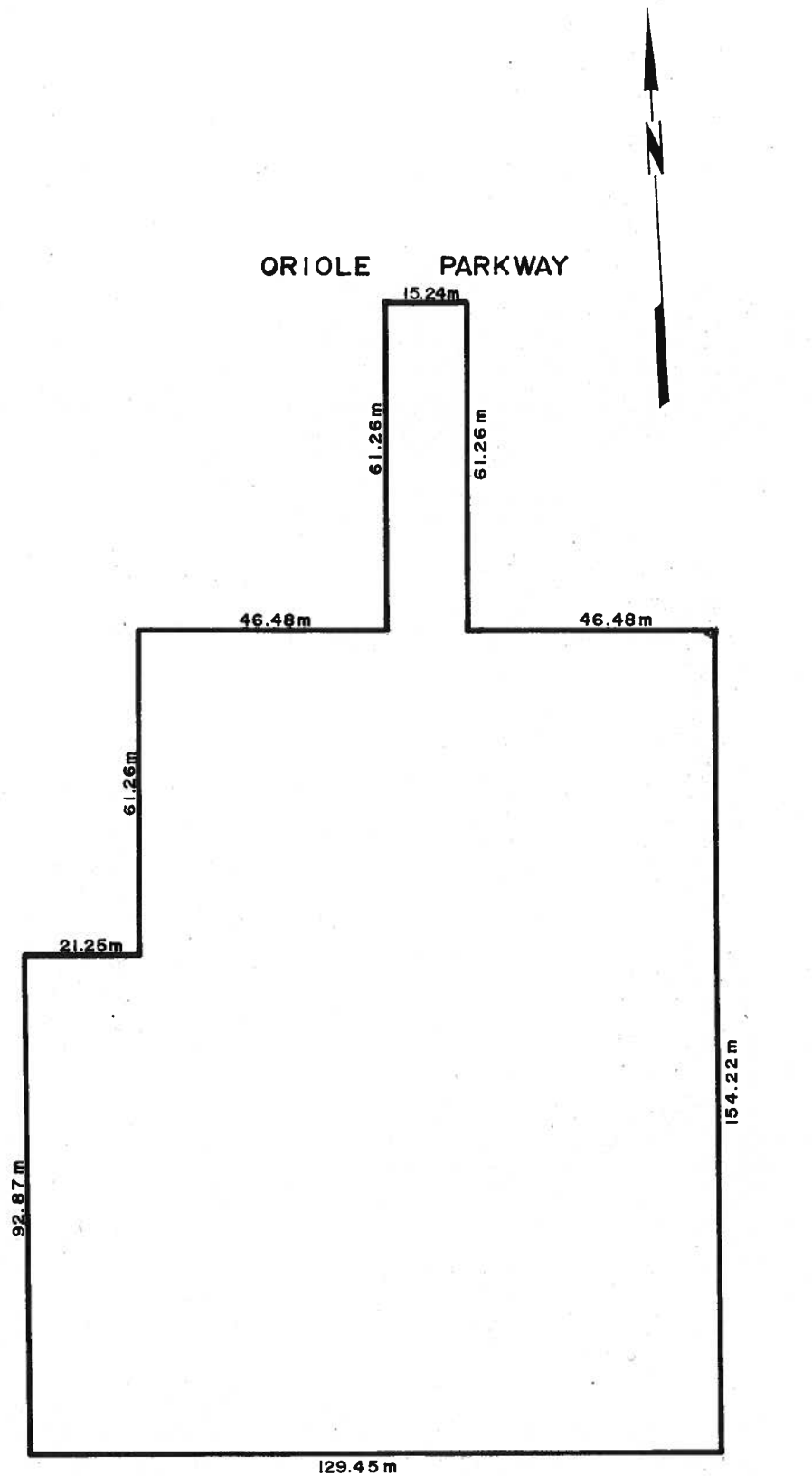


\_\_\_\_\_  
MAYOR

\_\_\_\_\_  
CLERK

# PART LOT 5 REG. PLAN 1331

TOWNSHIP OF WOOLWICH



SCALE metric - 1:1000

SUBJECT LANDS OUTLINED THUS

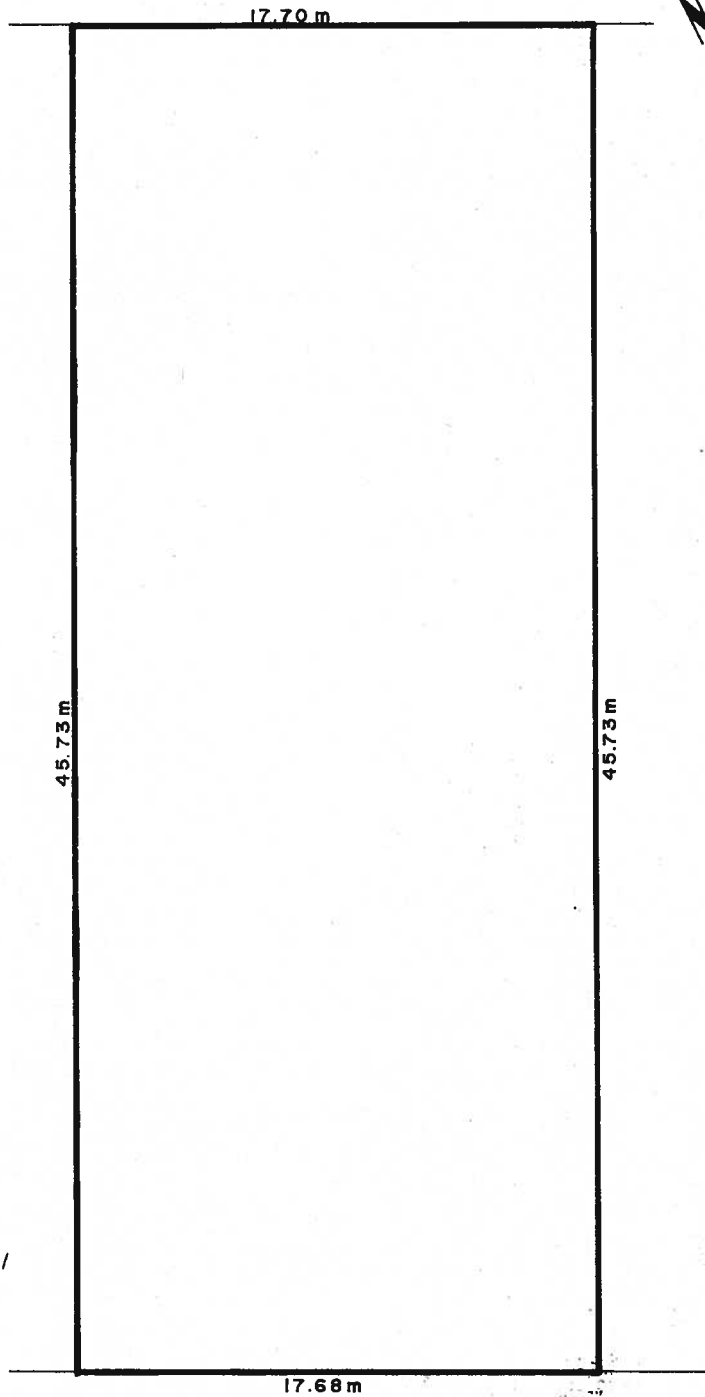
THIS IS SCHEDULE " " OF BY-LAW  
PASSED THIS DAY OF , 1986.

\_\_\_\_\_  
MAYOR

\_\_\_\_\_  
CLERK

SECTION 26.1.97

LOT 82, REG. PLAN 98  
TOWNSHIP OF WOOLWICH



RIVERSIDE DRIVE

SCALE metric 1:200



SUBJECT LANDS OUTLINED THUS

THIS IS SCHEDULE " " OF BY-LAW  
PASSED THIS DAY OF , 1986.

MAYOR

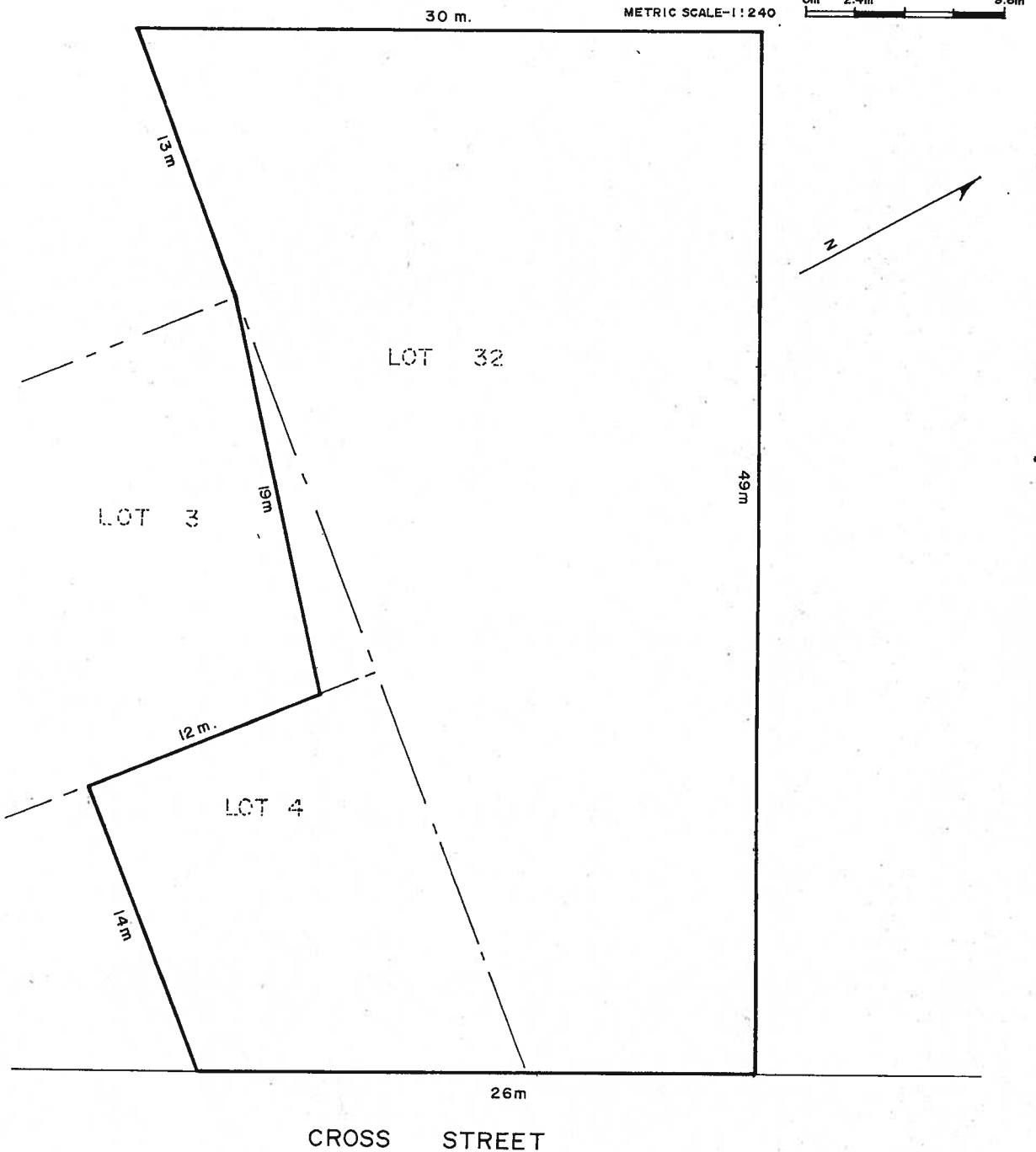
CLERK

SECTION 26.1.98

LOT 32 & PART OF LOTS 3 & 4 REGISTERED PLAN 558

TOWNSHIP OF WOOLWICH

SUBJECT LANDS OUTLINED THUS \_\_\_\_\_



THIS IS SCHEDULE " " TO BY-LAW \_\_\_\_\_

PASSED THIS \_\_\_\_\_ DAY OF \_\_\_\_\_, 1986.

\_\_\_\_\_  
MAYOR

\_\_\_\_\_  
CLERK

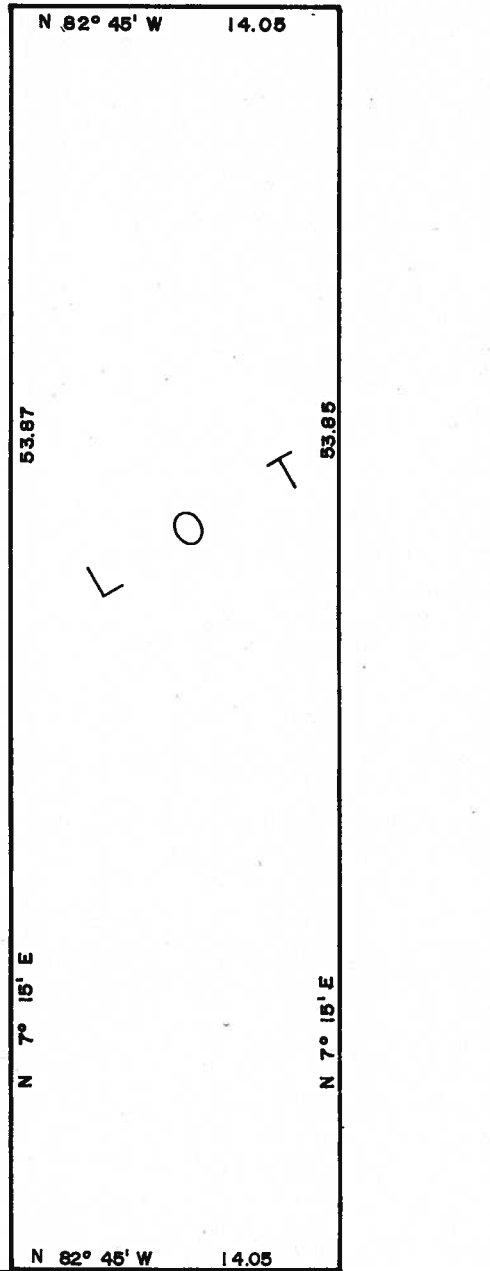
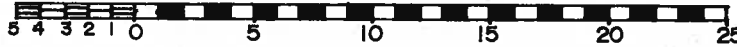
SEE PART 2 - SCHEDULE 'B'

SECTION 26.1.99

PART OF LOT 6, REG. PLAN 570  
TOWNSHIP OF WOOLWICH  
(ELMIRA)

SUBJECT LAND OUTLINED THUS → \_\_\_\_\_

SCALE IN METRES — 1:250



CHURCH STREET  
THIS IS SCHEDULE 'A' TO BY-LAW \_\_\_\_\_,  
PASSED THIS \_\_\_\_\_ DAY OF \_\_\_\_\_, 19 \_\_\_\_\_.

\_\_\_\_\_  
MAYOR

\_\_\_\_\_  
CLERK  
SEE PART 3 — SCHEDULE 'B'