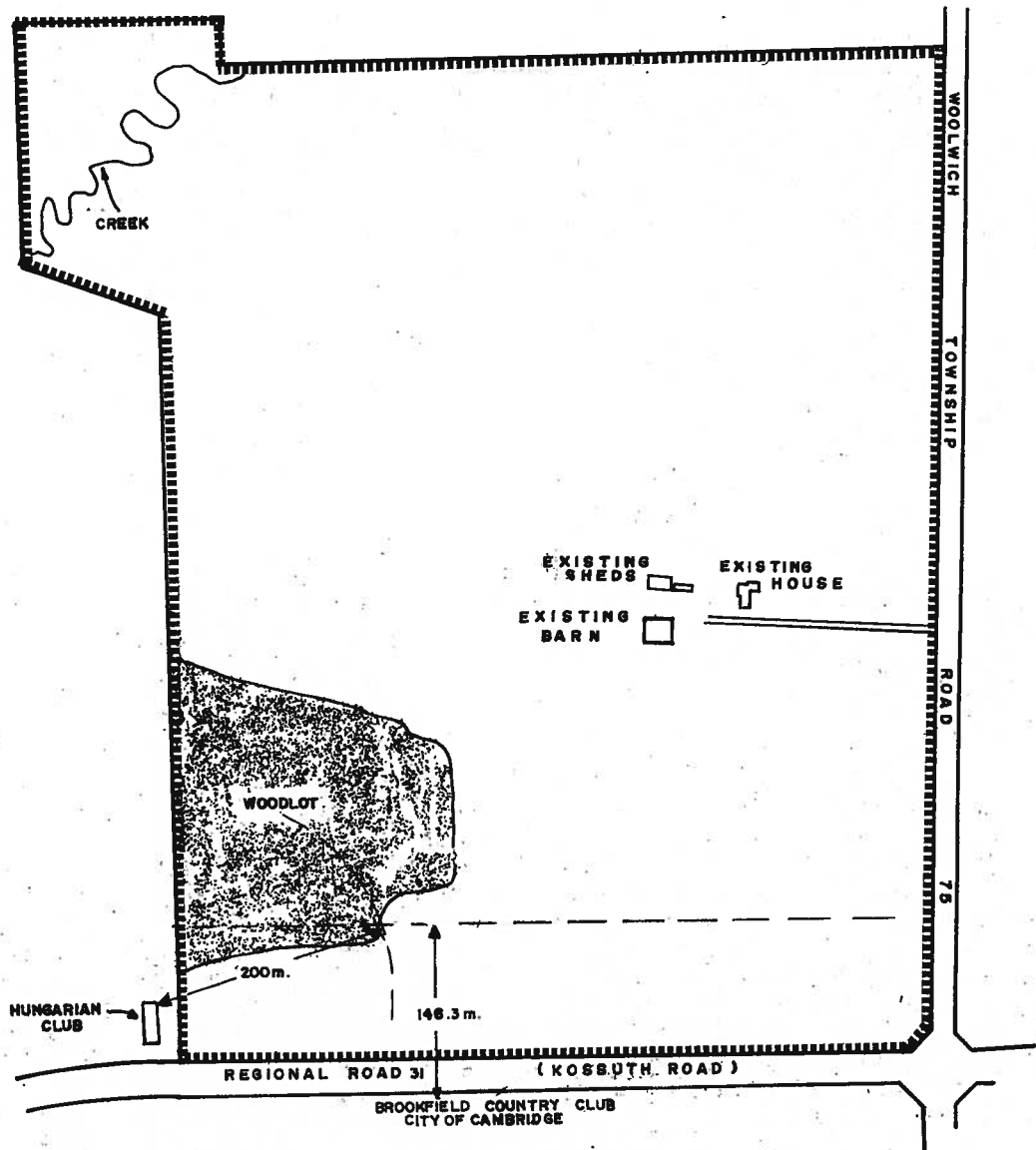


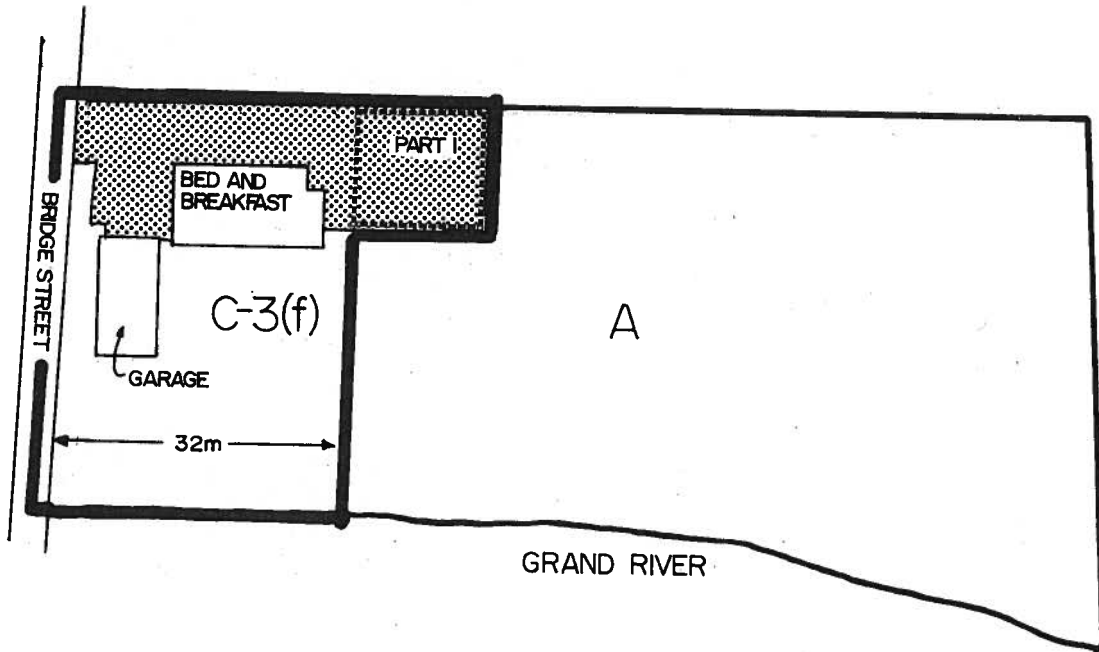
PART LOTS 88 & 92, G.C.T.
TOWNSHIP OF WOOLWICH



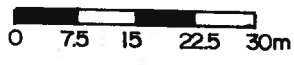
THIS IS SCHEDULE 'A' TO BY-LAW _____ MAYOR
PASSED THE _____ DAY OF _____, 199 _____ CLERK

SECTION 26.1.151

PART LOT 71, G.C.T.
TOWNSHIP OF WOOLWICH



ASPHALT PARKING AREA 

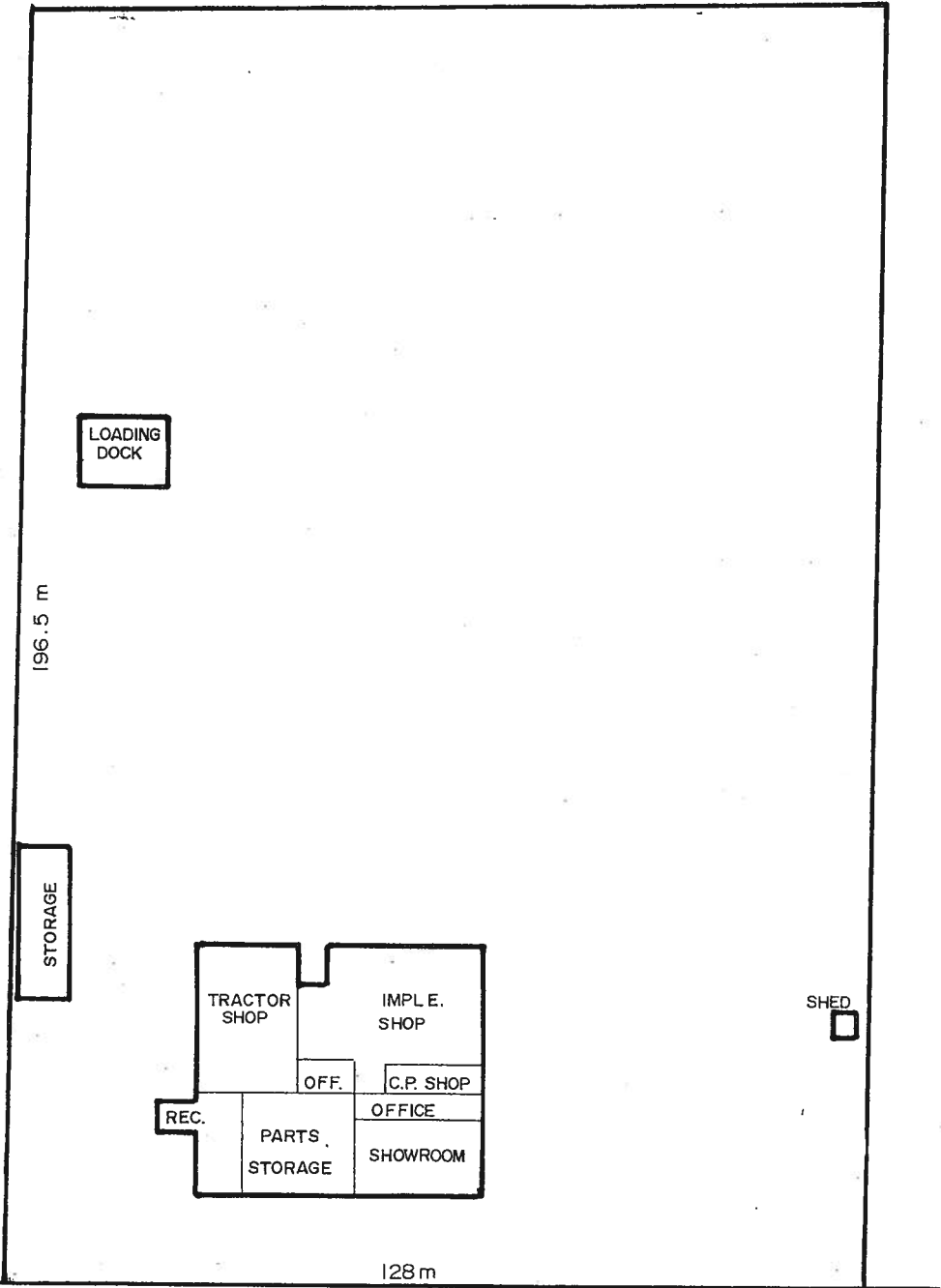


THIS IS SCHEDULE "A" TO BY-LAW _____
PASSED THIS _____ DAY OF _____, 1991.

MAYOR _____

CLERK _____

TOWNSHIP OF WOOLWICH
G.C.T. PART LOT
104



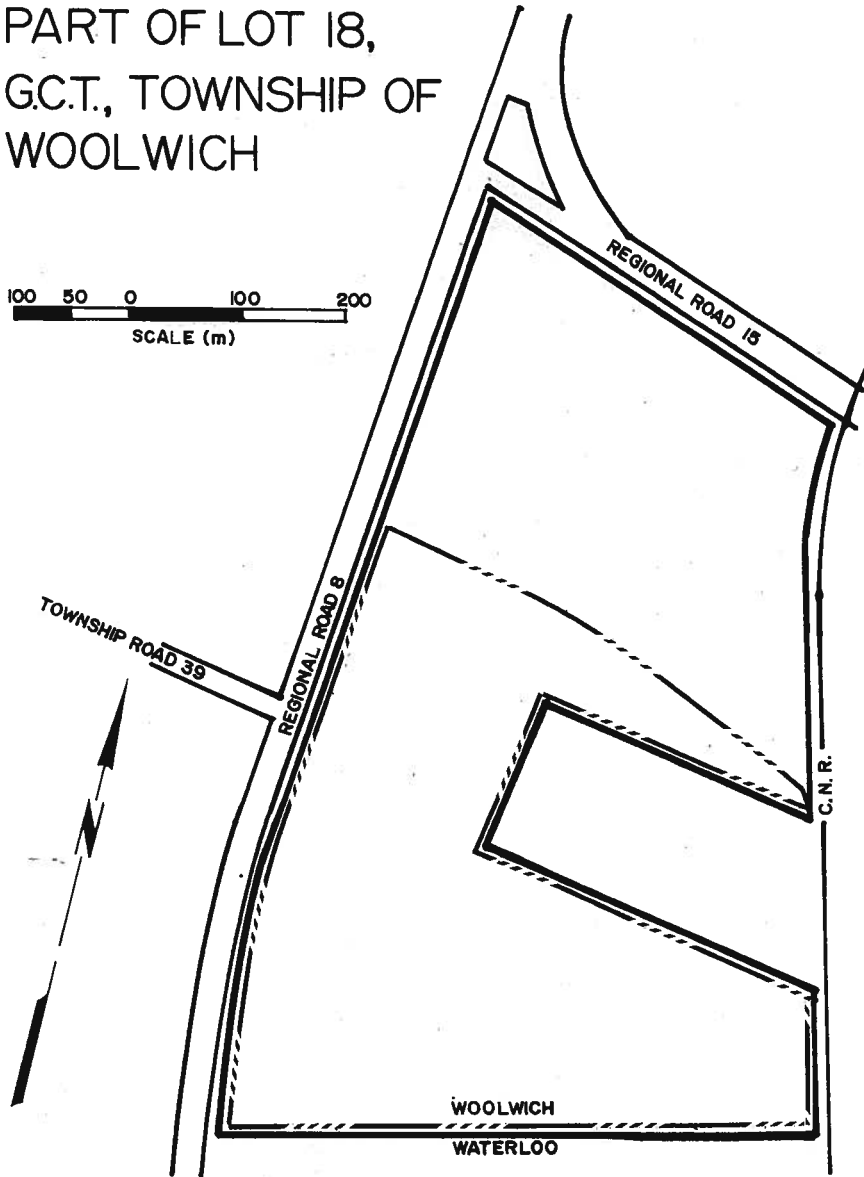
REGIONAL ROAD NO. 86

THIS IS SCHEDULE 'A' OF BYLAW _____
PASSED THIS ____ DAY OF _____ 19 ____ . MAYOR

CLERK

**MAP 26.1.154 – Deleted
(By-law 35-2008)**

PART OF LOT 18,
G.C.T., TOWNSHIP OF
WOOLWICH



SUBJECT LANDS 
LANDS SUBJECT TO SECTION 26.1.155 

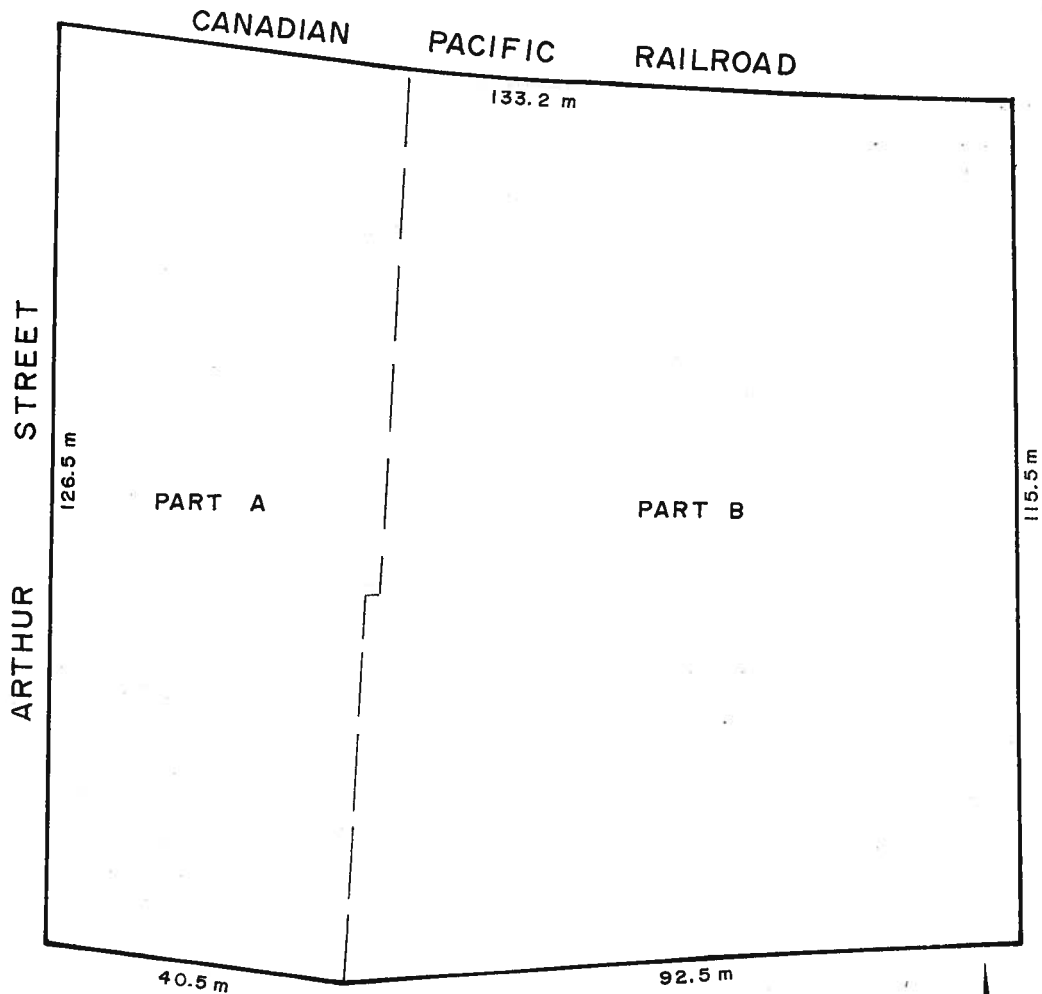
THIS IS SECTION 'A' TO BY-LAW _____
PASSED THIS ____ DAY OF _____, 199 .

MAYOR _____

CLERK _____

SECTION 26.1.155

LOT 20 & PART OF LOT 21
REGISTERED PLAN 1301
TOWNSHIP OF WOOLWICH
(ELMIRA)



SUBJECT LANDS OUTLINED THUS _____

THIS IS SCHEDULE "A" TO BY-LAW
PASSED THIS ____ DAY OF _____, 19

MAYOR

CLERK

SEE PART 2 - SCHEDULE 'B'

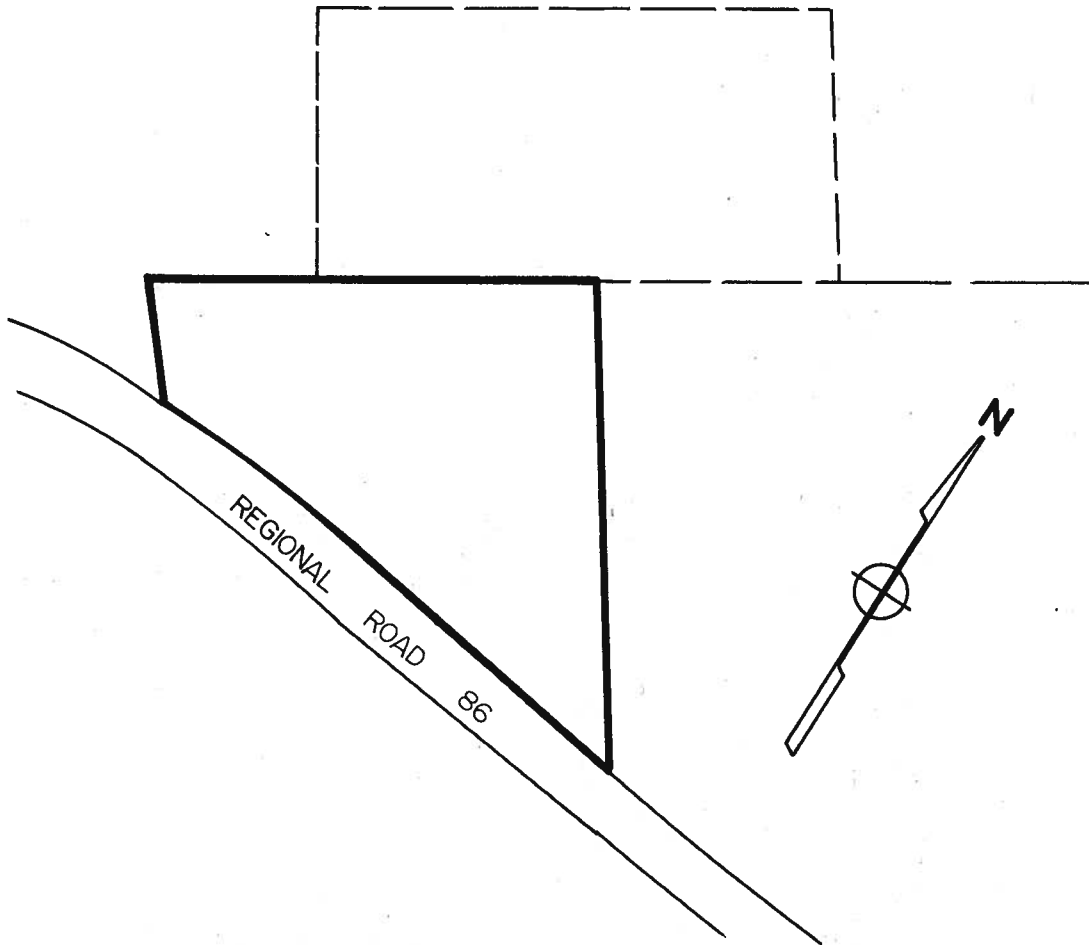
SCALE: metric



TOWNSHIP OF WOOLWICH

PART LOT 127 G.C.T.

PART LOT 1 BLOCK 3 CONCESSION III
HITCHING TRACT



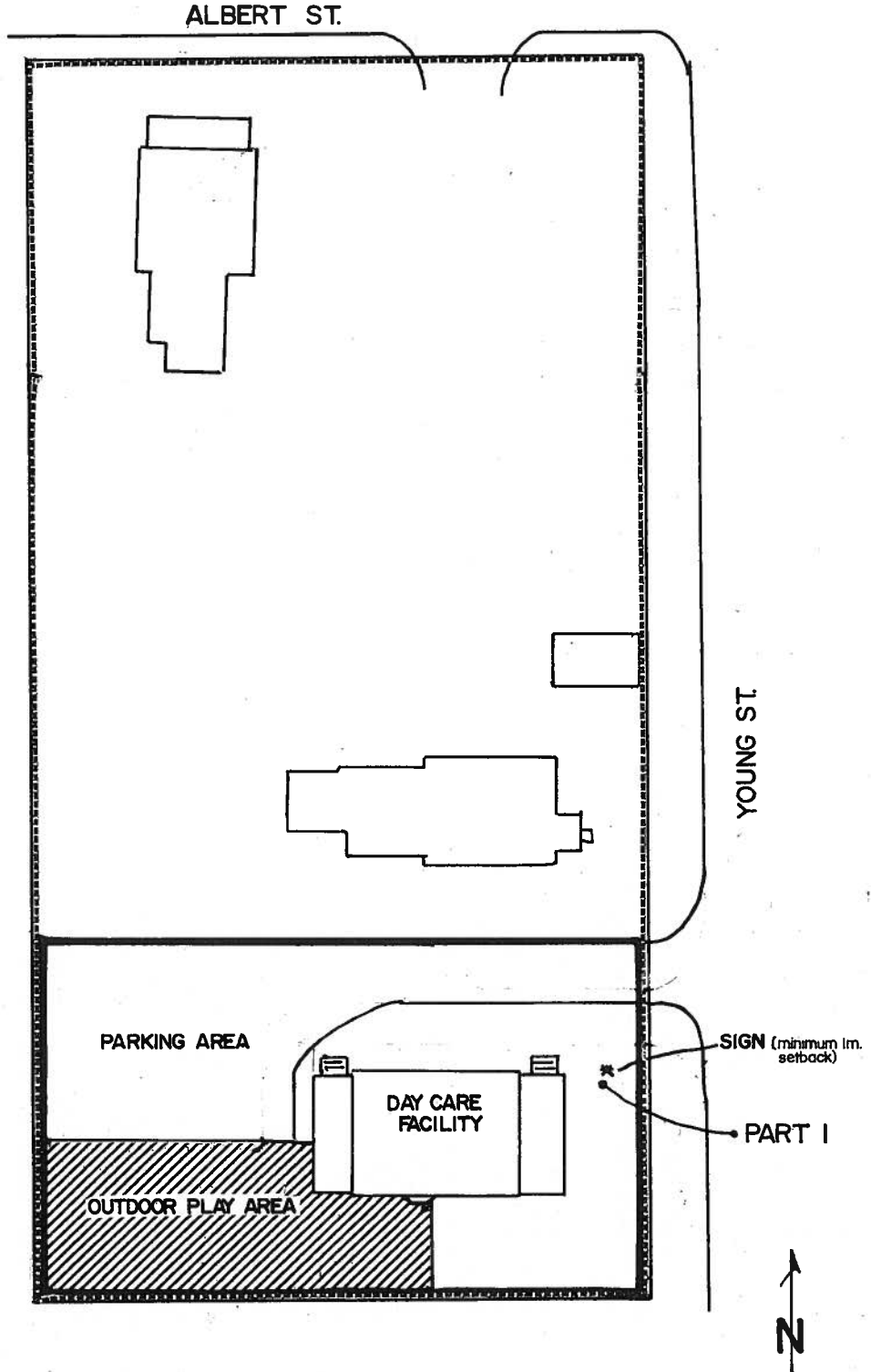
SUBJECT LANDS OUTLINED THUS _____

THIS IS SCHEDULE 'A' OF BY-LAW _____
PASSED THIS _____ DAY OF _____, 19 ____.

MAYOR

CLERK

PLAN 1500
TOWNSHIP OF WOOLWICH



THIS IS SCHEDULE 'A' TO BY-LAW _____,
PASSED THIS _____ DAY OF _____, 199 .



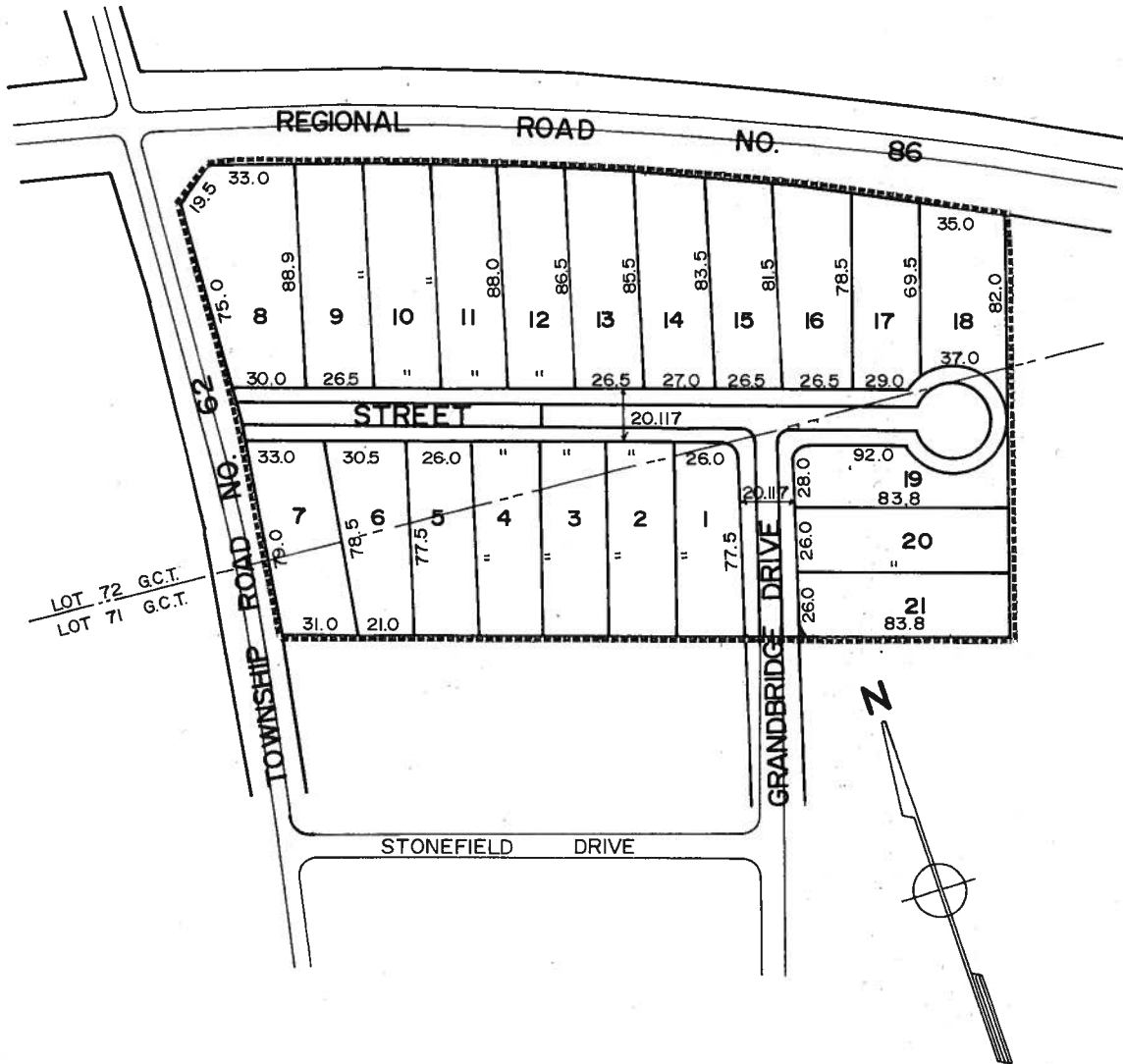
MAYOR

CLERK

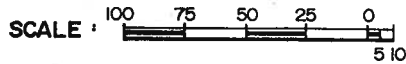
LOTS 1-21 PLAN 30T-89022

PART OF LOTS 71 & 72 G.C.T.

TOWNSHIP OF WOOLWICH



SUBJECT LANDS OUTLINED THUS

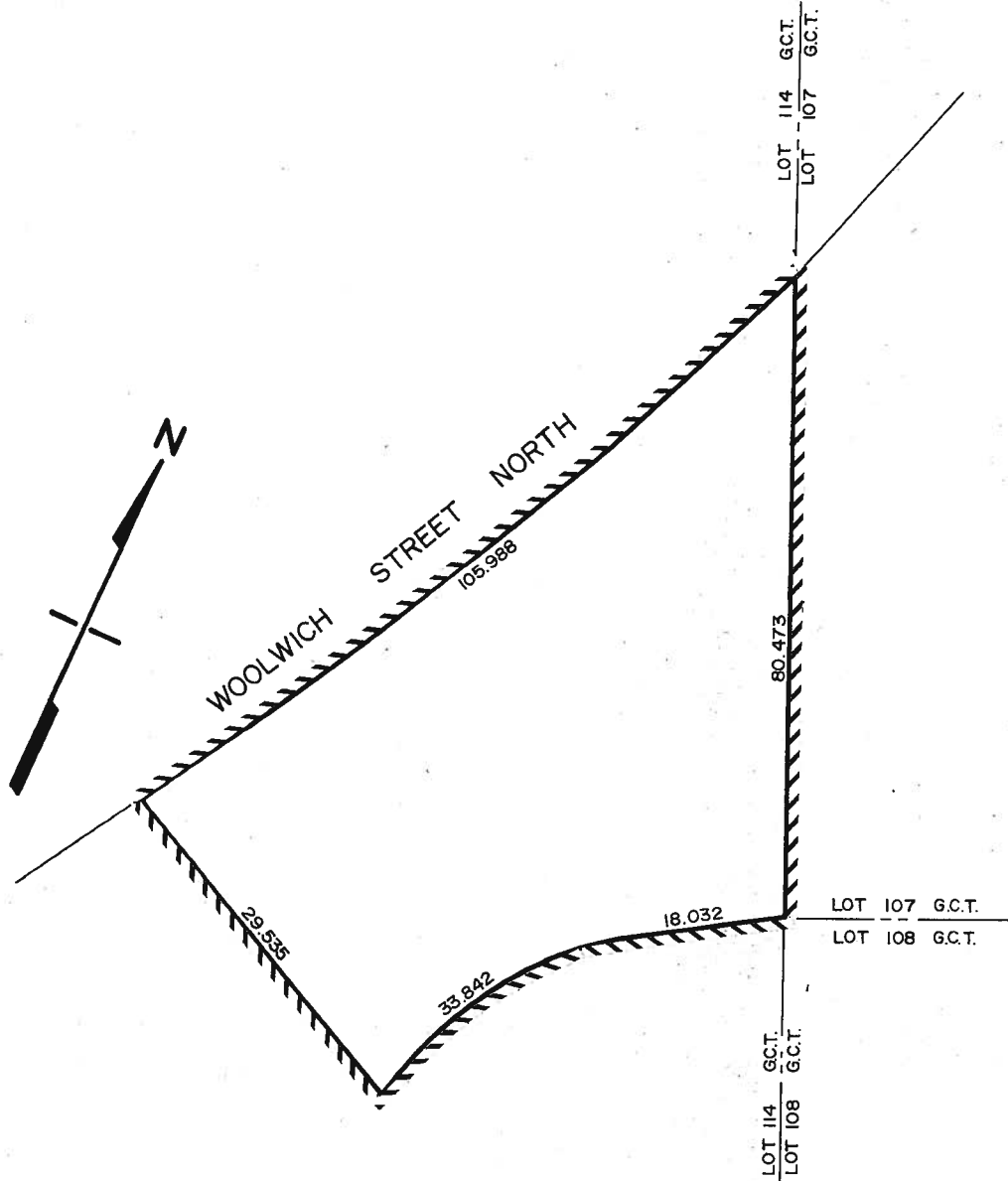


THIS IS SCHEDULE 'A' TO BY-LAW _____
 PASSED THIS ____ DAY OF _____

 MAYOR

 CLERK

TOWNSHIP OF WOOLWICH
PART LOT 114
GERMAN COMPANY TRACT

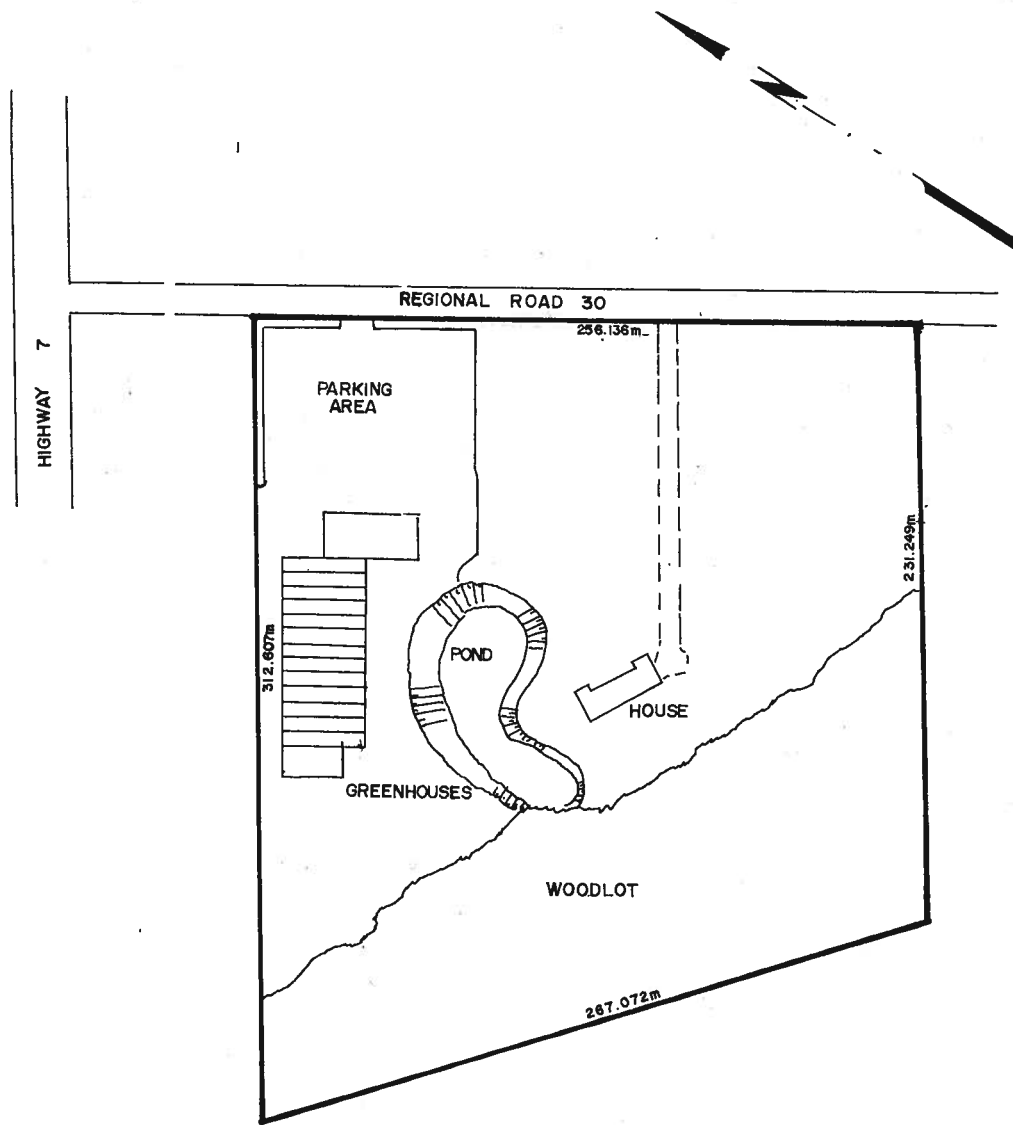


SUBJECT LAND OUTLINED THUS 

THIS IS SCHEDULE 'A' OF BYLAW _____
PASSED THIS ____ DAY OF _____ 19 ____ . MAYOR

CLERK

PART LOT 106 G.C.T.
UPPER BLOCK
TOWNSHIP OF WOOLWICH



SCALE 1:1500

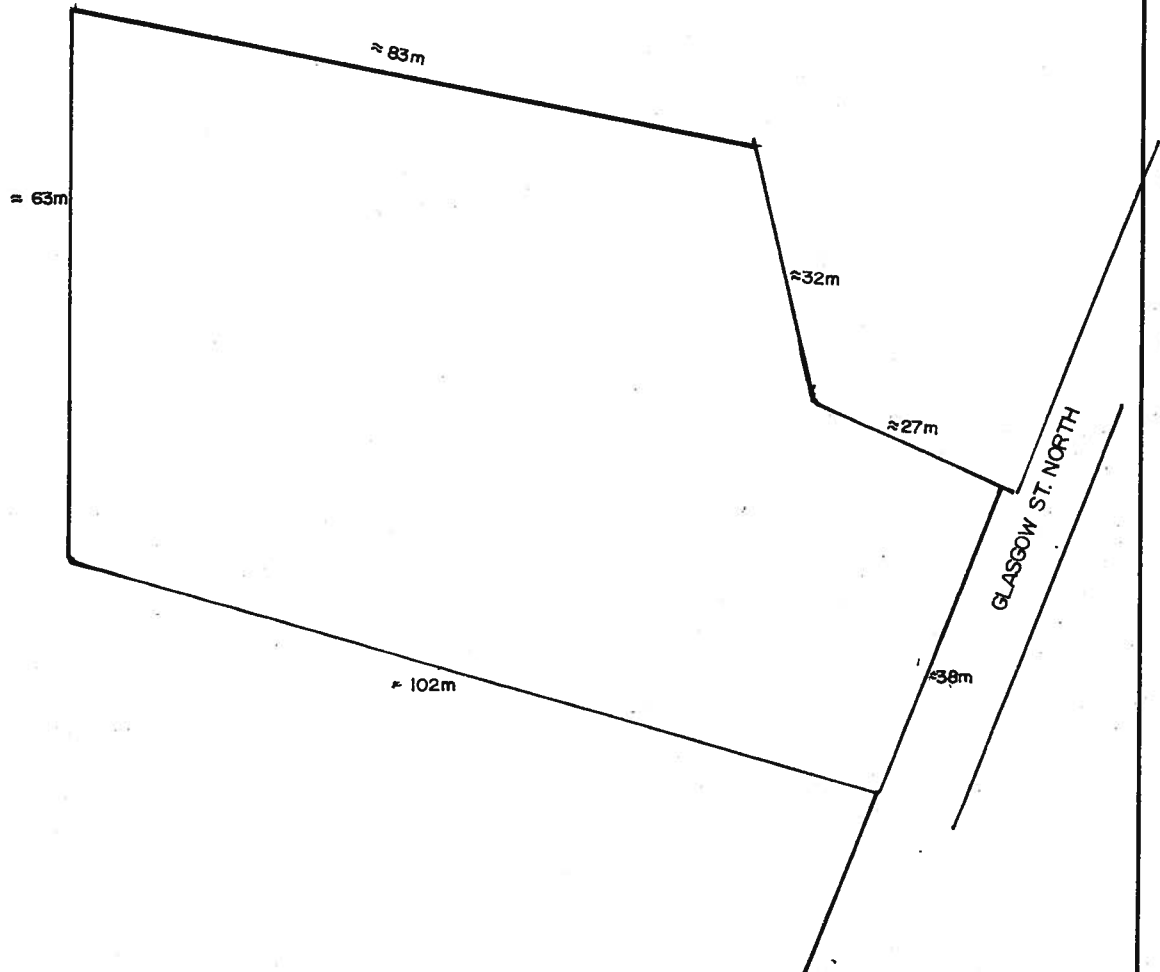
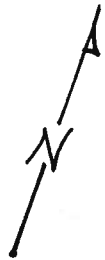
SUBJECT LANDS 

THIS IS SCHEDULE 'A' OF BY-LAW
PASSED THIS DAY OF 1991.

MAYOR

CLERK

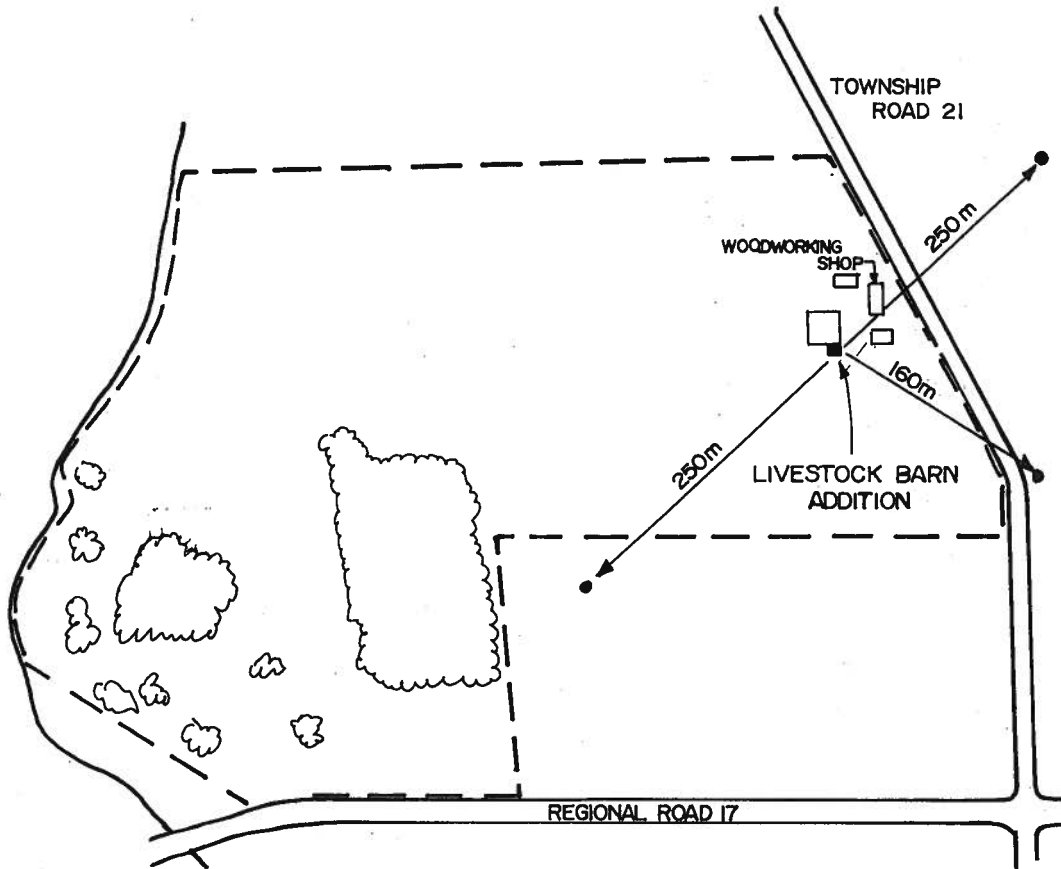
PART LOT 41, G.C.T.
TOWNSHIP OF WOOLWICH



THIS IS SCHEDULE 'A' OF BYLAW _____
PASSED THIS ____ DAY OF _____ 19 ____ . MAYOR

CLERK

PART LOT 38, G.C.T.
TOWNSHIP OF WOOLWICH



0 40 80 120 160 200

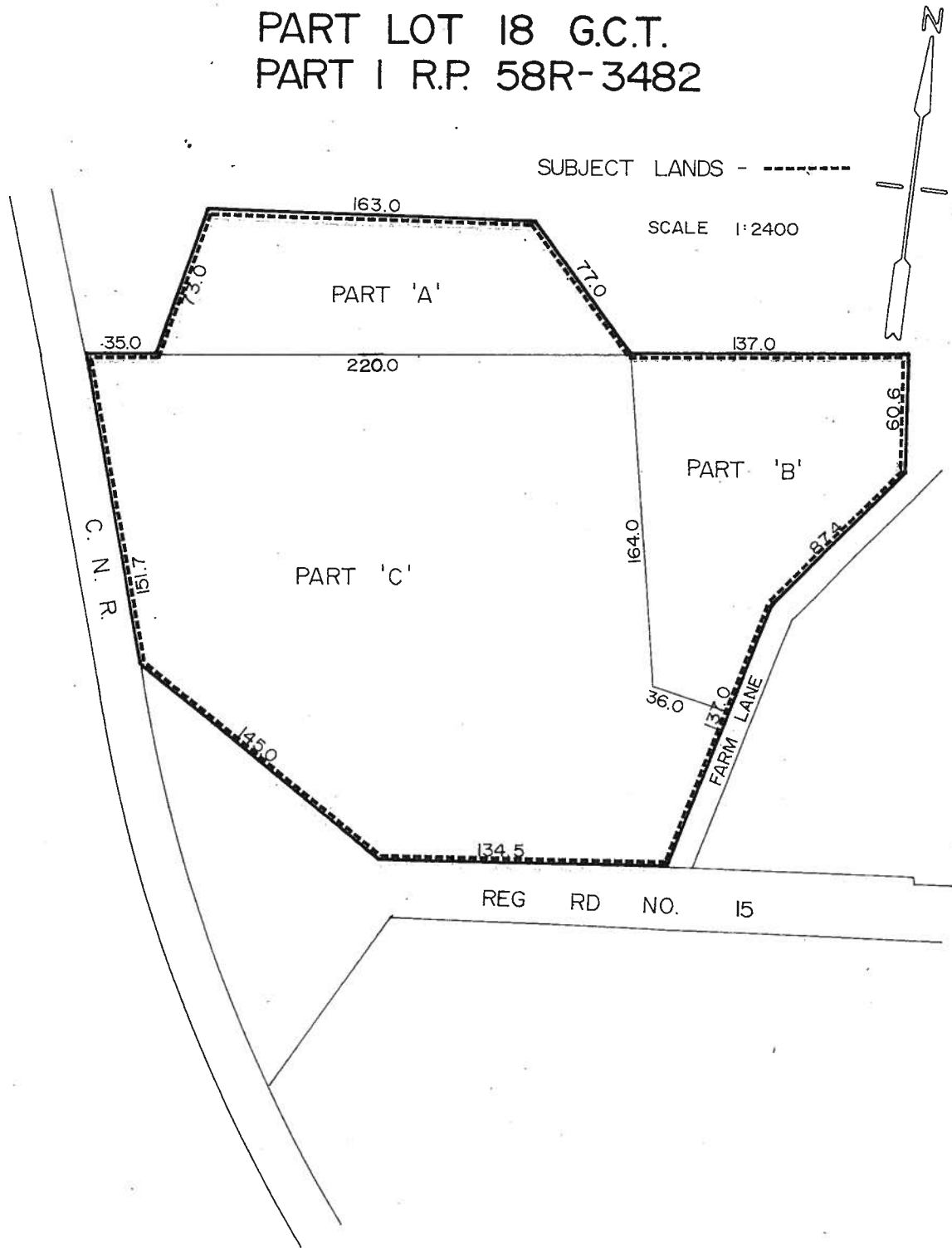


THIS IS SCHEDULE 'A' OF BYLAW _____
PASSED THIS ____ DAY OF _____ 19 ____ . MAYOR

CLERK

SECTION 26.1.163

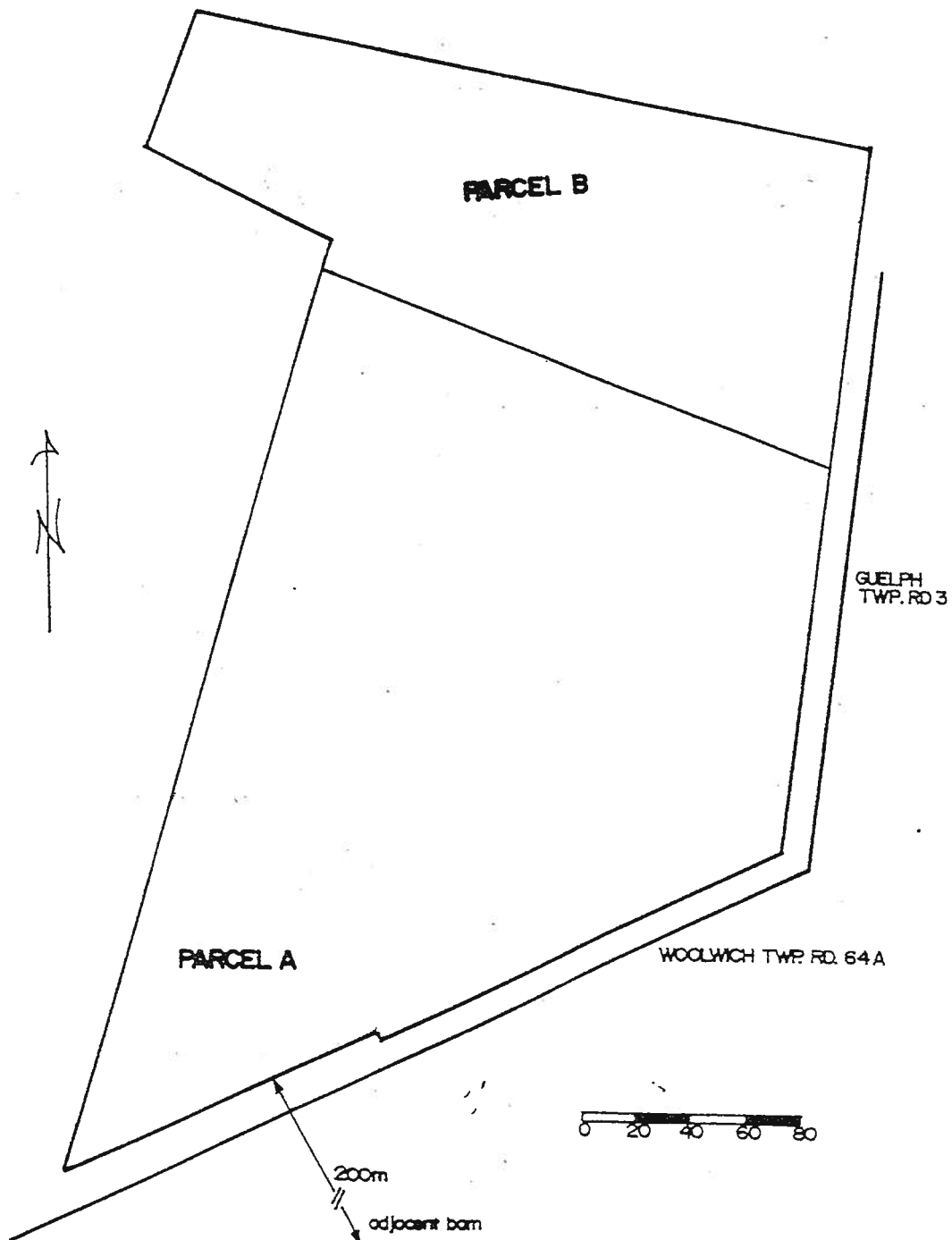
TOWNSHIP OF WOOLWICH
PART LOT 18 G.C.T.
PART I R.P. 58R-3482



THIS IS SCHEDULE 'A' OF BYLAW _____
PASSED THIS ____ DAY OF _____ 19 ____ MAYOR

CLERK

PART LOT 99, G.C.T.
FORMER TOWNSHIP OF WATERLOO

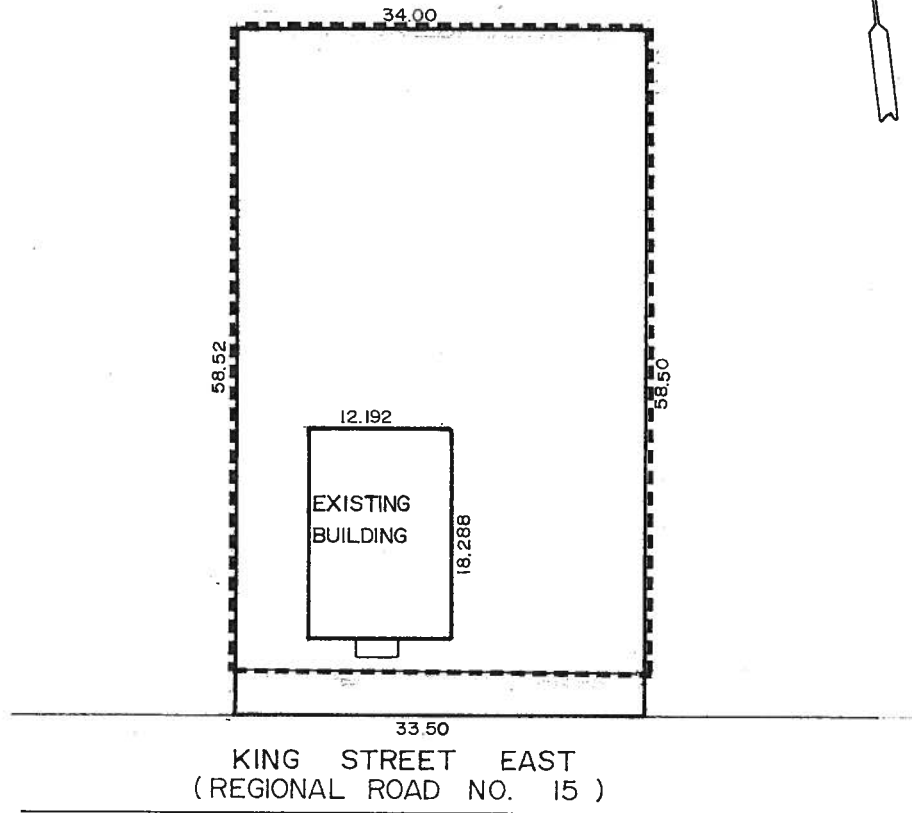


THIS IS SCHEDULE 'A' OF BYLAW _____
PASSED THIS ____ DAY OF _____ 19 ____ . MAYOR

CLERK

TOWNSHIP OF WOOLWICH
GERMAN COMPANY TRACT
PART LOT 14

16 KING STREET EAST
HEIDELBERG ONTARIO



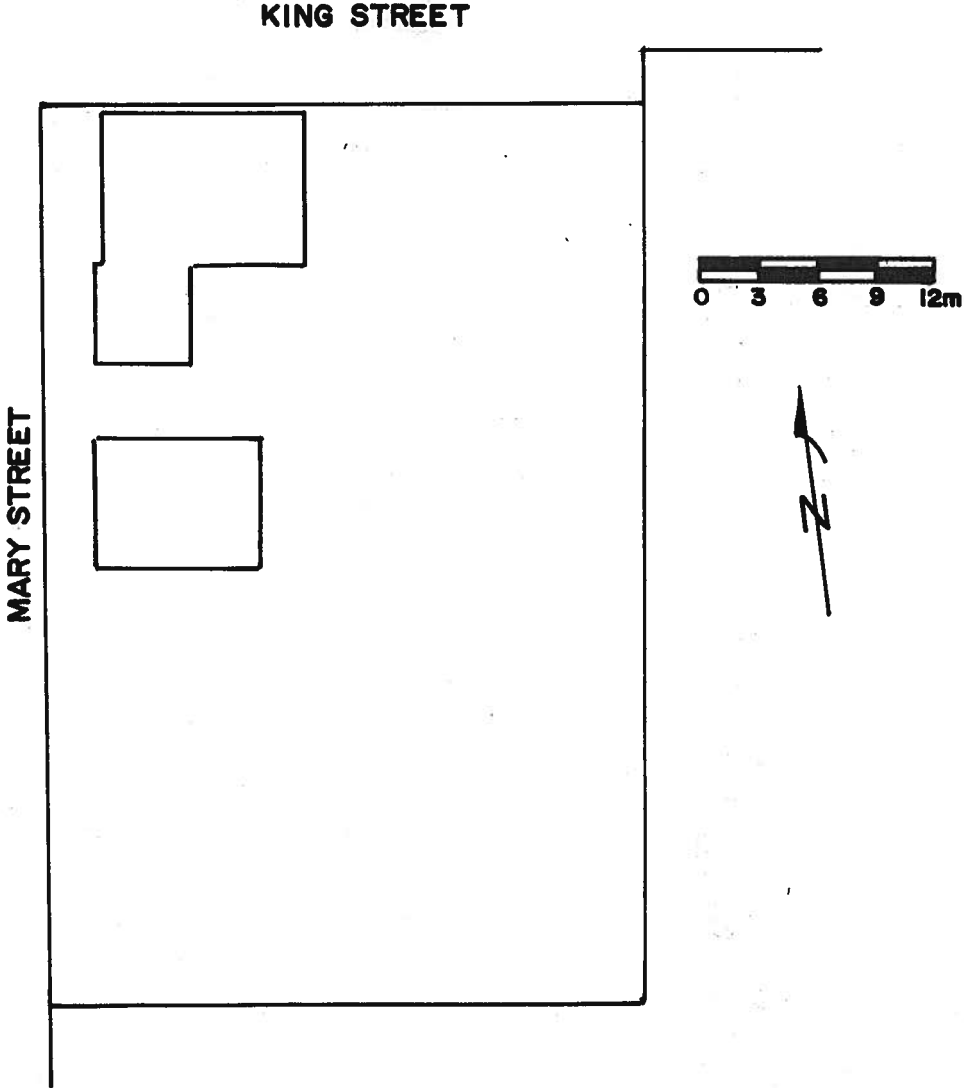
PROPERTY OUTLINED THUS - - - - -

SCALE = 1:500

THIS IS SCHEDULE 'A' OF BYLAW _____
PASSED THIS ____ DAY OF _____ 19 . MAYOR

CLERK

PART OF LOTS 9 & 10, PLAN 603
TOWNSHIP OF WOOLWICH



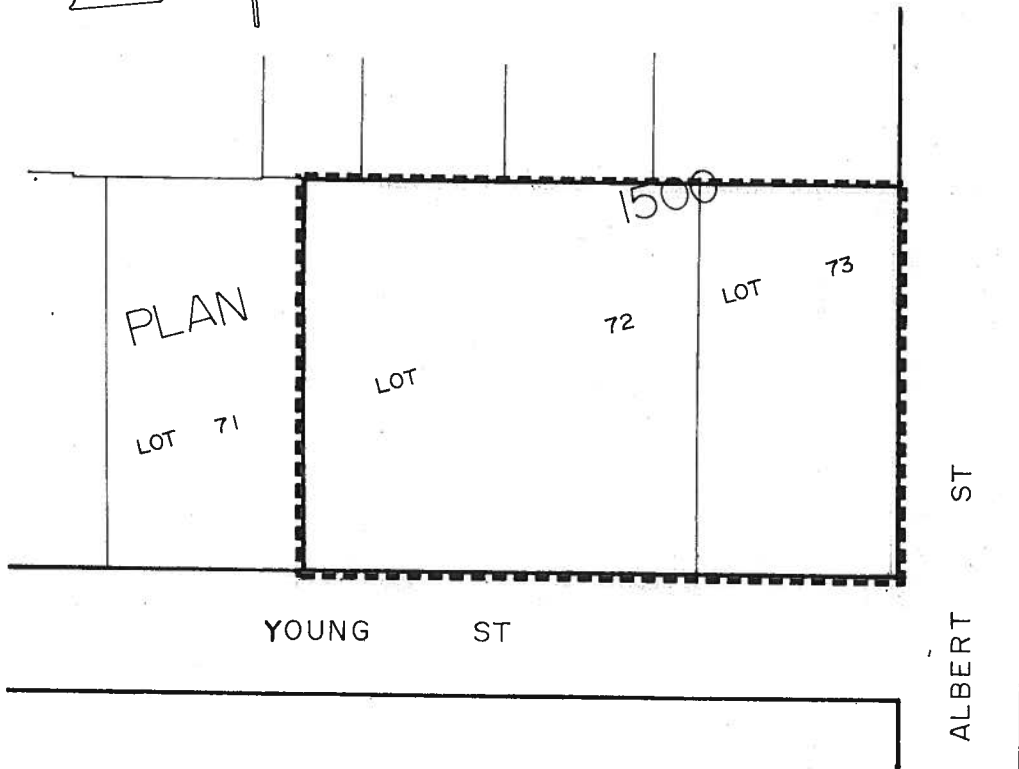
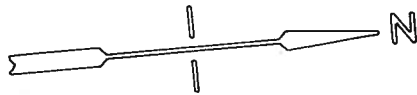
THIS IS SCHEDULE 'A' OF BYLAW _____
PASSED THIS ____ DAY OF _____ 19 ____ . MAYOR _____
CLERK _____

TOWNSHIP OF WOOLWICH

PLAN 1500 LOTS 72,73

SCALE 1=600

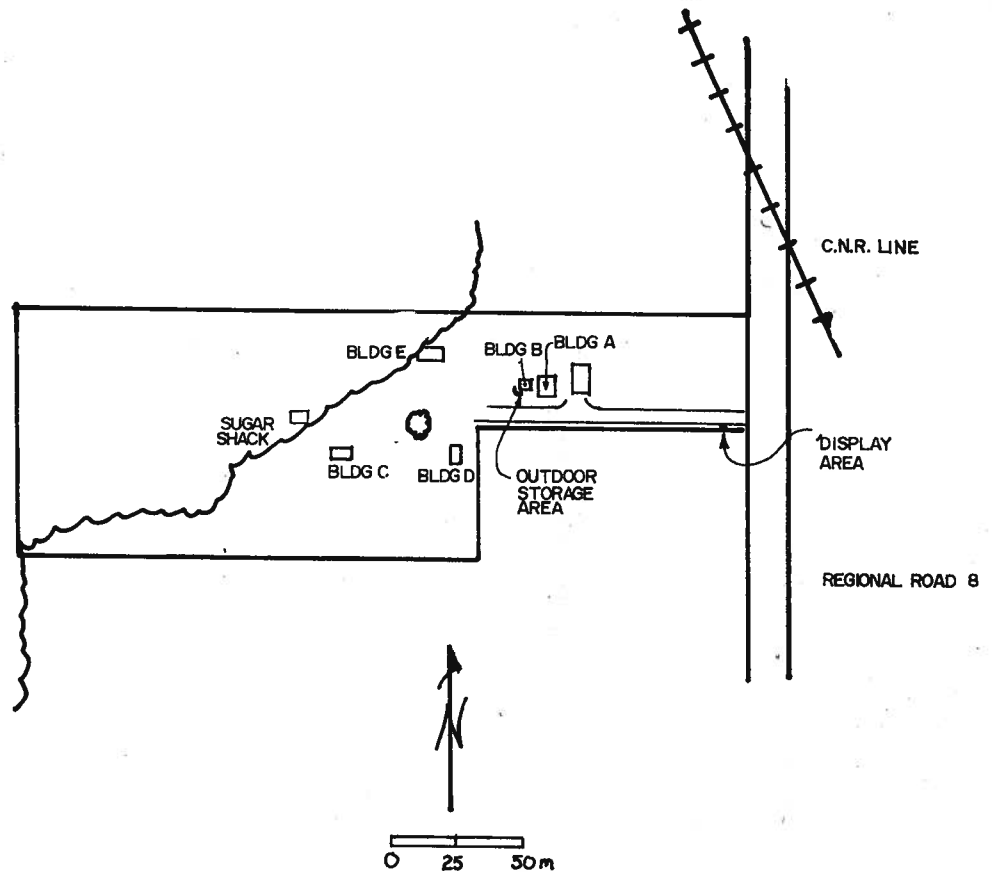
SUBJECT LANDS OUTLINED THUS - - - - -



THIS IS SCHEDULE 'A' OF BYLAW _____
PASSED THIS ____ DAY OF _____ 19 ____ . MAYOR

CLERK

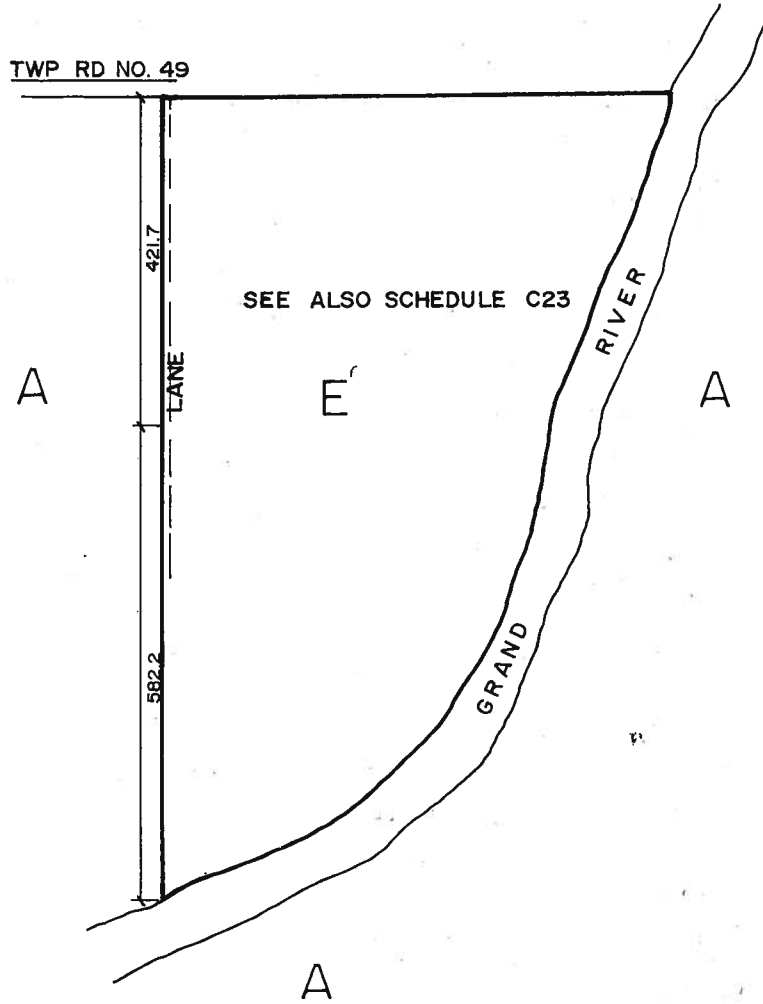
PART LOT 8, G.C.T.



THIS IS SCHEDULE 'A' OF BYLAW _____
PASSED THIS ____ DAY OF _____ 19 ____ . MAYOR

CLERK

PART OF LOT 1
BROKEN FRONT CON. W.G. R.
CROOKS TRACT
TOWNSHIP OF WOOLWICH



SCALE : 1"=7500

SUBJECT LAND OUTLINED = 

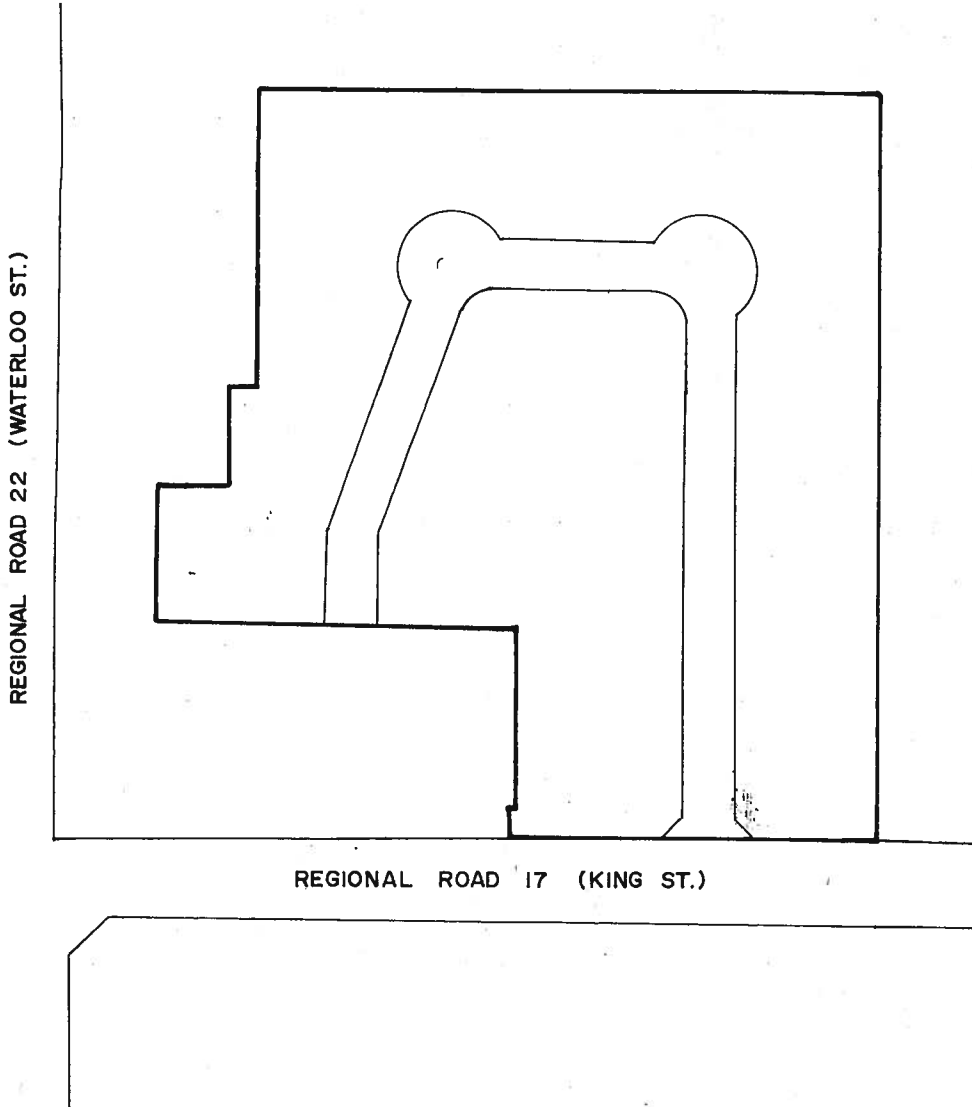
THIS IS SCHEDULE 'A' OF BYLAW _____
PASSED THIS ____ DAY OF _____ 19 ____ . MAYOR

CLERK

PART LOT 31 G.C.T.
TOWNSHIP OF WOOLWICH



SCALE 1"=2500

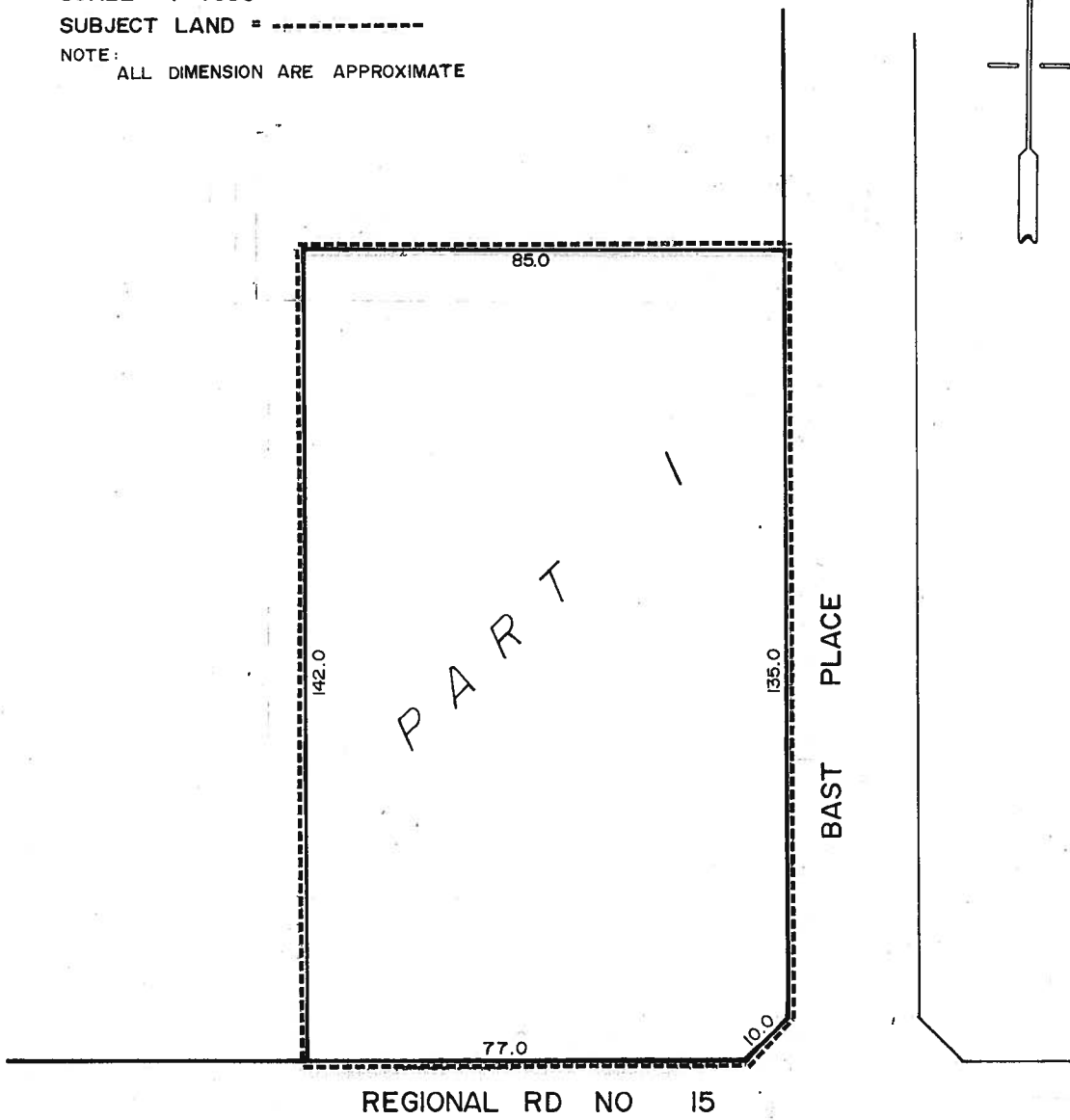
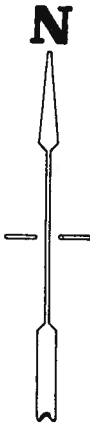


THIS IS SCHEDULE 'A' OF BYLAW _____
PASSED THIS ____ DAY OF _____ 19 ____ . MAYOR

CLERK

TOWNSHIP OF WOOLWICH
PART LOT 10, G.C.T.

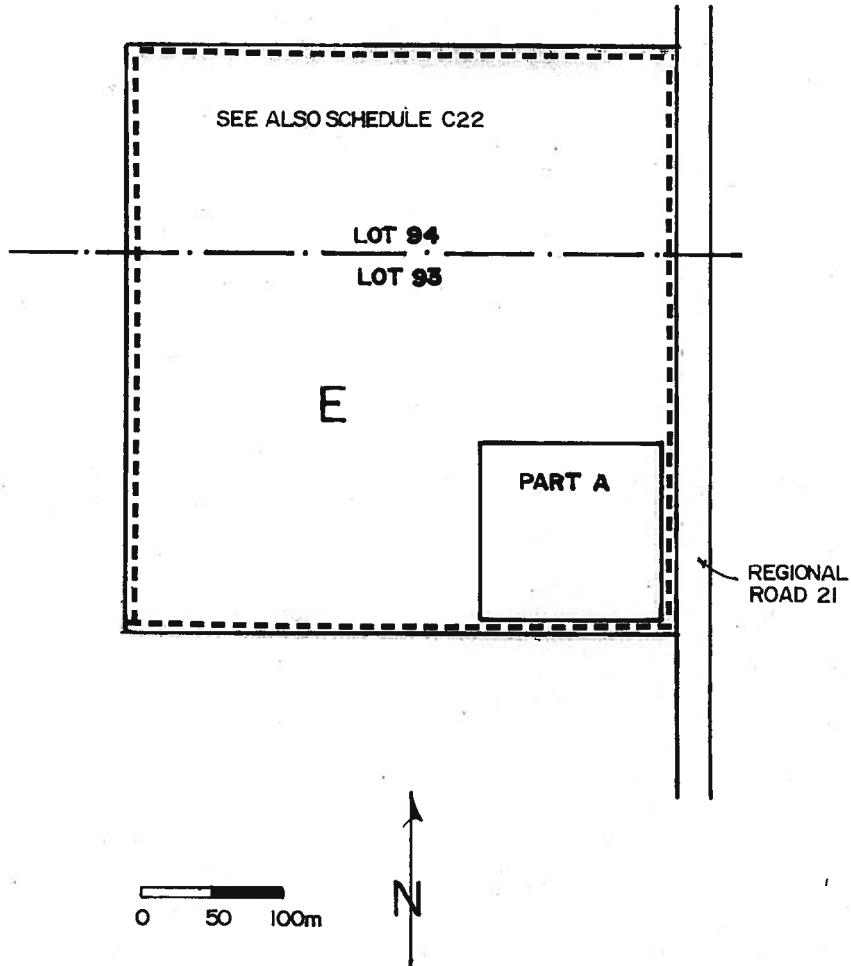
SCALE : 1 = 1000
SUBJECT LAND = -----
NOTE: ALL DIMENSION ARE APPROXIMATE



THIS IS SCHEDULE 'A' OF BYLAW _____
PASSED THIS ____ DAY OF _____ 19 ____ . MAYOR

CLERK

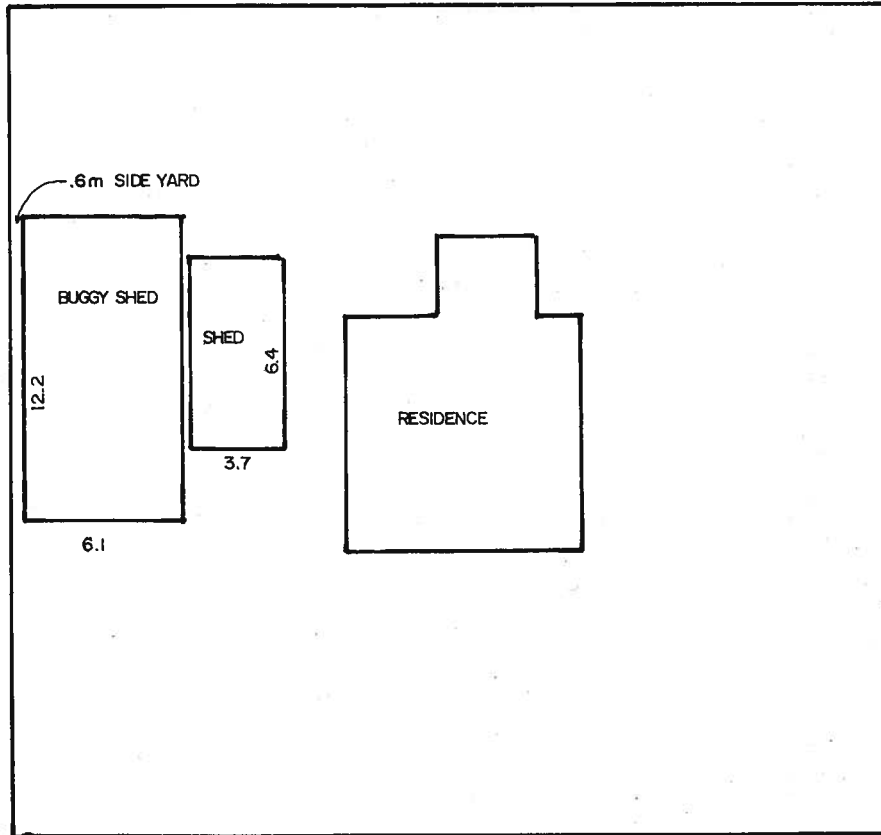
PART LOTS 93 & 94, G.C.T.



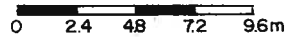
THIS IS SCHEDULE 'A' OF BYLAW _____
PASSED THIS ____ DAY OF _____ 19 ____ . MAYOR

CLERK

PART LOT 78, G.C.T.



TOWNSHIP ROAD 13



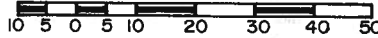
THIS IS SCHEDULE 'A' OF BYLAW _____
PASSED THIS ____ DAY OF _____ 19 ____ . MAYOR

CLERK

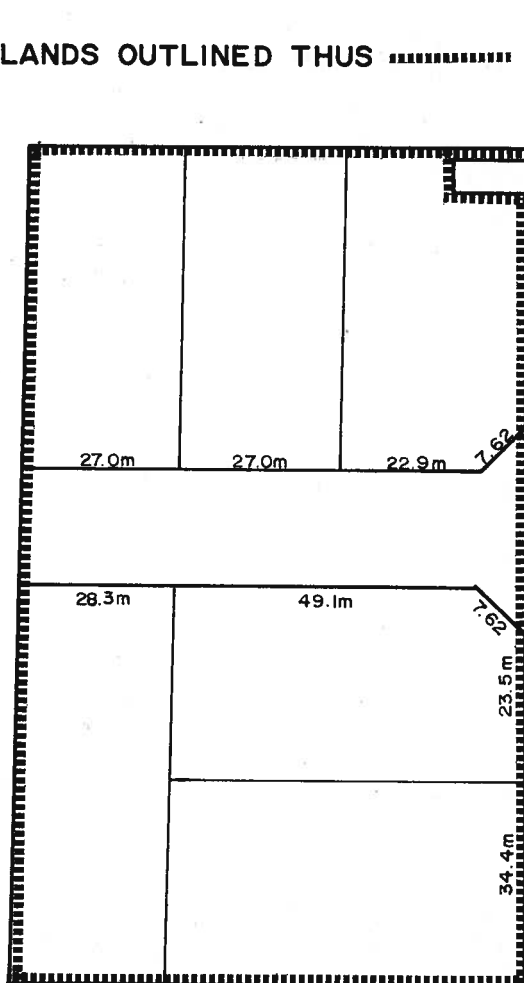
SECTION 26.1.174

PART LOT 31
GERMAN COMPANY TRACT
TOWNSHIP OF WOOLWICH

SCALE: 1:1000



SUBJECT LANDS OUTLINED THUS

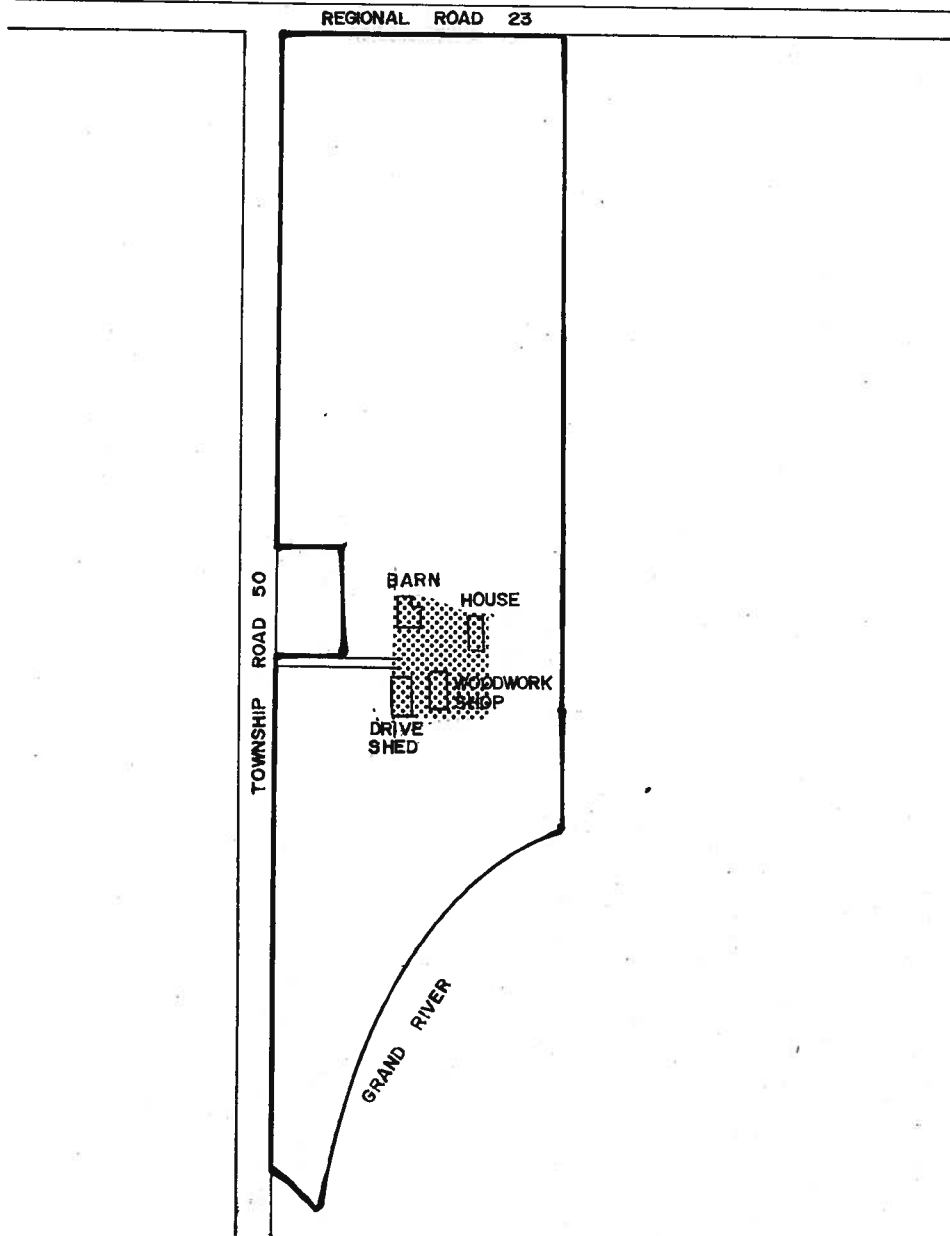


THIS IS SCHEDULE 'A' TO BY-LAW _____
PASSED THIS _____ DAY OF _____, 1991

MAYOR

CLERK

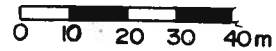
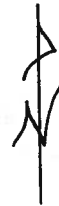
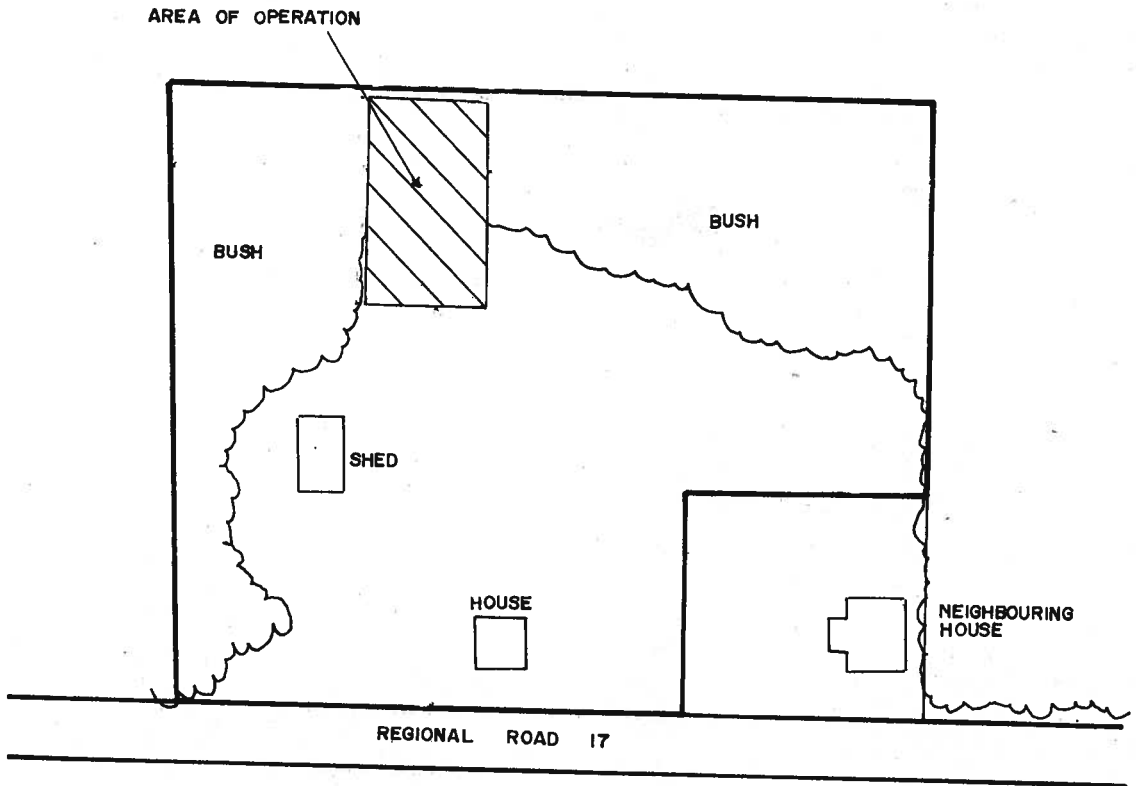
LOT 2 BROKEN FRONT
TOWNSHIP OF WOOLWICH



THIS IS SCHEDULE 'A' OF BYLAW _____
PASSED THIS ____ DAY OF _____ 19 ____ . MAYOR

CLERK

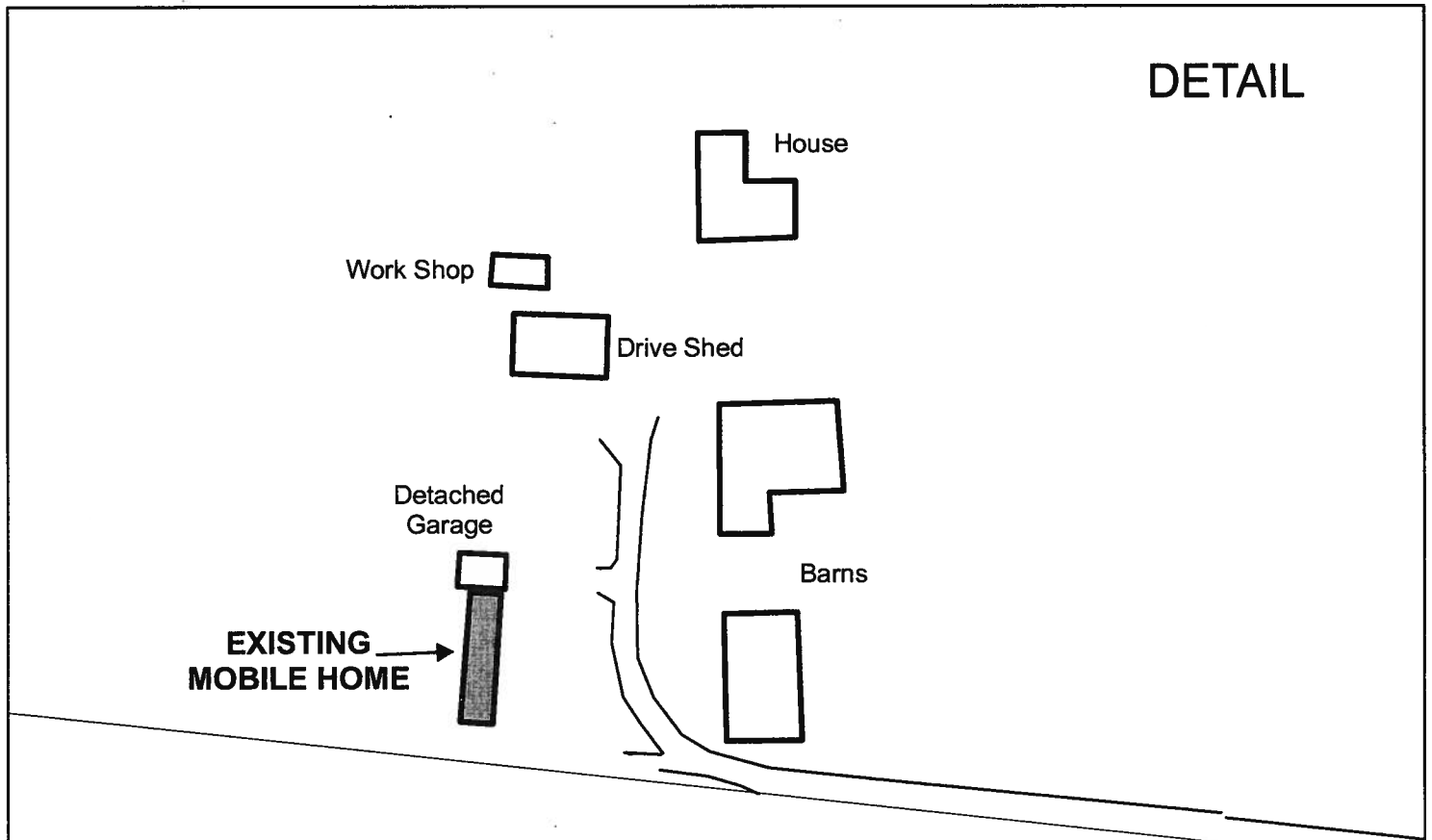
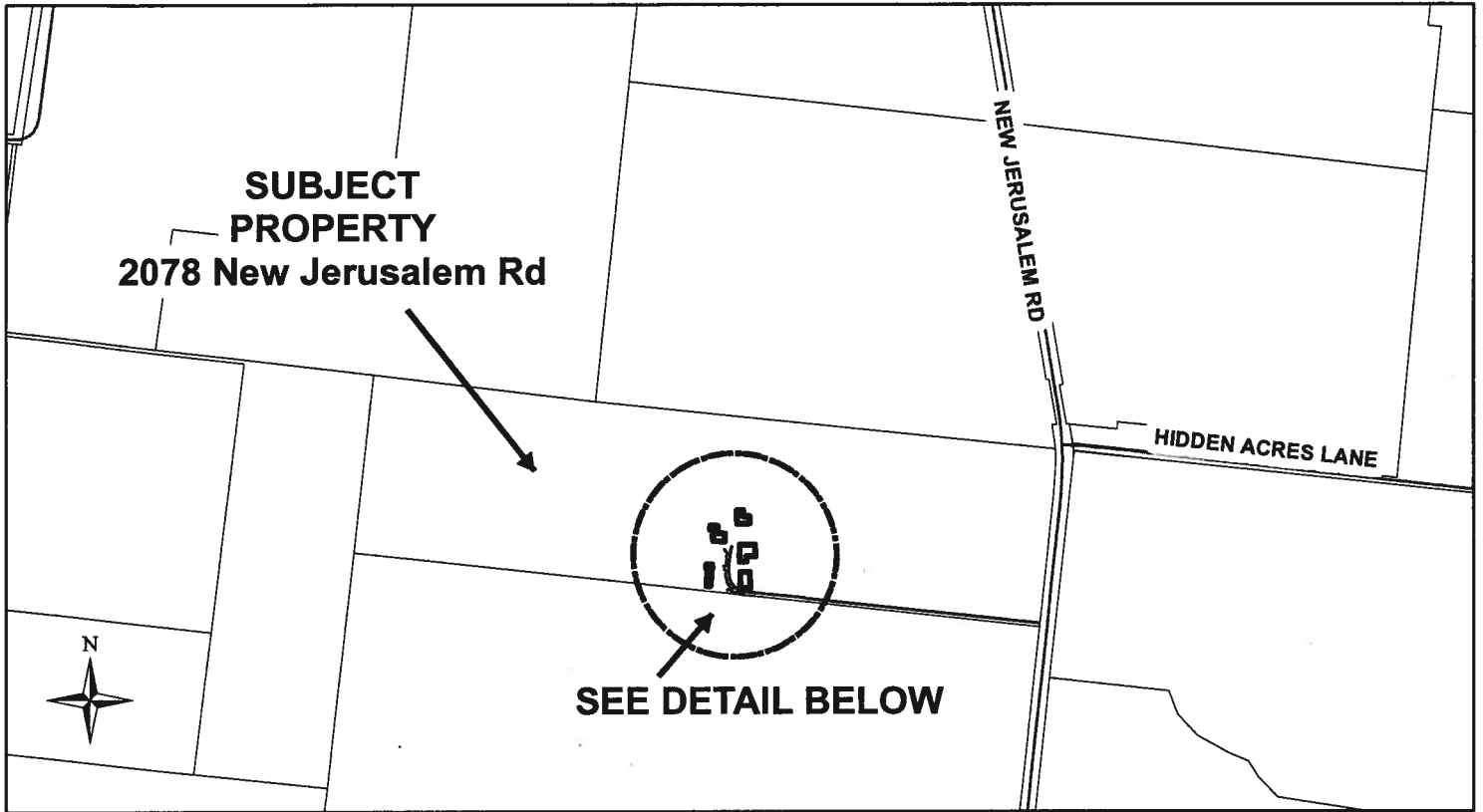
PART LOT 17 G.C.T.
TOWNSHIP OF WOOLWICH



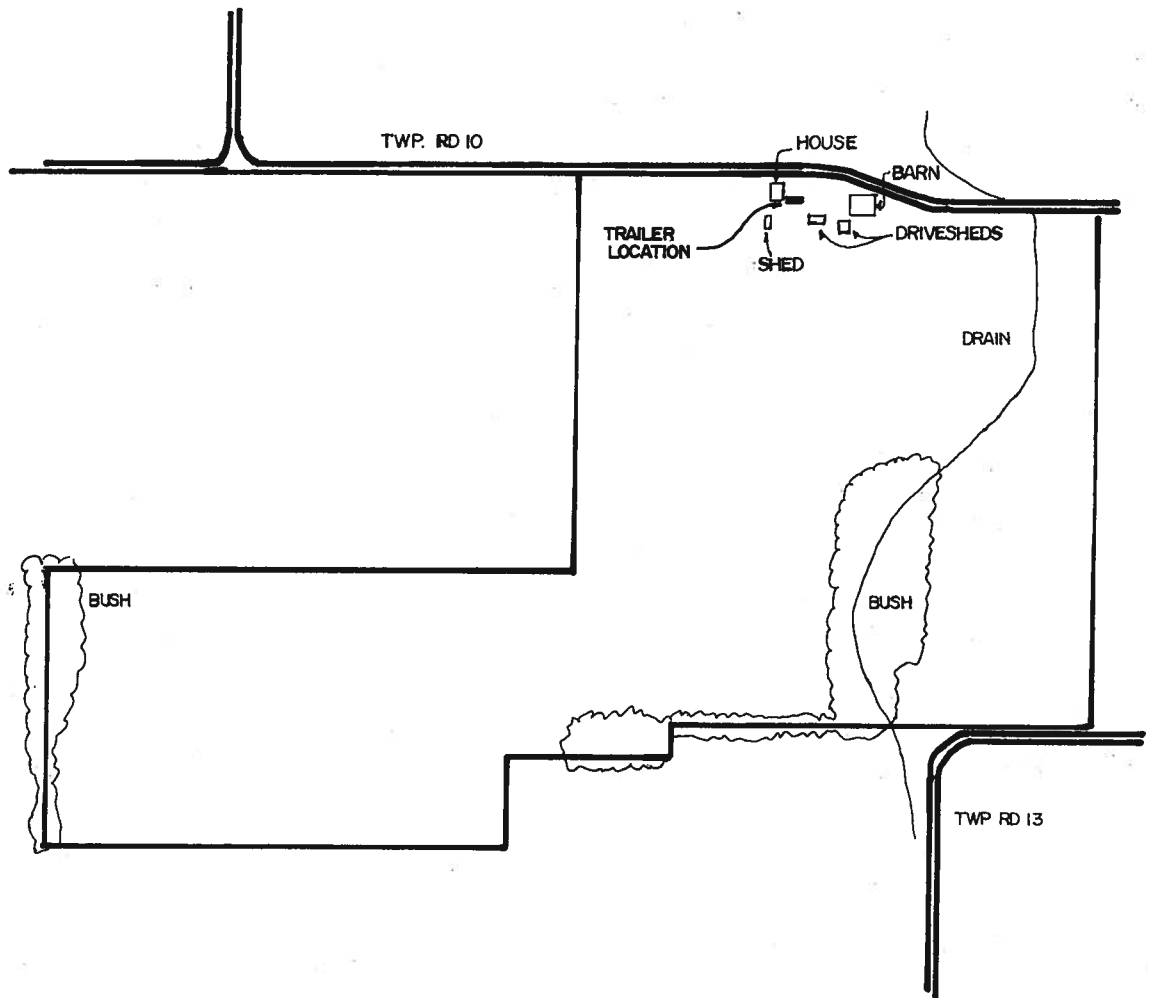
THIS IS SCHEDULE 'A' OF BYLAW _____
PASSED THIS ____ DAY OF _____ 19 ____ . MAYOR

CLERK

Marlin and Virginia Bauman
2078 New Jerusalem Road
GCT Part Lot 44



PART LOTS 78&55,G.C.T.



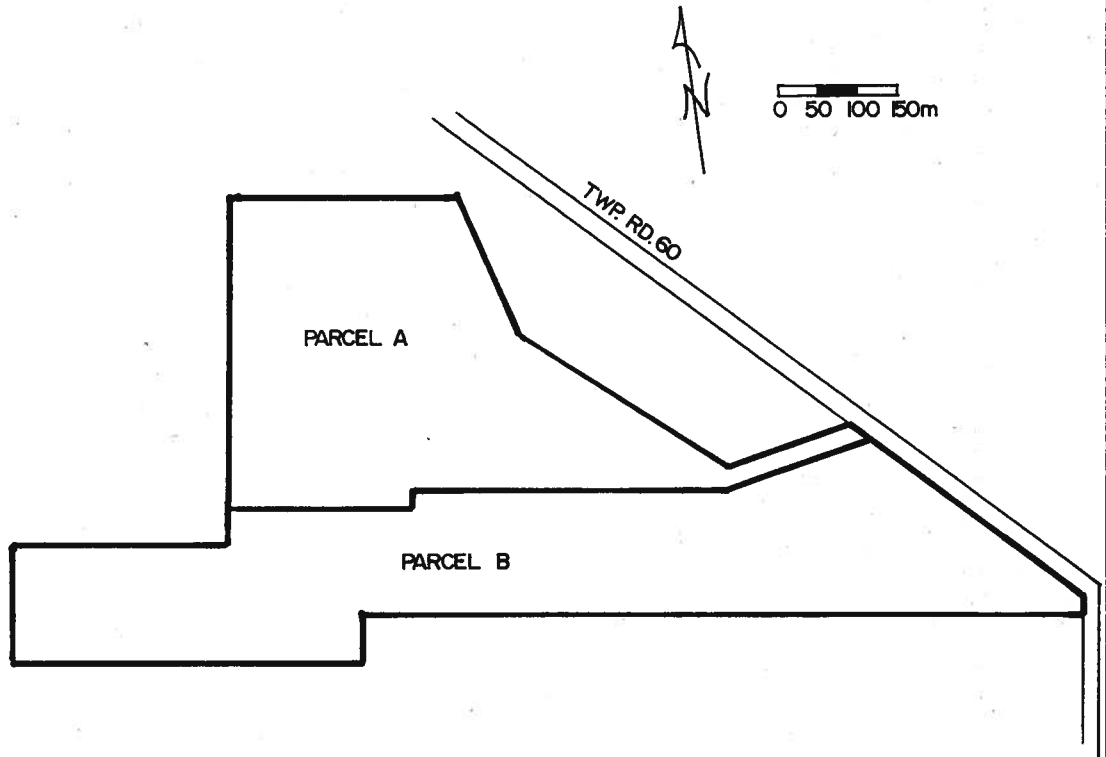
0 50 100m



THIS IS SCHEDULE 'A' OF BYLAW _____
PASSED THIS ____ DAY OF _____ 19 ____ . MAYOR

CLERK

PART LOTS 2 & 3, CONC. 2, BLOCK 3, HITCHING'S TRACT

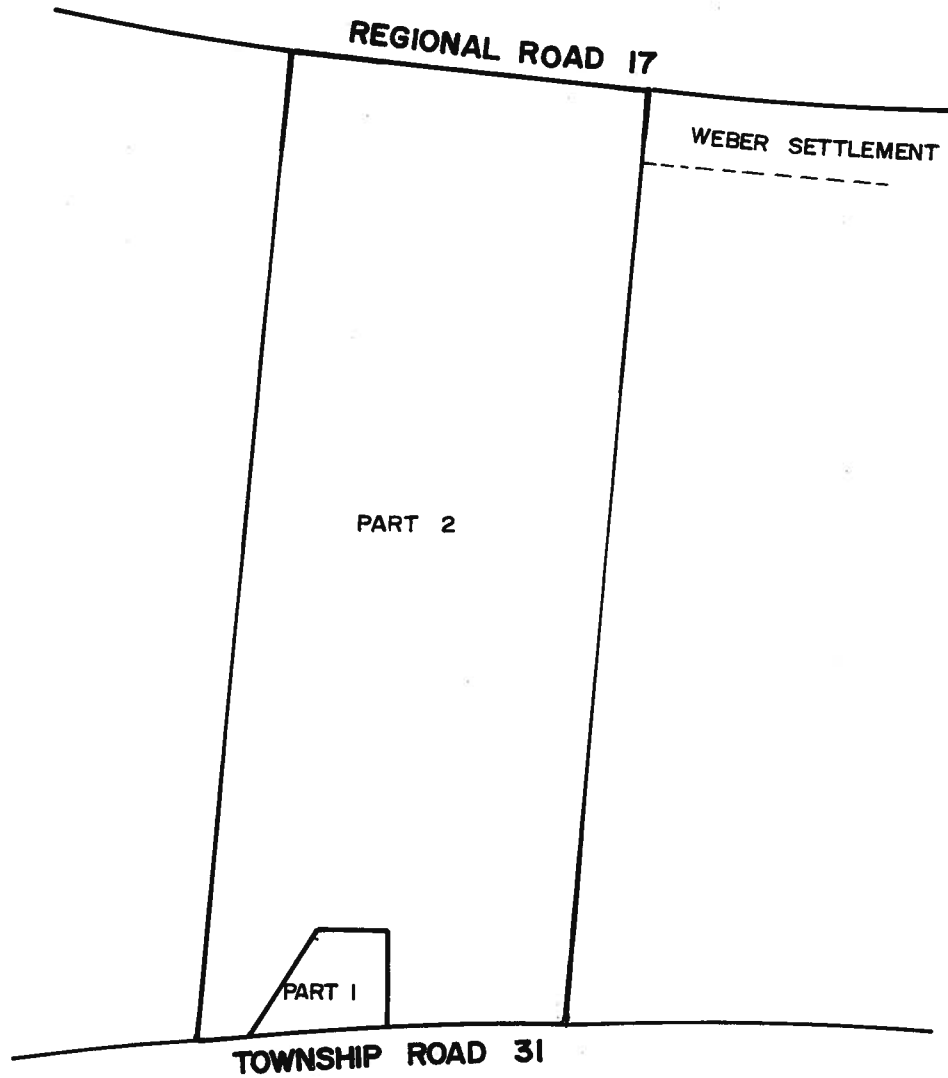


THIS IS SCHEDULE 'A' OF BYLAW _____
PASSED THIS ____ DAY OF _____ 19 ____ . MAYOR

CLERK

PART LOT 33 G.C.T
TOWNSHIP OF WOOLWICH

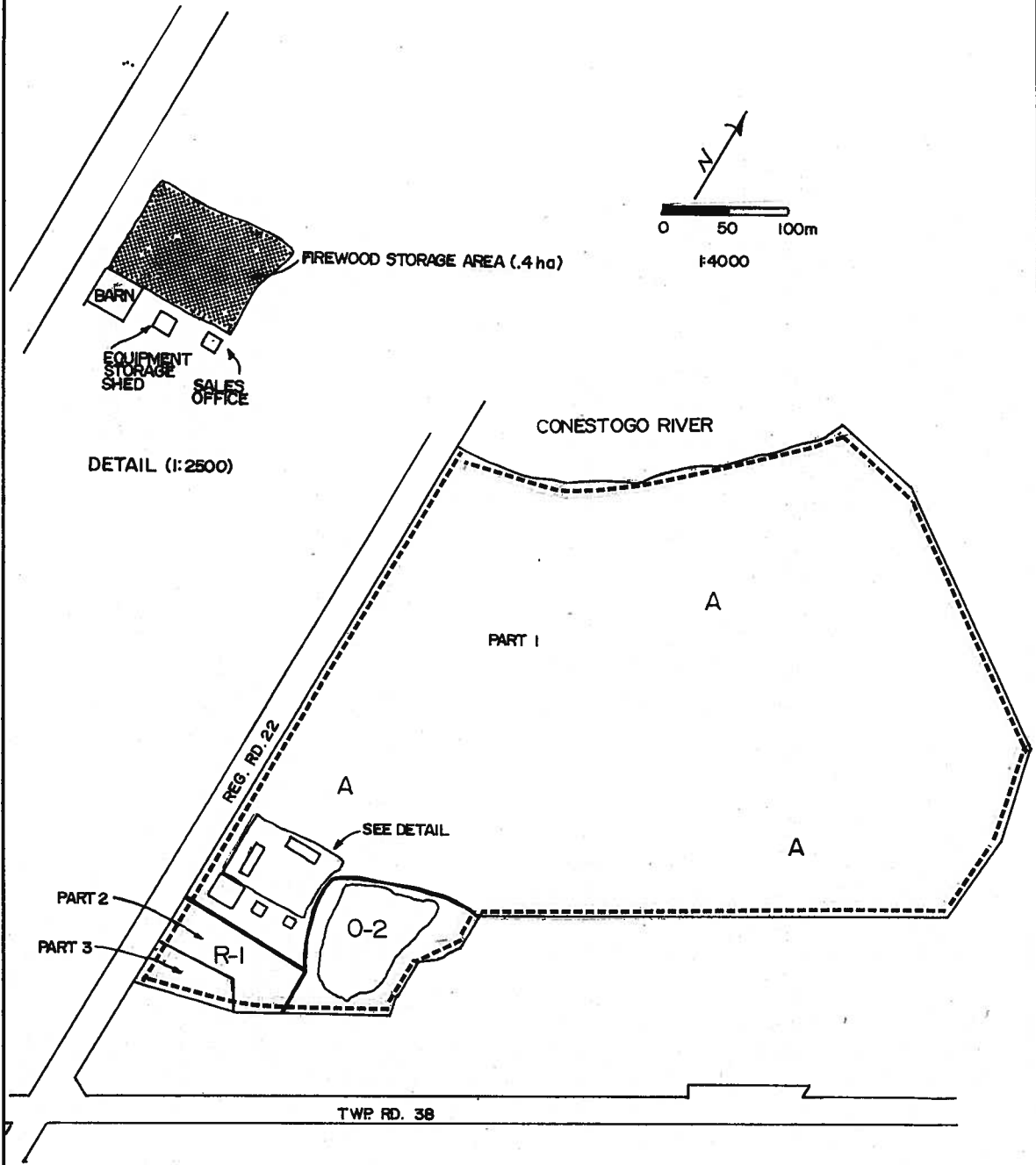
1:5000



THIS IS SCHEDULE 'A' OF BYLAW _____
PASSED THIS ____ DAY OF _____ 19 ____ . MAYOR

CLERK

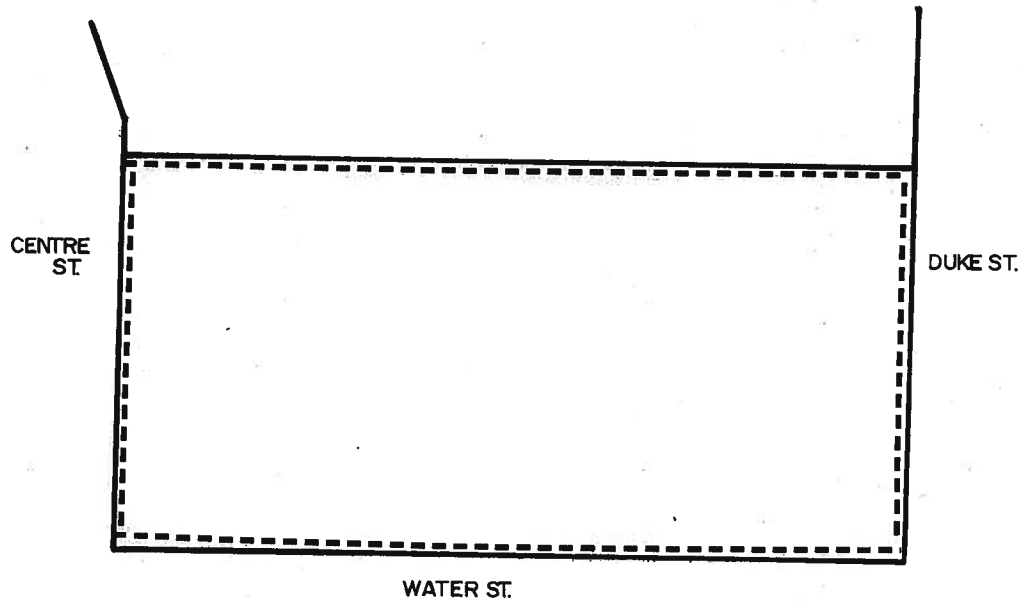
PART LOT 3, G.C.T.



THIS IS SCHEDULE 'A' OF BYLAW _____
PASSED THIS ____ DAY OF _____ 19 ____ . MAYOR

CLERK

LOTS 114, 115, 116 & 117, PLAN 567



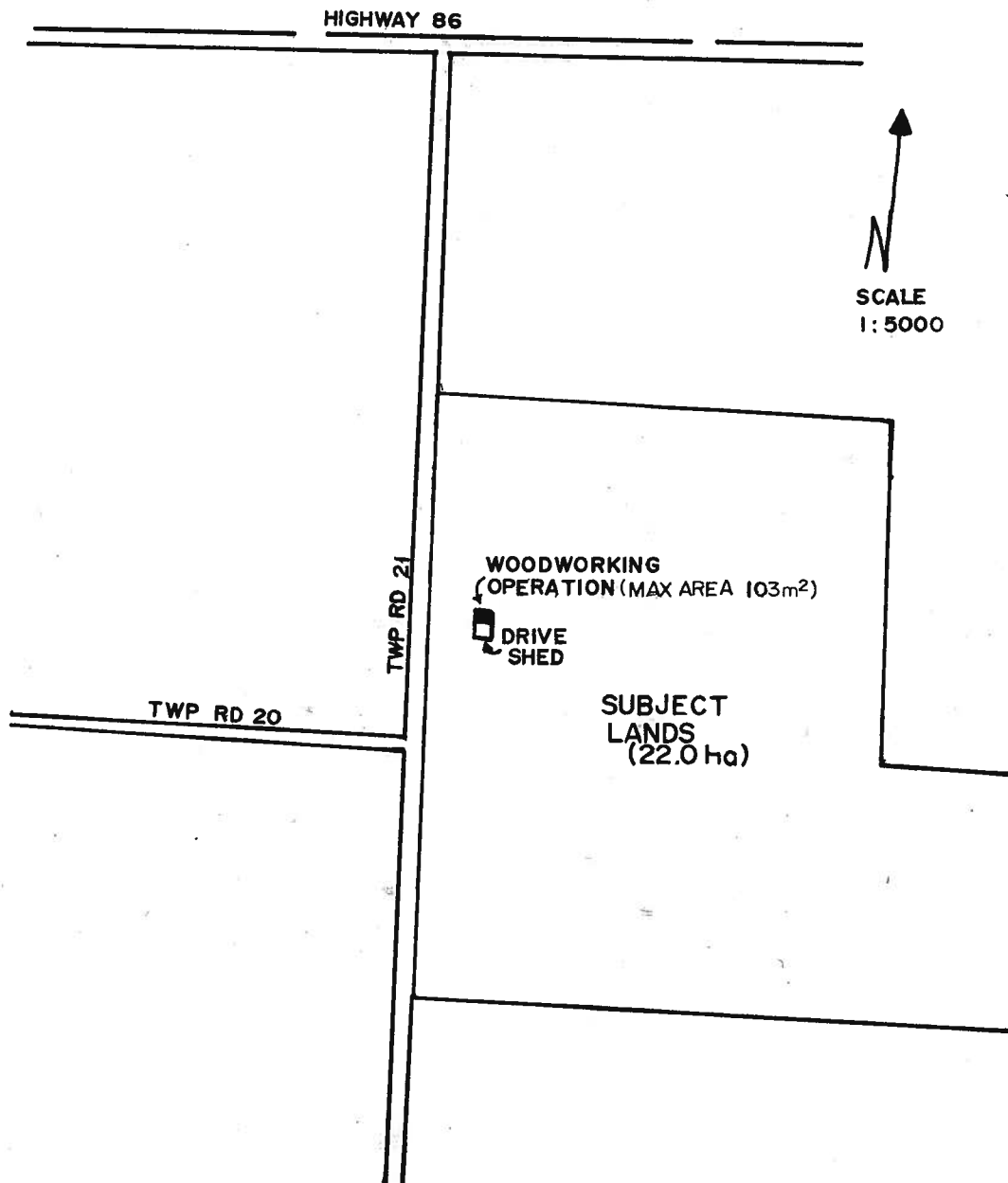
0 5 10m.

SUBJECT LANDS - - - -

THIS IS SCHEDULE 'A' OF BYLAW _____
PASSED THIS ____ DAY OF _____ 19 ____ . MAYOR

CLERK

PART LOTS 108 & 48 G.C.T.
TOWNSHIP OF WOOLWICH



THIS IS SCHEDULE 'A' OF BYLAW _____
PASSED THIS ____ DAY OF _____ 19 ____ . MAYOR

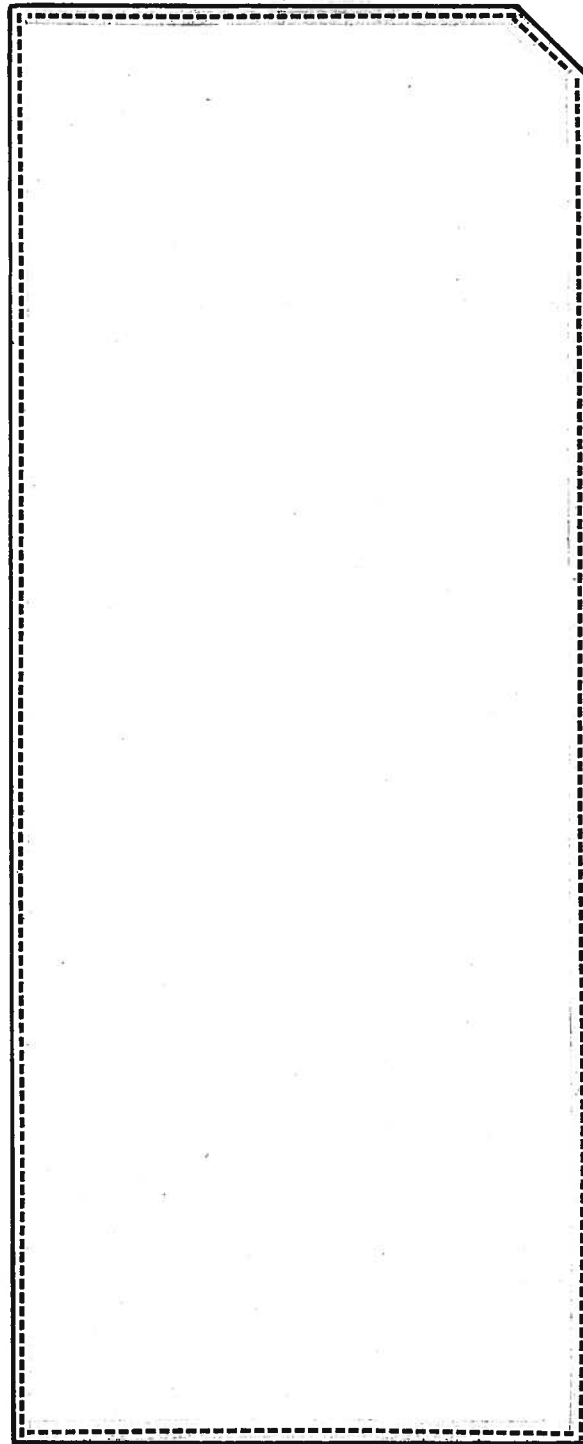
CLERK

SCHEDULE A
Part Lot 107, GCT

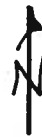
DELETED BY
BY-LAW 5-2015
Southwood 3 - Birdland Developments Limited

PART 1 & PART OF PART 2, 58R4354

ALBERT ST.



WATER ST.



0 7.5m

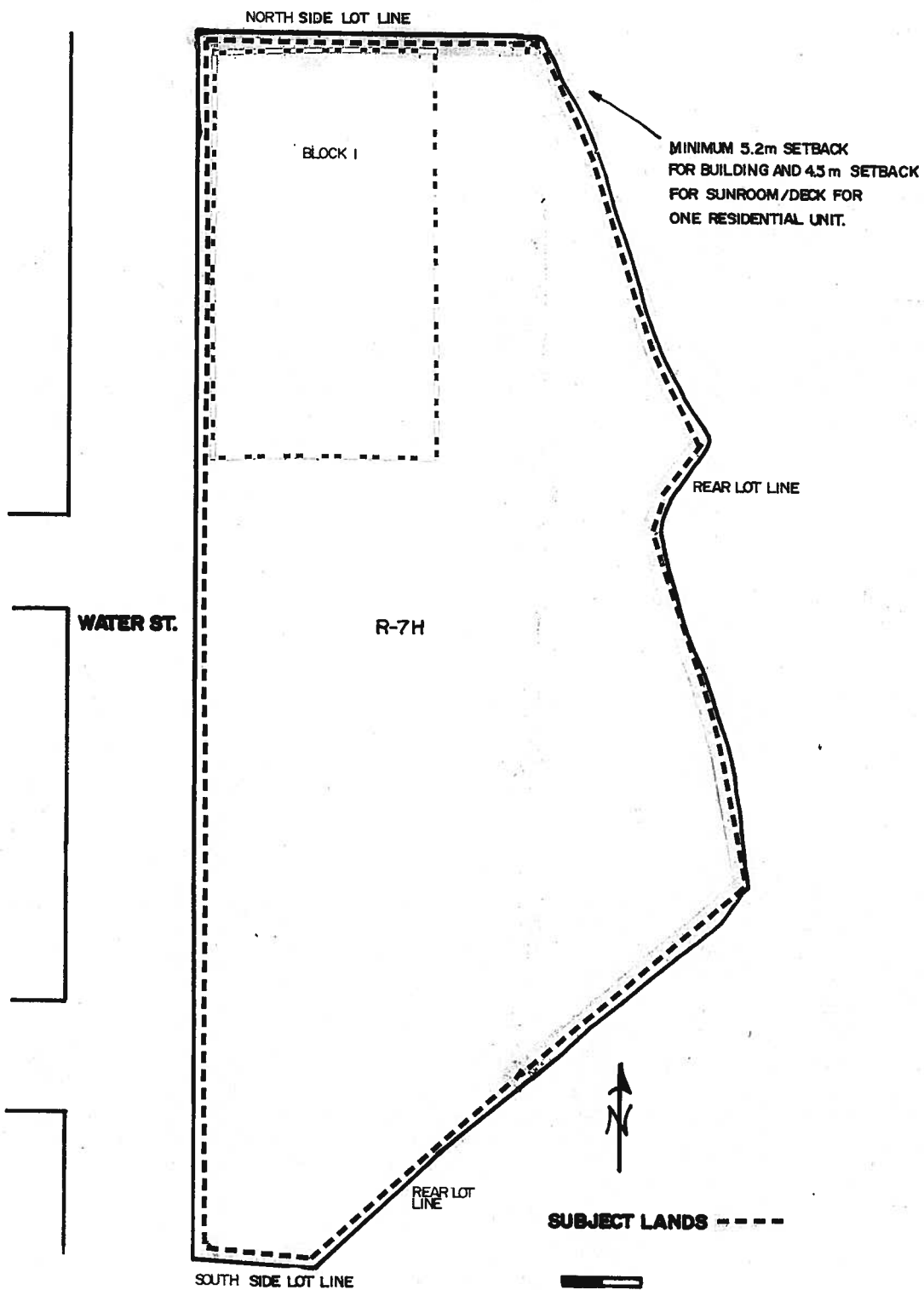
SUBJECT LANDS

THIS IS SCHEDULE 'A' OF BYLAW _____

PASSED THIS ____ DAY OF _____ 19 ____ . MAYOR

CLERK

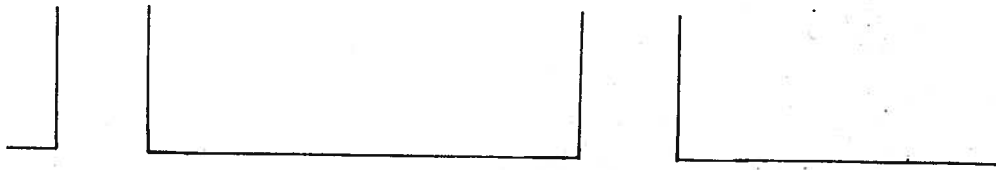
PART LOT 19, PLAN 1501



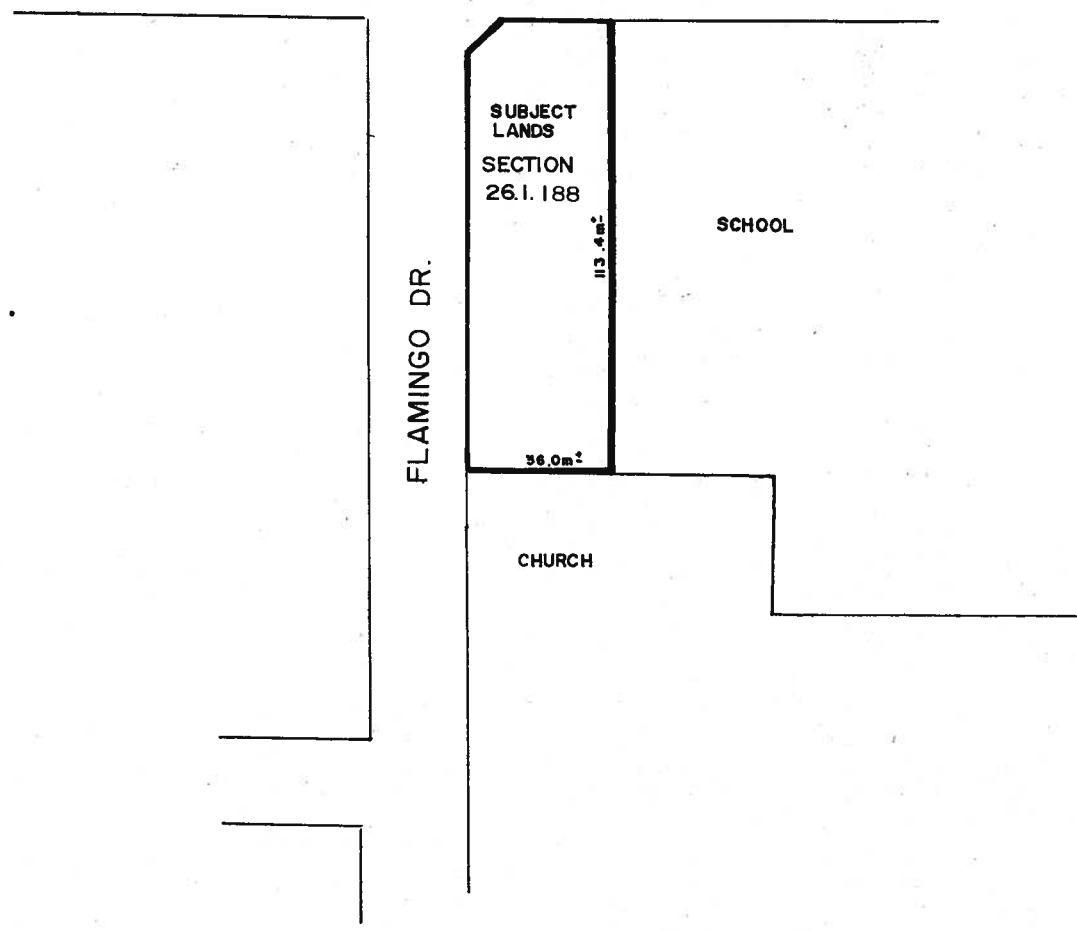
THIS IS SCHEDULE 'A' OF BYLAW _____
PASSED THIS ____ DAY OF _____ 19 ____ . MAYOR

CLERK

PART LOT 121 PLAN 1364
TOWNSHIP OF WOOLWICH



FIRST ST.



SUBJECT
LANDS
SECTION
26.1.188

SCHOOL

FLAMINGO DR.

CHURCH

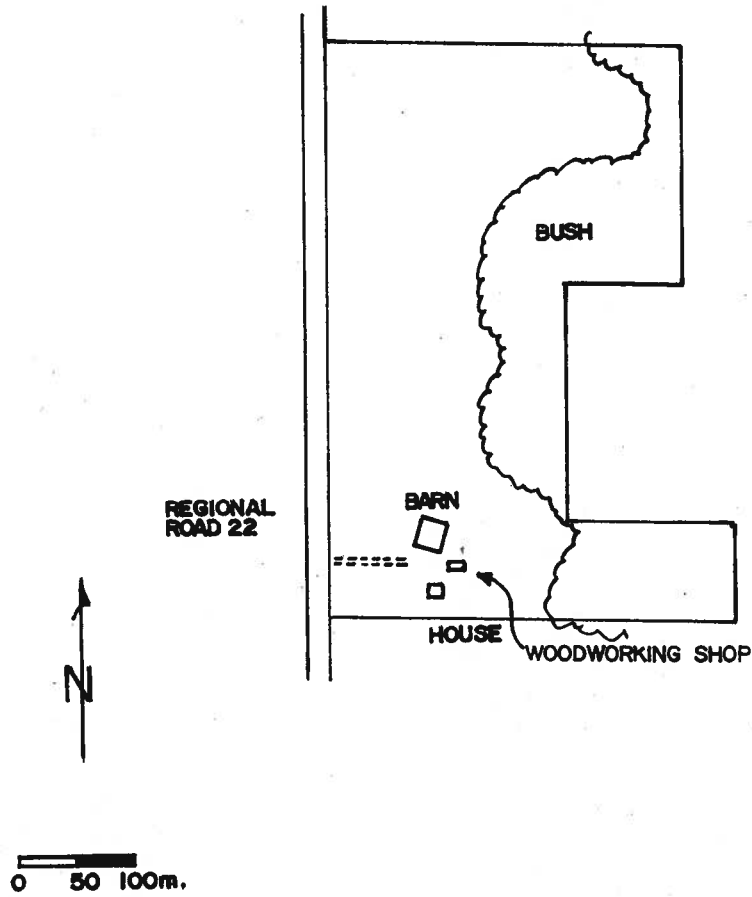
113.4m

36.0m

THIS IS SCHEDULE 'A' OF BYLAW _____
PASSED THIS ____ DAY OF _____ 19 ____ . MAYOR

CLERK

PART LOT 57, G.C.T.

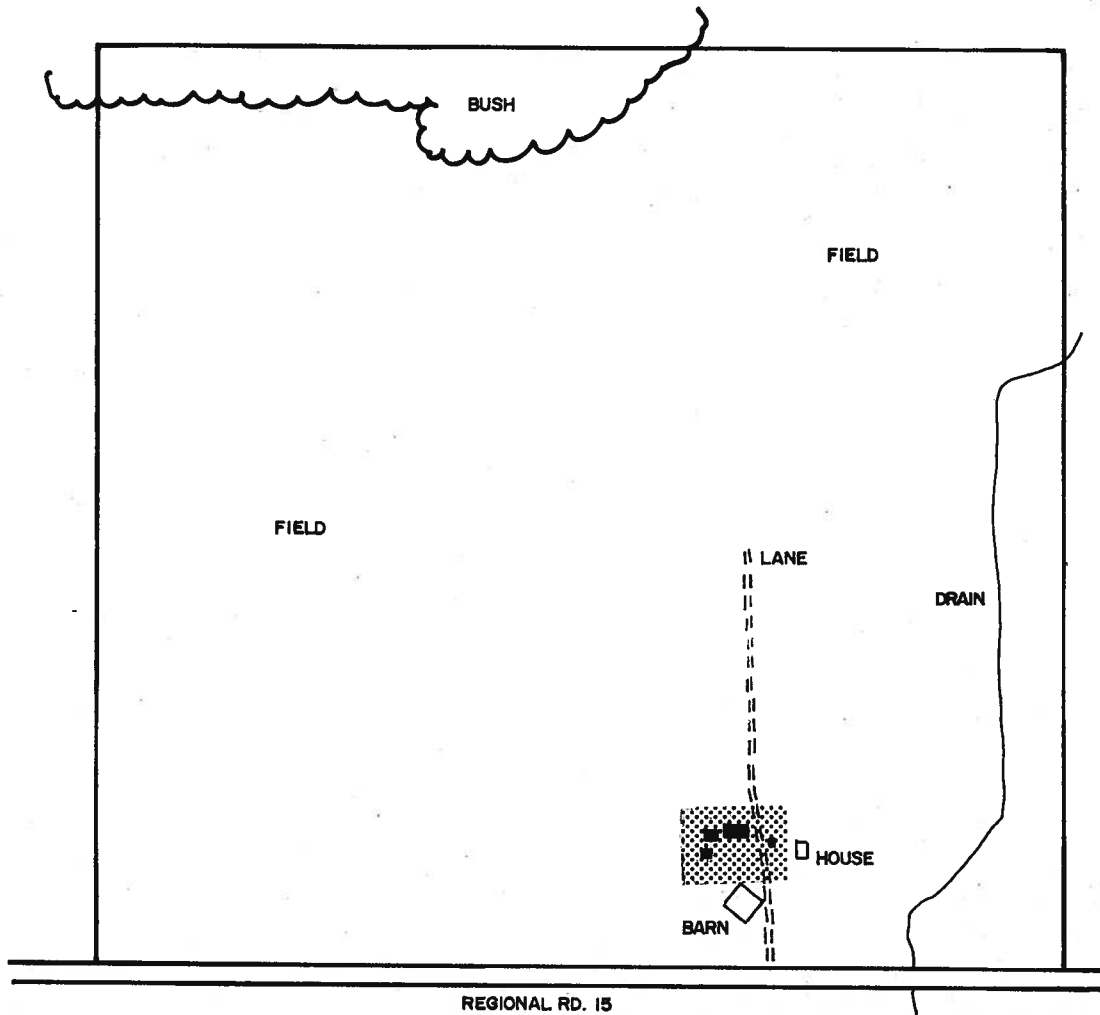


THIS IS SCHEDULE 'A' OF BYLAW _____
PASSED THIS ____ DAY OF _____ 19__ . MAYOR

CLERK

Map 26.1.190 Deleted

PART LOT 13, G.C.T.

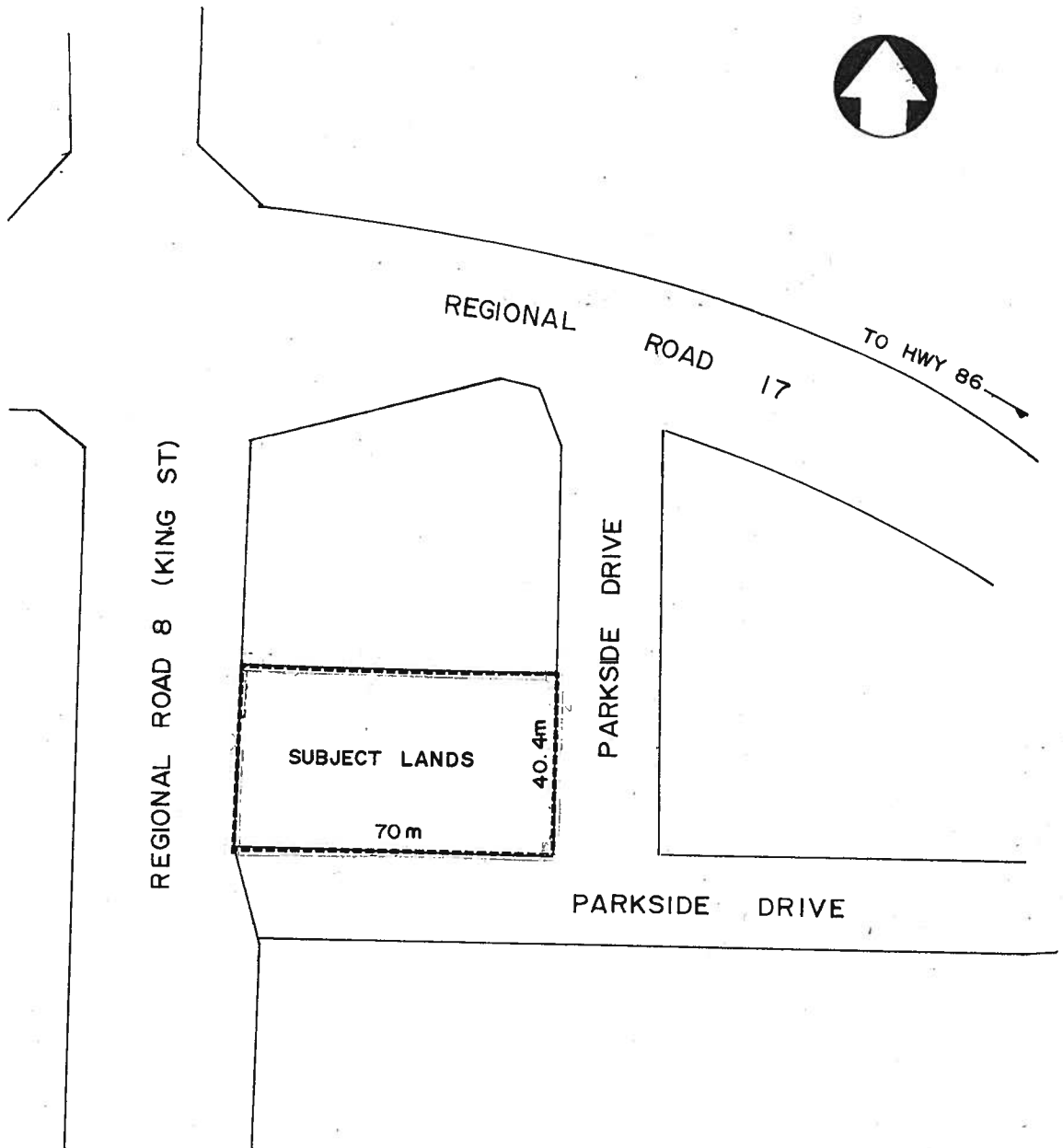


EXISTING SHEDS ■
AREA WITHIN WHICH
WOODWORKING SHOP
MAY BE LOCATED ▨

THIS IS SCHEDULE 'A' OF BYLAW _____
PASSED THIS ____ DAY OF _____ 19 ____ . MAYOR

CLERK

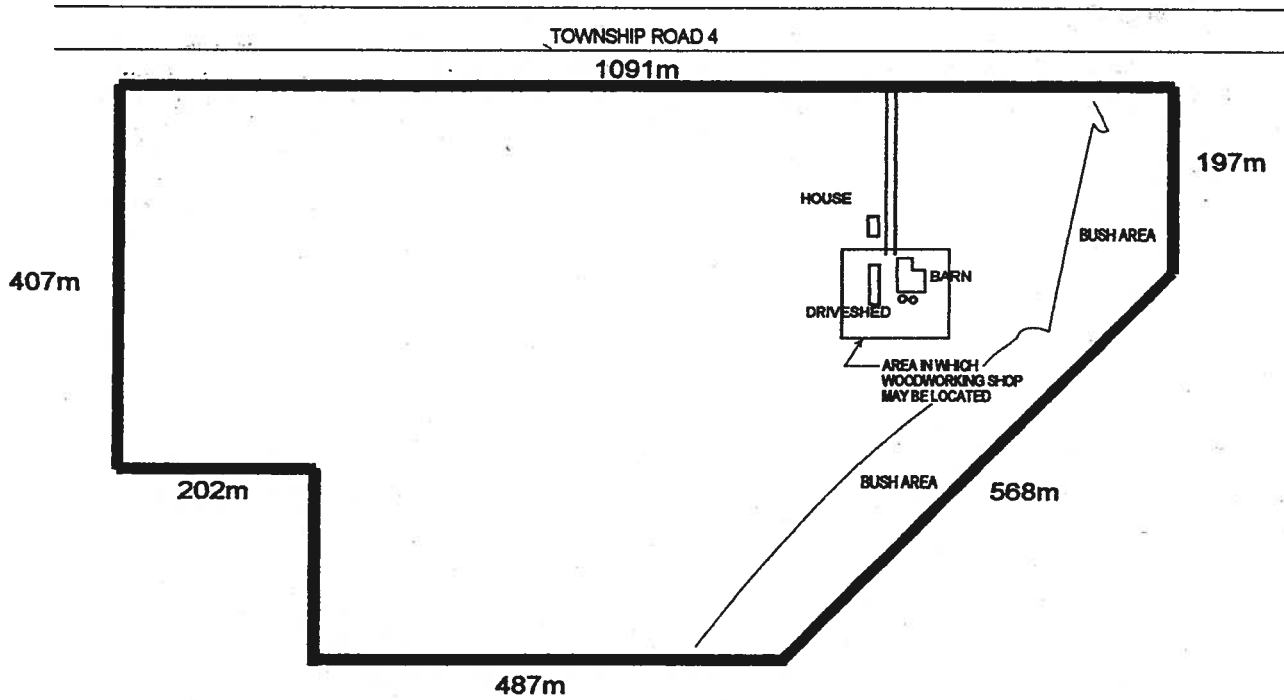
PART LOT 26 PLAN 1548
TOWNSHIP OF WOOLWICH



THIS IS SCHEDULE 'A' OF BYLAW _____
PASSED THIS ____ DAY OF _____ 19 ____ . MAYOR

CLERK

PART LOT 97, G.C.T.
(FORMER TOWNSHIP OF
WATERLOO, COUNTY OF WATERLOO)



NORTH
↑
APPROXIMATE SCALE 1:8000

THIS IS SCHEDULE "A" TO BY-LAW 46-95,
PASSED THIS 27th DAY OF June, 1995.

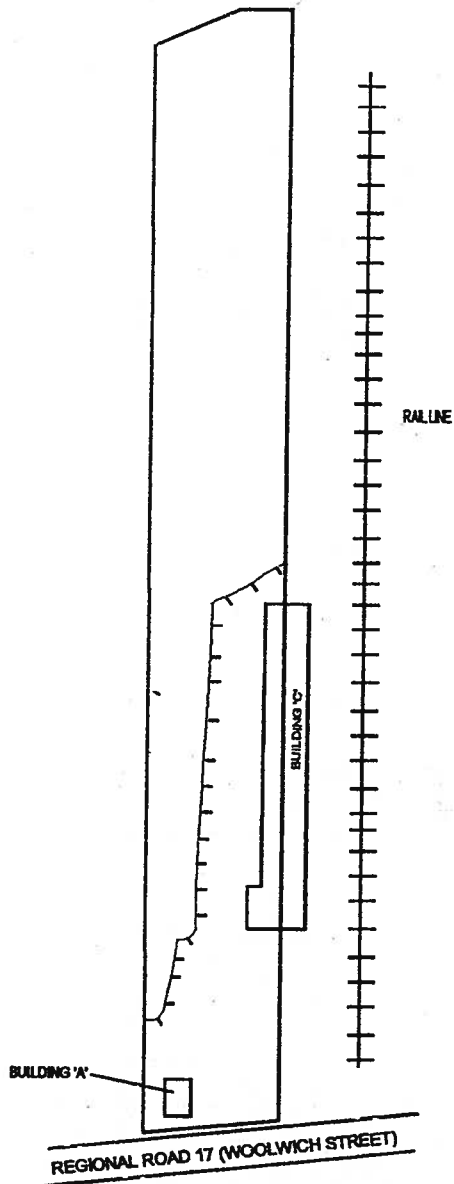
R. P. L.
MAYOR

[Signature]
CLERK

SECTION 26.1.193

PART LOT 114, G.C.T.
FORMER TOWNSHIP OF WATERLOO,
COUNTY OF WATERLOO

NORTH →
APPROXIMATE SCALE 1:1800

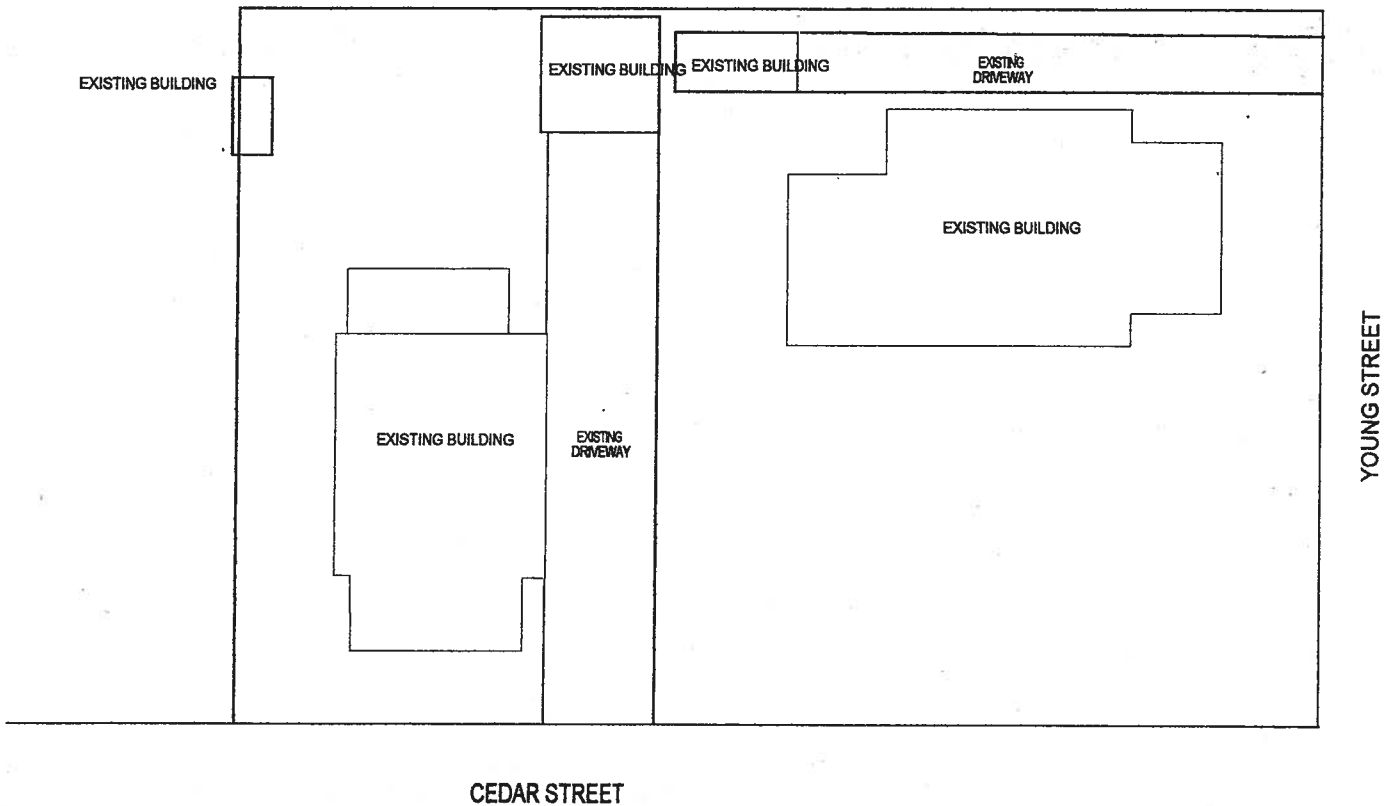


THIS IS SCHEDULE 'A' OF BY-LAW-51-95,
PASSED THIS 11th DAY OF July, 1995.

MAYOR

[Handwritten Signature]
CLERK

PART LOT 7, G.C.T.
(FORMER TOWNSHIP OF WOOLWICH,
COUNTY OF WATERLOO)



THIS IS SCHEDULE 'A' OF BY-LAW _____,
PASSED THIS _____ DAY OF _____, 19

_____ MAYOR

_____ CLERK

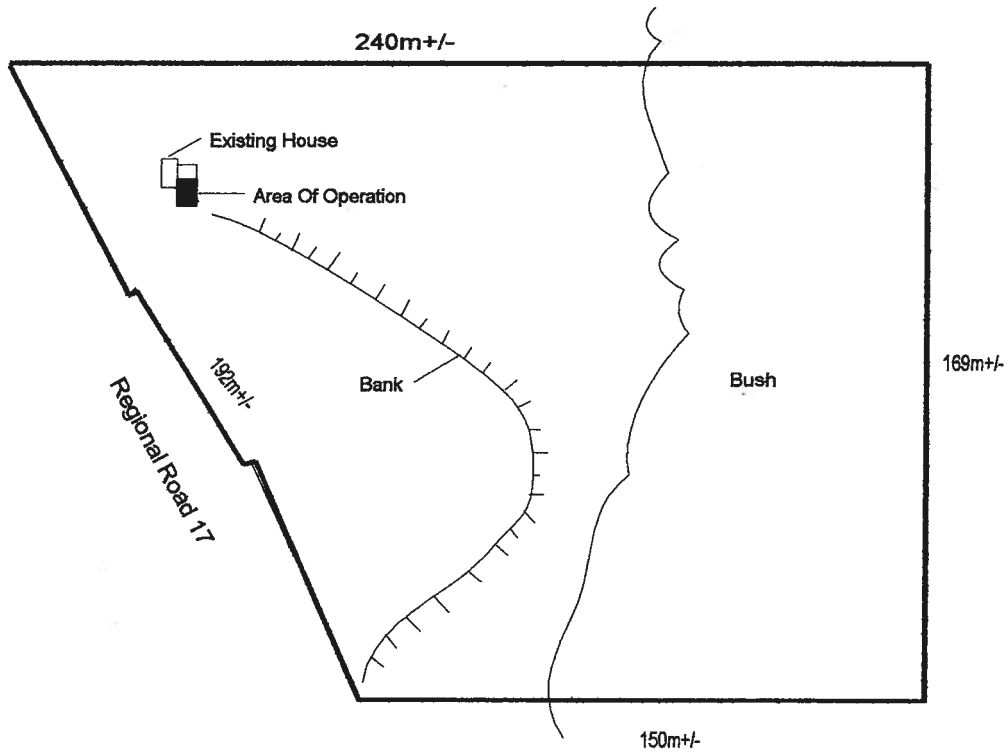
APPROXIMATE SCALE:
1:280



SECTION 26.1.195

Map 26.1.196 Deleted by By-law 94-2000

Part Lot 71, German Company Tract
(Former Township Of Woolwich,
County Of Waterloo)



 SCALE 1:2000

THIS IS SCHEDULE "A" TO BY-LAW _____,
PASSED THIS _____ DAY OF _____, 199_____.

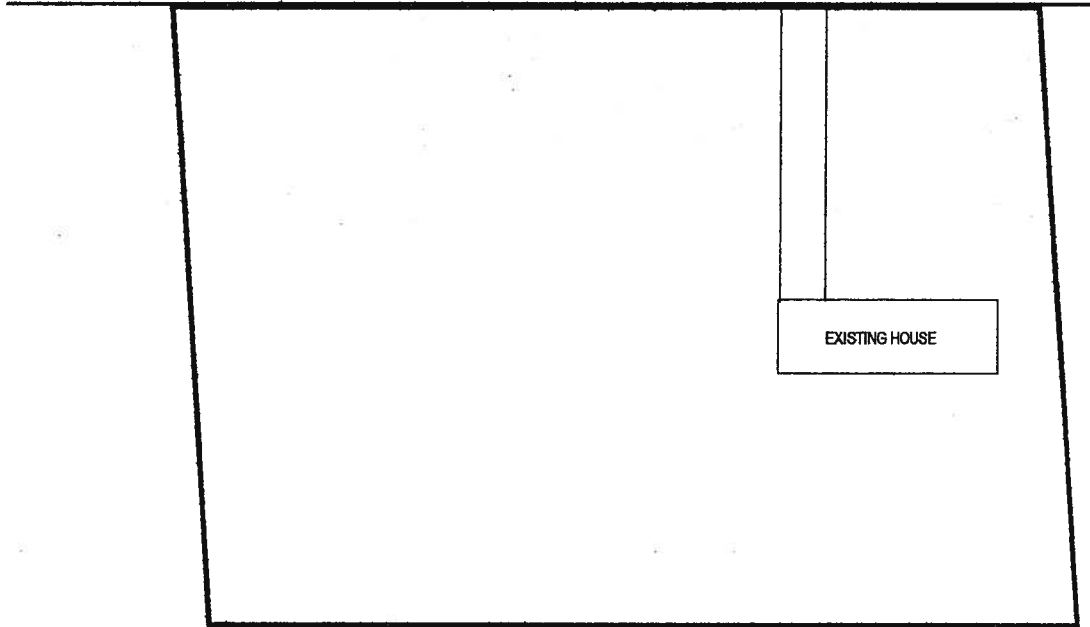
MAYOR

CLERK

SECTION 26.1.197

PART OF LOT 37, G.C.T.
(FORMER TOWNSHIP OF WOOLWICH,
COUNTY OF WATERLOO)

HAWKESVILLE ROAD (REGIONAL ROAD 17)



THIS IS SCHEDULE 'A' TO BY-LAW _____,

PASSED THIS _____ DAY OF _____ 19

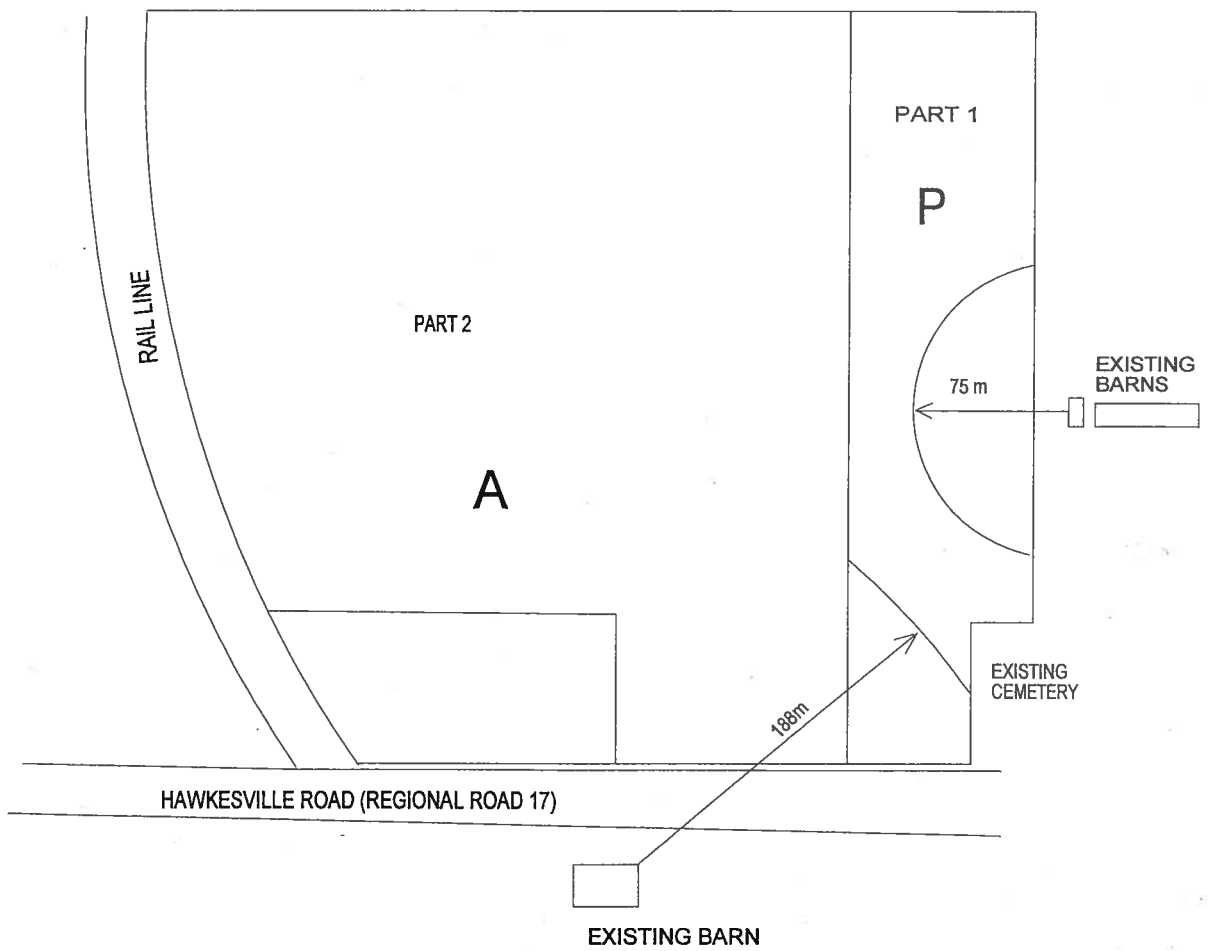
MAYOR

CLERK



APPROXIMATE SCALE
1:900

PART LOT 37, G.C.T.
(FORMER TOWNSHIP OF WOOLWICH,
COUNTY OF WATERLOO)



THIS IS SCHEDULE 'A' OF BY-LAW _____,
PASSED THIS _____ DAY OF _____, 19

_____ MAYOR

_____ CLERK



APPROXIMATE SCALE:
1:3400

SCHEDULE 'A'
PART LOT 89, 1033 KENNING PLACE
(Brad Jackson)

