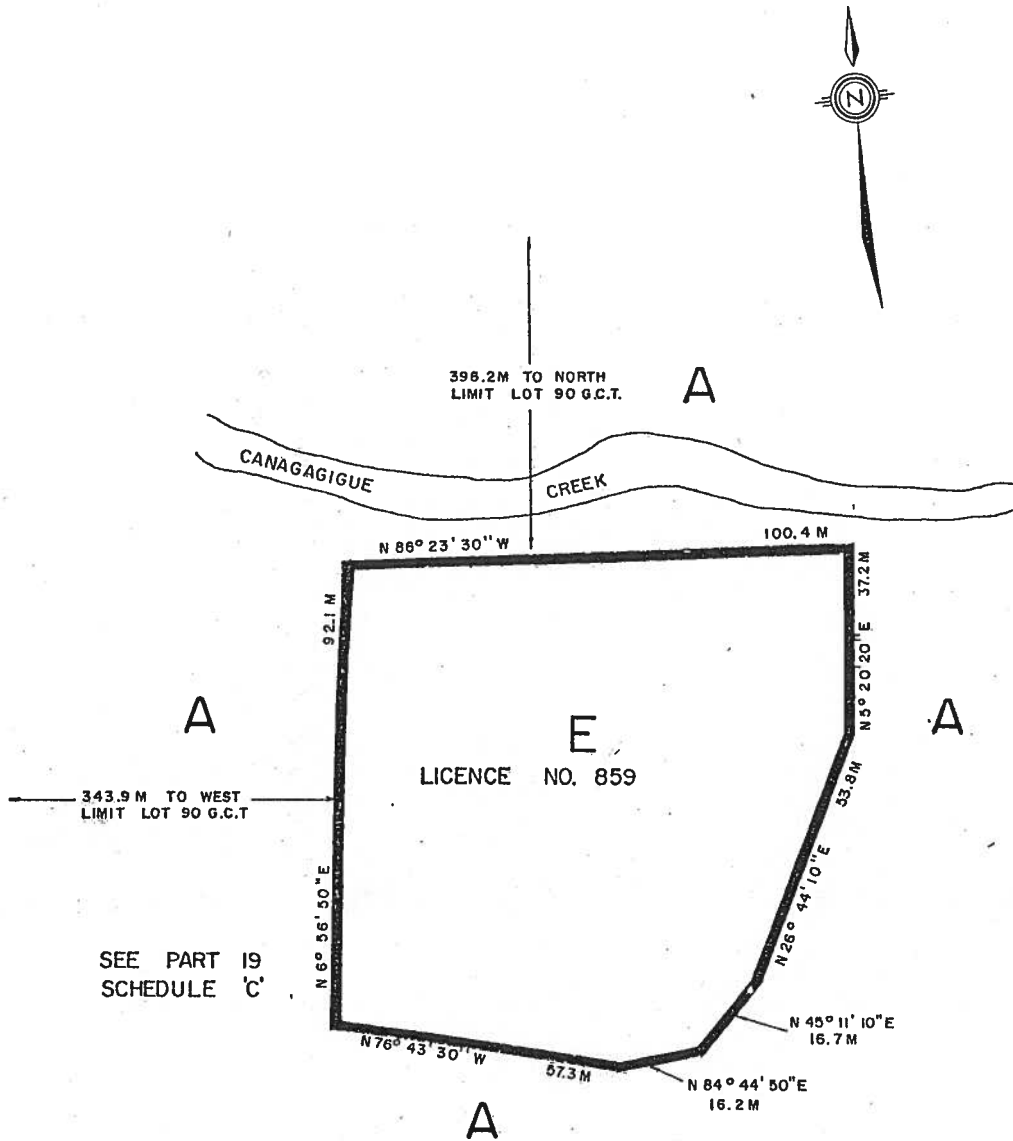


PART OF LOT 90 G.C.T.
TOWNSHIP OF WOOLWICH



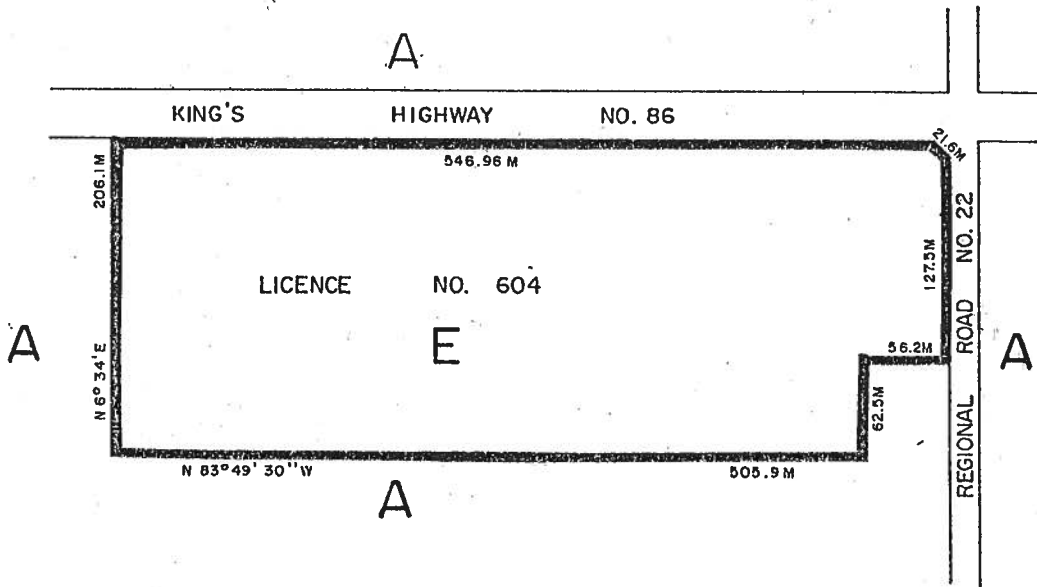
THIS IS PART I OF SCHEDULE 'C' TO BY-LAW _____,
PASSED THIS _____ DAY OF _____, 198 .

MAYOR

CLERK

SCALE : 1 : 1200

PART OF LOT 52 G.C.T.
TOWNSHIP OF WOOLWICH

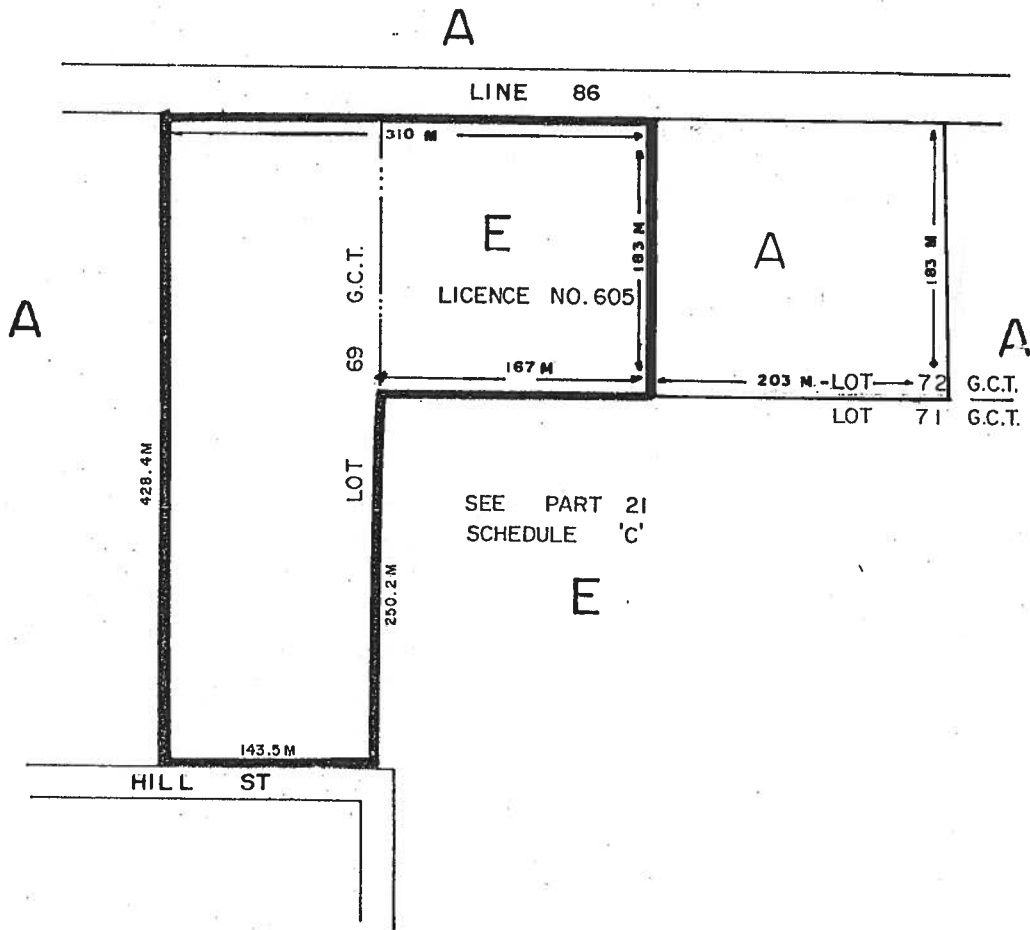


THIS IS PART 2 OF SCHEDULE 'C' TO BY-LAW _____,
PASSED THIS _____ DAY OF _____, 198 .

MAYOR

CLERK

PART OF LOTS 69 G.C.T & 72 G.C.T.
TOWNSHIP OF WOOLWICH

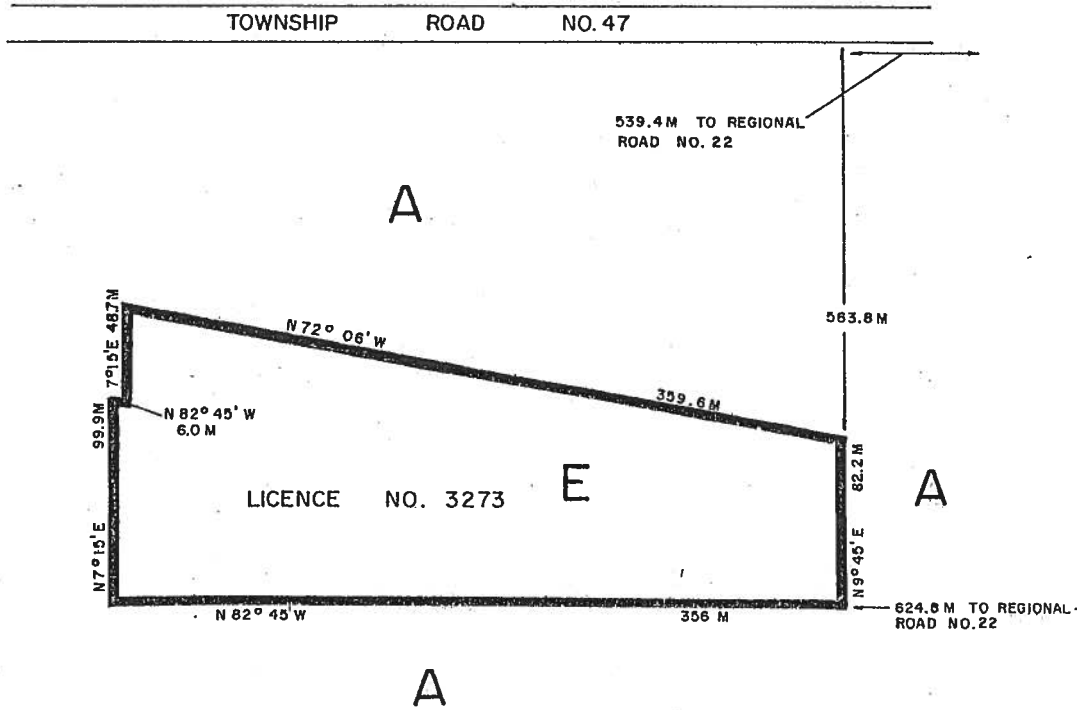


THIS IS PART 3 OF SCHEDULE 'C' TO BY-LAW _____,
PASSED THIS _____ DAY OF _____, 198 .

MAYOR

CLERK

PART OF LOT 28 G.C.T.
TOWNSHIP OF WOOLWICH



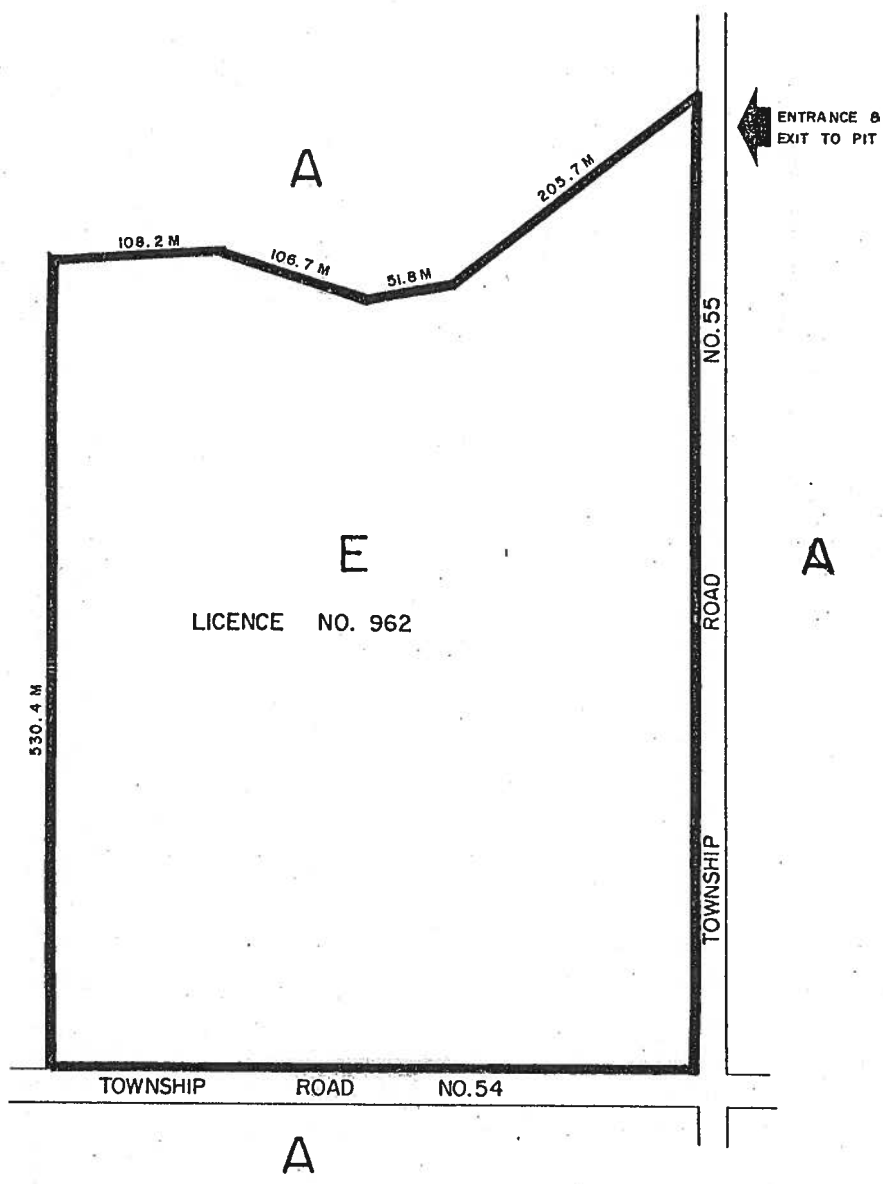
THIS IS PART 4 OF SCHEDULE 'C' TO BY-LAW _____,
PASSED THIS _____ DAY OF _____, 198 .

MAYOR

CLERK

PART OF LOT 129 G.C.T.
TOWNSHIP OF WOOLWICH

03



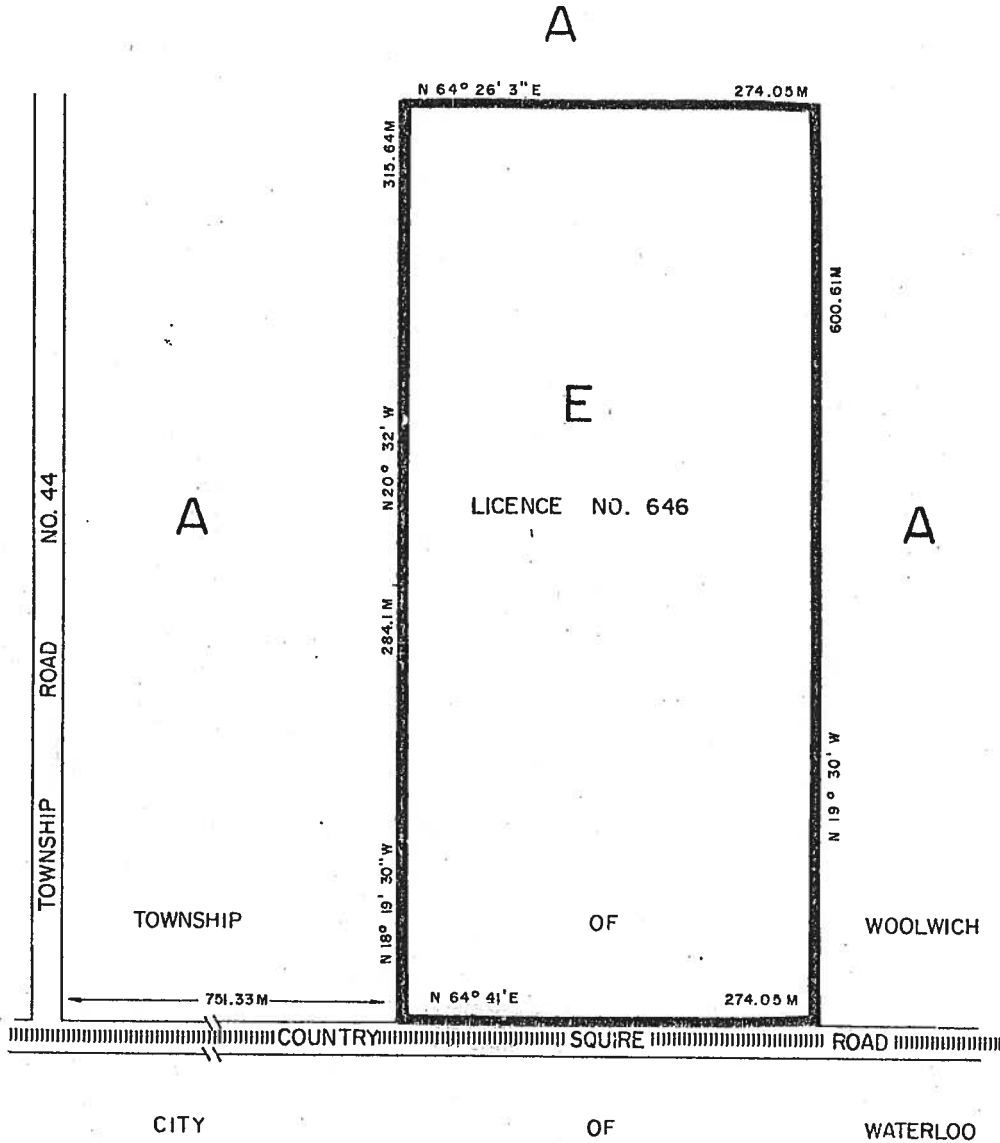
THIS IS PART 5 OF SCHEDULE 'C' TO BY-LAW _____,
PASSED THIS _____ DAY OF _____, 198 .

MAYOR

CLERK

SCALE: 1:4000

PART OF LOT I G.C.T.
TOWNSHIP OF WOOLWICH



THIS IS PART 6 OF SCHEDULE 'C' TO BY-LAW _____,
PASSED THIS _____ DAY OF _____, 198 .

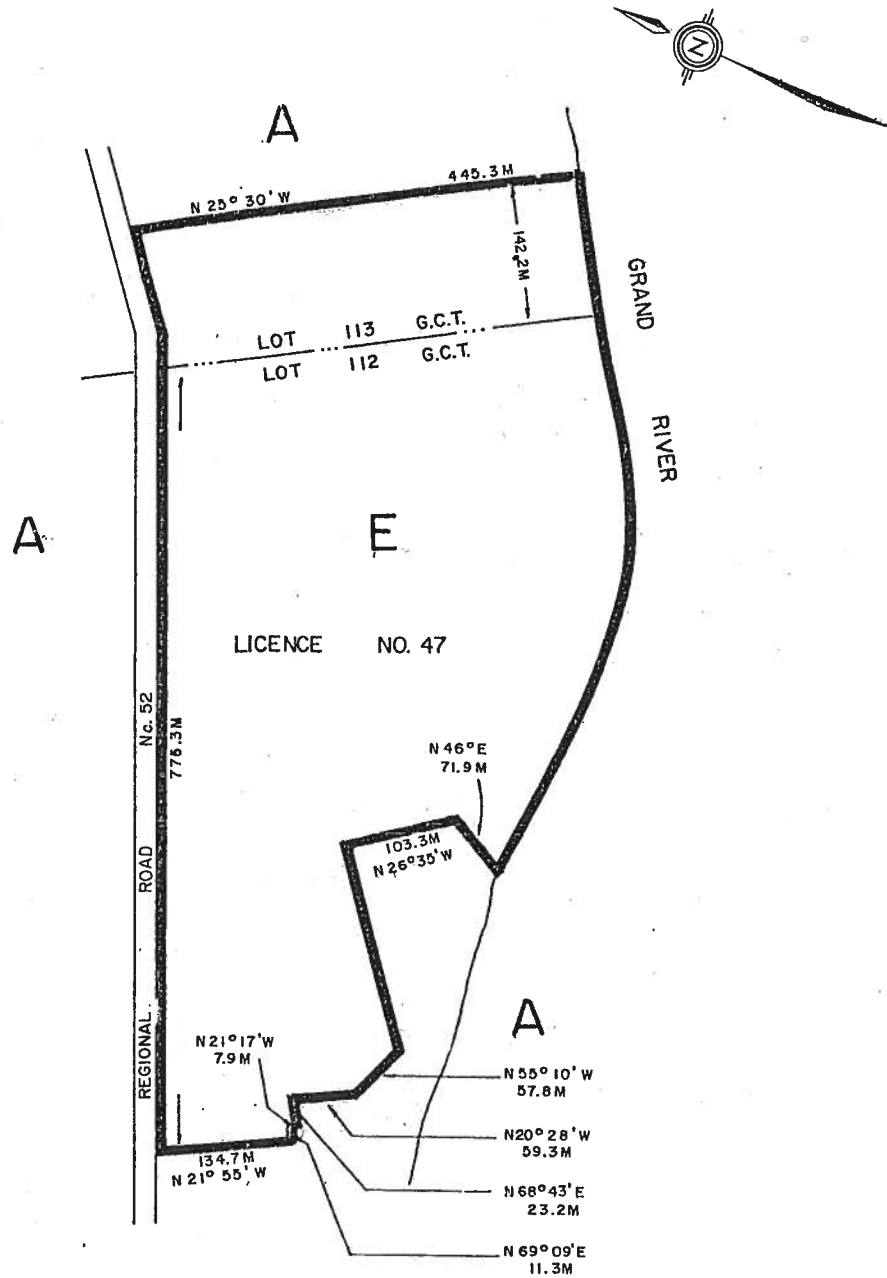
MAYOR

CLERK

SCHEDULE C7 – DELETED

By-law 83-2006 passed November 28, 2006 (General Amendment)

PART OF LOTS 112 G.C.T. & 113 G.C.T. TOWNSHIP OF WOOLWICH



THIS IS PART B OF SCHEDULE 'C' TO BY-LAW _____,
PASSED THIS _____ DAY OF _____, 198 _____.

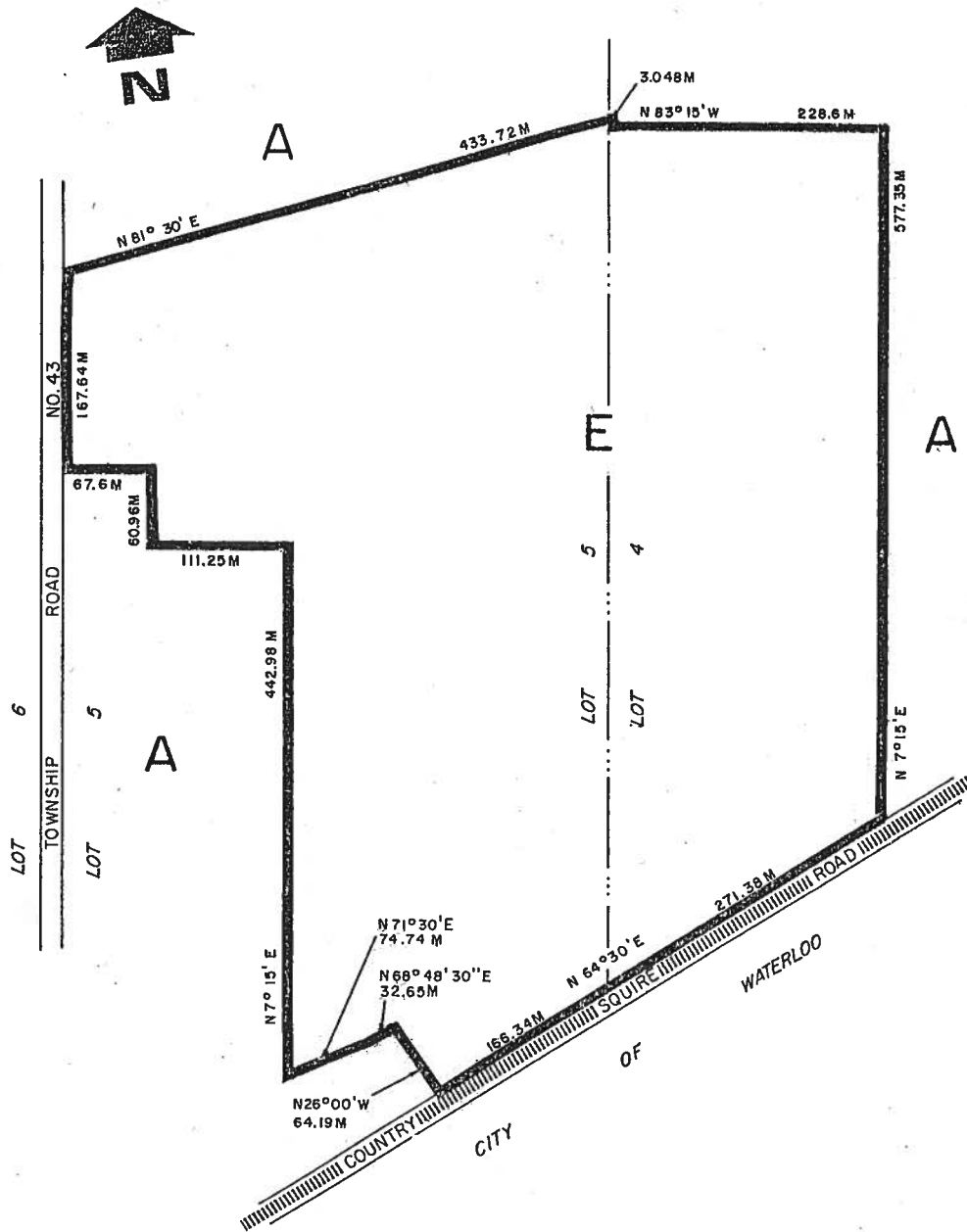
MAYOR

CLERK

SCHEDULE C9 – DELETED

By-law 83-2006 passed November 28, 2006 (General Amendment)

PART OF LOTS 4 & 5 G.C.T. TOWNSHIP OF WOOLWICH

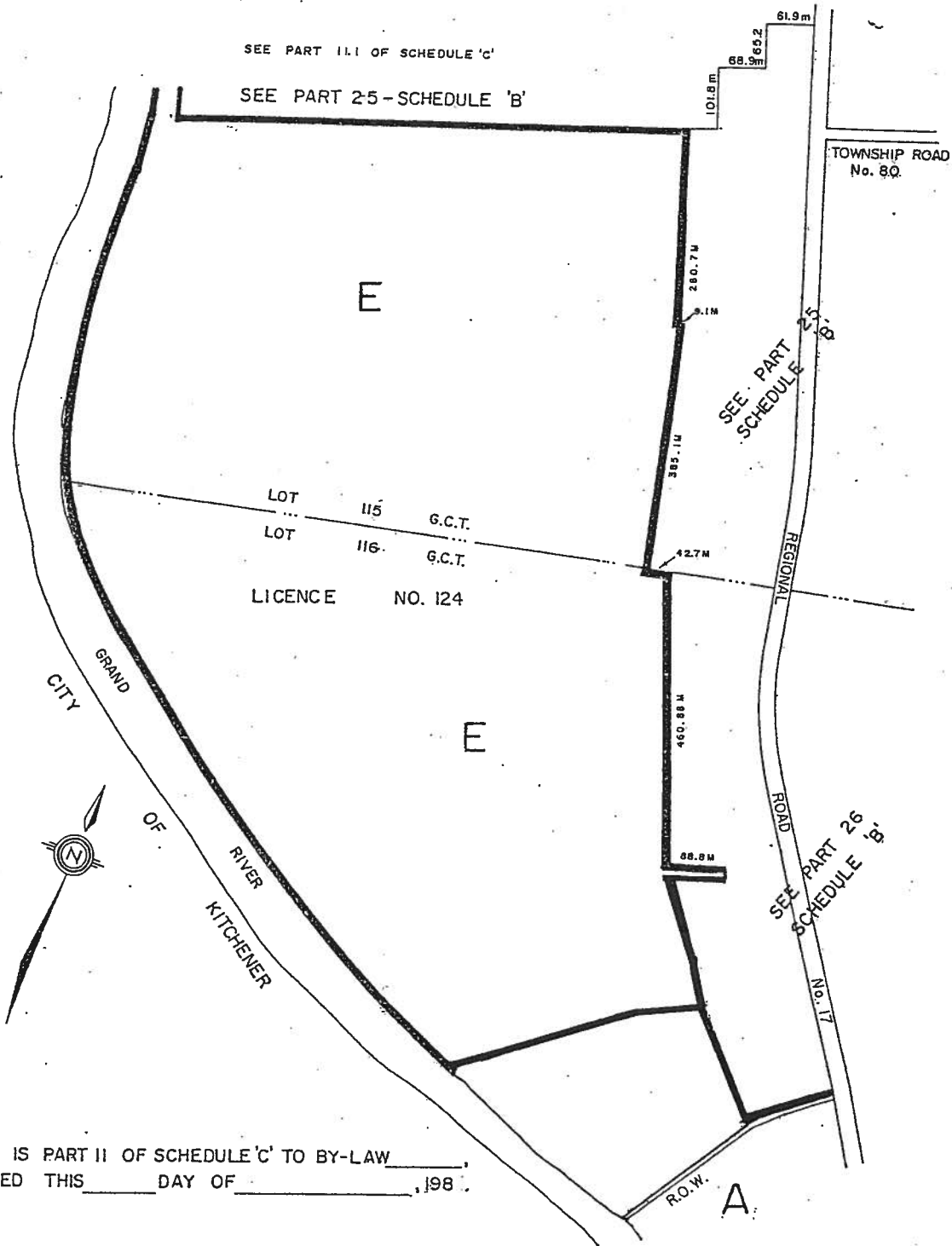


THIS IS PART 10 OF SCHEDULE 'C' TO BY-LAW _____,
 PASSED THIS _____ DAY OF _____, 198 .

 MAYOR

 CLERK

PART OF LOTS 115 G.C.T. & 116 G.C.T. TOWNSHIP OF WOOLWICH



THIS IS PART II OF SCHEDULE 'C' TO BY-LAW _____
 PASSED THIS _____ DAY OF _____, 198 _____

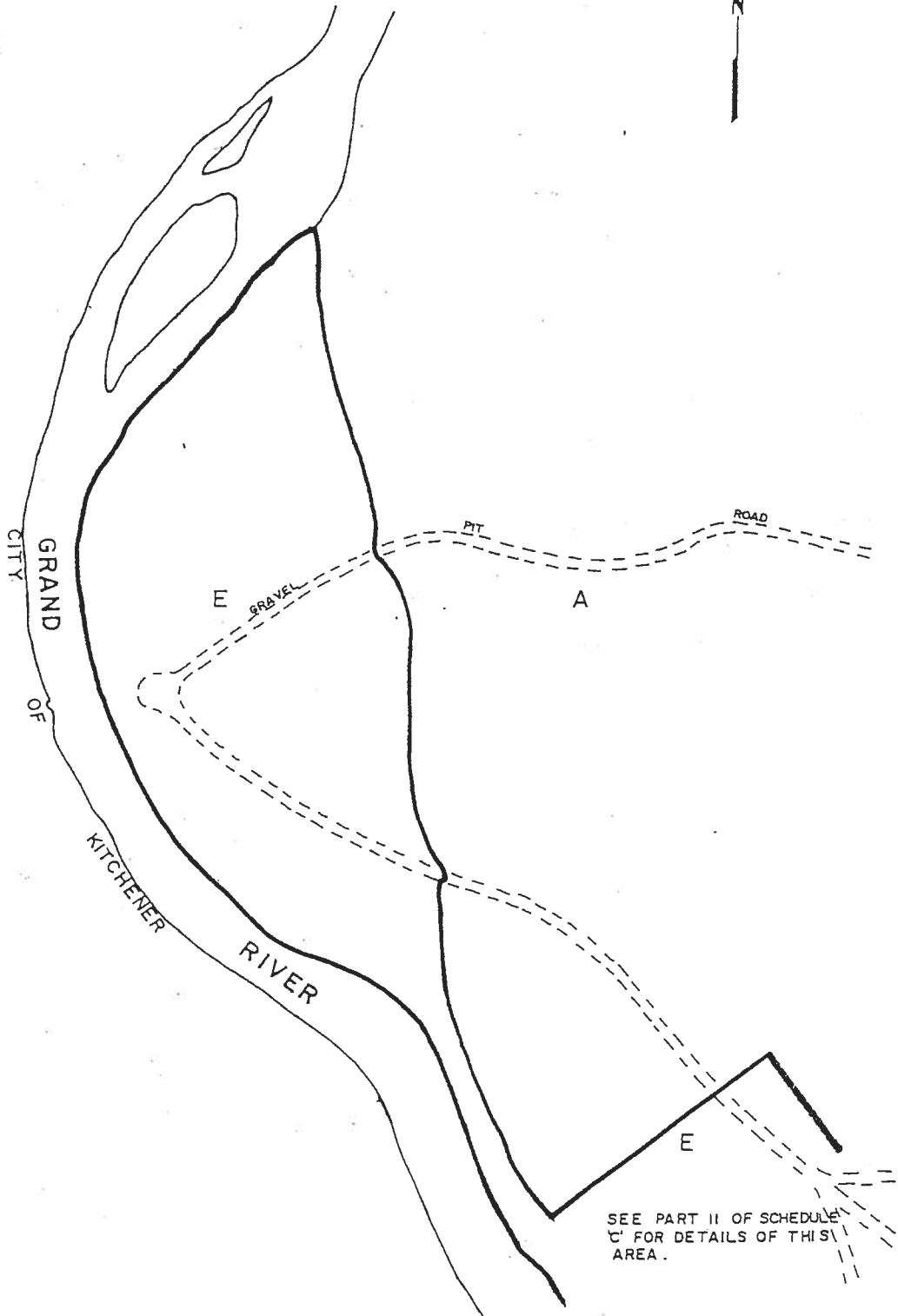
 MAYOR

 CLERK

PART LOT 114 AND 115 G.C.T.

TOWNSHIP OF WOOLWICH

SCHEDULE C1



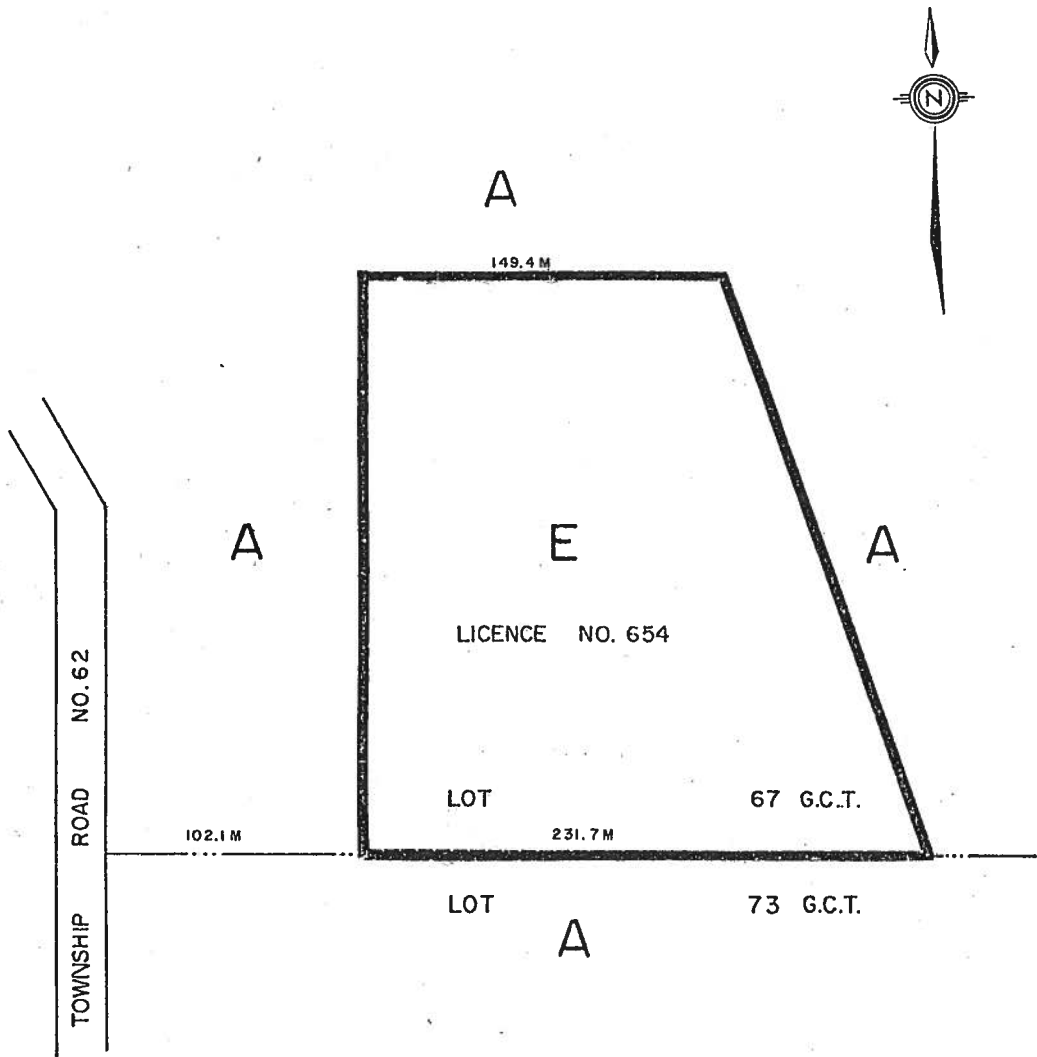
THIS IS PART 11.1 OF SCHEDULE "C" TO BY-LAW
_____, PASSED THIS _____ DAY OF _____, 1986.

MAYOR

CLERK

SEE PART 25 SCHEDULE 'B'
SCALE metric - 1 : 5000

PART OF LOT 67 G.C.T.
TOWNSHIP OF WOOLWICH



THIS IS PART 12 OF SCHEDULE 'C' TO BY-LAW _____,
PASSED THIS _____ DAY OF _____, 198 .

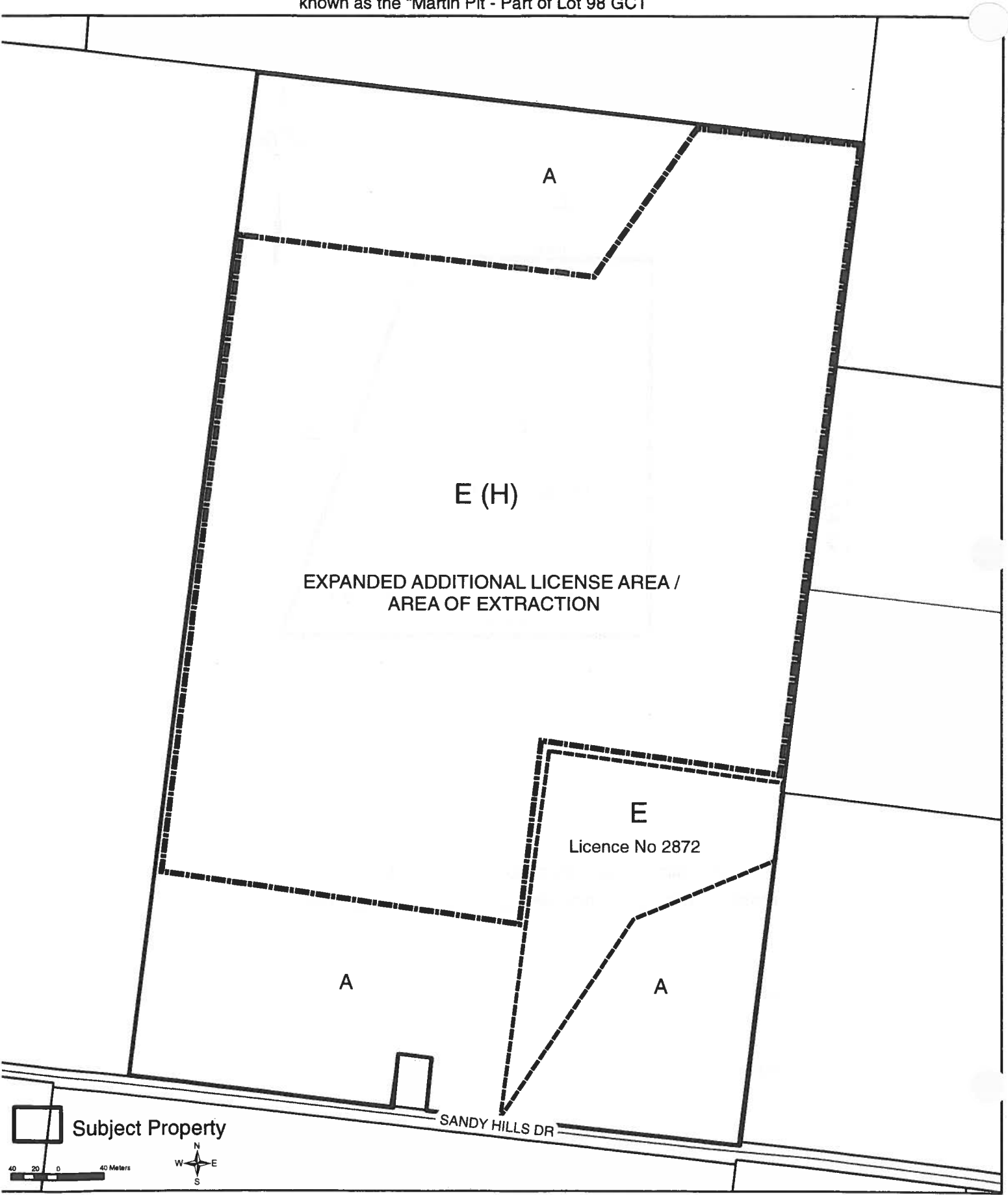
MAYOR

CLERK

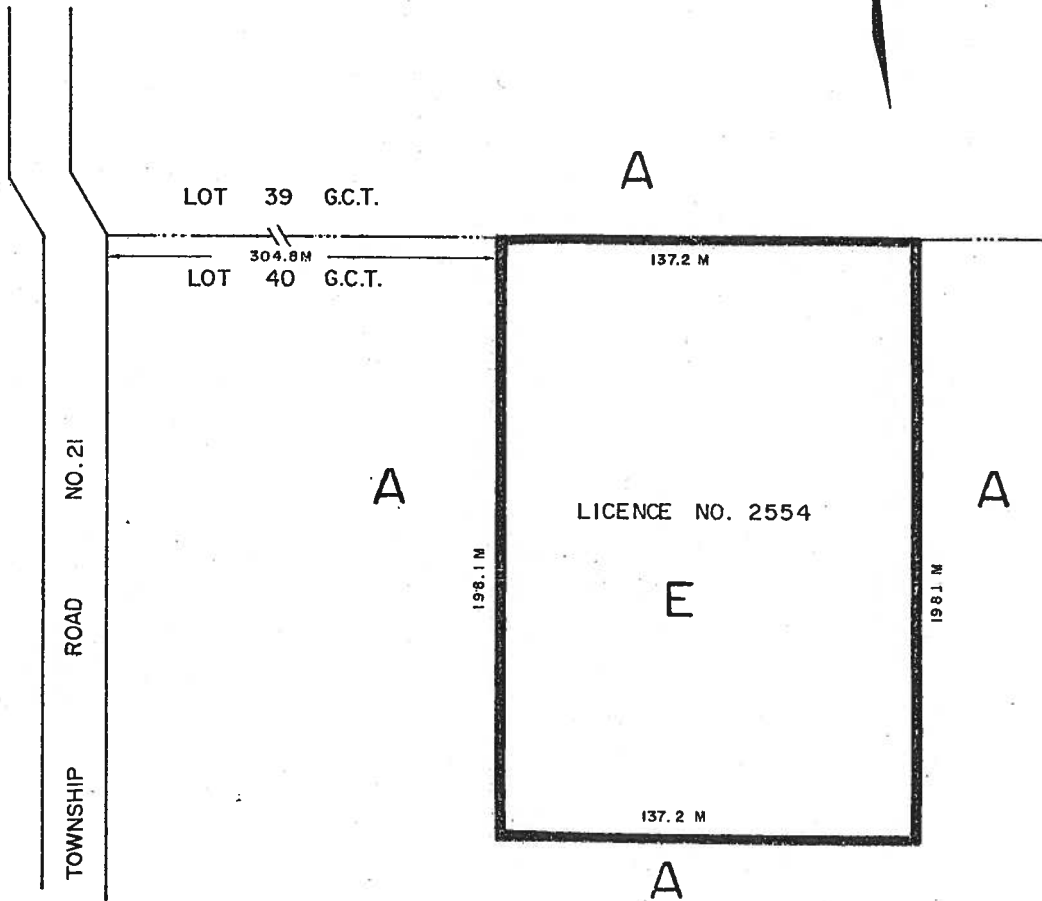
Figure 2
SCHEDULE C 13

777 Sandy Hills Drive
N.J. Excavating Inc. on behalf of Harvey Martin
known as the "Martin Pit - Part of Lot 98 GCT

C13



PART OF LOT 40 G.C.T.
TOWNSHIP OF WOOLWICH



THIS IS PART 14 OF SCHEDULE 'C' TO BY-LAW _____,
PASSED THIS _____ DAY OF _____, 198 .

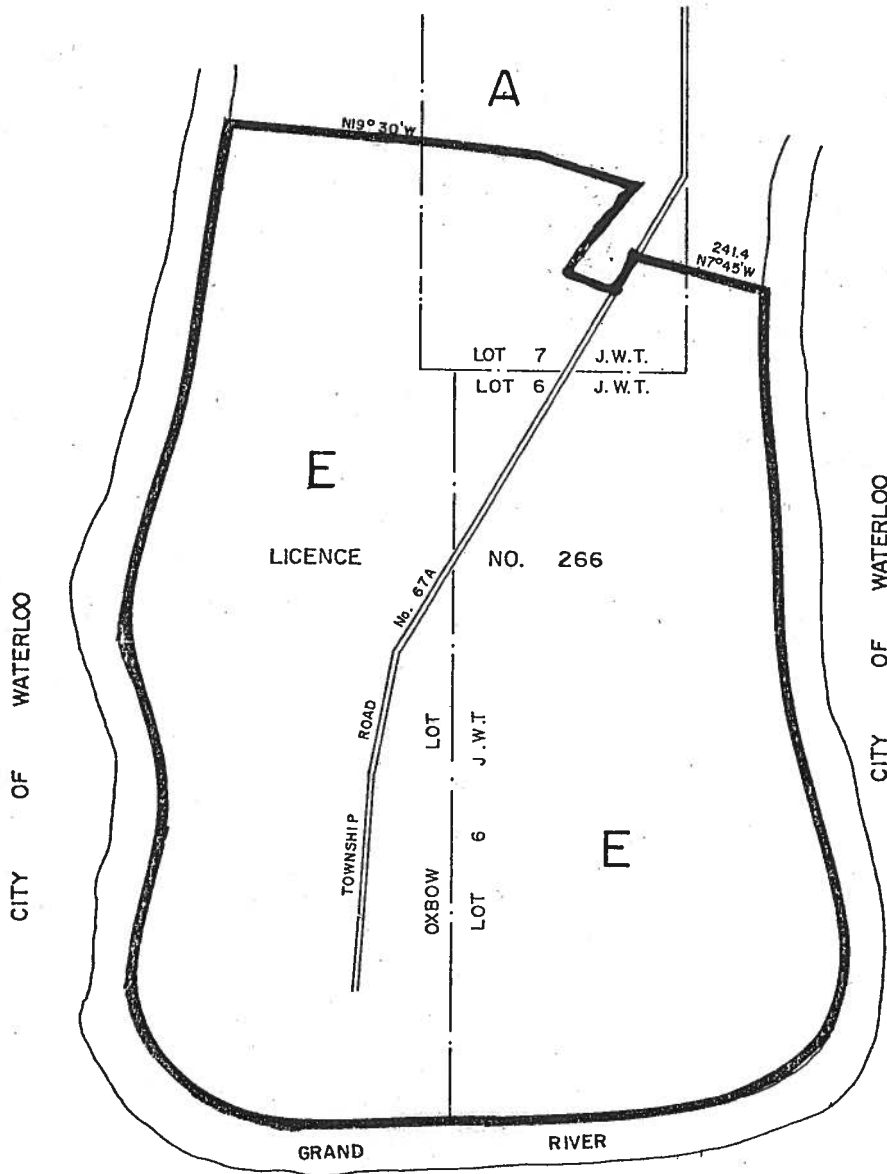
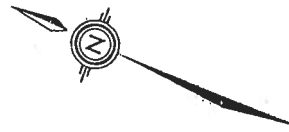
MAYOR

CLERK

SCHEDULE C15 – DELETED

By-law 83-2006 passed November 28, 2006 (General Amendment)

PART OF OXBOW LOT
PART OF LOTS 6 & 7 J.W.T.
TOWNSHIP OF WOOLWICH



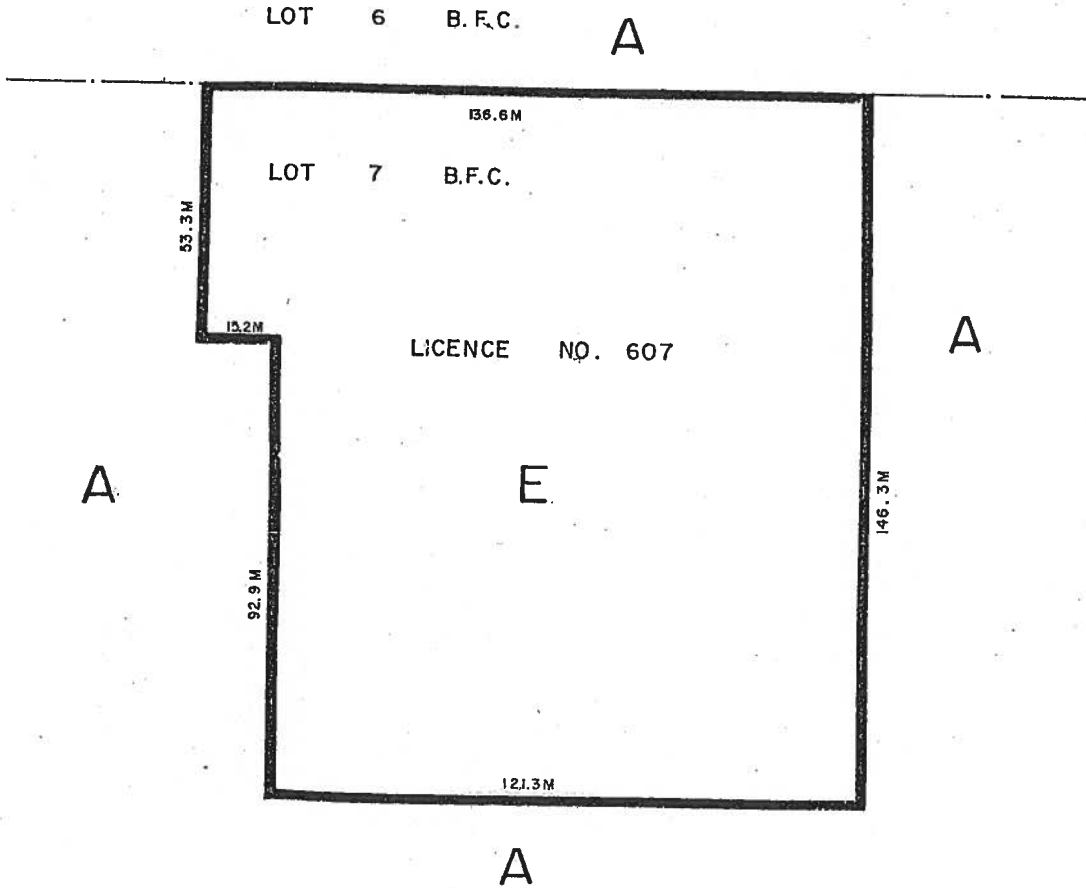
THIS IS PART 1E OF SCHEDULE 'C' TO BY-LAW _____,
PASSED THIS _____ DAY OF _____, 198 .

MAYOR

CLERK

PART OF LOT 7
BROKEN FRONT CONC. E.G.R.
(CROOK'S TRACT)
TOWNSHIP OF WOOLWICH

C17

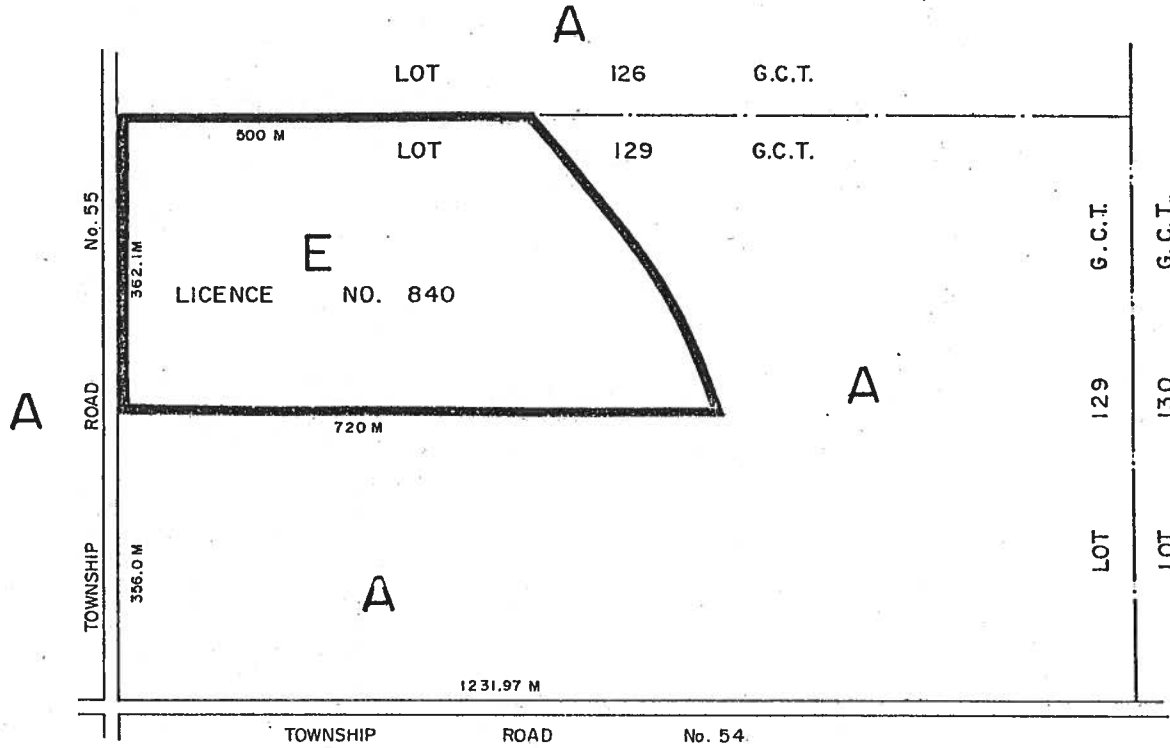


THIS IS PART 17 OF SCHEDULE 'C' TO BY-LAW _____,
PASSED THIS _____ DAY OF _____, 198 .

MAYOR

CLERK

PART OF LOT 129 G.C.T.,
TOWNSHIP OF WOOLWICH

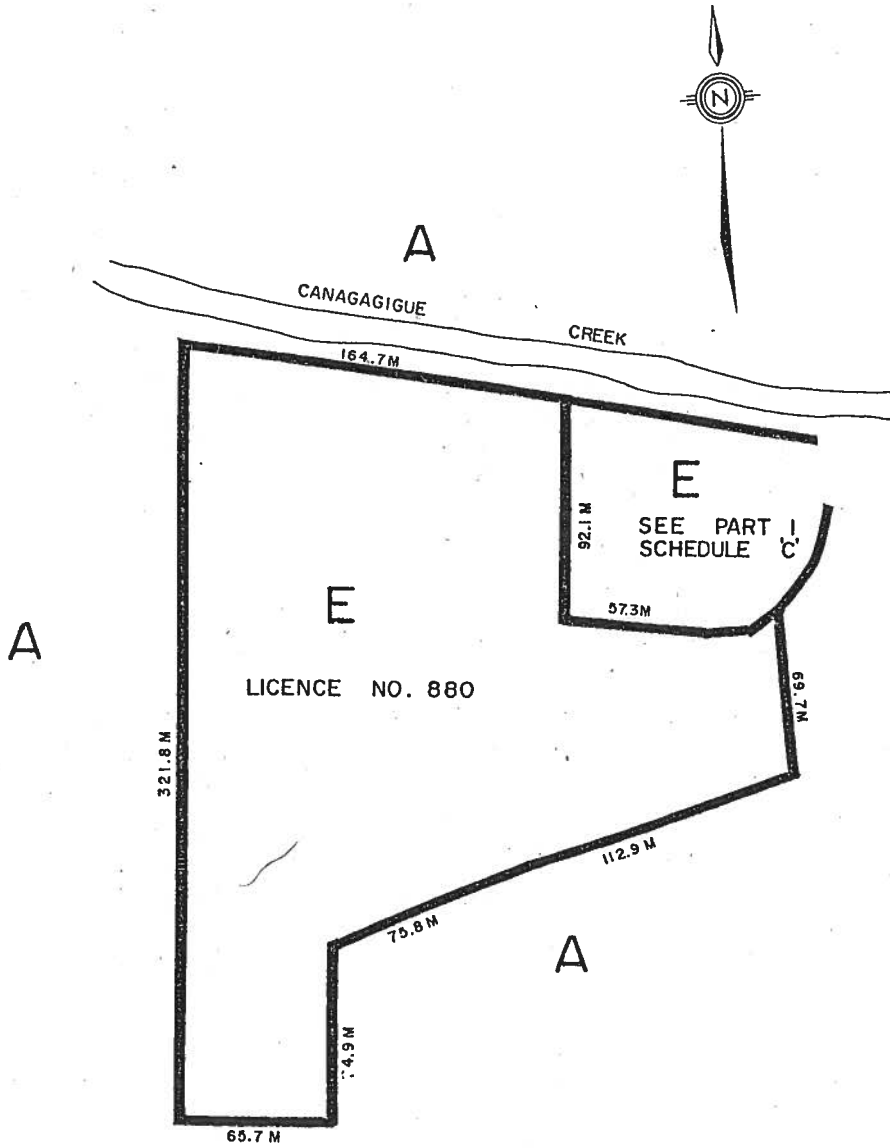


THIS IS PART 18 OF SCHEDULE 'C' TO BY-LAW _____,
PASSED THIS _____ DAY OF _____, 198 .

MAYOR

CLERK

PART OF LOT 90 G.C.T.
TOWNSHIP OF WOOLWICH

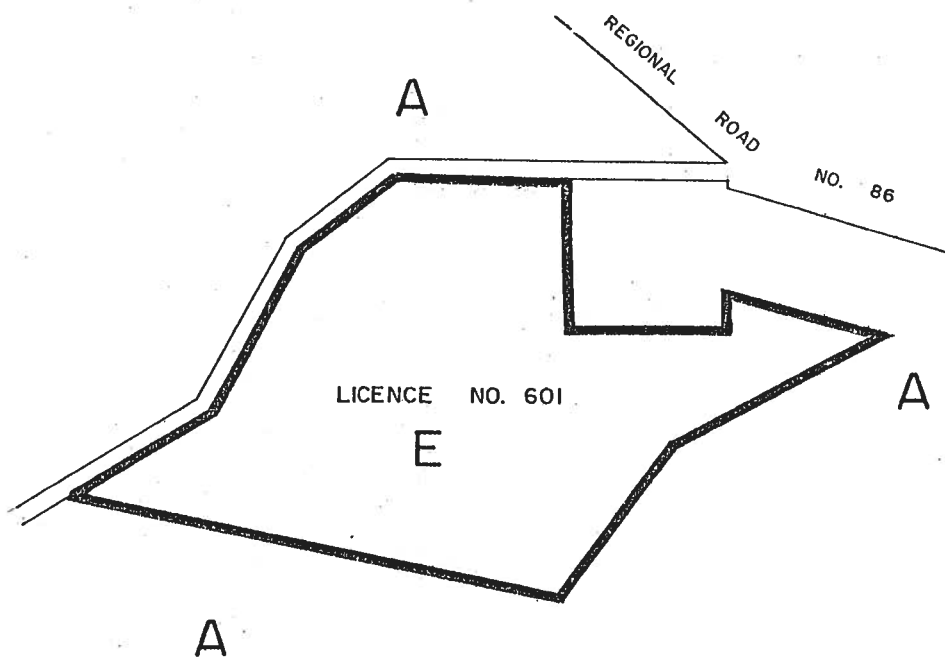


THIS IS PART 19 OF SCHEDULE 'C' TO BY-LAW _____,
PASSED THIS ____ DAY OF _____, 198 .

MAYOR

CLERK

PART OF LOT 74 G.C.T.
TOWNSHIP OF WOOLWICH

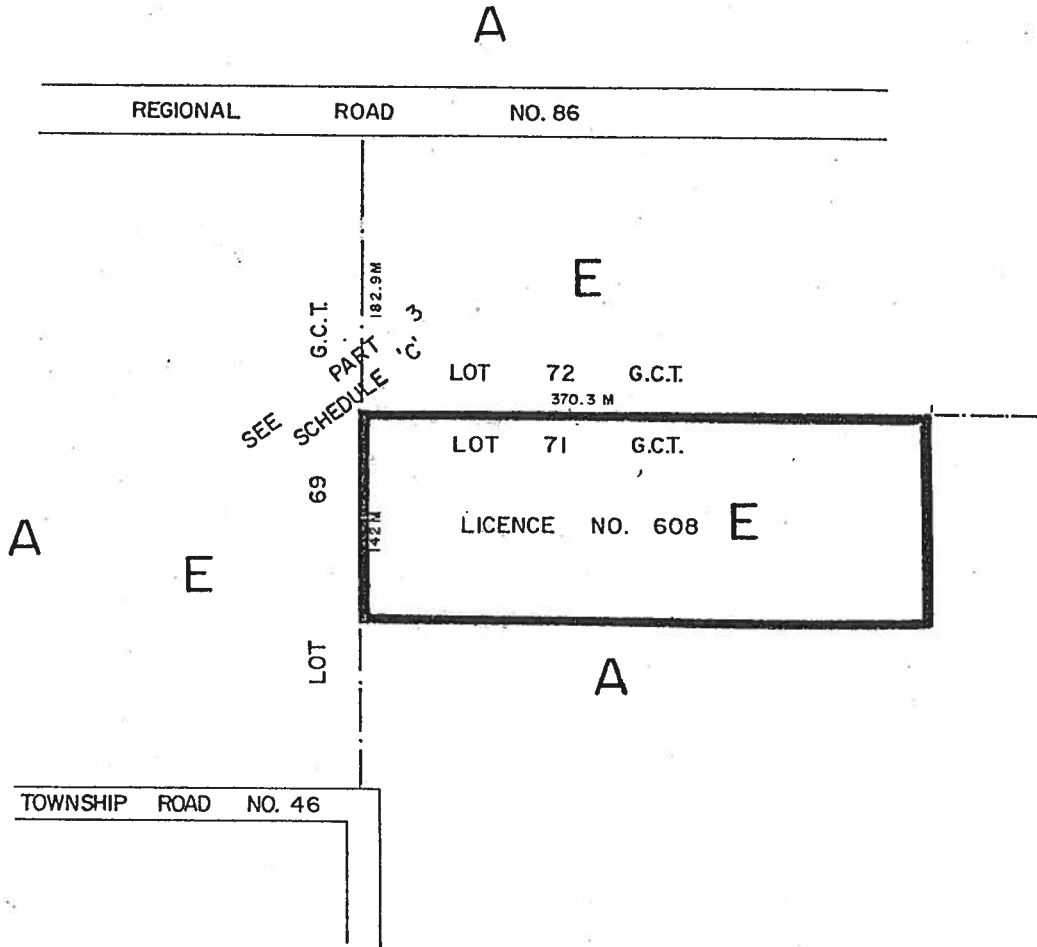


THIS IS PART 20 OF SCHEDULE 'C' TO BY-LAW _____,
PASSED THIS _____ DAY OF _____, 198 .

MAYOR

CLERK

PART OF LOT 71 G.C.T.
TOWNSHIP OF WOOLWICH



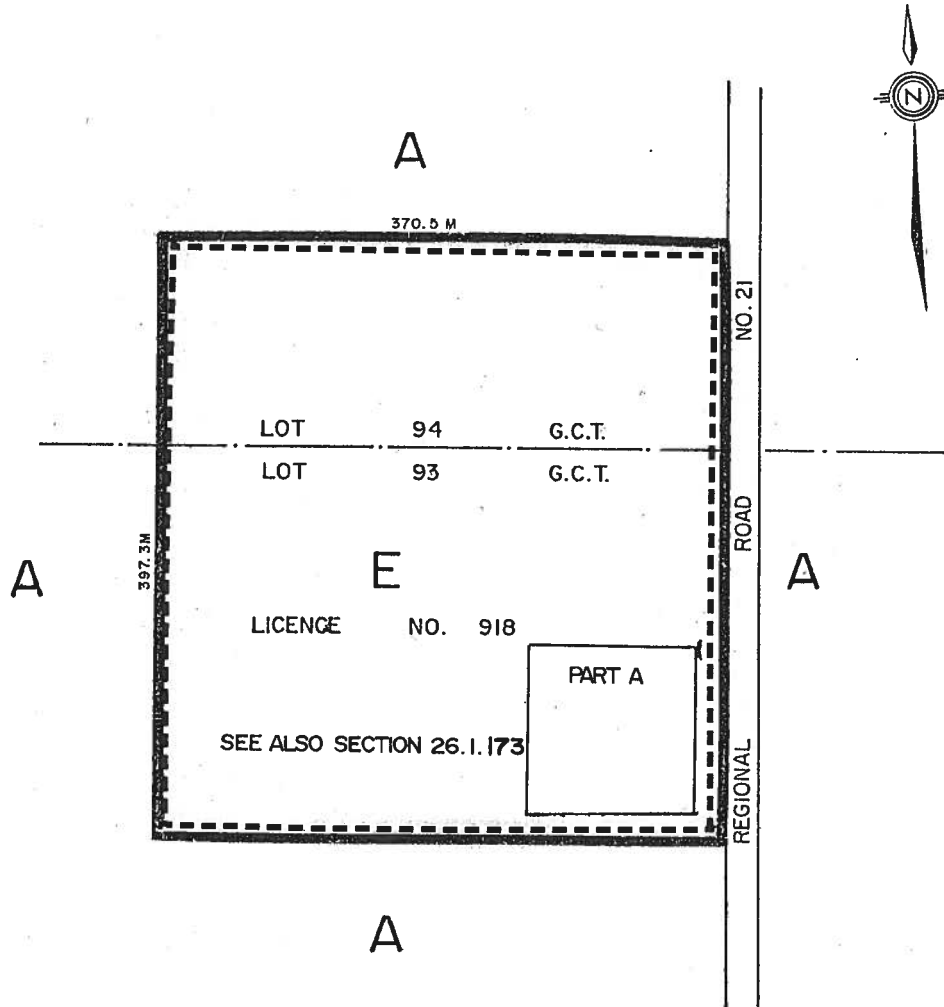
THIS IS PART 21 OF SCHEDULE 'C' TO BY-LAW _____,

PASSED THIS _____ DAY OF _____, 198 .

MAYOR

CLERK

PART OF LOTS 93 G.C.T. & 94 G.C.T.
TOWNSHIP OF WOOLWICH

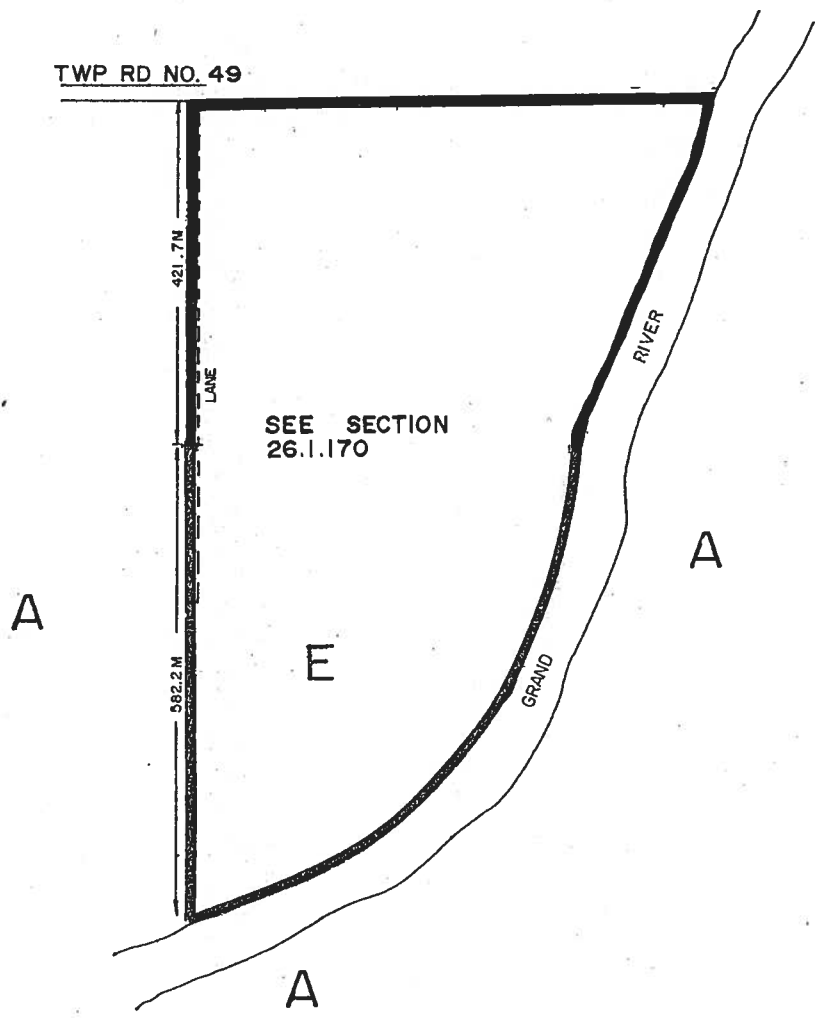


THIS IS PART 22 OF SCHEDULE 'C' TO BY-LAW _____,
PASSED THIS _____ DAY OF _____, 19

MAYOR

CLERK

PART OF LOT I
BROKEN FRONT CON. W.G.R.
CROOKS TRACT
TOWNSHIP OF WOOLWICH

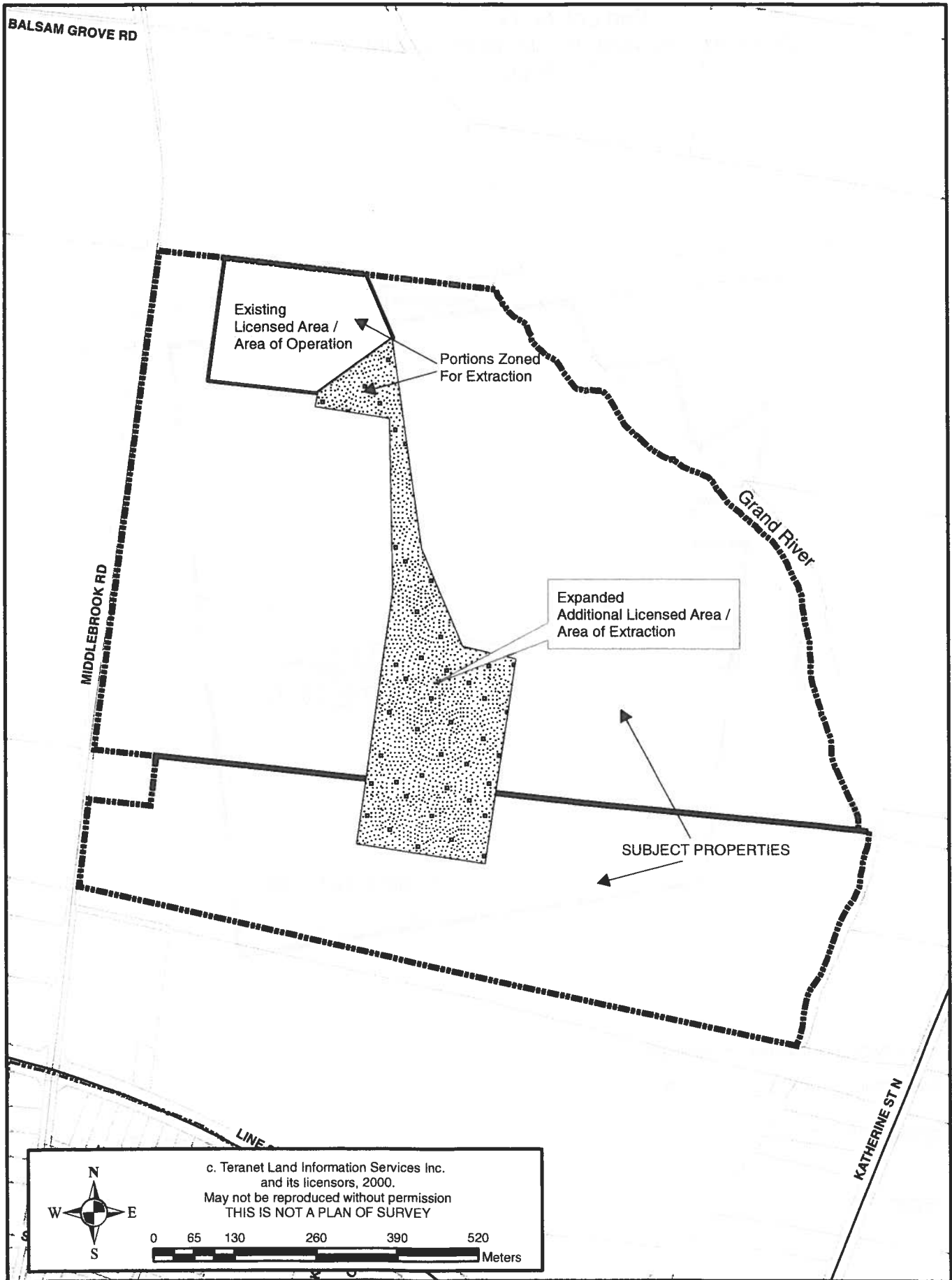


THIS IS PART 23 OF SCHEDULE 'C' TO BY-LAW _____,
PASSED THIS _____ DAY OF _____, 198 _____.

MAYOR

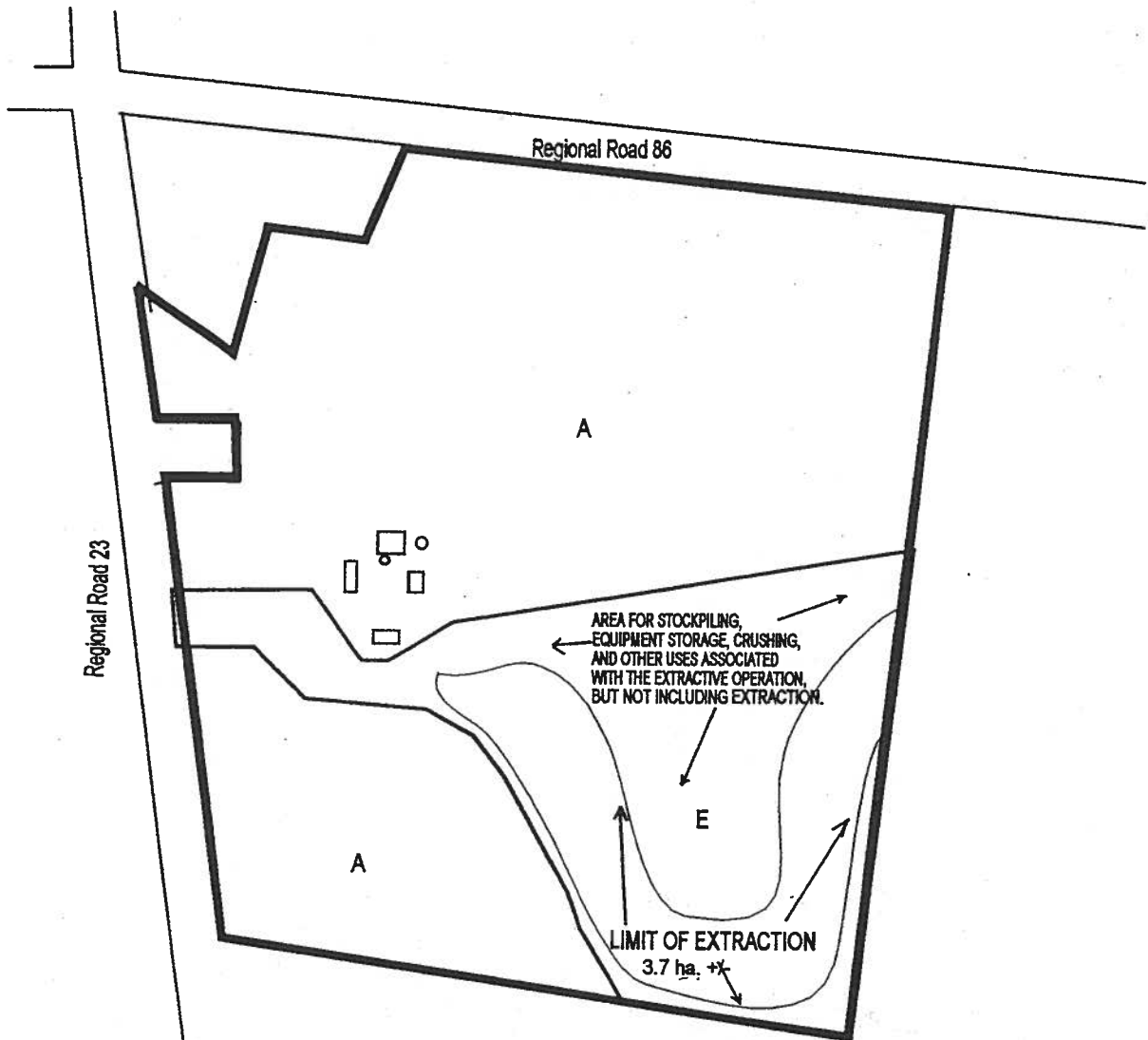
CLERK

Schedule A - FIGURE 1
German Company Tract Part Lot 72 and 73 – Middlebrook Road
D & J Lockhart Excavators - Ivan Martin and Grant Bauman
Location / Area of Operation Map



c. Teranet Land Information Services Inc.
and its licensors, 2000.
May not be reproduced without permission
THIS IS NOT A PLAN OF SURVEY

Part Lot 74, G.C.T.
(Former Township of Woolwich, County of
Waterloo)



THIS IS PART 26 OF SCHEDULE "C" OF BY-LAW _____

PASSED THIS _____ DAY OF _____, 1997.

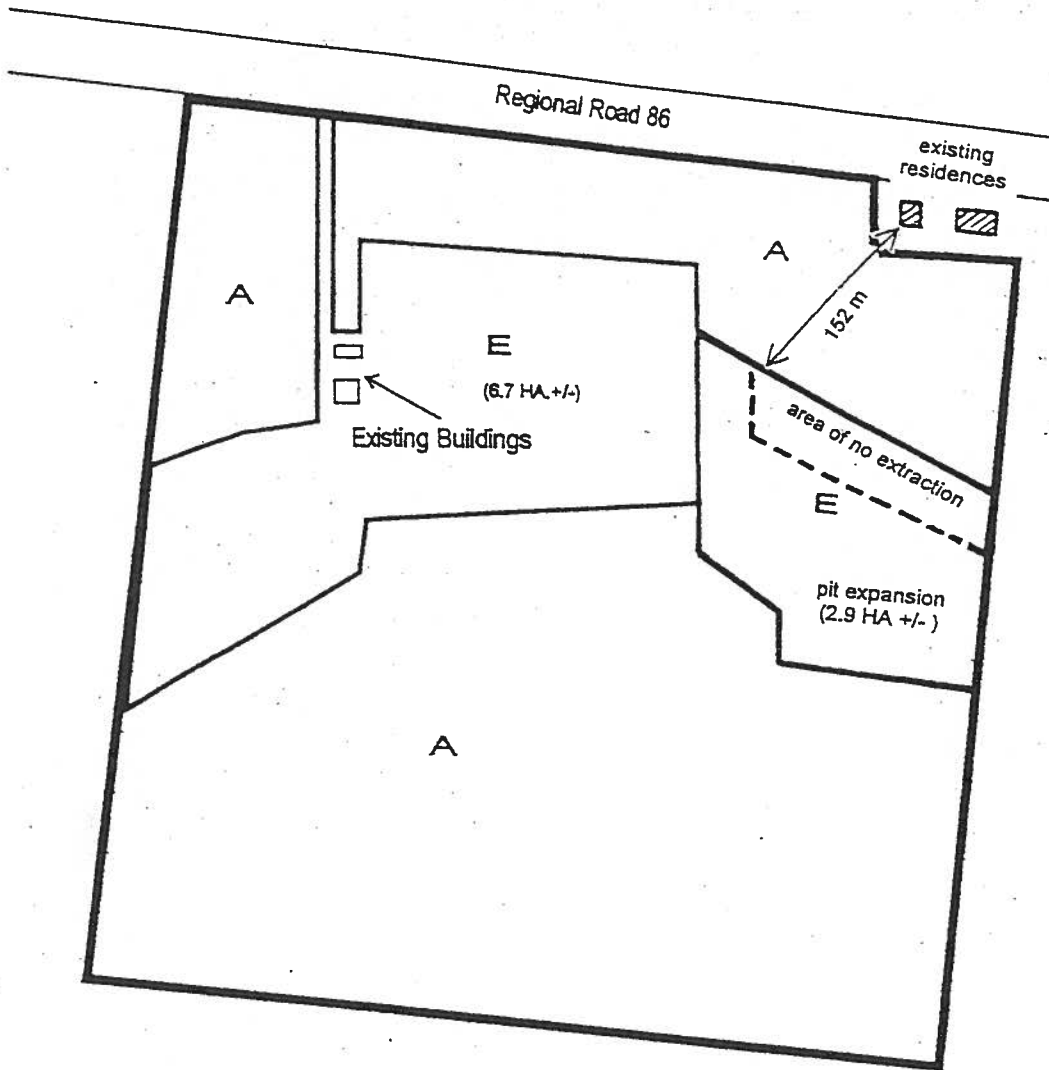
MAYOR

CLERK



Approximate Scale 1:5500

Part Lot 74, G.C.T.
(Former Township of Woolwich, County of
Waterloo)



THIS IS PART '27' OF SCHEDULE "C" OF BY-LAW _____

PASSED THIS _____ DAY OF _____, 2001

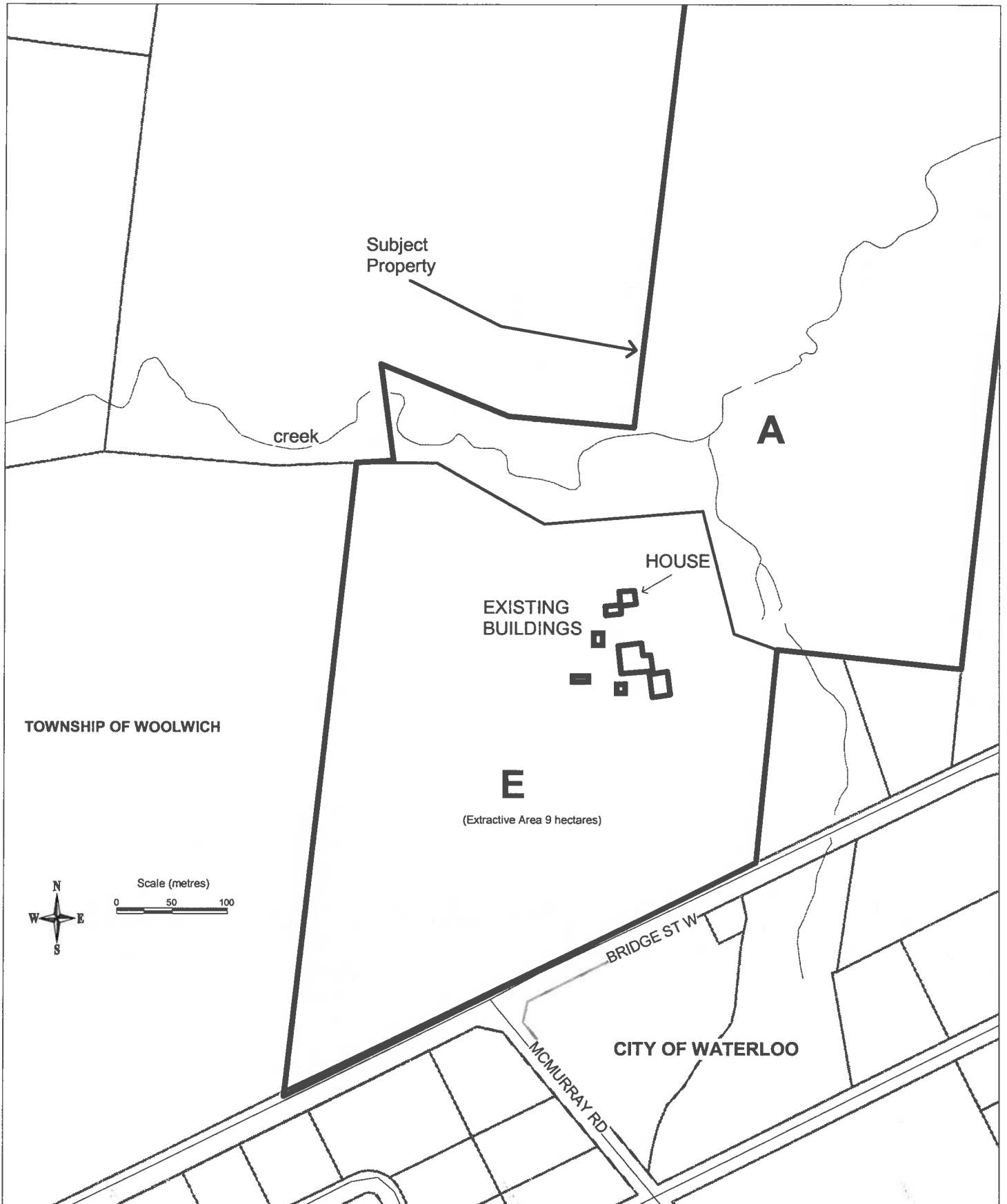
MAYOR

CLERK


Approximate Scale 1:5500

889 BRIDGE STREET WEST
PART LOT 4, GCT

C28



Part of Lot 3, Crooks Tract, West of Grand River
(OMB PL110809)

