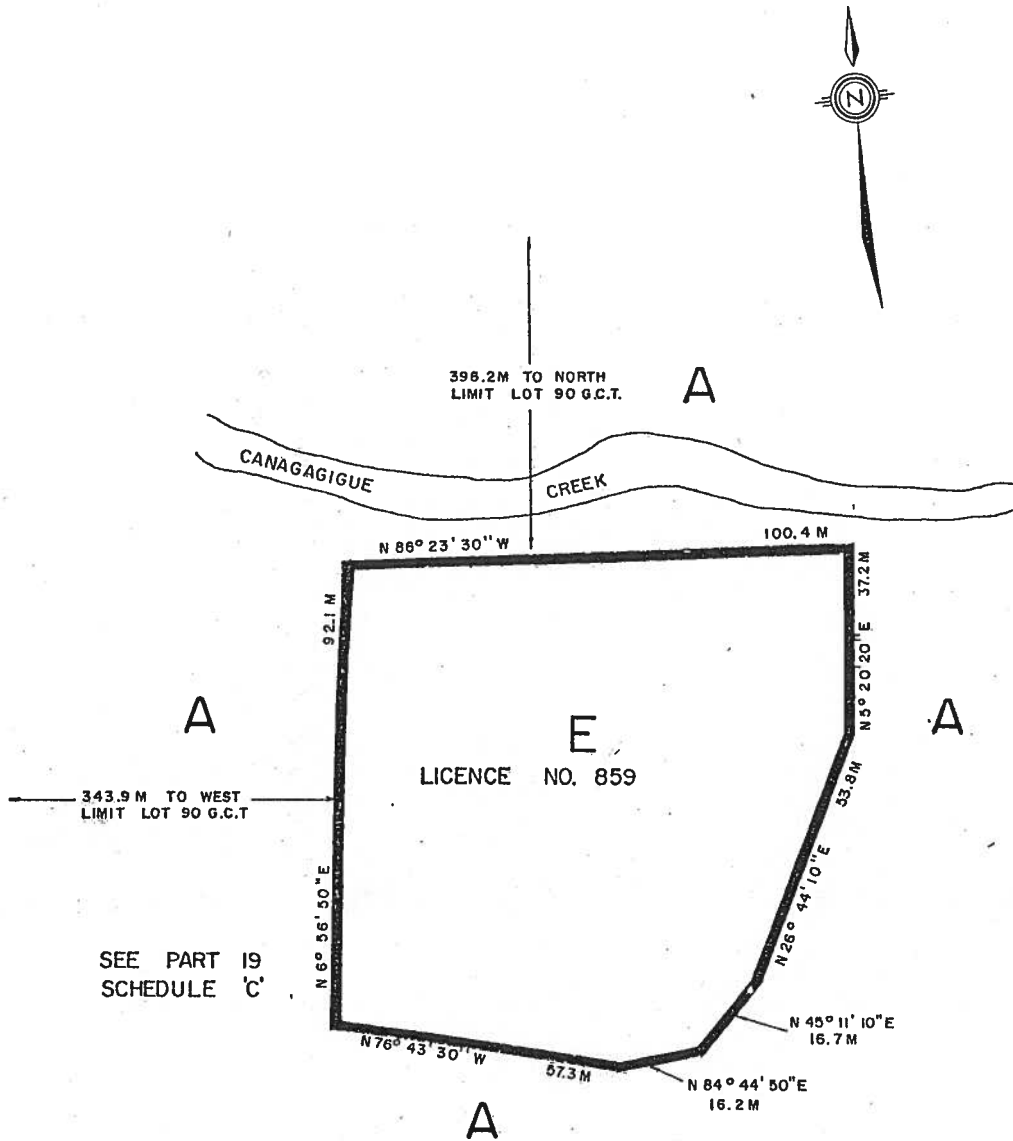


# PART OF LOT 90 G.C.T. TOWNSHIP OF WOOLWICH



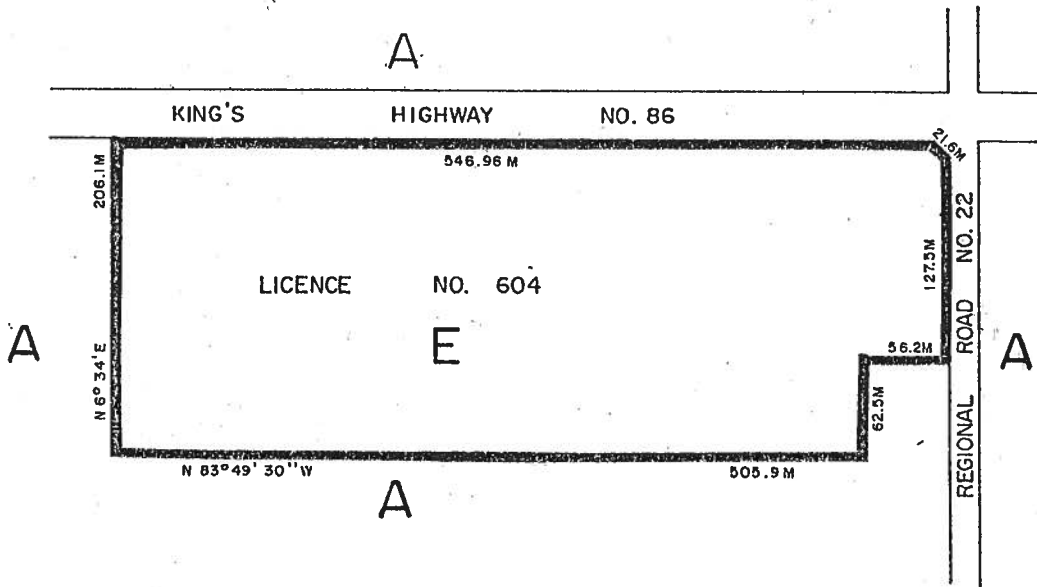
THIS IS PART I OF SCHEDULE 'C' TO BY-LAW \_\_\_\_\_,  
 PASSED THIS \_\_\_\_\_ DAY OF \_\_\_\_\_, 198 .

\_\_\_\_\_  
 MAYOR

\_\_\_\_\_  
 CLERK

SCALE : 1 : 1200

PART OF LOT 52 G.C.T.  
TOWNSHIP OF WOOLWICH

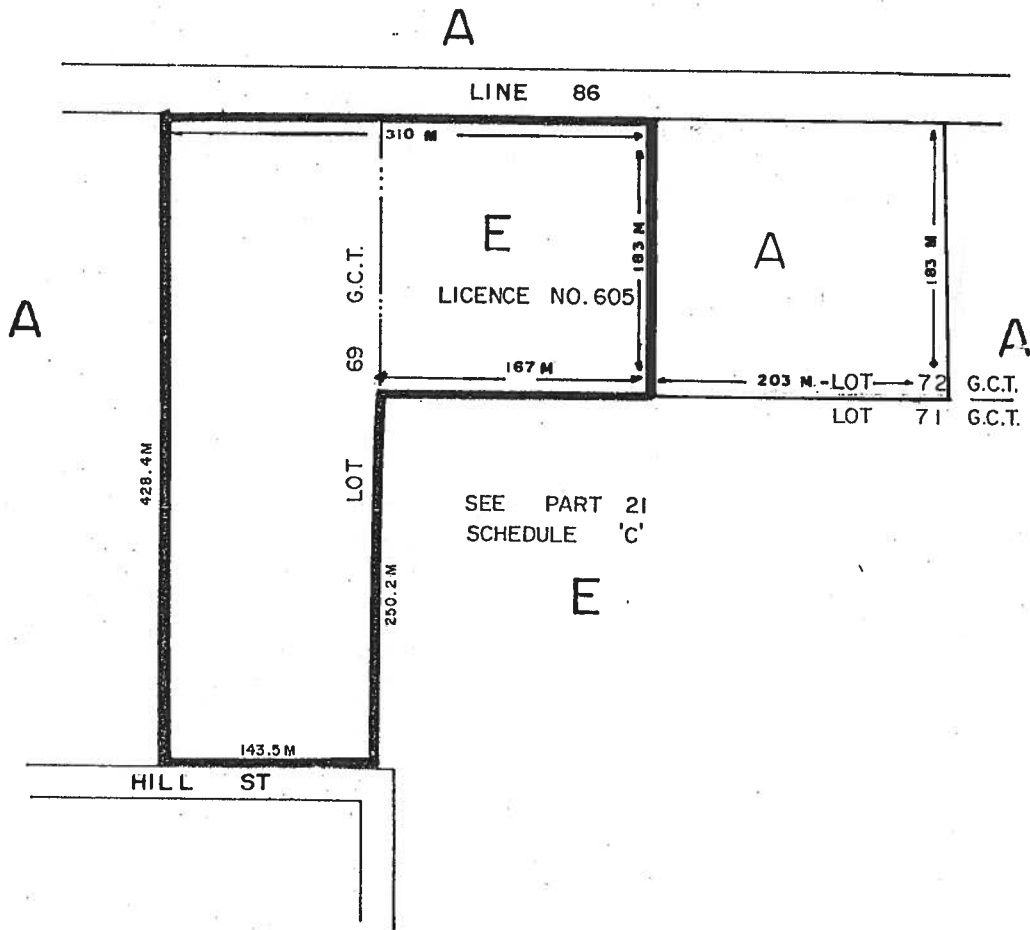


THIS IS PART 2 OF SCHEDULE 'C' TO BY-LAW \_\_\_\_\_,  
PASSED THIS \_\_\_\_\_ DAY OF \_\_\_\_\_, 198 .

\_\_\_\_\_  
MAYOR

\_\_\_\_\_  
CLERK

PART OF LOTS 69 G.C.T & 72 G.C.T.  
TOWNSHIP OF WOOLWICH

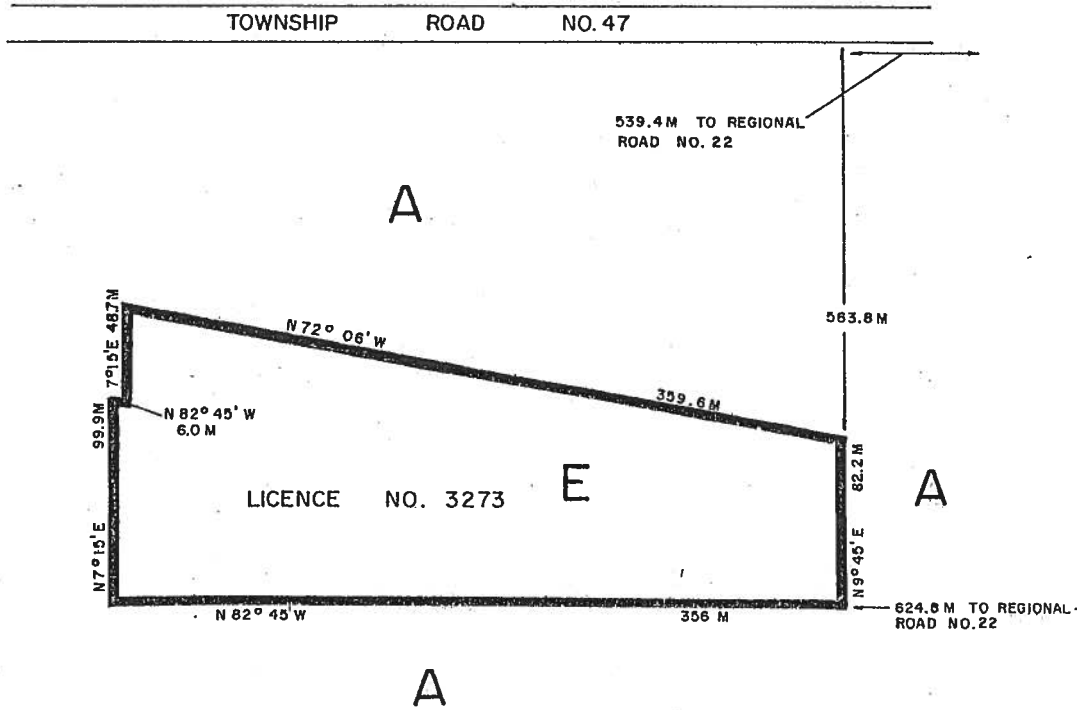


THIS IS PART 3 OF SCHEDULE 'C' TO BY-LAW \_\_\_\_\_,  
 PASSED THIS \_\_\_\_\_ DAY OF \_\_\_\_\_, 198 .

\_\_\_\_\_  
 MAYOR

\_\_\_\_\_  
 CLERK

PART OF LOT 28 G.C.T.  
TOWNSHIP OF WOOLWICH



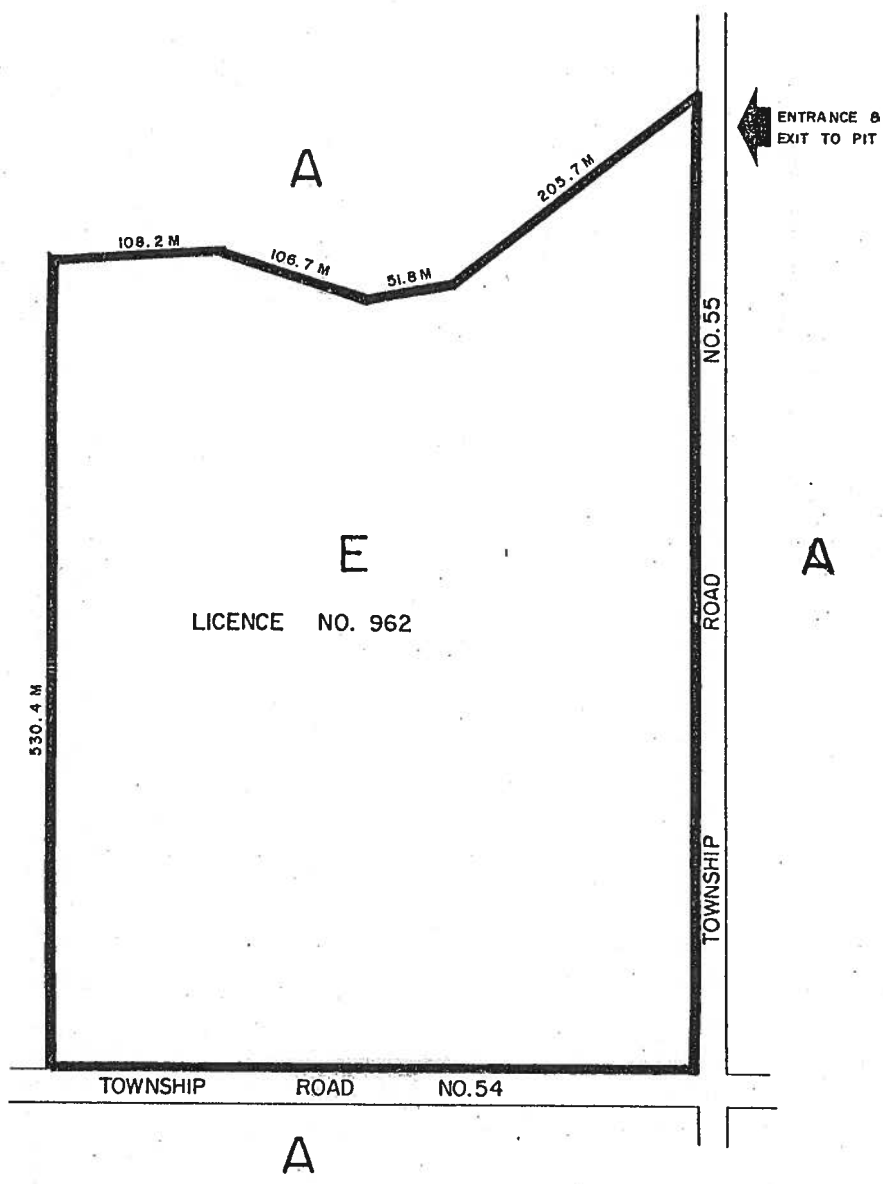
THIS IS PART 4 OF SCHEDULE 'C' TO BY-LAW \_\_\_\_\_,  
PASSED THIS \_\_\_\_\_ DAY OF \_\_\_\_\_, 198 .

\_\_\_\_\_  
MAYOR

\_\_\_\_\_  
CLERK

PART OF LOT 129 G.C.T.  
TOWNSHIP OF WOOLWICH

03



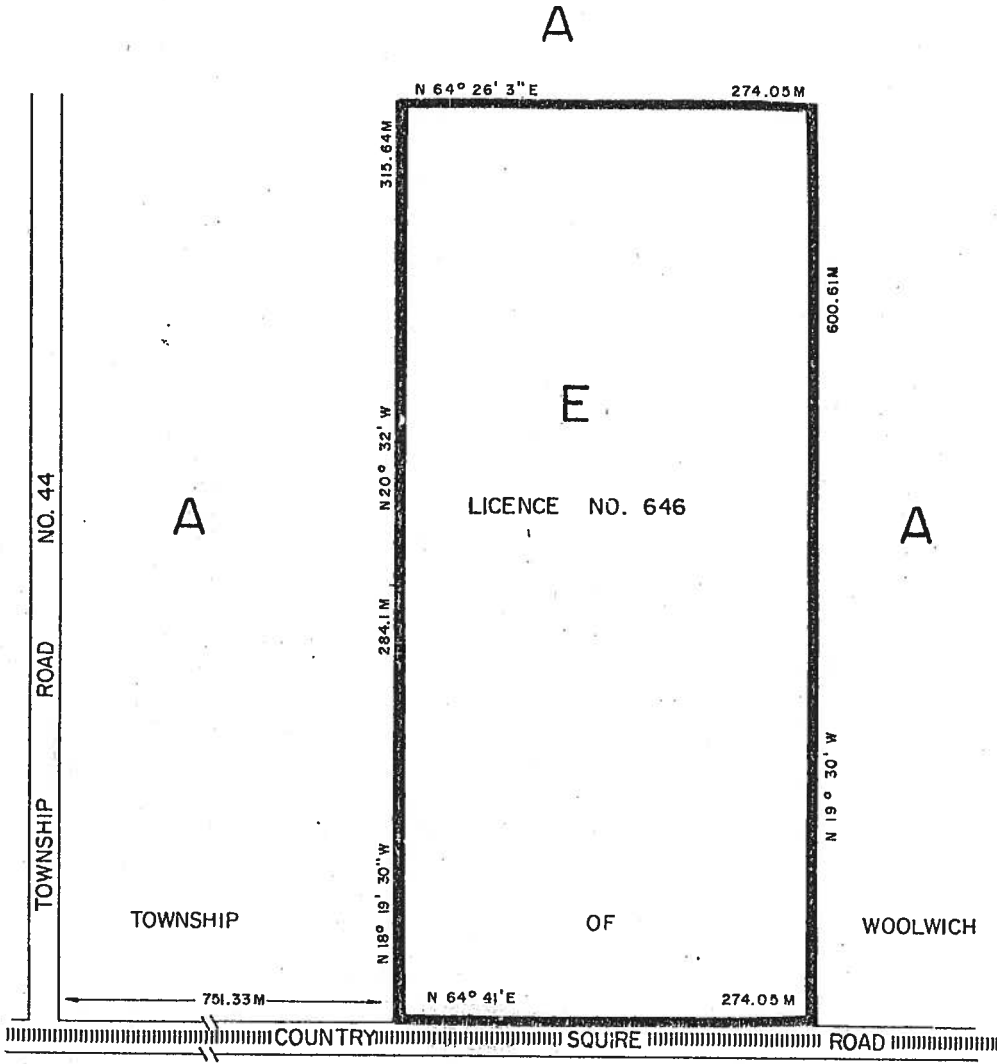
THIS IS PART 5 OF SCHEDULE 'C' TO BY-LAW \_\_\_\_\_,  
PASSED THIS \_\_\_\_\_ DAY OF \_\_\_\_\_, 198 .

\_\_\_\_\_  
MAYOR

\_\_\_\_\_  
CLERK

SCALE: 1:4000

PART OF LOT I G.C.T.  
TOWNSHIP OF WOOLWICH



CITY OF WATERLOO

THIS IS PART 6 OF SCHEDULE 'C' TO BY-LAW \_\_\_\_\_,  
PASSED THIS \_\_\_\_\_ DAY OF \_\_\_\_\_, 198 .

\_\_\_\_\_

MAYOR

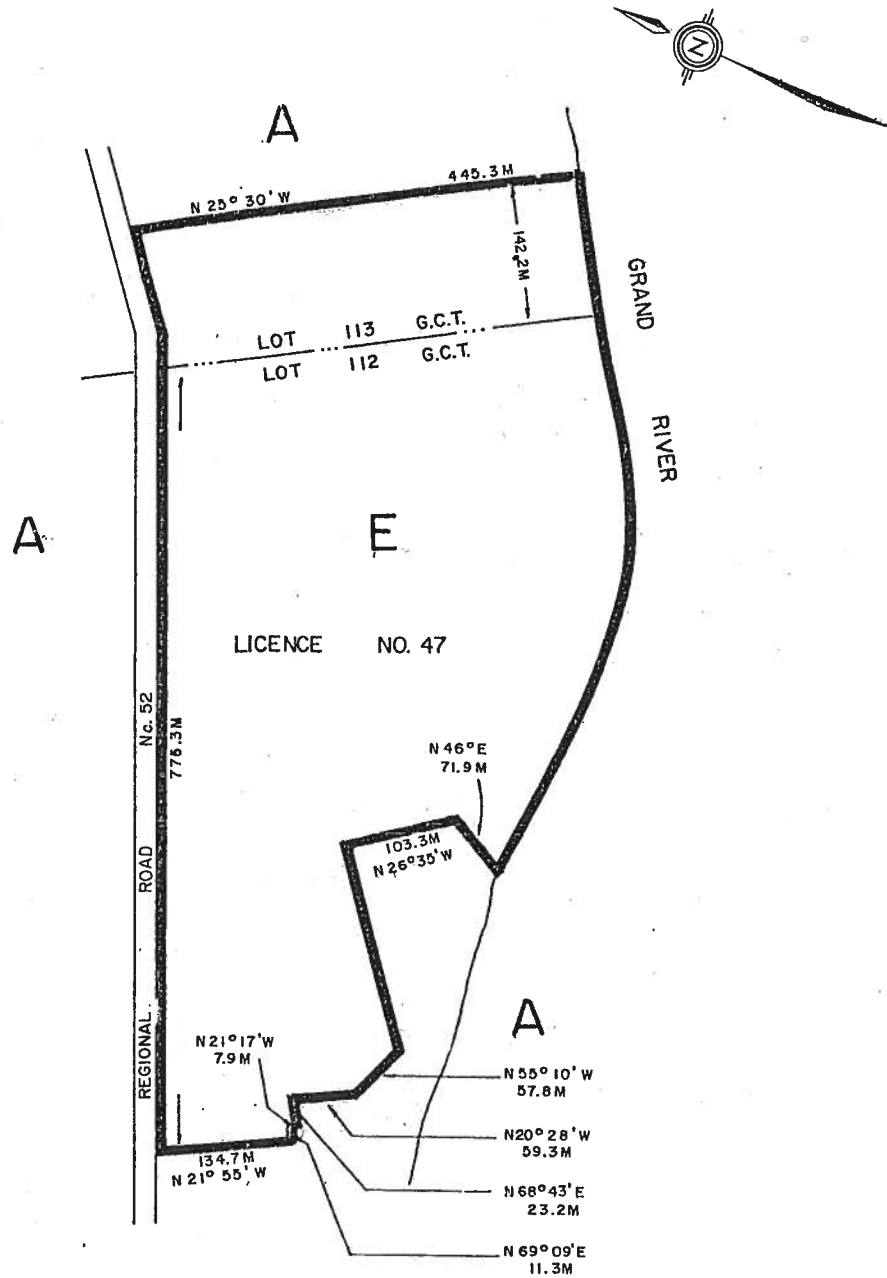
\_\_\_\_\_

CLERK

**SCHEDULE C7 – DELETED**

**By-law 83-2006 passed November 28, 2006 (General Amendment)**

# PART OF LOTS 112 G.C.T. & 113 G.C.T. TOWNSHIP OF WOOLWICH



THIS IS PART B OF SCHEDULE 'C' TO BY-LAW \_\_\_\_\_,  
PASSED THIS \_\_\_\_\_ DAY OF \_\_\_\_\_, 198 \_\_\_\_\_.

\_\_\_\_\_  
MAYOR

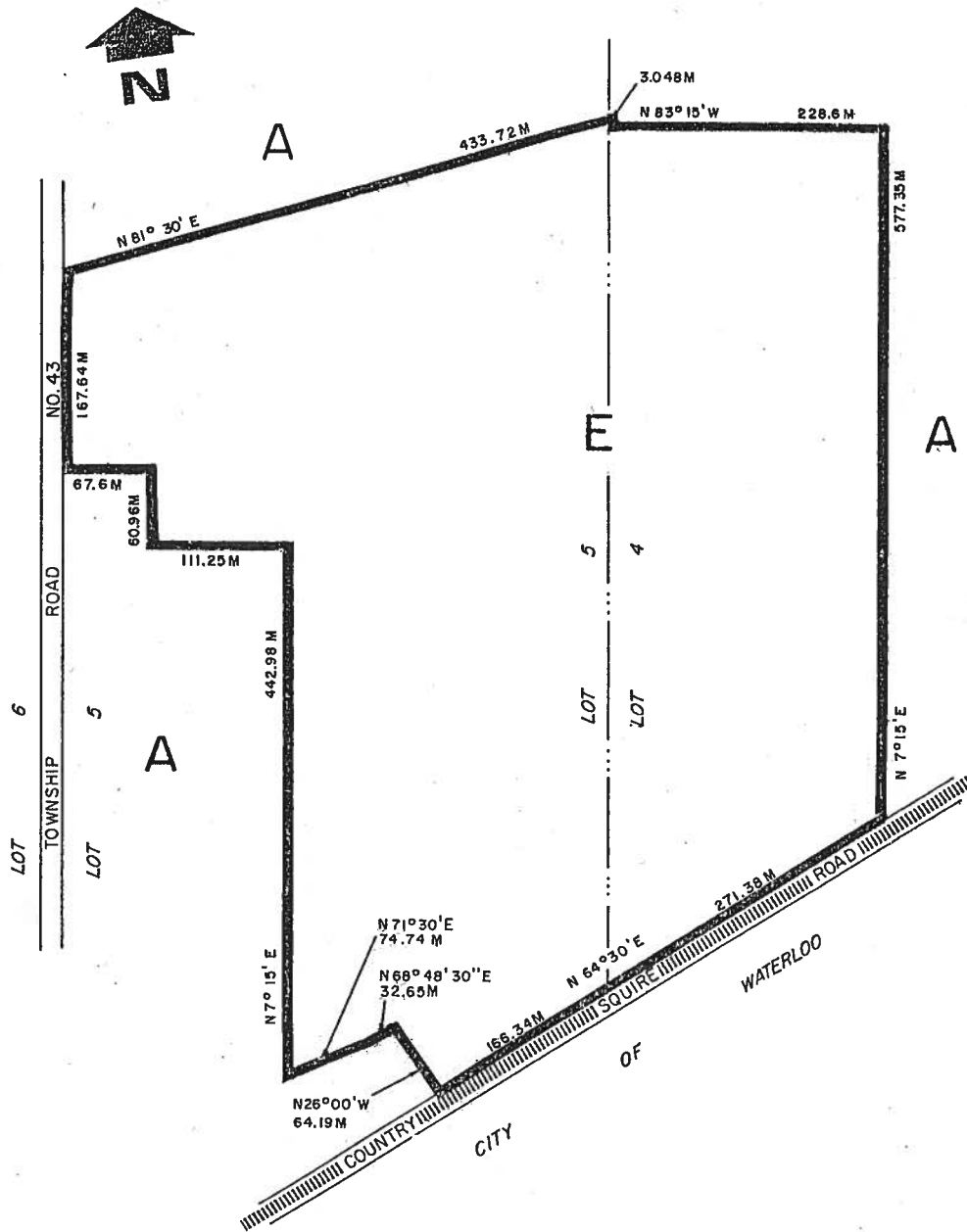
\_\_\_\_\_  
CLERK



**SCHEDULE C9 – DELETED**

**By-law 83-2006 passed November 28, 2006 (General Amendment)**

# PART OF LOTS 4 & 5 G.C.T. TOWNSHIP OF WOOLWICH

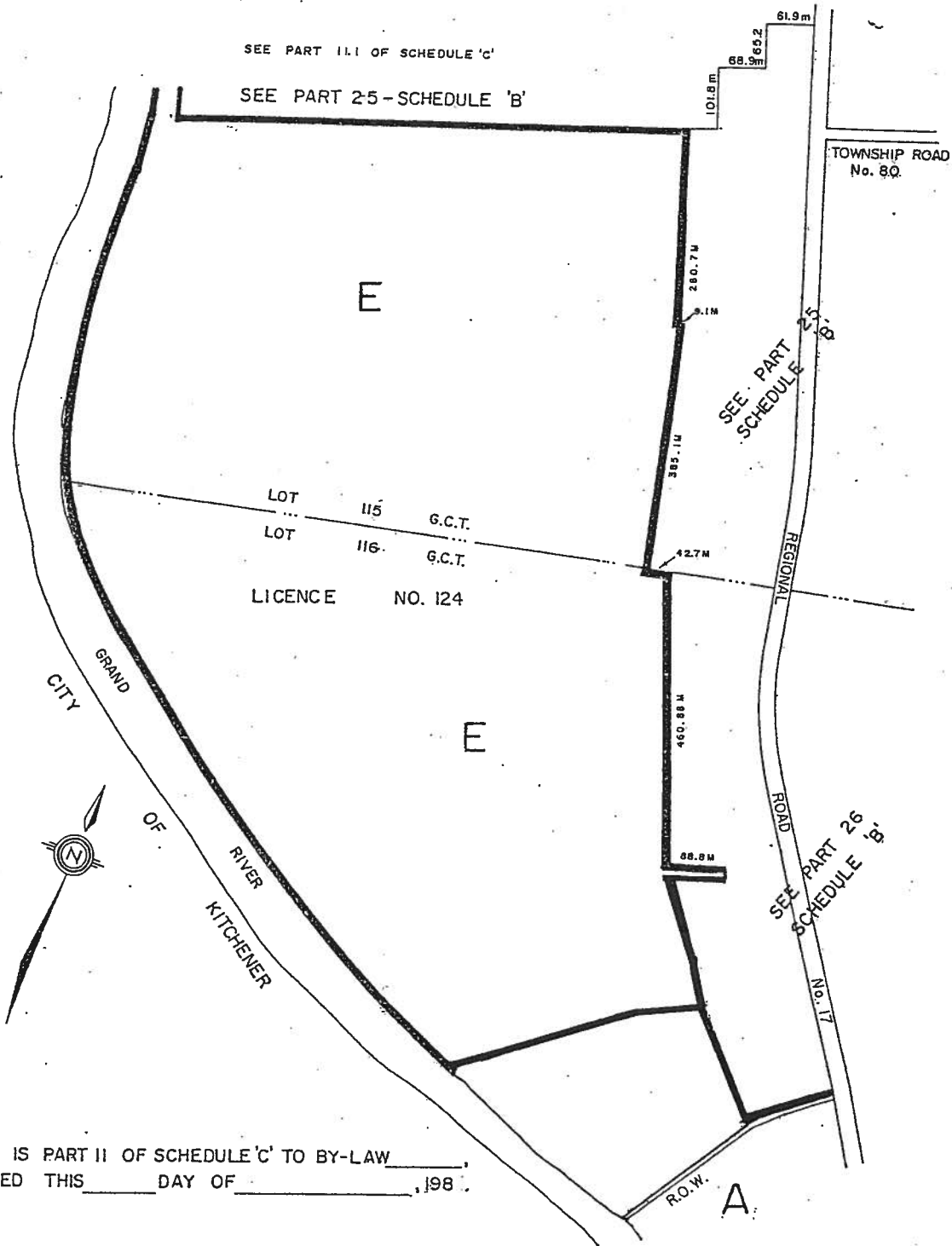


THIS IS PART 10 OF SCHEDULE 'C' TO BY-LAW \_\_\_\_\_,  
 PASSED THIS \_\_\_\_\_ DAY OF \_\_\_\_\_, 198 .

\_\_\_\_\_  
 MAYOR

\_\_\_\_\_  
 CLERK

PART OF LOTS 115 G.C.T. & 116 G.C.T.  
TOWNSHIP OF WOOLWICH



THIS IS PART II OF SCHEDULE 'C' TO BY-LAW \_\_\_\_\_  
PASSED THIS \_\_\_\_\_ DAY OF \_\_\_\_\_, 198 \_\_\_\_\_

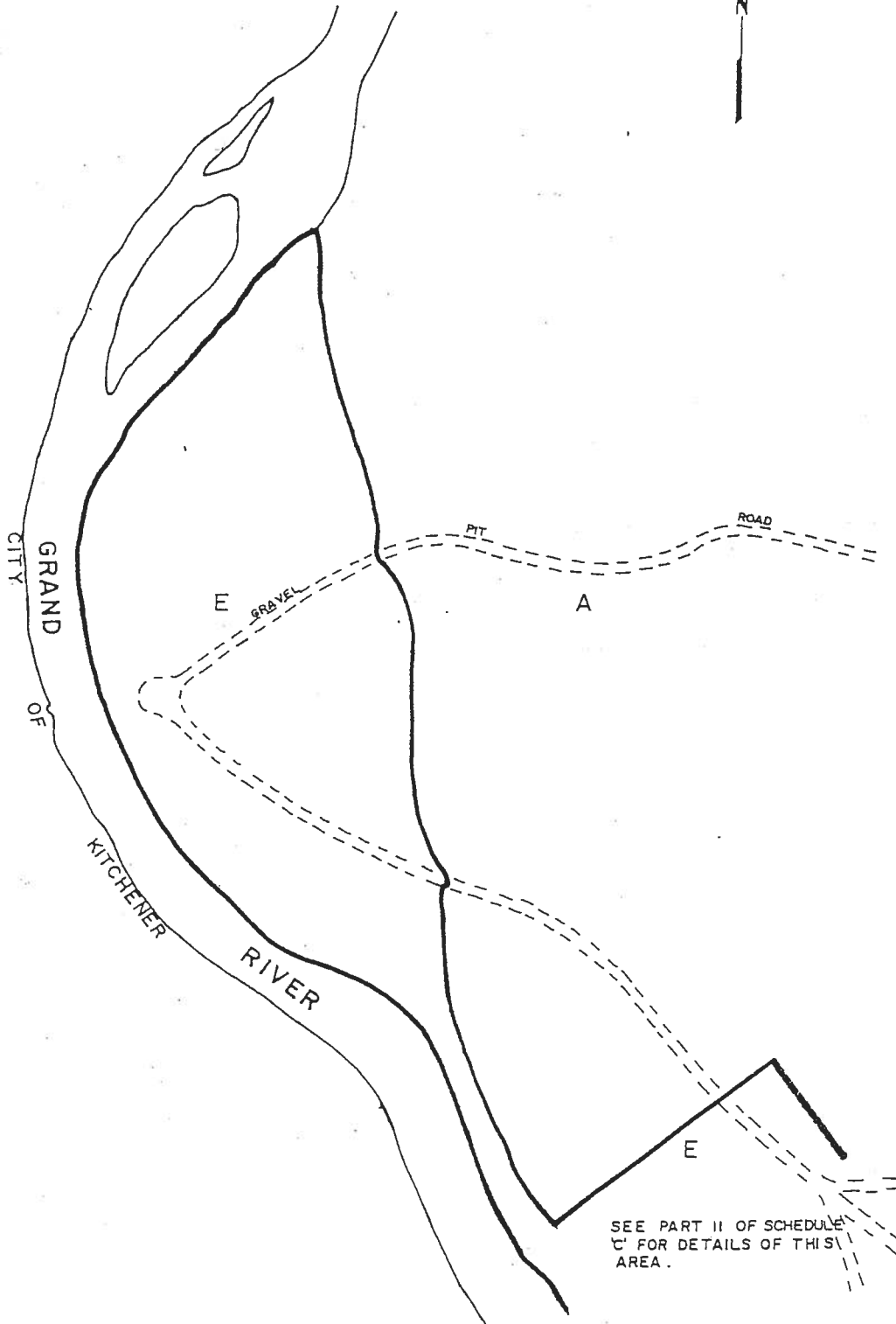
\_\_\_\_\_  
MAYOR

\_\_\_\_\_  
CLERK

# PART LOT 114 AND 115 G.C.T.

TOWNSHIP OF WOOLWICH

## SCHEDULE C1



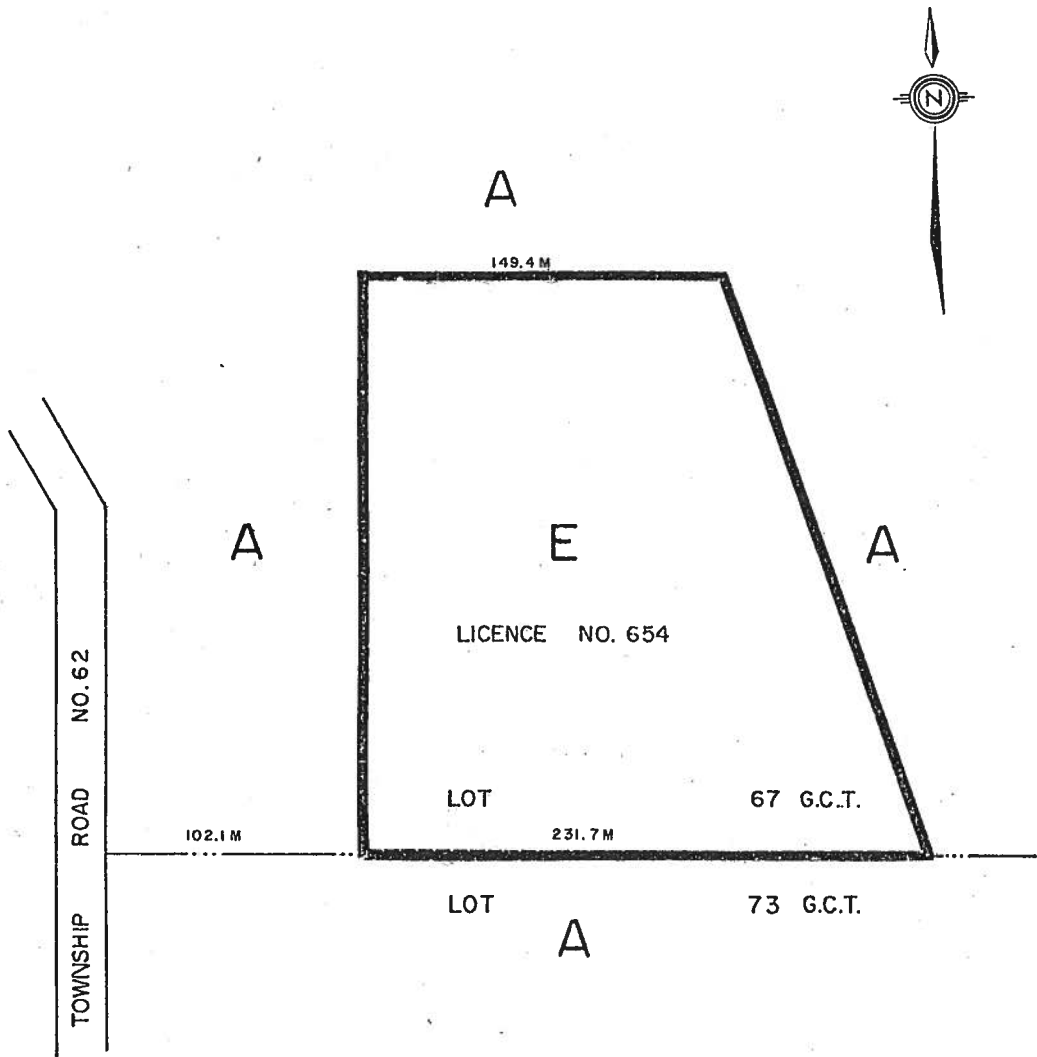
THIS IS PART 11.1 OF SCHEDULE "C" TO BY-LAW  
\_\_\_\_\_, PASSED THIS \_\_\_\_\_ DAY OF \_\_\_\_\_, 1986.

\_\_\_\_\_  
MAYOR

\_\_\_\_\_  
CLERK

SEE PART 25 SCHEDULE 'B'  
SCALE metric - 1 : 5000

PART OF LOT 67 G.C.T.  
TOWNSHIP OF WOOLWICH



THIS IS PART 12 OF SCHEDULE 'C' TO BY-LAW \_\_\_\_\_,  
PASSED THIS \_\_\_\_\_ DAY OF \_\_\_\_\_, 198 .

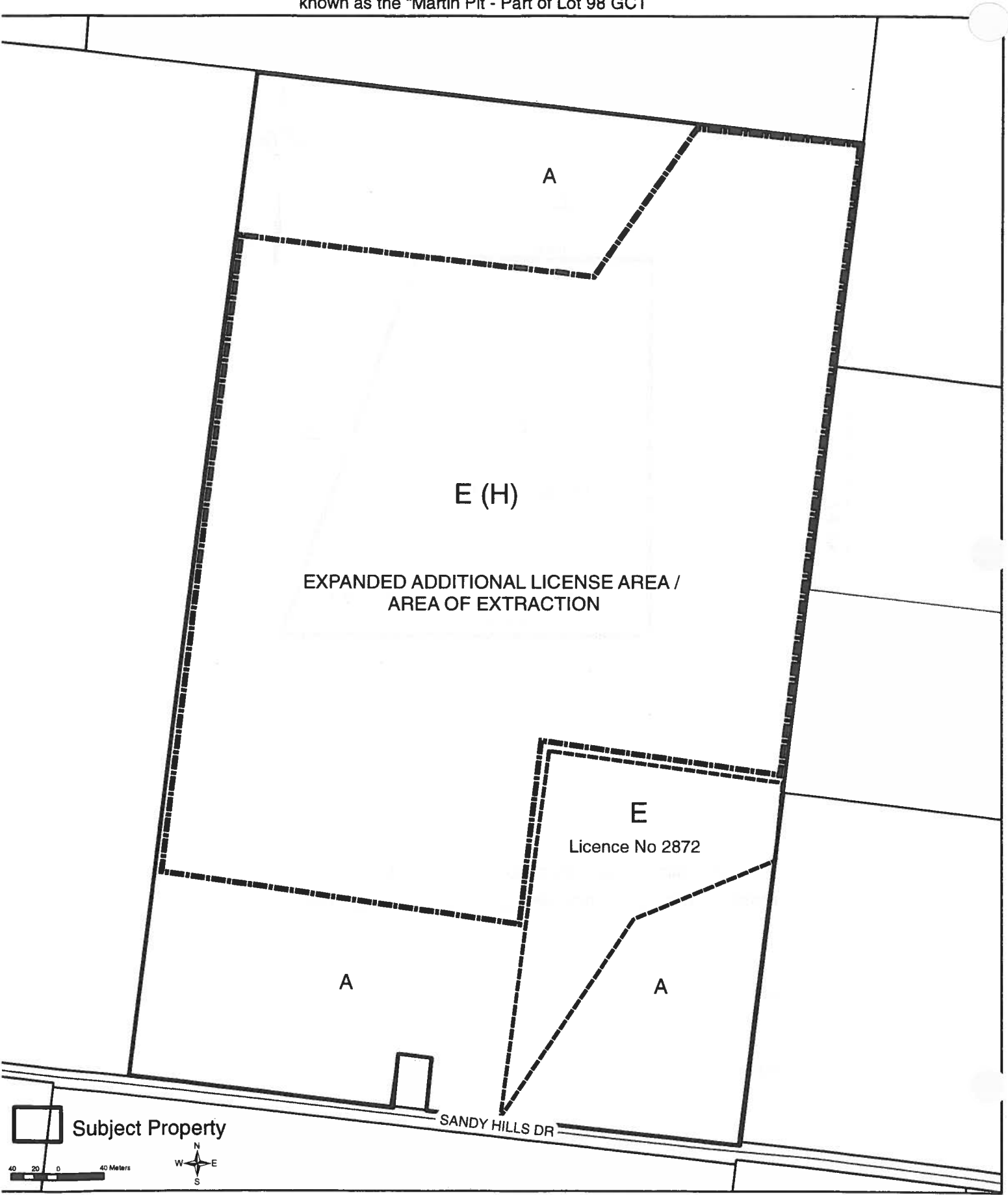
\_\_\_\_\_  
MAYOR


\_\_\_\_\_  
CLERK

**Figure 2**  
**SCHEDULE C 13**

777 Sandy Hills Drive  
N.J. Excavating Inc. on behalf of Harvey Martin  
known as the "Martin Pit - Part of Lot 98 GCT

C13

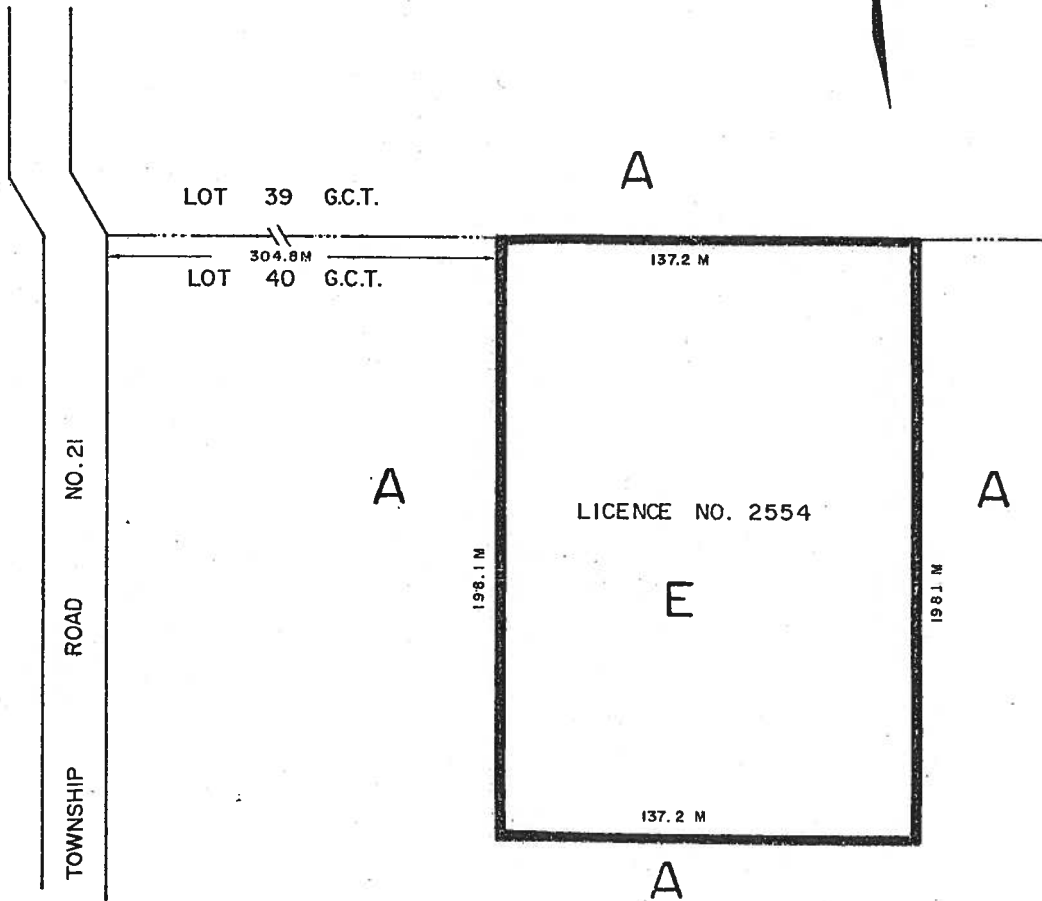


 Subject Property

40 20 0 40 Meters

N  
W E  
S

PART OF LOT 40 G.C.T.  
TOWNSHIP OF WOOLWICH



THIS IS PART 14 OF SCHEDULE 'C' TO BY-LAW \_\_\_\_\_,  
PASSED THIS \_\_\_\_\_ DAY OF \_\_\_\_\_, 198 .

\_\_\_\_\_  
MAYOR

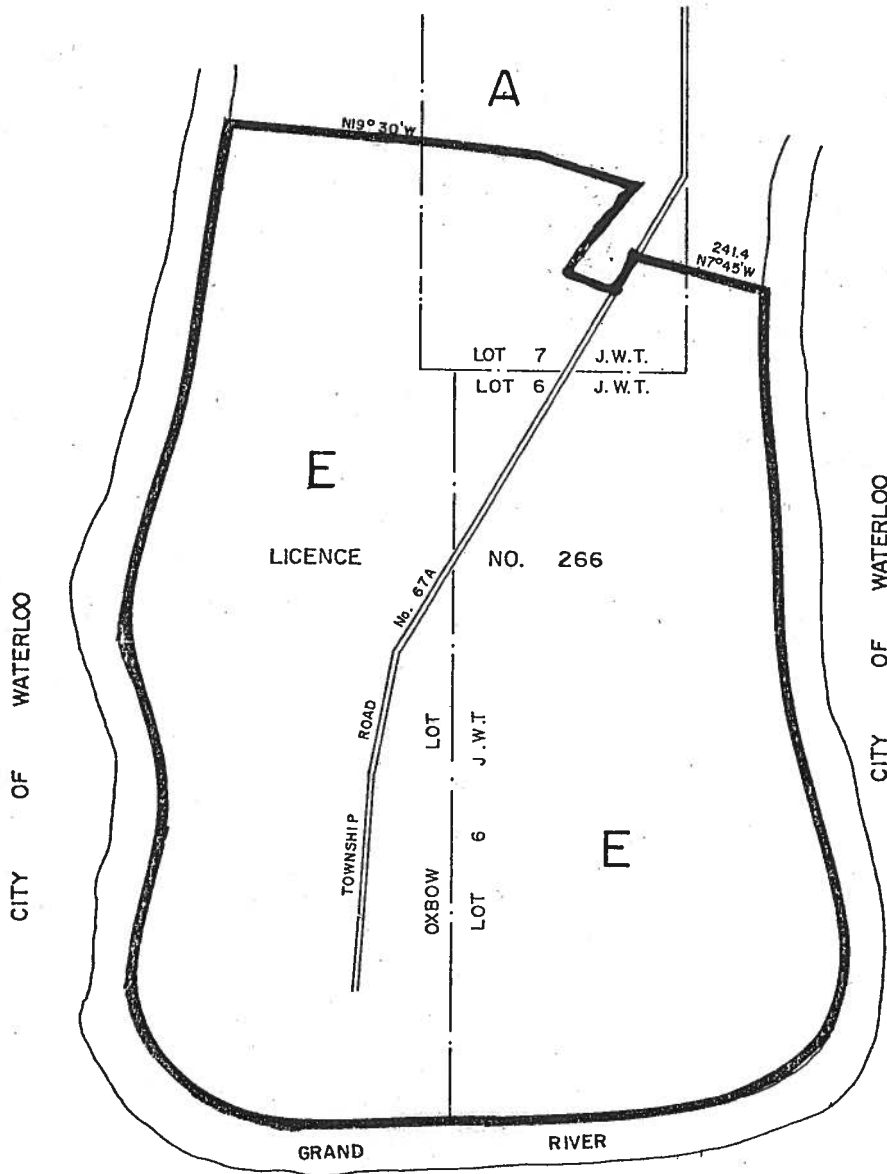
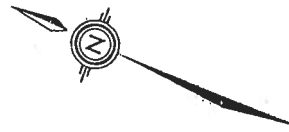
\_\_\_\_\_  
CLERK

**SCHEDULE C15 – DELETED**

**By-law 83-2006 passed November 28, 2006 (General Amendment)**



PART OF OXBOW LOT  
PART OF LOTS 6 & 7 J.W.T.  
TOWNSHIP OF WOOLWICH



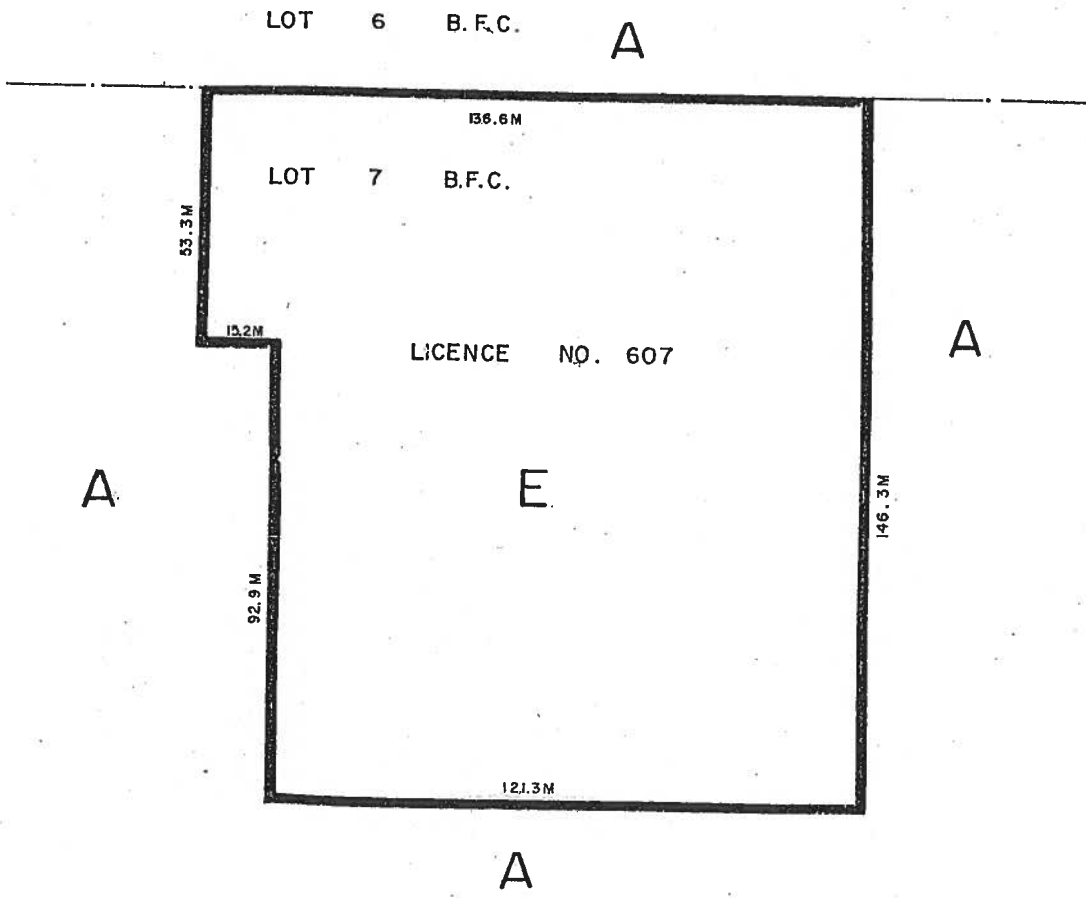
THIS IS PART 1E OF SCHEDULE 'C' TO BY-LAW \_\_\_\_\_,  
PASSED THIS \_\_\_\_\_ DAY OF \_\_\_\_\_, 198 .

\_\_\_\_\_  
MAYOR

\_\_\_\_\_  
CLERK

PART OF LOT 7  
BROKEN FRONT CONC. E.G.R.  
(CROOK'S TRACT)  
TOWNSHIP OF WOOLWICH

C17

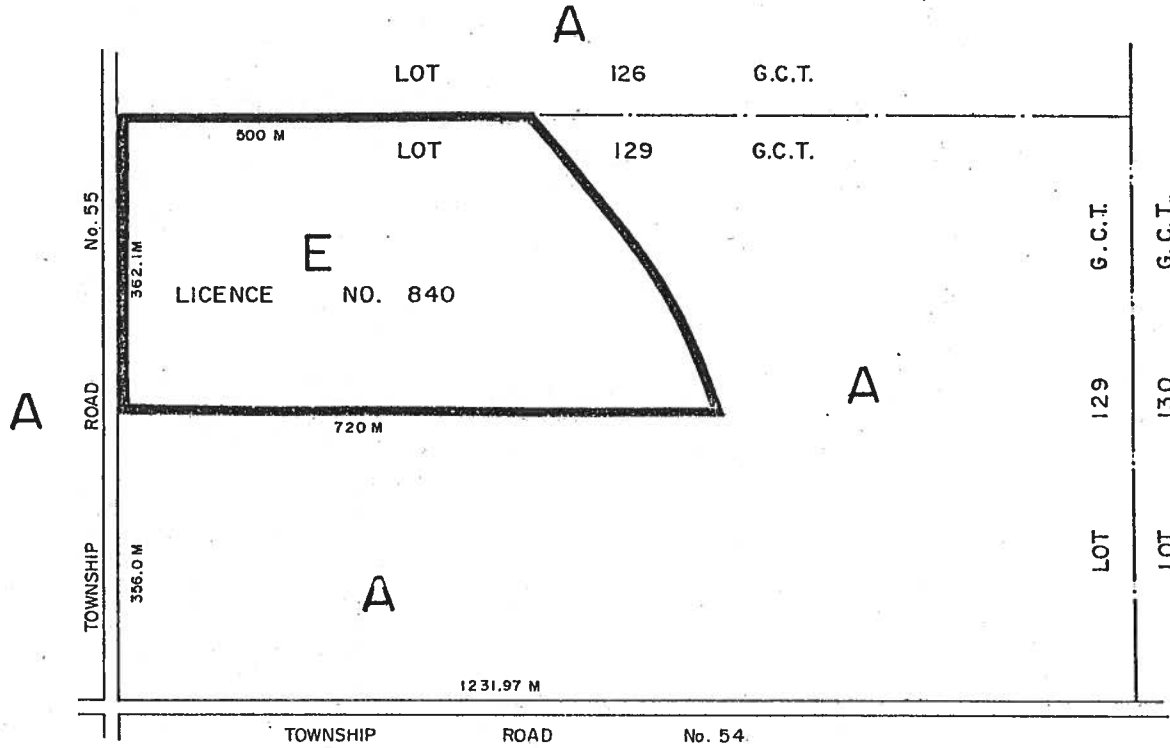


THIS IS PART 17 OF SCHEDULE 'C' TO BY-LAW \_\_\_\_\_,  
PASSED THIS \_\_\_\_\_ DAY OF \_\_\_\_\_, 198 .

\_\_\_\_\_  
MAYOR

\_\_\_\_\_  
CLERK

PART OF LOT 129 G.C.T.,  
TOWNSHIP OF WOOLWICH

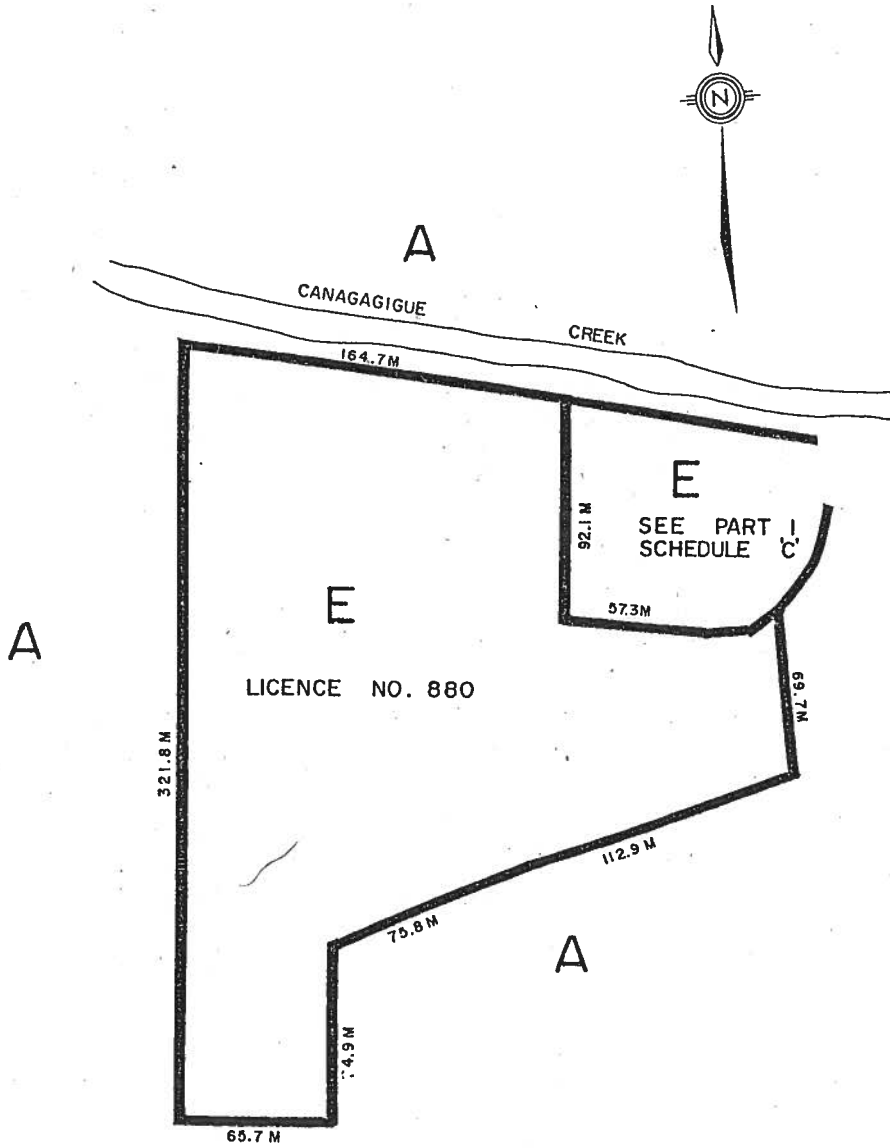


THIS IS PART 18 OF SCHEDULE 'C' TO BY-LAW \_\_\_\_\_,  
PASSED THIS \_\_\_\_\_ DAY OF \_\_\_\_\_, 198 .

\_\_\_\_\_  
MAYOR

\_\_\_\_\_  
CLERK

PART OF LOT 90 G.C.T.  
TOWNSHIP OF WOOLWICH

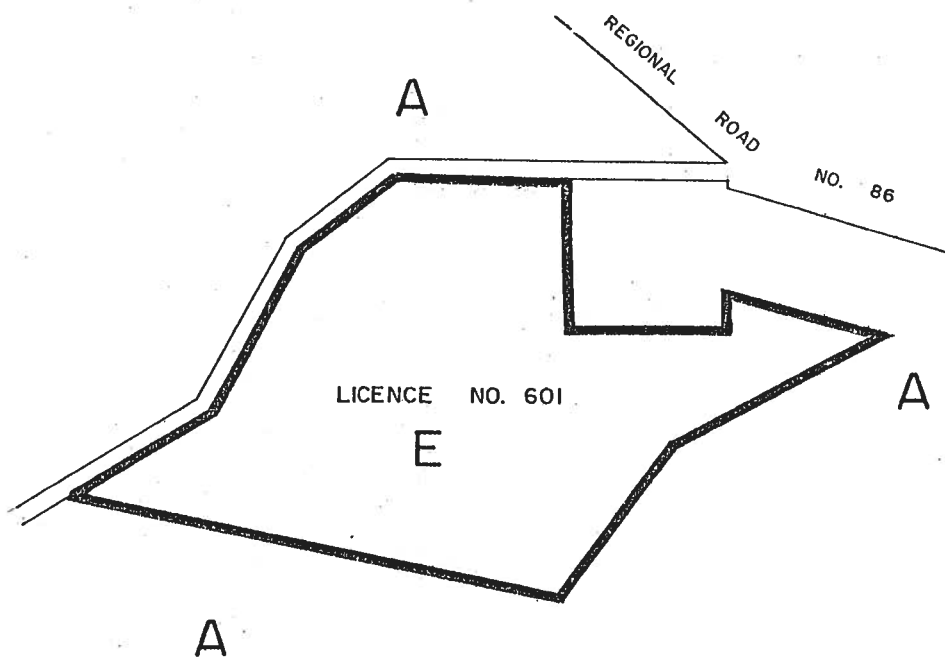


THIS IS PART 19 OF SCHEDULE 'C' TO BY-LAW \_\_\_\_\_,  
PASSED THIS \_\_\_\_ DAY OF \_\_\_\_\_, 198 .

\_\_\_\_\_  
MAYOR

\_\_\_\_\_  
CLERK

PART OF LOT 74 G.C.T.  
TOWNSHIP OF WOOLWICH

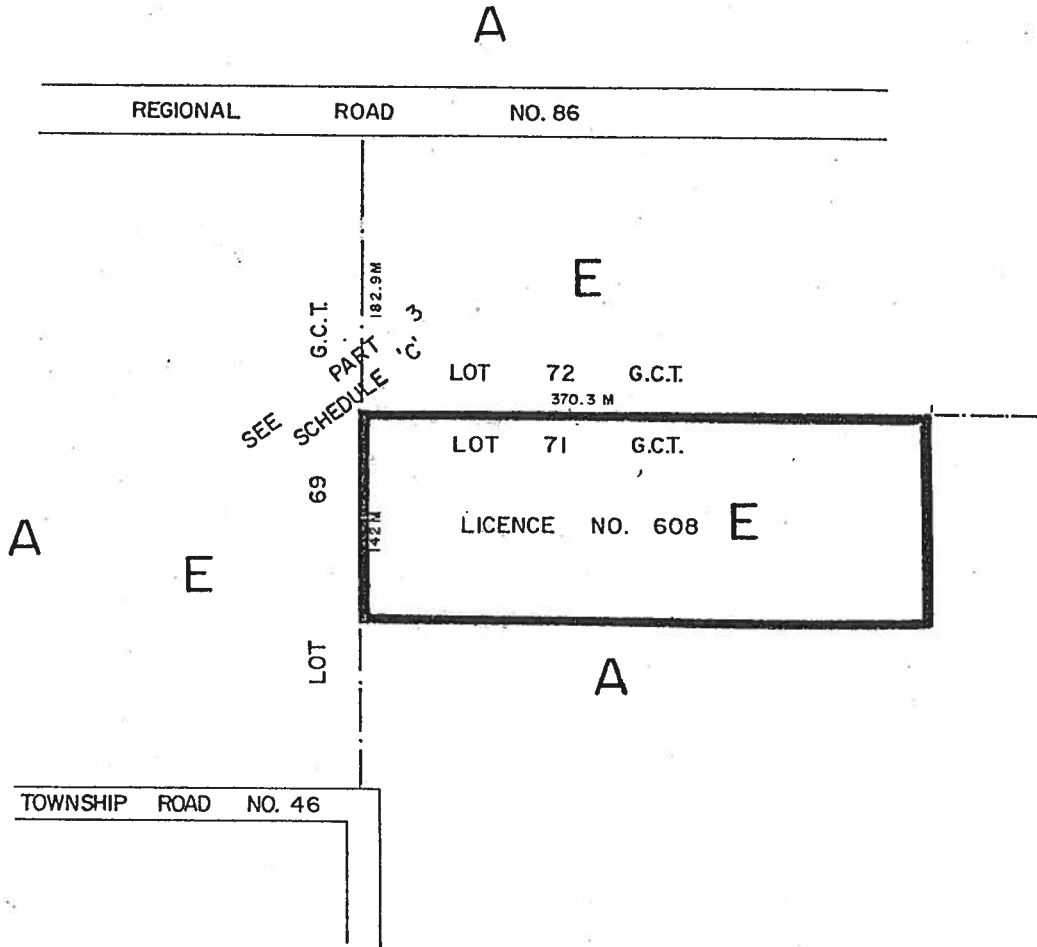


THIS IS PART 20 OF SCHEDULE 'C' TO BY-LAW \_\_\_\_\_,  
PASSED THIS \_\_\_\_\_ DAY OF \_\_\_\_\_, 198 .

\_\_\_\_\_  
MAYOR

\_\_\_\_\_  
CLERK

PART OF LOT 71 G.C.T.  
TOWNSHIP OF WOOLWICH



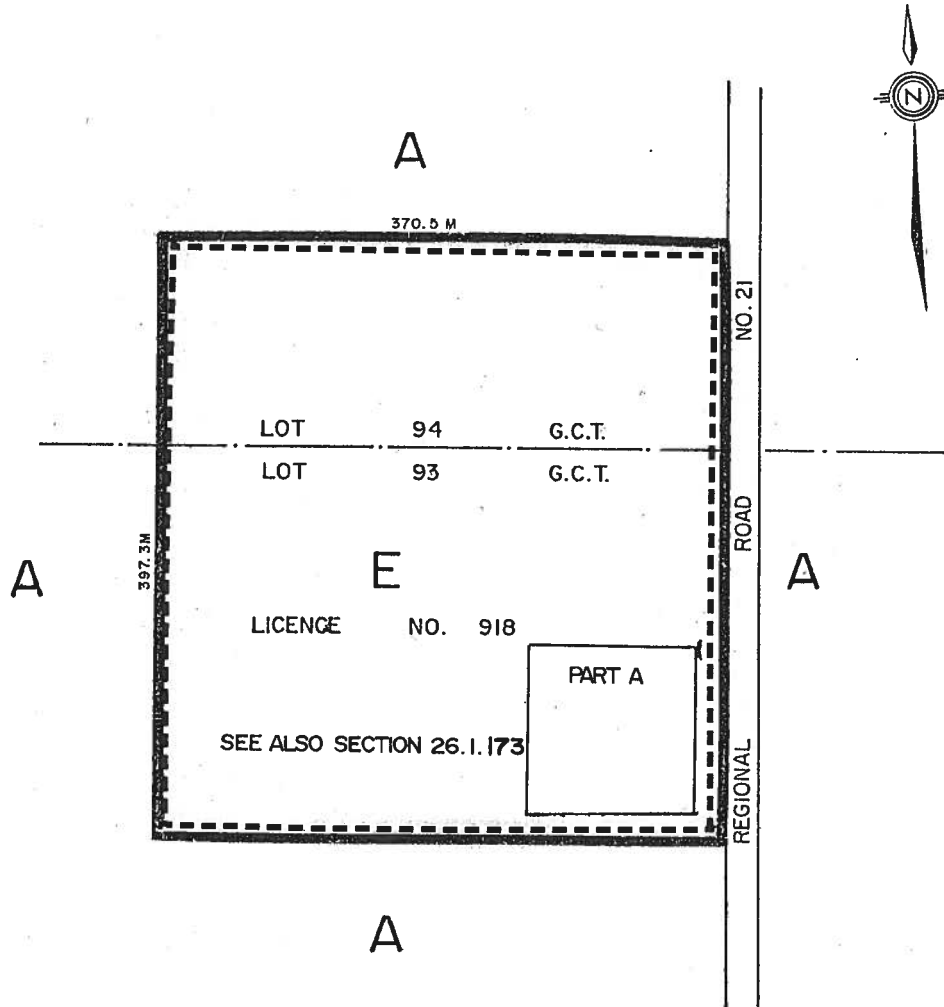
THIS IS PART 21 OF SCHEDULE 'C' TO BY-LAW \_\_\_\_\_,

PASSED THIS \_\_\_\_\_ DAY OF \_\_\_\_\_, 198 .

\_\_\_\_\_  
MAYOR

\_\_\_\_\_  
CLERK

PART OF LOTS 93 G.C.T. & 94 G.C.T.  
TOWNSHIP OF WOOLWICH

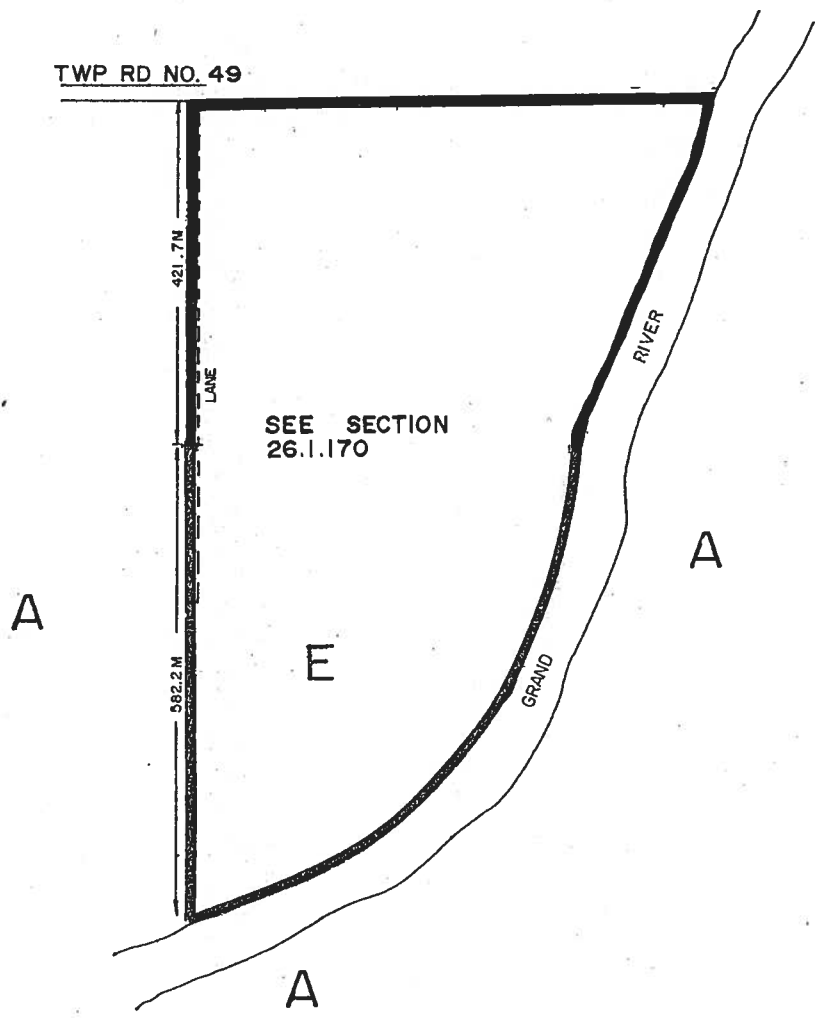


THIS IS PART 22 OF SCHEDULE 'C' TO BY-LAW \_\_\_\_\_,  
PASSED THIS \_\_\_\_\_ DAY OF \_\_\_\_\_, 19

\_\_\_\_\_  
MAYOR

\_\_\_\_\_  
CLERK

PART OF LOT I  
BROKEN FRONT CON. W.G.R.  
CROOKS TRACT  
TOWNSHIP OF WOOLWICH



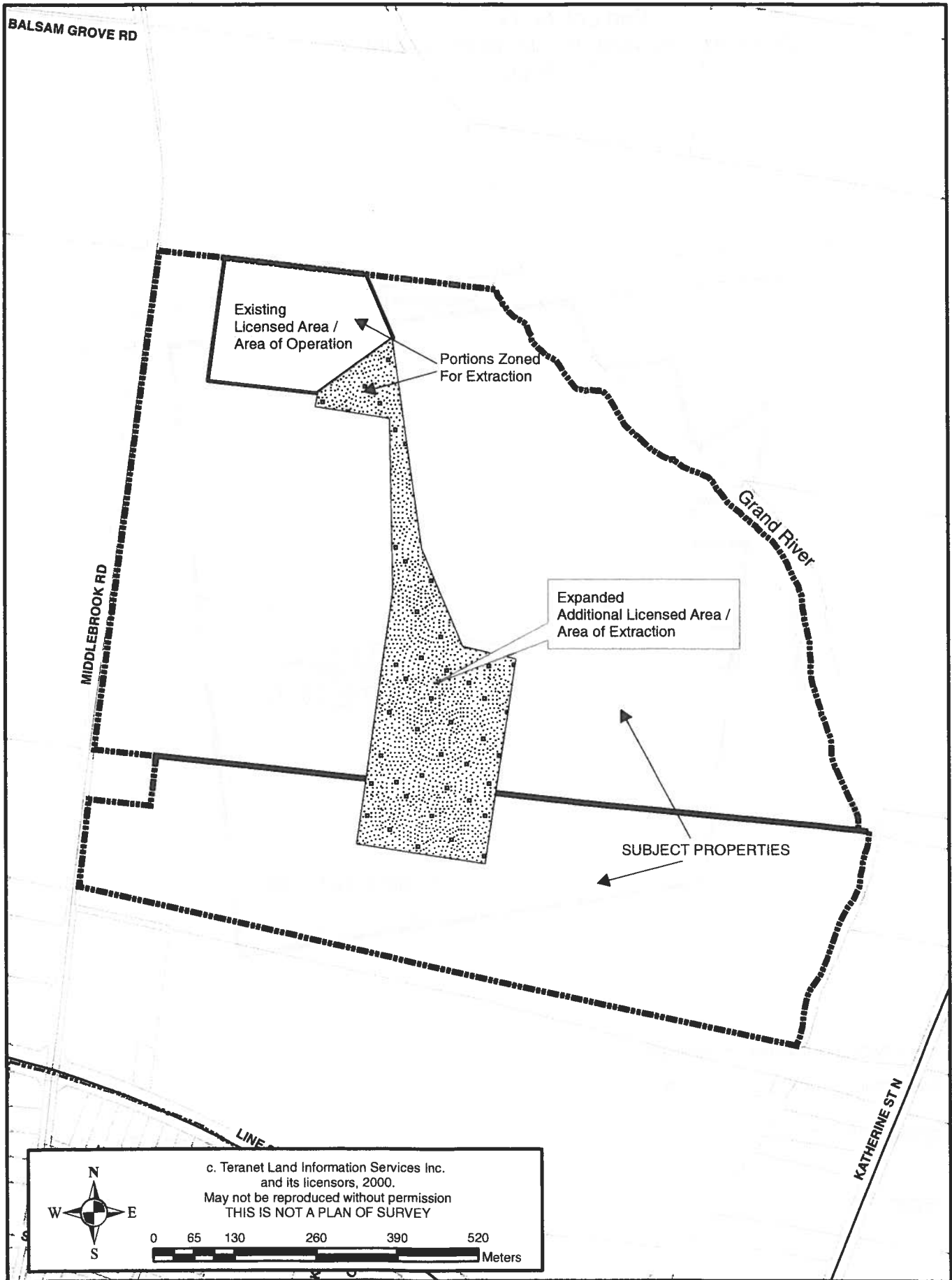
THIS IS PART 23 OF SCHEDULE 'C' TO BY-LAW \_\_\_\_\_,  
PASSED THIS \_\_\_\_\_ DAY OF \_\_\_\_\_, 198 \_\_\_\_\_.

\_\_\_\_\_  
MAYOR

\_\_\_\_\_  
CLERK

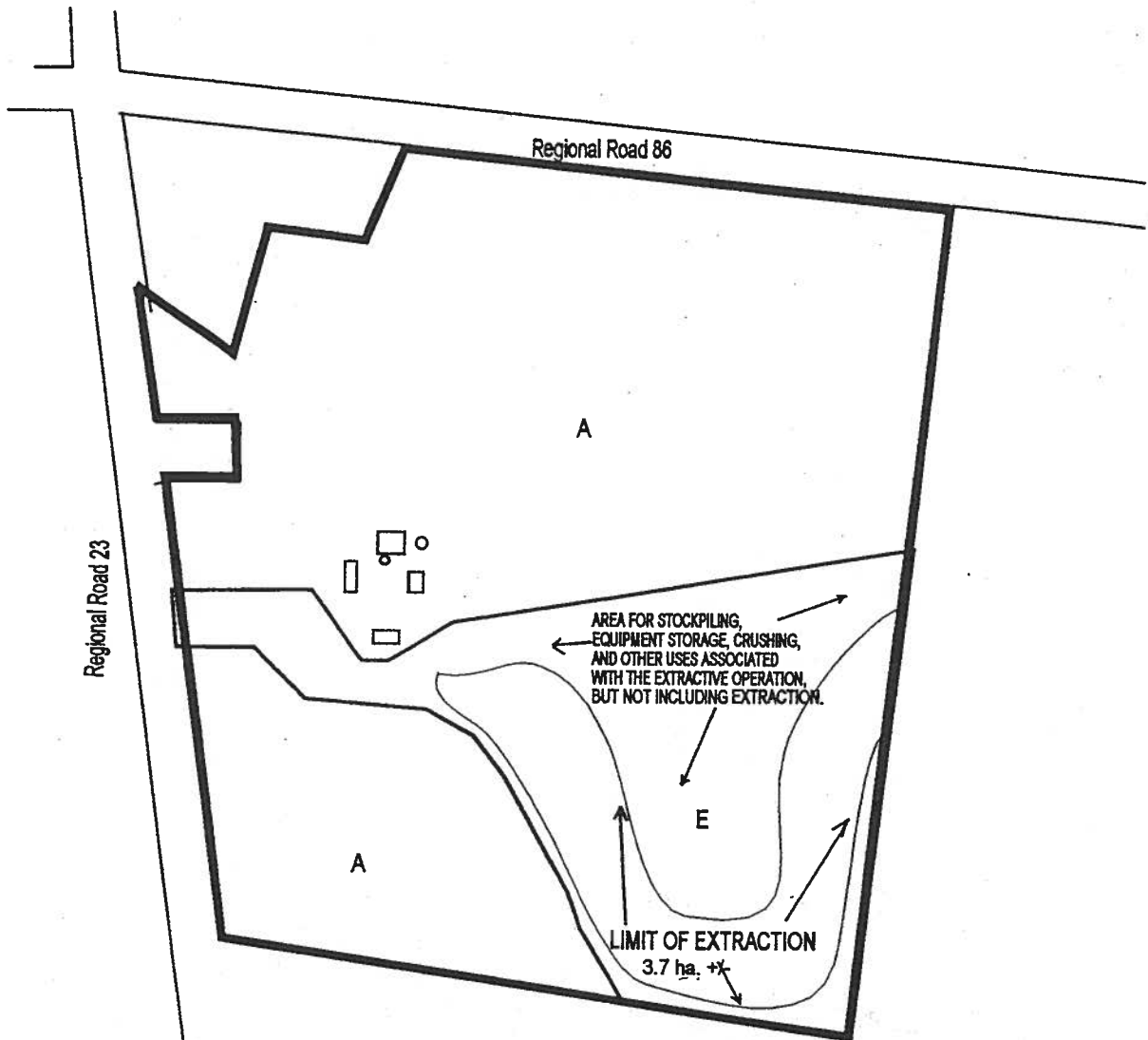


Schedule A - FIGURE 1  
German Company Tract Part Lot 72 and 73 – Middlebrook Road  
D & J Lockhart Excavators - Ivan Martin and Grant Bauman  
Location / Area of Operation Map



c. Teranet Land Information Services Inc.  
and its licensors, 2000.  
May not be reproduced without permission  
THIS IS NOT A PLAN OF SURVEY

Part Lot 74, G.C.T.  
(Former Township of Woolwich, County of  
Waterloo)



THIS IS PART 26 OF SCHEDULE "C" OF BY-LAW \_\_\_\_\_

PASSED THIS \_\_\_\_\_ DAY OF \_\_\_\_\_, 1997.

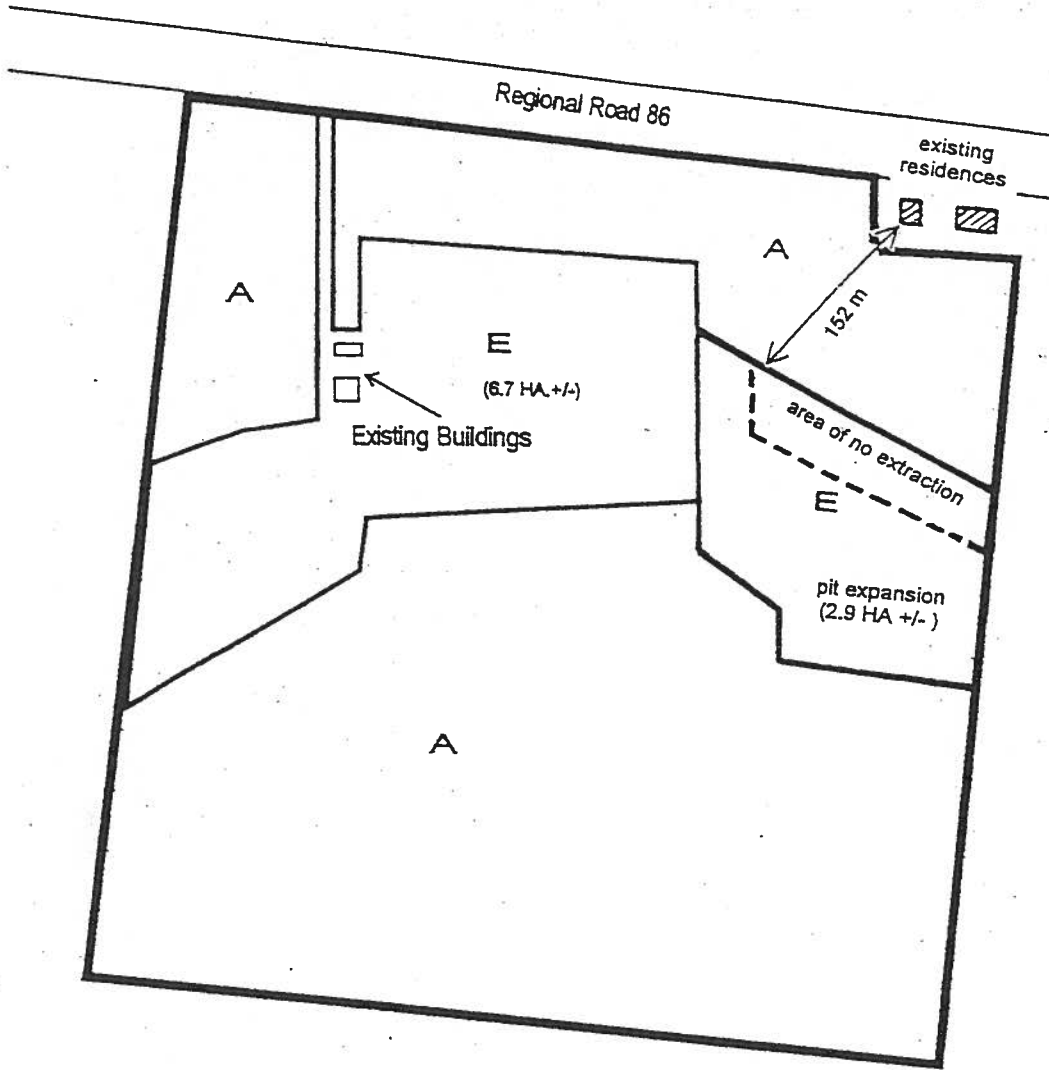
\_\_\_\_\_  
MAYOR

\_\_\_\_\_  
CLERK



Approximate Scale 1:5500

Part Lot 74, G.C.T.  
(Former Township of Woolwich, County of  
Waterloo)



THIS IS PART '27' OF SCHEDULE "C" OF BY-LAW \_\_\_\_\_

PASSED THIS \_\_\_\_\_ DAY OF \_\_\_\_\_, 2001

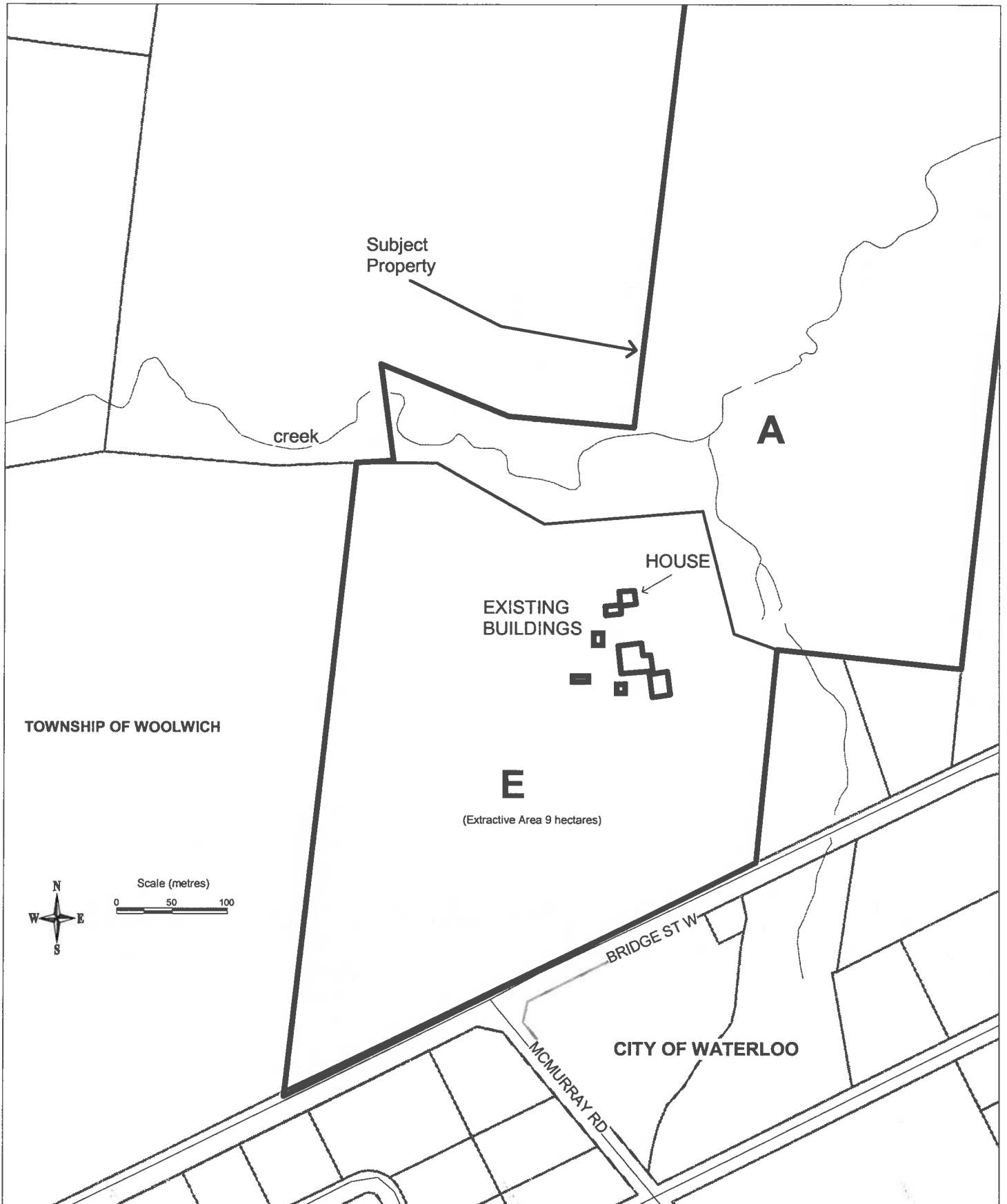
\_\_\_\_\_  
MAYOR

\_\_\_\_\_  
CLERK

  
Approximate Scale 1:5500

889 BRIDGE STREET WEST  
PART LOT 4, GCT

C28



Part of Lot 3, Crooks Tract, West of Grand River  
(OMB PL110809)

