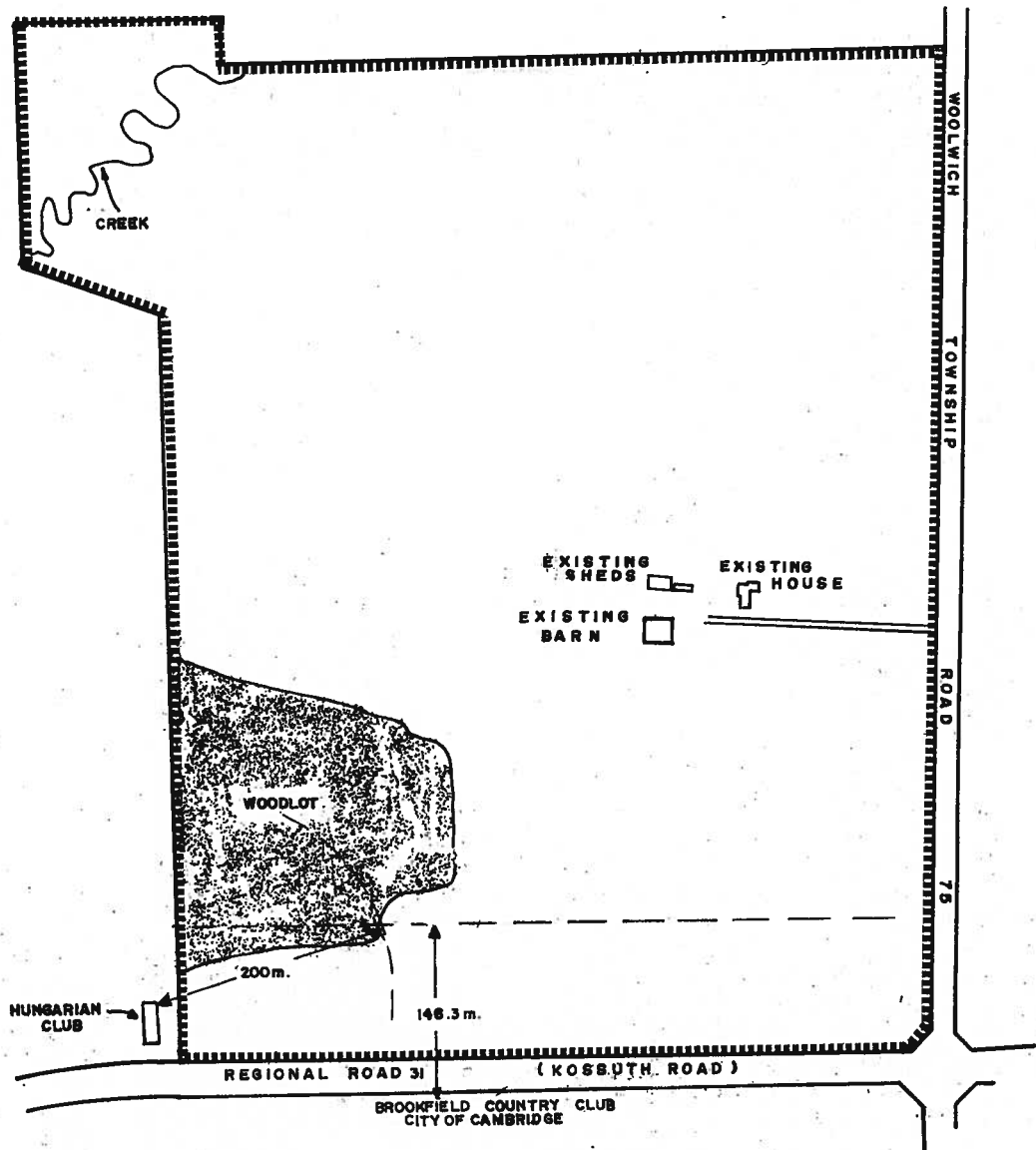


PART LOTS 88 & 92, G.C.T.  
TOWNSHIP OF WOOLWICH



HUNGARIAN CLUB

200m.

148.3m.

REGIONAL ROAD 31 (KOSSUTH ROAD)

BROOKFIELD COUNTRY CLUB  
CITY OF CAMBRIDGE

SUBJECT LANDS

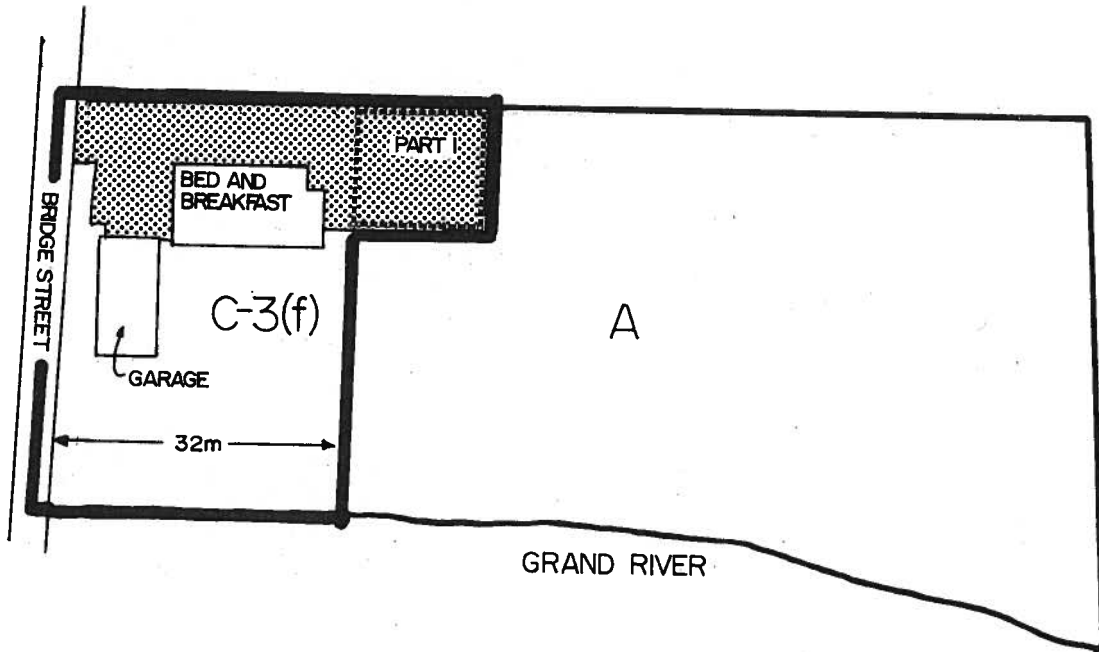
0 100 metres (approximate)

THIS IS SCHEDULE 'A' TO BY-LAW \_\_\_\_\_  
PASSED THE \_\_\_\_\_ DAY OF \_\_\_\_\_, 199

\_\_\_\_\_  
MAYOR  
\_\_\_\_\_  
CLERK

SECTION 26.1.151

PART LOT 71, G.C.T.  
TOWNSHIP OF WOOLWICH



ASPHALT PARKING AREA 

0 7.5 15 22.5 30m



THIS IS SCHEDULE "A" TO BY-LAW \_\_\_\_\_  
PASSED THIS \_\_\_\_ DAY OF \_\_\_\_\_, 1991.

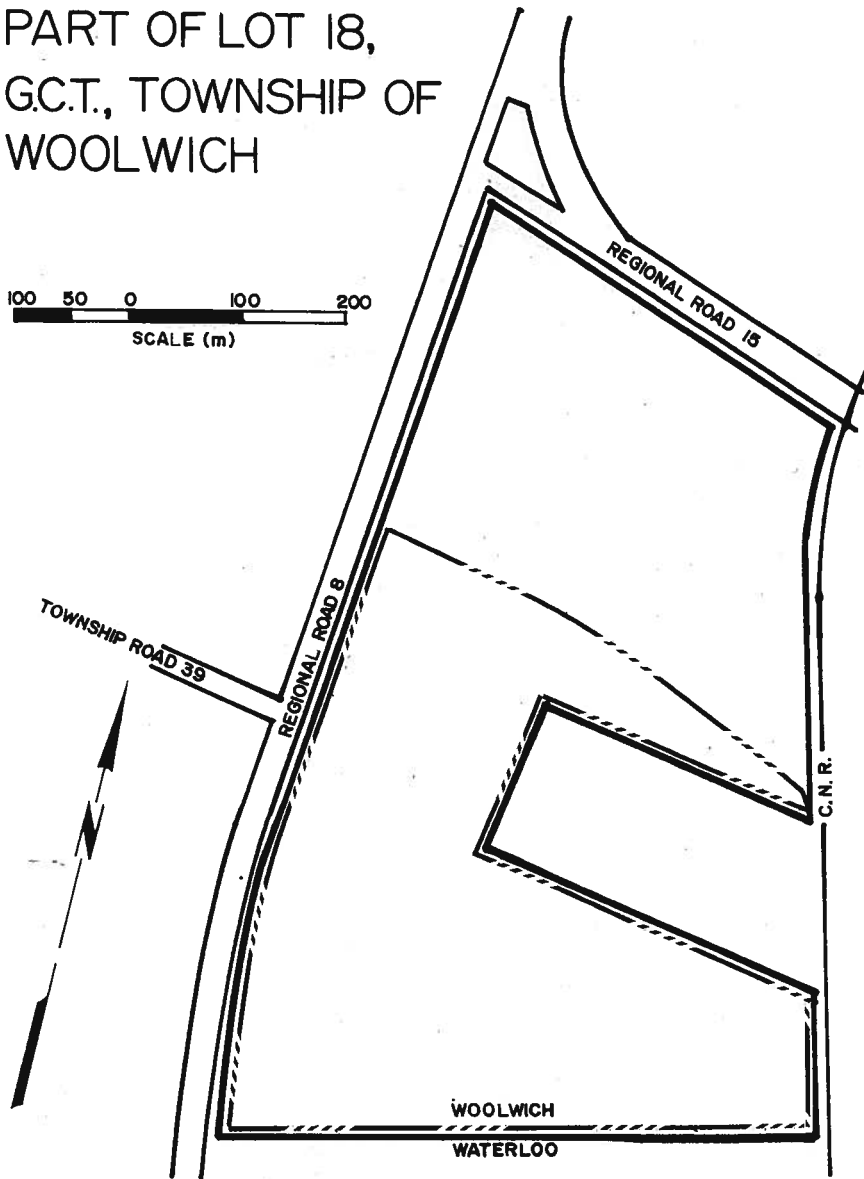
MAYOR \_\_\_\_\_

CLERK \_\_\_\_\_

MAP 26.1.153 - Deleted  
(By-law 17-2018)

**MAP 26.1.154 – Deleted  
(By-law 35-2008)**

PART OF LOT 18,  
G.C.T., TOWNSHIP OF  
WOOLWICH



SUBJECT LANDS   
LANDS SUBJECT TO SECTION 26.1.155 

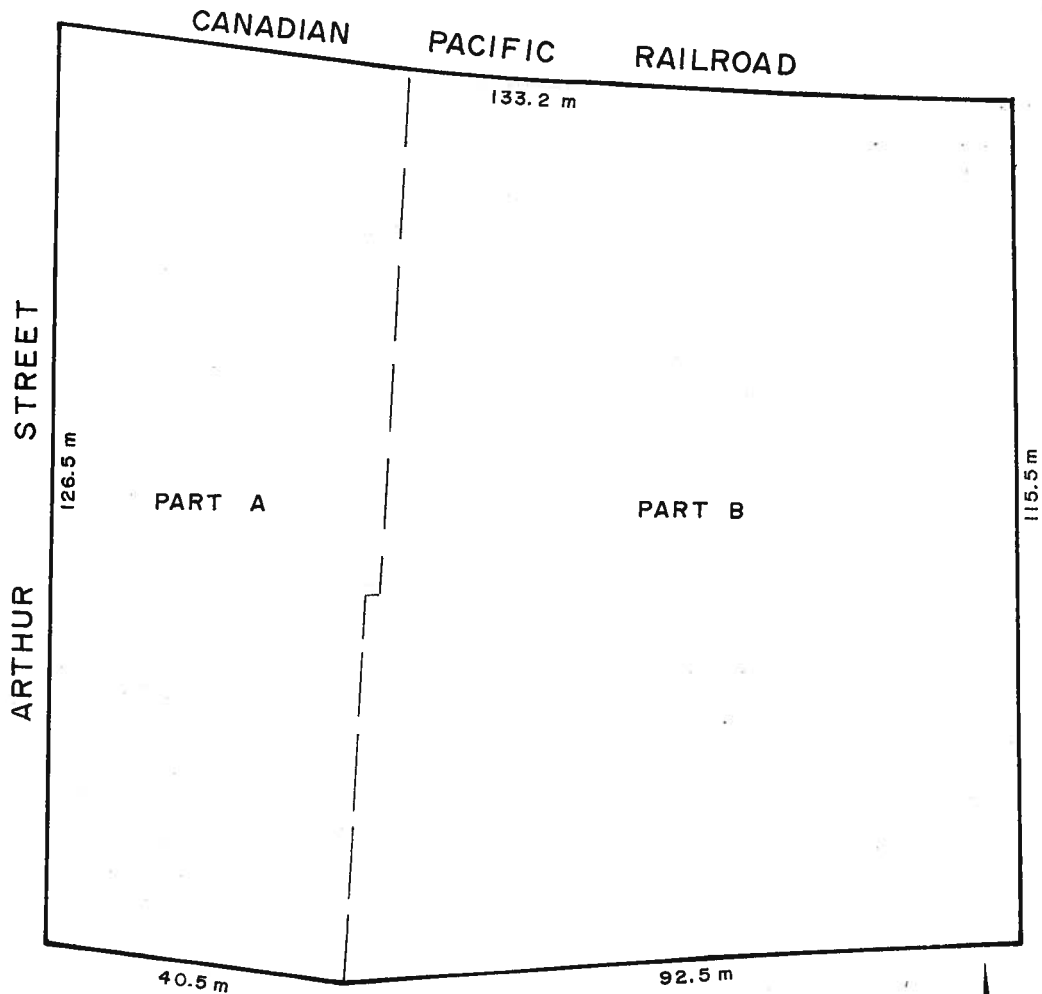
THIS IS SECTION 'A' TO BY-LAW \_\_\_\_\_  
PASSED THIS \_\_\_\_ DAY OF \_\_\_\_\_, 199 .

MAYOR \_\_\_\_\_

CLERK \_\_\_\_\_

SECTION 26.1.155

LOT 20 & PART OF LOT 21  
REGISTERED PLAN 1301  
TOWNSHIP OF WOOLWICH  
(ELMIRA)



SUBJECT LANDS OUTLINED THUS \_\_\_\_\_

THIS IS SCHEDULE "A" TO BY-LAW  
PASSED THIS \_\_\_\_ DAY OF \_\_\_\_\_, 19

\_\_\_\_\_  
MAYOR

\_\_\_\_\_  
CLERK

SEE PART 2 - SCHEDULE 'B'

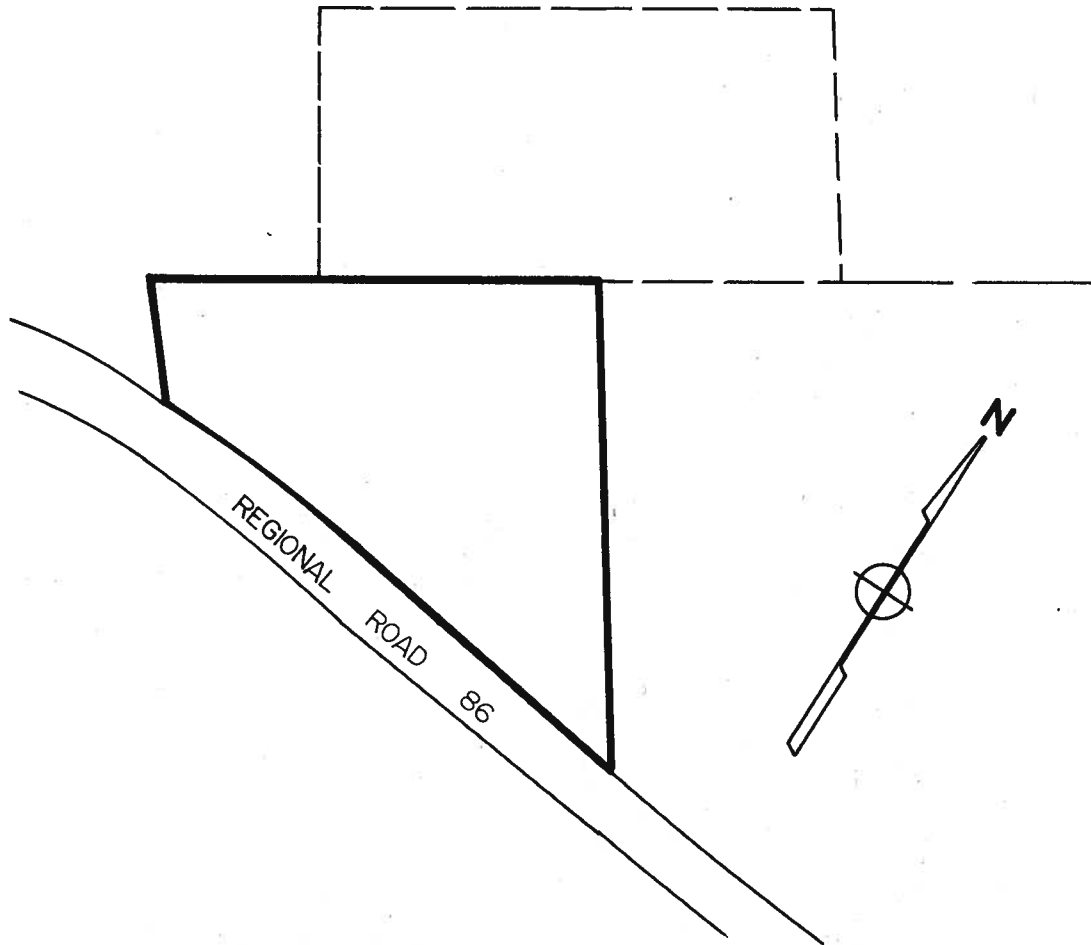
SCALE: metric

0m 5m 15m 25m

**TOWNSHIP OF WOOLWICH**

PART LOT 127 G.C.T.

PART LOT 1 BLOCK 3 CONCESSION III  
HITCHING TRACT



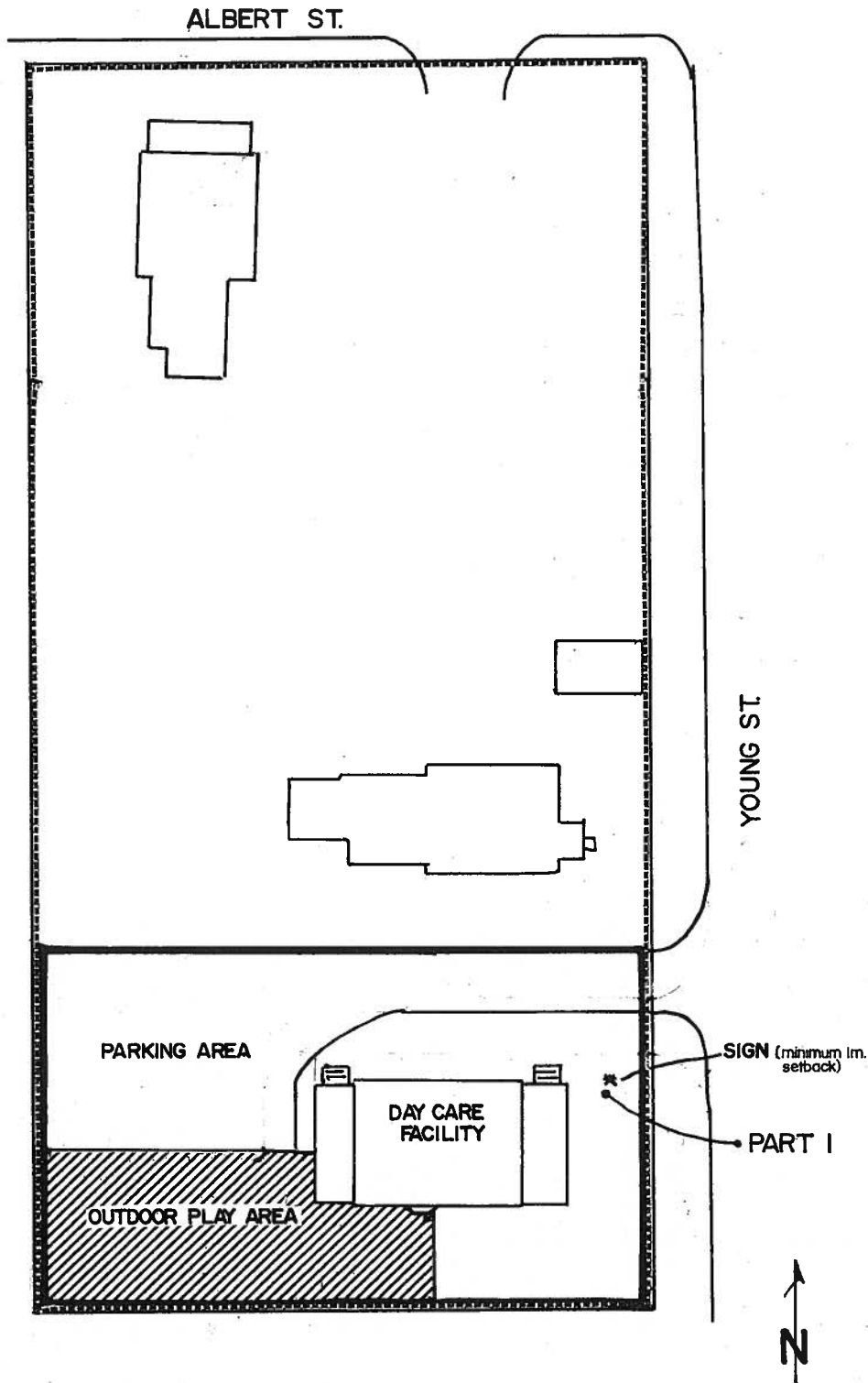
SUBJECT LANDS OUTLINED THUS \_\_\_\_\_

THIS IS SCHEDULE 'A' OF BY-LAW \_\_\_\_\_  
PASSED THIS \_\_\_\_\_ DAY OF \_\_\_\_\_, 19 \_\_\_\_.

\_\_\_\_\_  
MAYOR

\_\_\_\_\_  
CLERK

# PLAN 1500 TOWNSHIP OF WOOLWICH



THIS IS SCHEDULE 'A' TO BY-LAW \_\_\_\_\_,  
 PASSED THIS \_\_\_\_\_ DAY OF \_\_\_\_\_, 199 .



\_\_\_\_\_  
 MAYOR

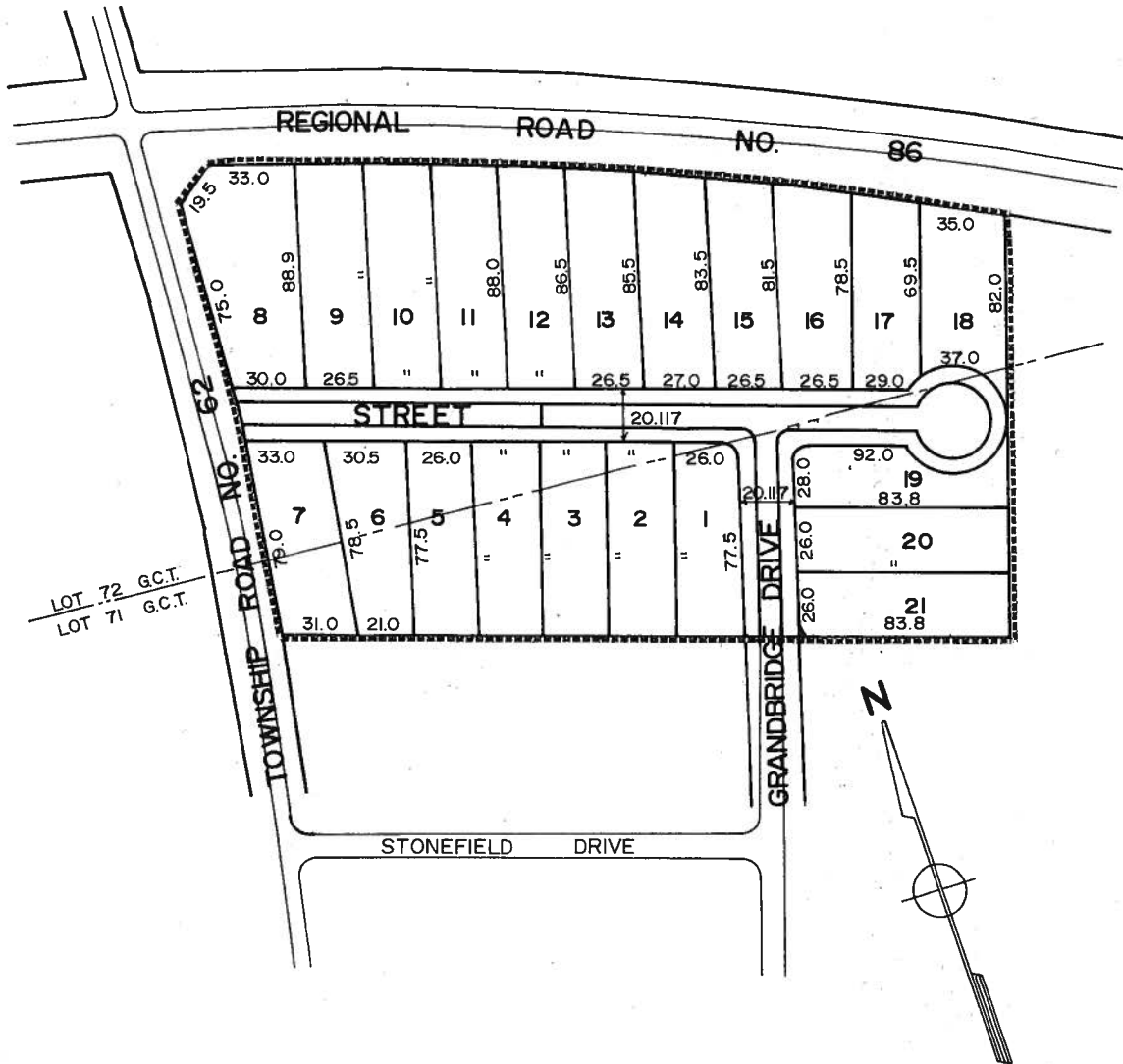
\_\_\_\_\_  
 CLERK



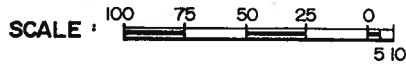
# LOTS 1-21 PLAN 30T-89022

PART OF LOTS 71 & 72 G.C.T.

TOWNSHIP OF WOOLWICH



SUBJECT LANDS OUTLINED THUS

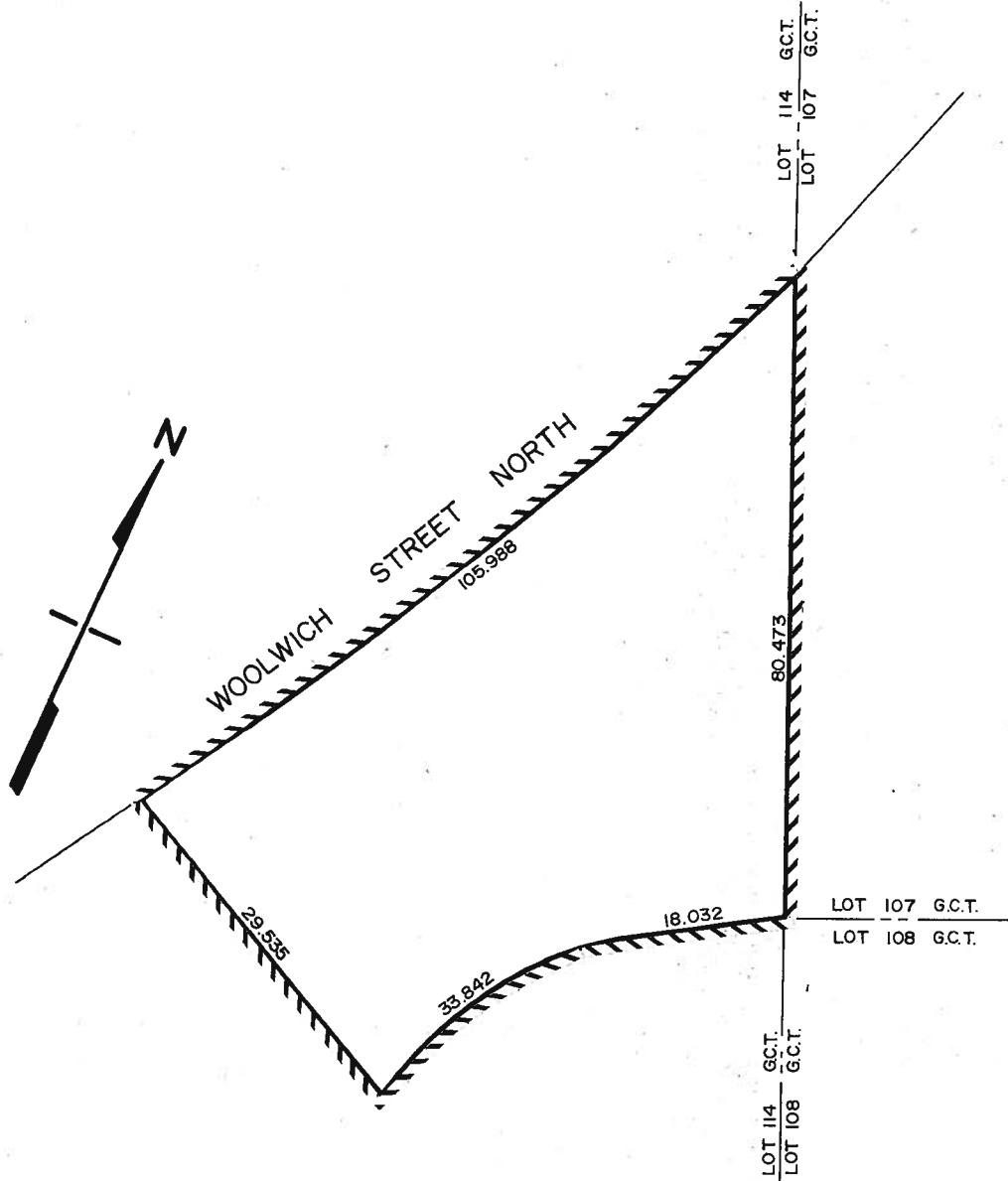


THIS IS SCHEDULE 'A' TO BY-LAW \_\_\_\_\_  
 PASSED THIS \_\_\_\_ DAY OF \_\_\_\_\_

\_\_\_\_\_  
 MAYOR

\_\_\_\_\_  
 CLERK

TOWNSHIP OF WOOLWICH  
 PART LOT 114  
 GERMAN COMPANY TRACT

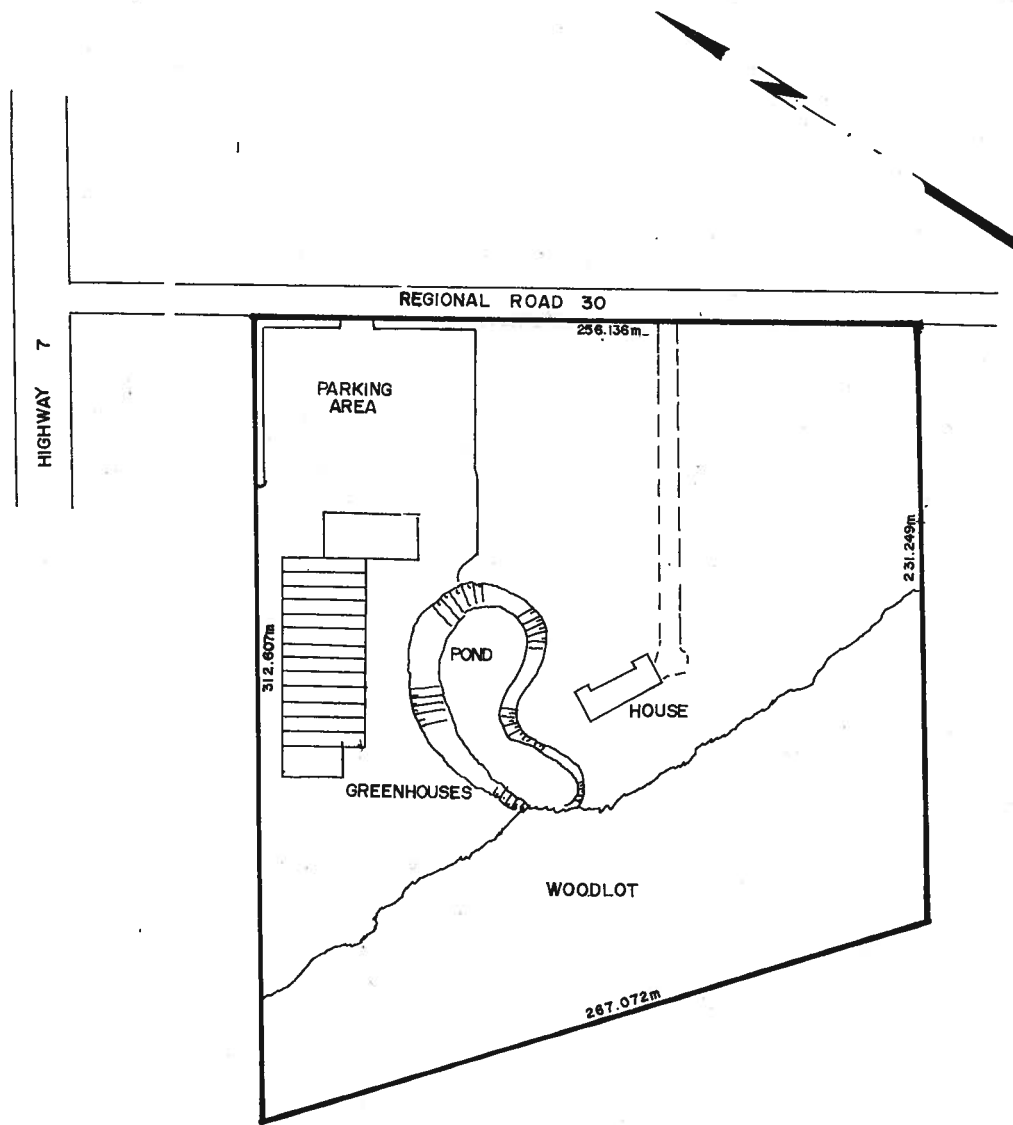


SUBJECT LAND OUTLINED THUS 

THIS IS SCHEDULE 'A' OF BYLAW \_\_\_\_\_  
 PASSED THIS \_\_\_\_ DAY OF \_\_\_\_\_ 19 \_\_\_\_ . MAYOR

\_\_\_\_\_  
 CLERK

PART LOT 106 G.C.T.  
UPPER BLOCK  
TOWNSHIP OF WOOLWICH



SCALE 1:1500

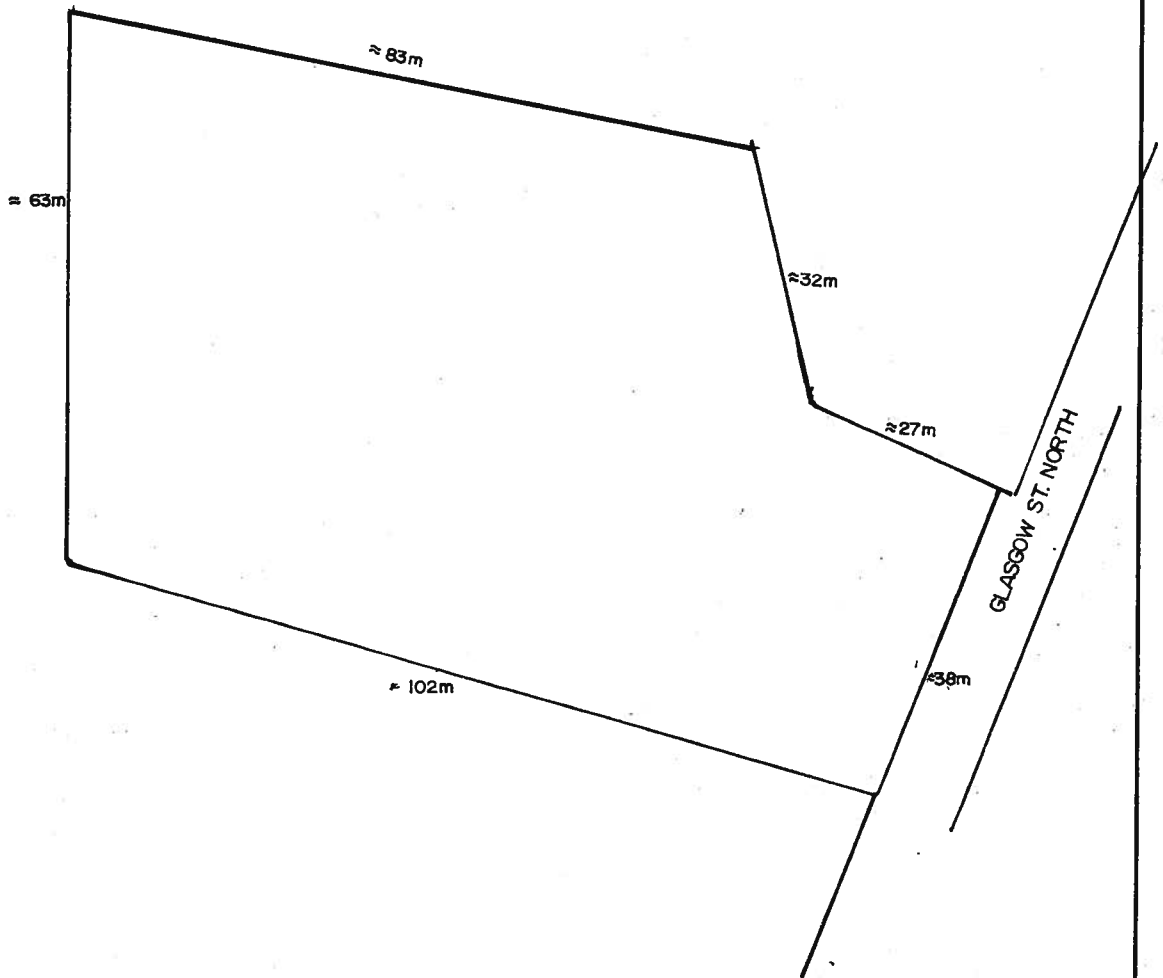
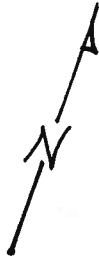
SUBJECT LANDS 

THIS IS SCHEDULE 'A' OF BY-LAW  
PASSED THIS DAY OF 1991.

MAYOR \_\_\_\_\_

CLERK \_\_\_\_\_

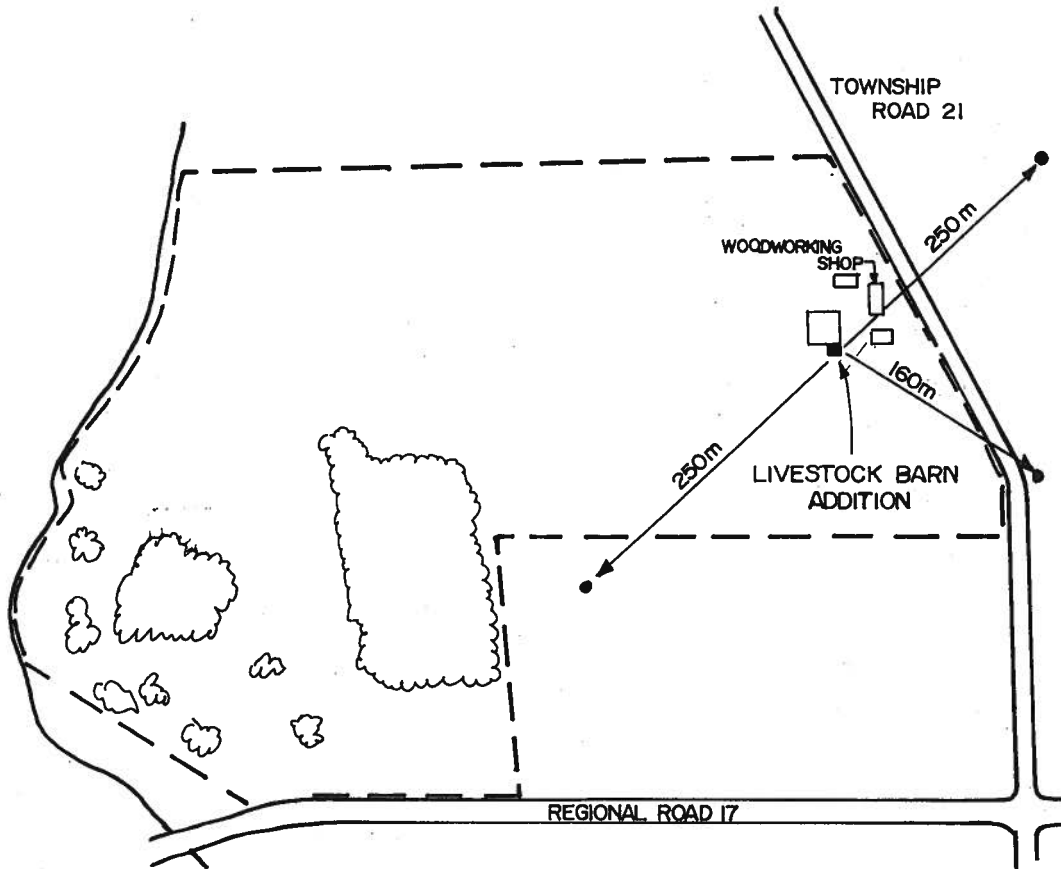
PART LOT 41, G.C.T.  
TOWNSHIP OF WOOLWICH



THIS IS SCHEDULE 'A' OF BYLAW \_\_\_\_\_  
PASSED THIS \_\_\_\_ DAY OF \_\_\_\_\_ 19 \_\_\_\_ . MAYOR

\_\_\_\_\_  
CLERK

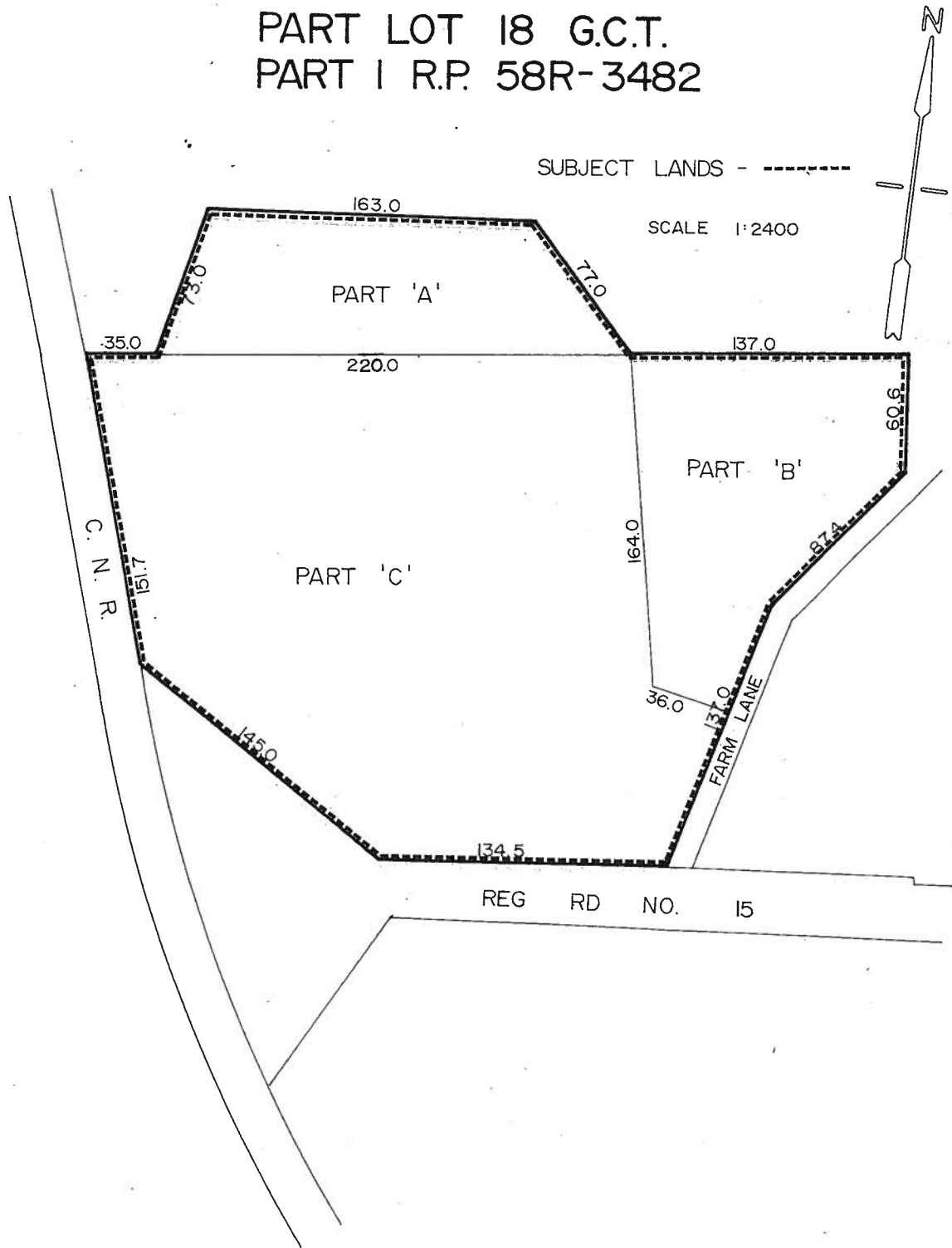
PART LOT 38, G.C.T.  
TOWNSHIP OF WOOLWICH



THIS IS SCHEDULE 'A' OF BYLAW \_\_\_\_\_  
PASSED THIS \_\_\_\_ DAY OF \_\_\_\_\_ 19 \_\_\_\_ . MAYOR

\_\_\_\_\_  
CLERK

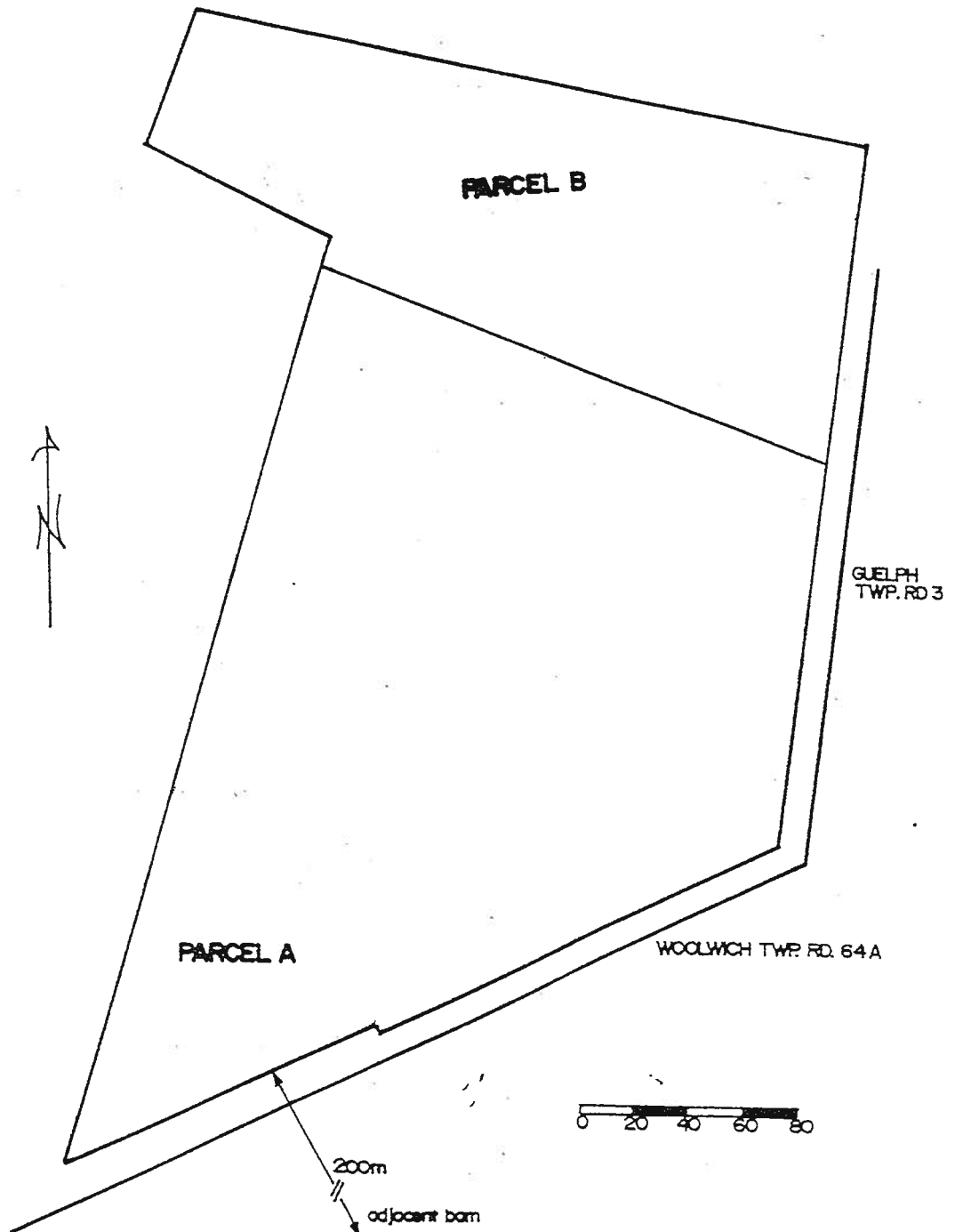
TOWNSHIP OF WOOLWICH  
PART LOT 18 G.C.T.  
PART I R.P. 58R-3482



THIS IS SCHEDULE 'A' OF BYLAW \_\_\_\_\_  
PASSED THIS \_\_\_\_ DAY OF \_\_\_\_\_ 19 \_\_\_\_ MAYOR

\_\_\_\_\_  
CLERK

PART LOT 99, G.C.T.  
FORMER TOWNSHIP OF WATERLOO

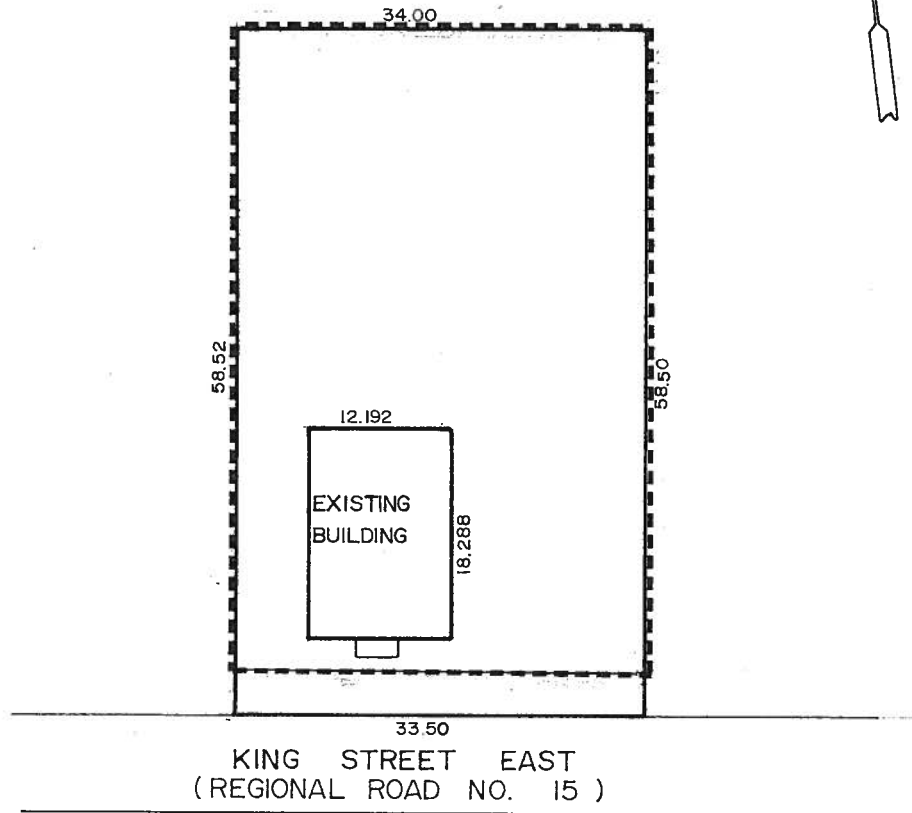


THIS IS SCHEDULE 'A' OF BYLAW \_\_\_\_\_  
PASSED THIS \_\_\_\_ DAY OF \_\_\_\_\_ 19 \_\_\_\_ . MAYOR

\_\_\_\_\_  
CLERK

TOWNSHIP OF WOOLWICH  
GERMAN COMPANY TRACT  
PART LOT 14

16 KING STREET EAST  
HEIDELBERG ONTARIO



PROPERTY OUTLINED THUS - - - - -

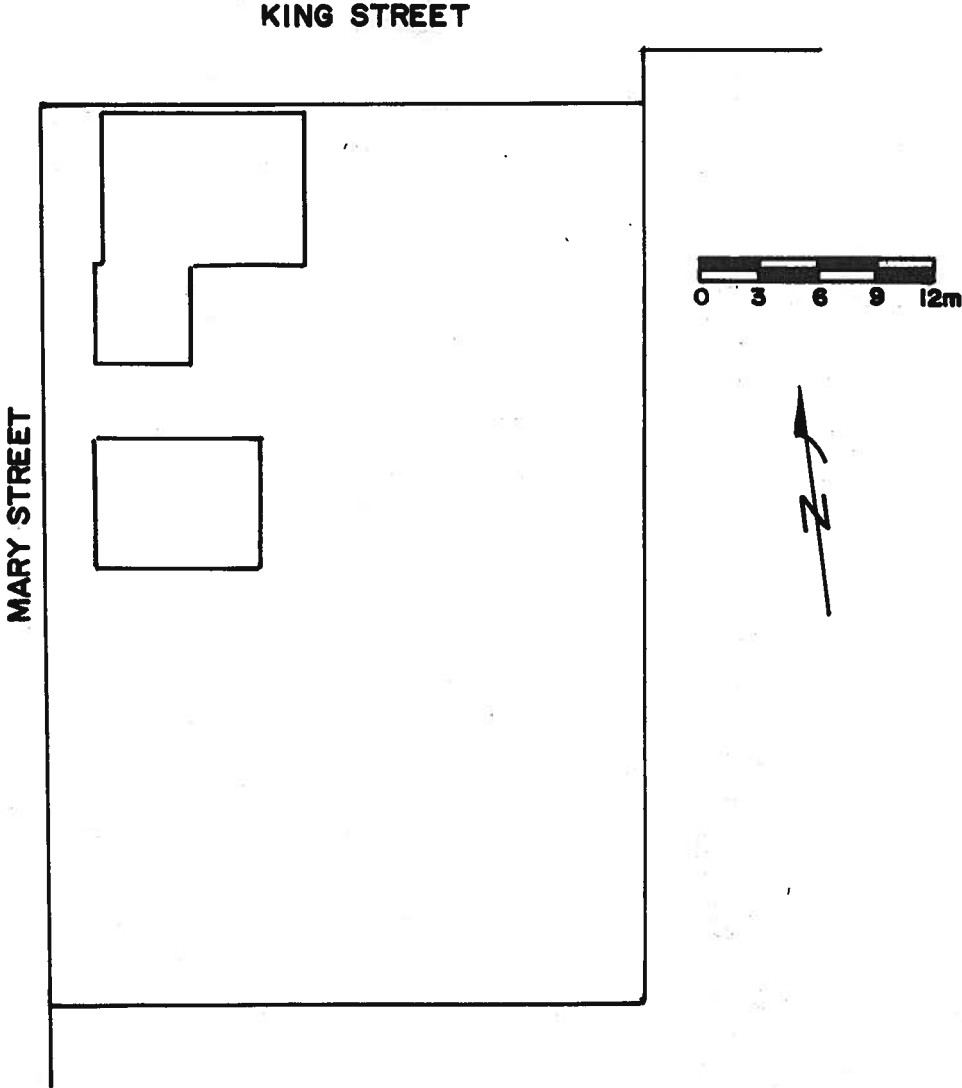
SCALE = 1:500

THIS IS SCHEDULE 'A' OF BYLAW \_\_\_\_\_  
PASSED THIS \_\_\_\_ DAY OF \_\_\_\_\_ 19 . MAYOR

\_\_\_\_\_  
CLERK



PART OF LOTS 9 & 10, PLAN 603  
TOWNSHIP OF WOOLWICH



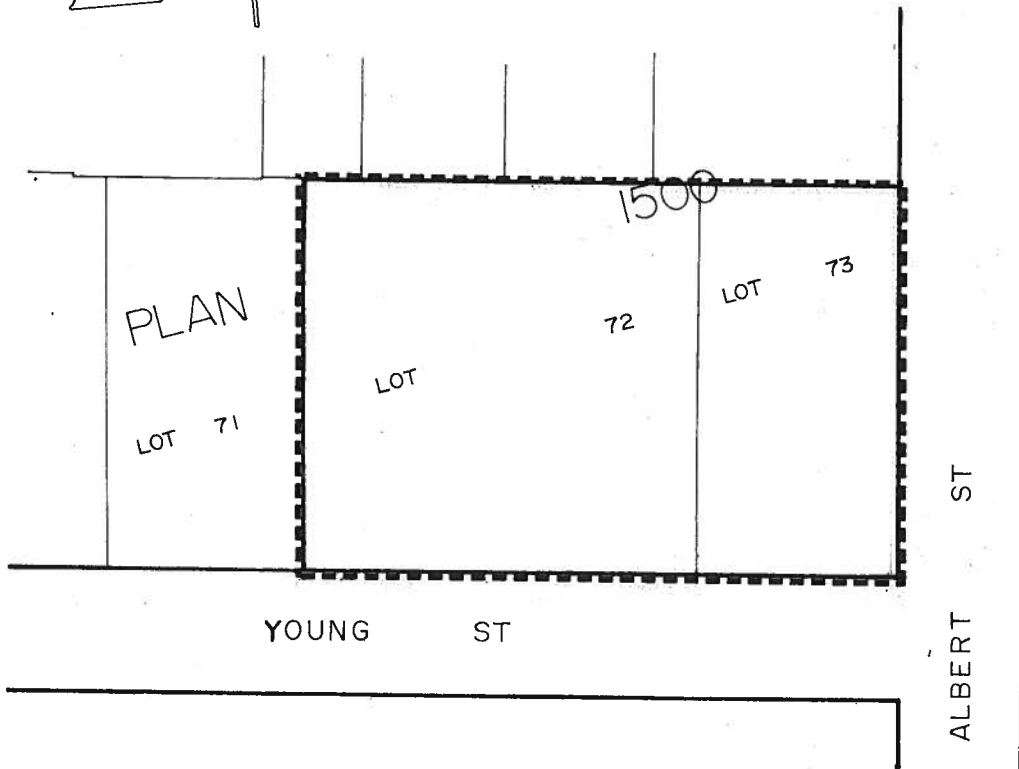
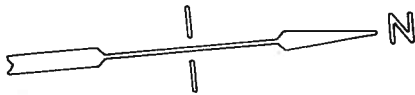
THIS IS SCHEDULE 'A' OF BYLAW \_\_\_\_\_  
PASSED THIS \_\_\_\_ DAY OF \_\_\_\_\_ 19 \_\_\_\_ . MAYOR \_\_\_\_\_  
CLERK \_\_\_\_\_

TOWNSHIP OF WOOLWICH

PLAN 1500 LOTS 72,73

SCALE 1=600

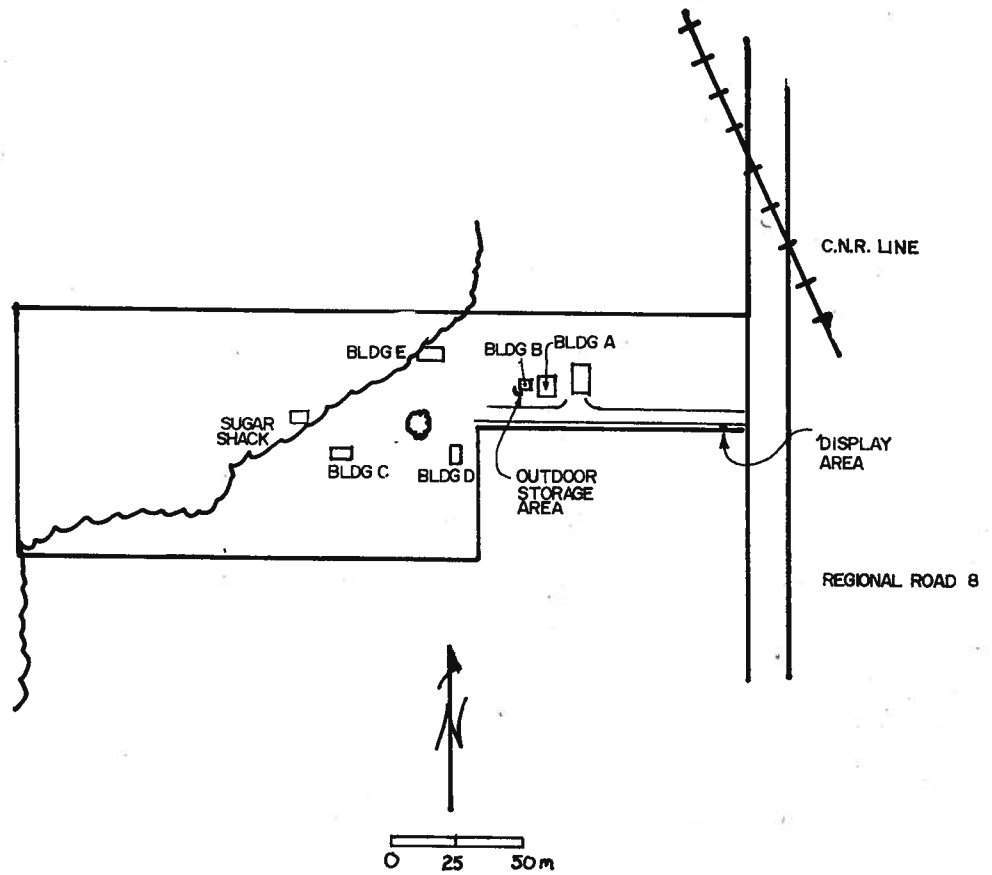
SUBJECT LANDS OUTLINED THUS - - - - -



THIS IS SCHEDULE 'A' OF BYLAW \_\_\_\_\_  
PASSED THIS \_\_\_\_ DAY OF \_\_\_\_\_ 19 . MAYOR

\_\_\_\_\_  
CLERK

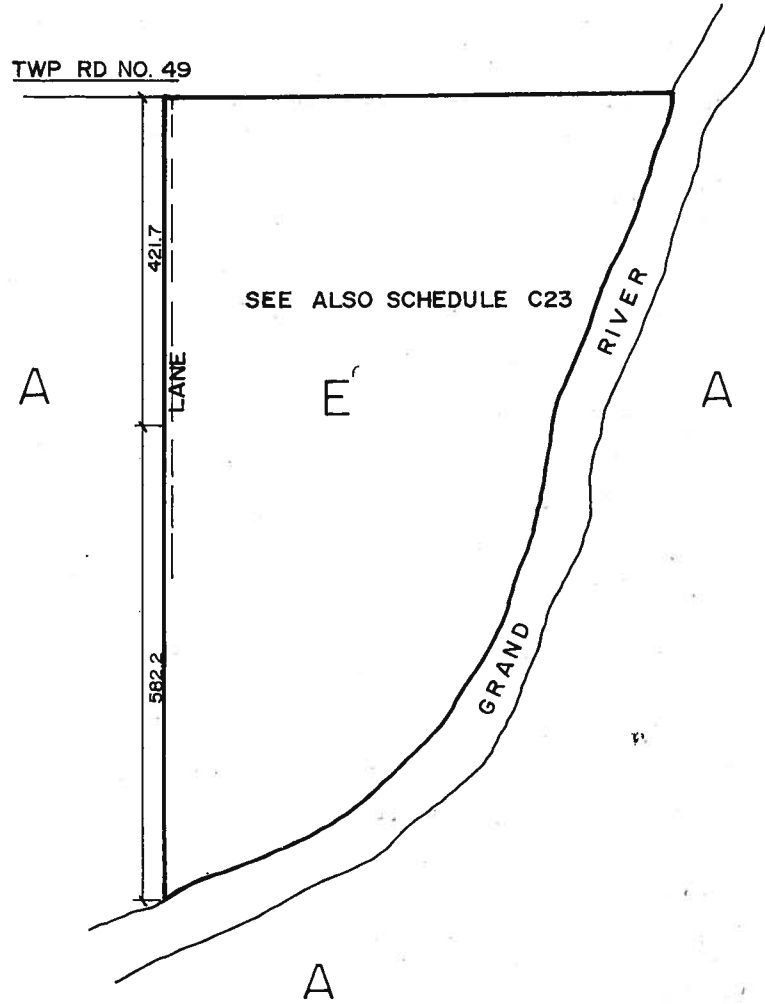
# PART LOT 8, G.C.T.



THIS IS SCHEDULE 'A' OF BYLAW \_\_\_\_\_  
PASSED THIS \_\_\_\_ DAY OF \_\_\_\_\_ 19 \_\_\_\_ . MAYOR

\_\_\_\_\_  
CLERK

PART OF LOT 1  
BROKEN FRONT CON. W.G. R.  
CROOKS TRACT  
TOWNSHIP OF WOOLWICH



SCALE : 1"=7500

SUBJECT LAND OUTLINED = 

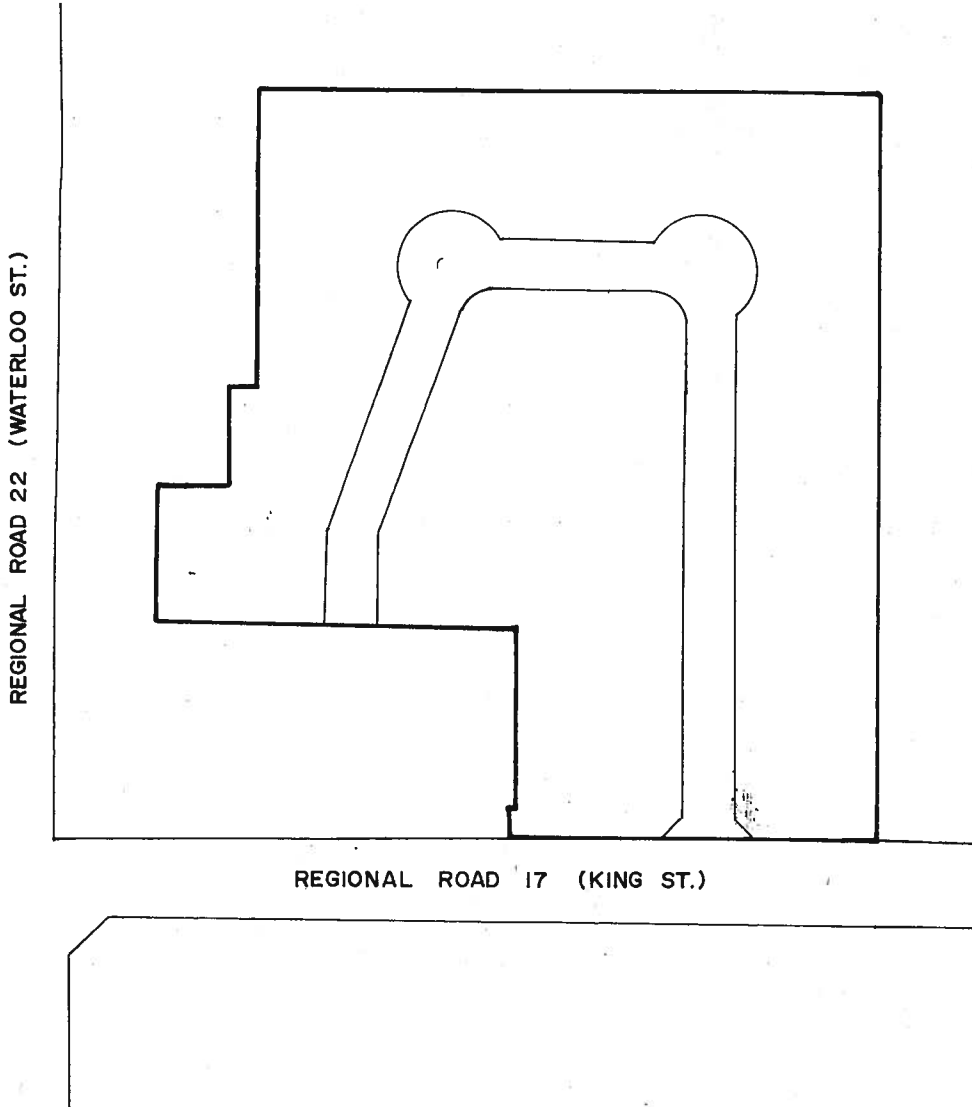
THIS IS SCHEDULE 'A' OF BYLAW \_\_\_\_\_  
PASSED THIS \_\_\_\_ DAY OF \_\_\_\_\_ 19 \_\_\_\_ . MAYOR

\_\_\_\_\_  
CLERK

PART LOT 31 G.C.T.  
TOWNSHIP OF WOOLWICH



SCALE 1" = 2500



THIS IS SCHEDULE 'A' OF BYLAW \_\_\_\_\_  
PASSED THIS \_\_\_\_ DAY OF \_\_\_\_\_ 19 \_\_\_\_ . MAYOR

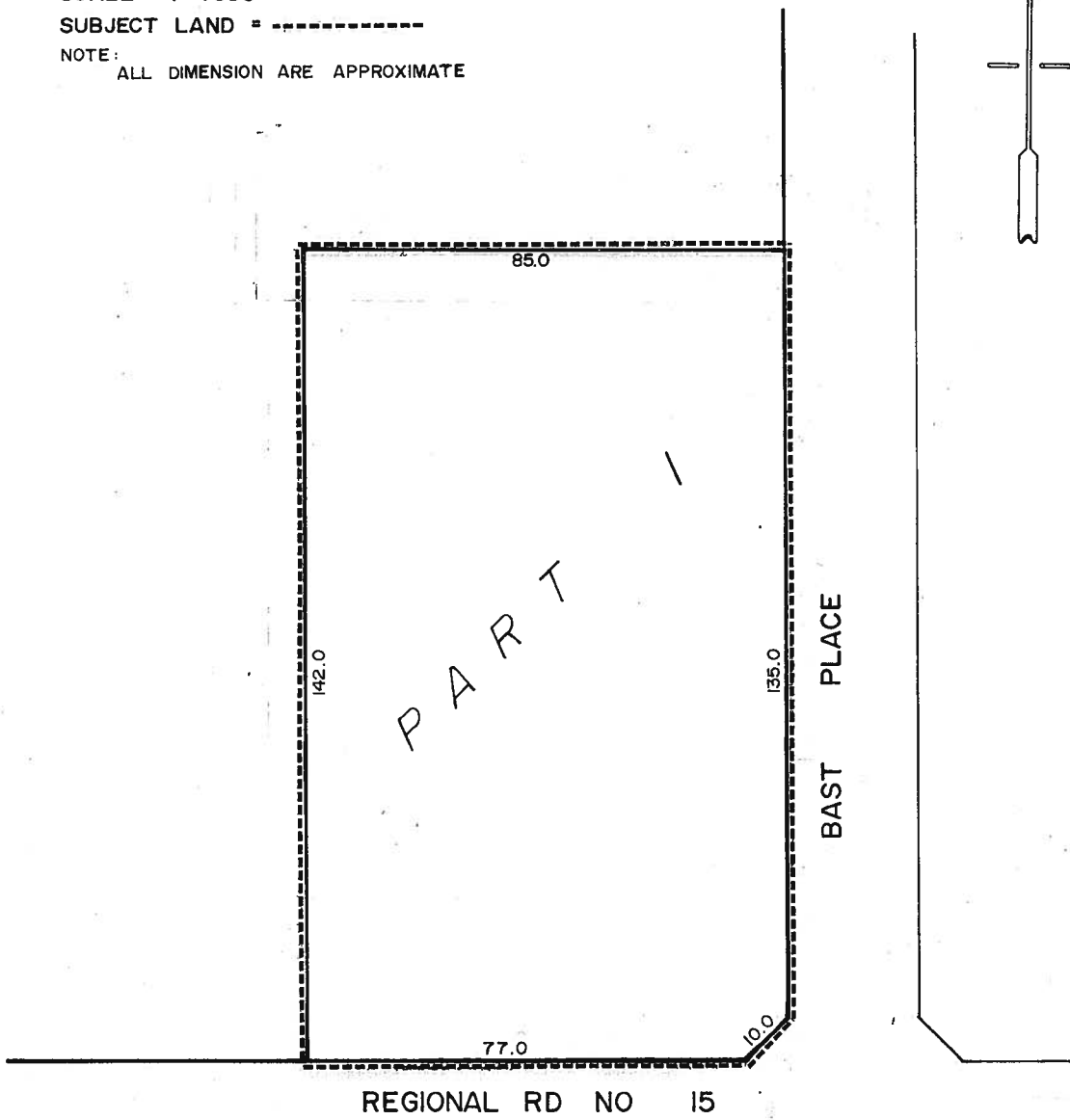
\_\_\_\_\_  
CLERK

TOWNSHIP OF WOOLWICH  
PART LOT 10, G.C.T.

SCALE : 1 = 1000

SUBJECT LAND = -----

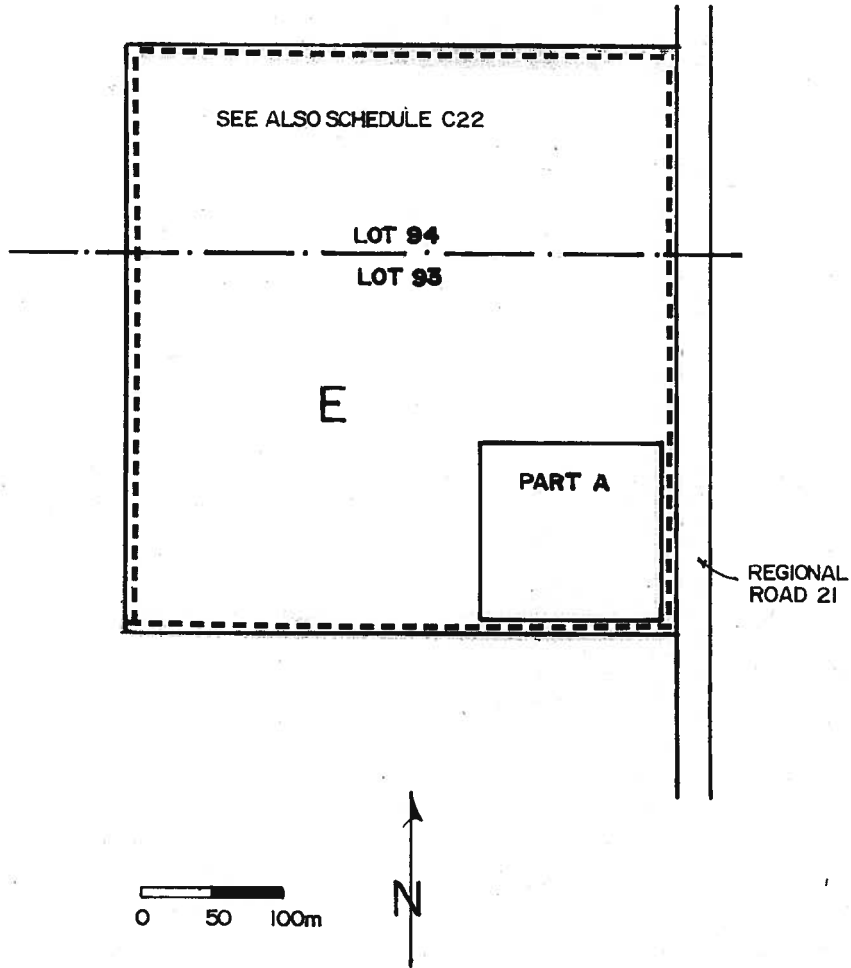
NOTE: ALL DIMENSION ARE APPROXIMATE



THIS IS SCHEDULE 'A' OF BYLAW \_\_\_\_\_  
PASSED THIS \_\_\_\_ DAY OF \_\_\_\_\_ 19 \_\_\_\_ . MAYOR

\_\_\_\_\_  
CLERK

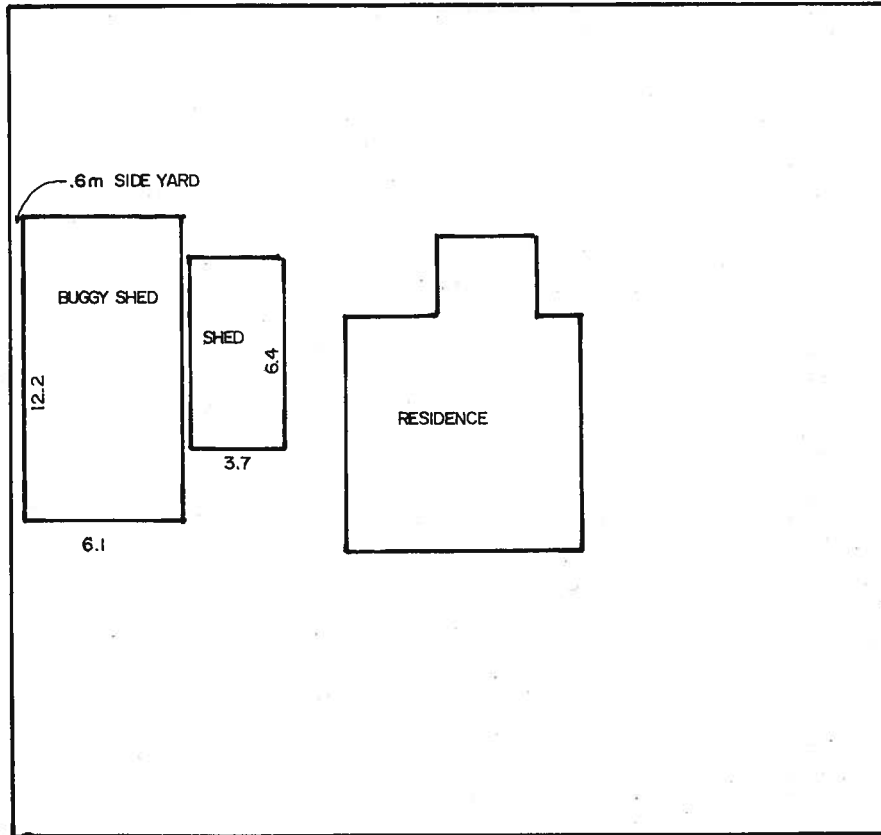
# PART LOTS 93 & 94, G.C.T.



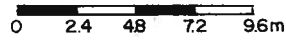
THIS IS SCHEDULE 'A' OF BYLAW \_\_\_\_\_  
PASSED THIS \_\_\_\_ DAY OF \_\_\_\_\_ 19 \_\_\_\_ . MAYOR

\_\_\_\_\_  
CLERK

PART LOT 78, G.C.T.



TOWNSHIP ROAD 13



THIS IS SCHEDULE 'A' OF BYLAW \_\_\_\_\_  
PASSED THIS \_\_\_\_ DAY OF \_\_\_\_\_ 19 \_\_\_\_ . MAYOR

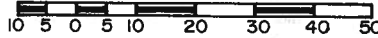
\_\_\_\_\_  
CLERK

SECTION 26.1.174

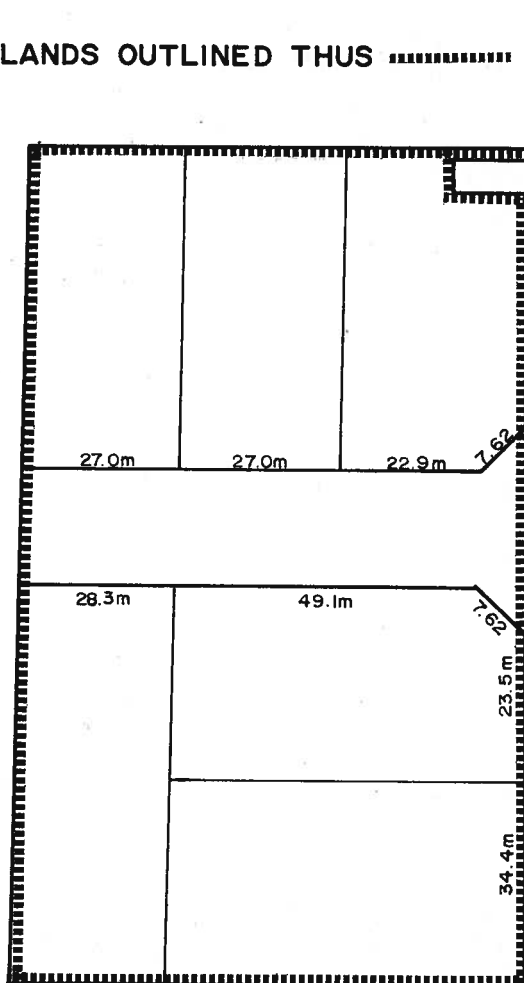


PART LOT 31  
GERMAN COMPANY TRACT  
TOWNSHIP OF WOOLWICH

SCALE: 1:1000



SUBJECT LANDS OUTLINED THUS .....

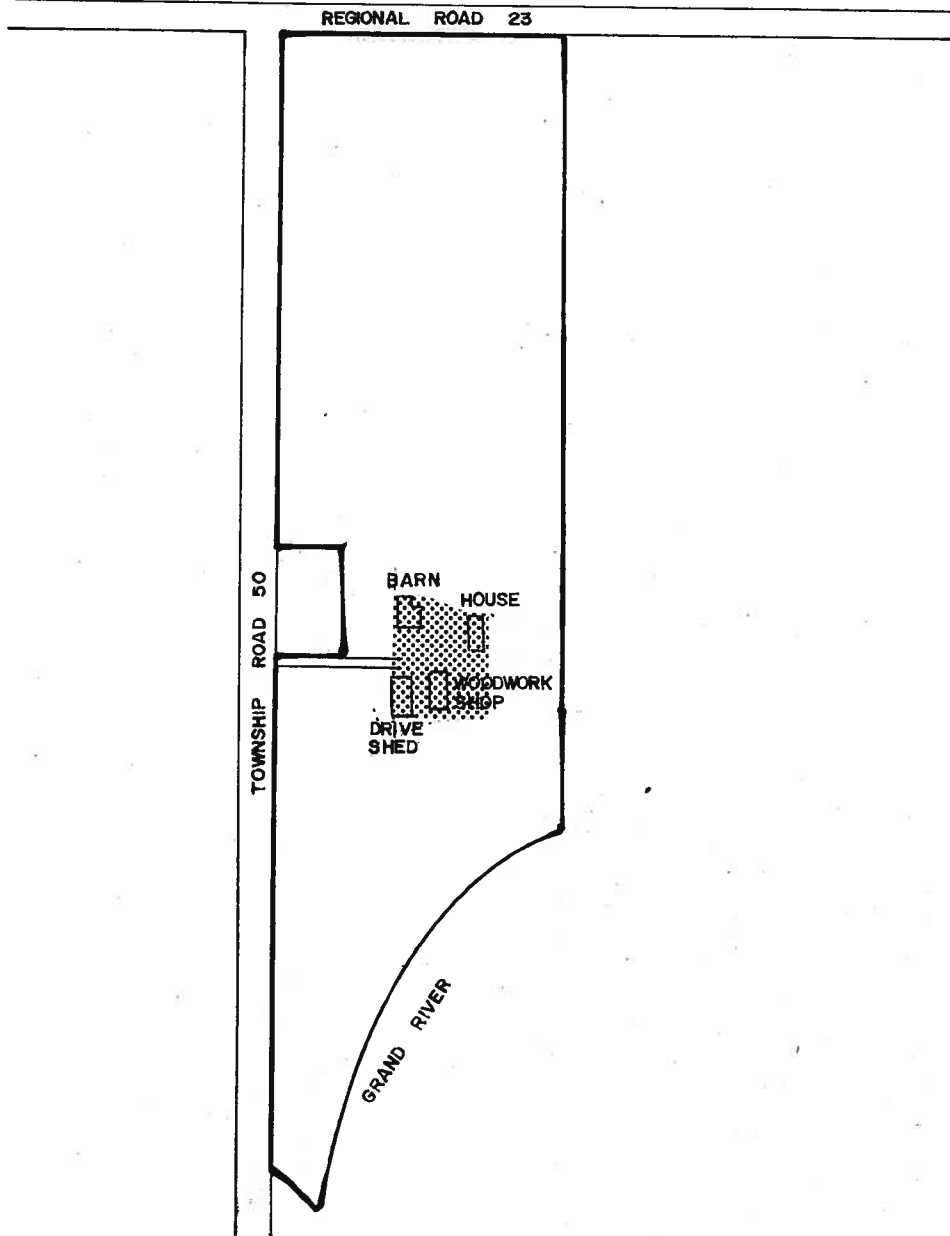


THIS IS SCHEDULE 'A' TO BY-LAW \_\_\_\_\_  
PASSED THIS \_\_\_\_\_ DAY OF \_\_\_\_\_, 1991

\_\_\_\_\_  
MAYOR

\_\_\_\_\_  
CLERK

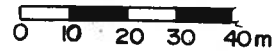
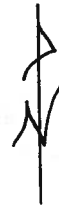
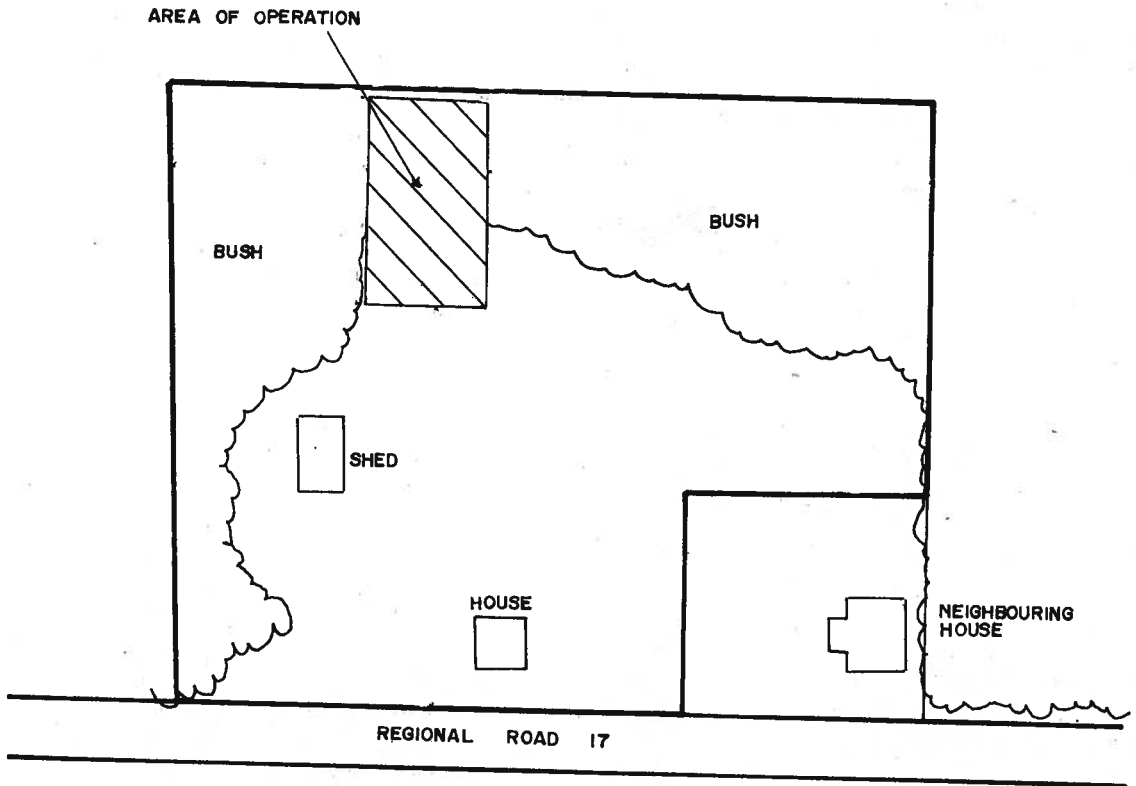
LOT 2 BROKEN FRONT  
TOWNSHIP OF WOOLWICH



THIS IS SCHEDULE 'A' OF BYLAW \_\_\_\_\_  
PASSED THIS \_\_\_\_ DAY OF \_\_\_\_\_ 19 \_\_\_\_ . MAYOR

\_\_\_\_\_  
CLERK

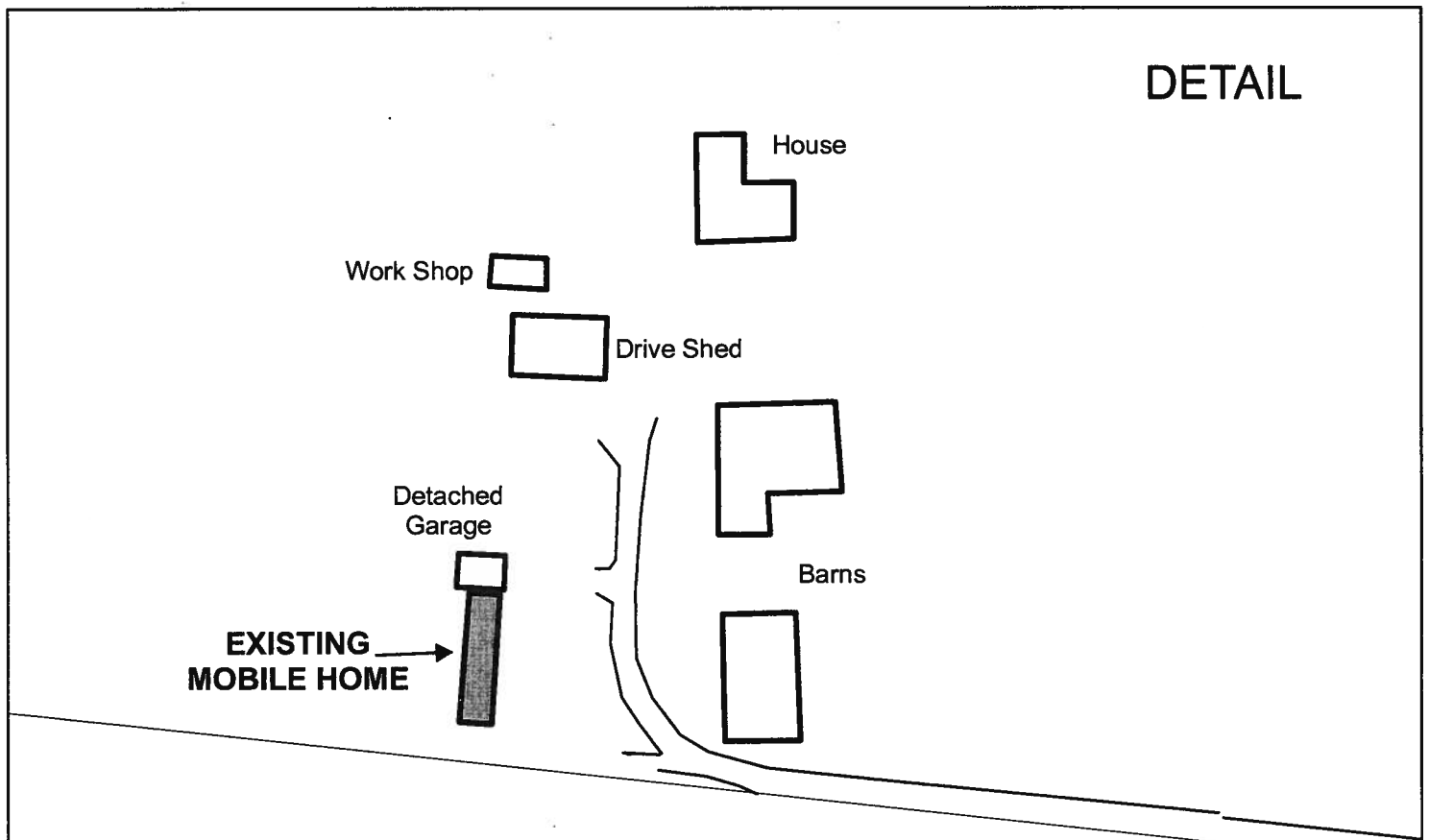
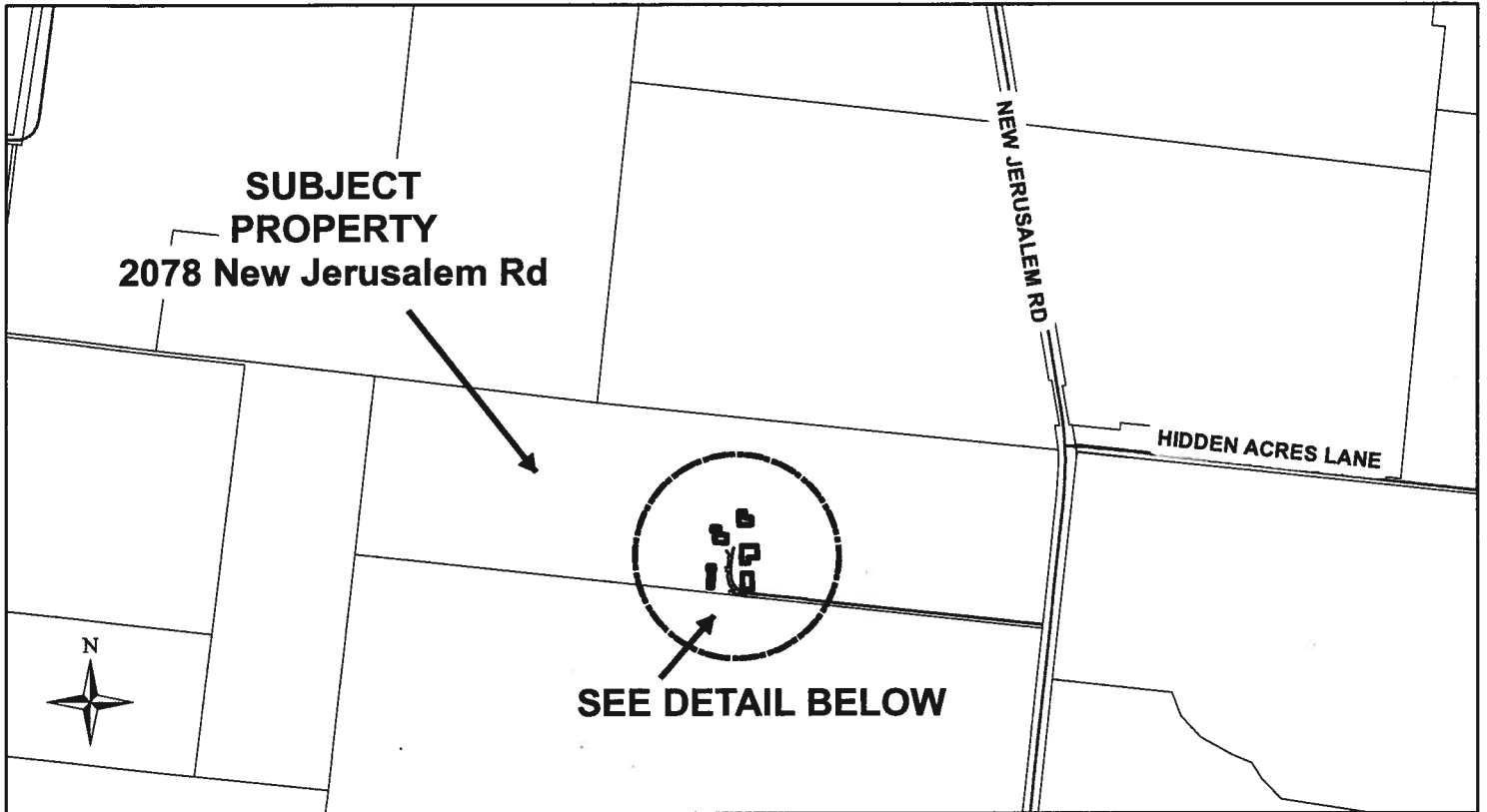
PART LOT 17 G.C.T.  
TOWNSHIP OF WOOLWICH



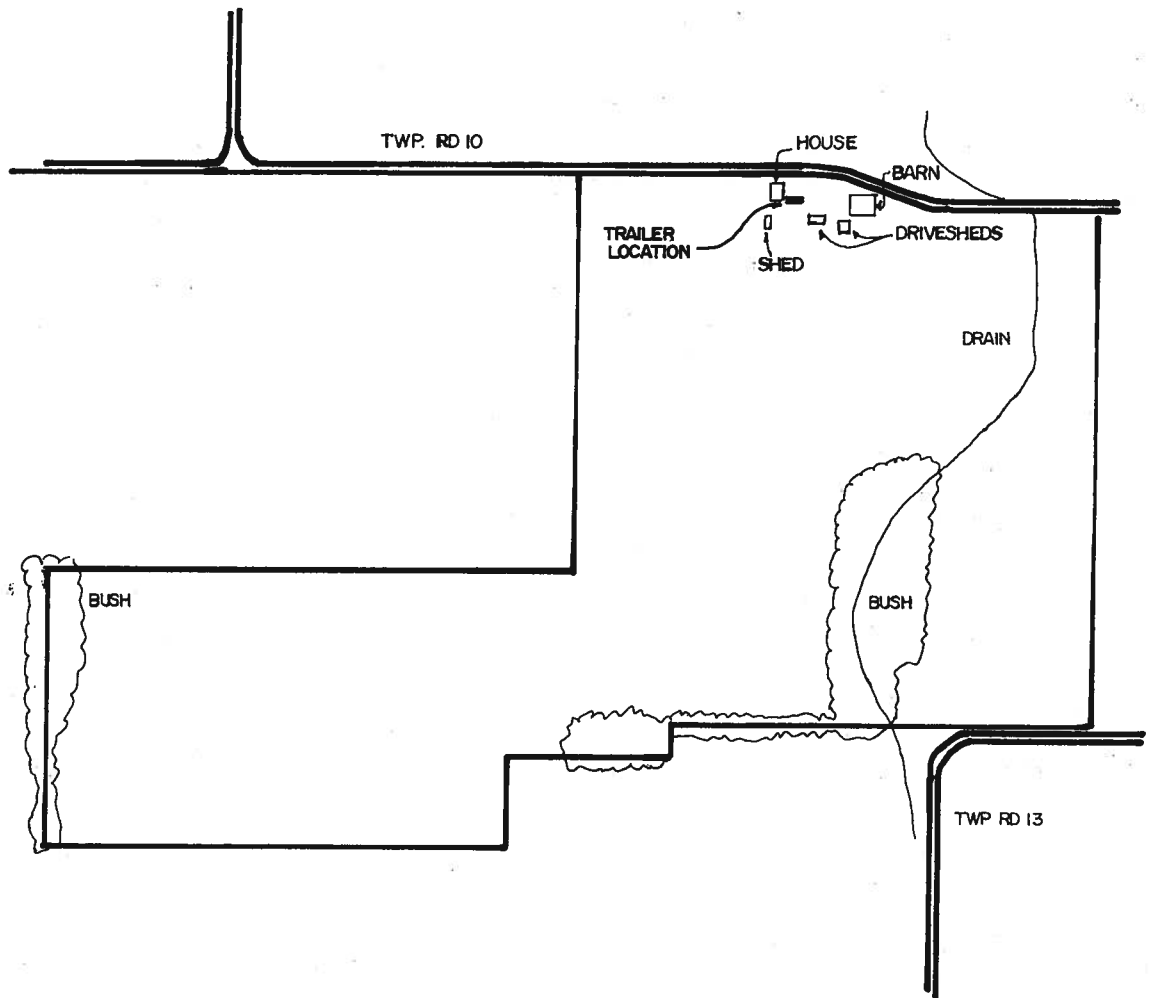
THIS IS SCHEDULE 'A' OF BYLAW \_\_\_\_\_  
PASSED THIS \_\_\_\_ DAY OF \_\_\_\_\_ 19 \_\_\_\_ . MAYOR

\_\_\_\_\_  
CLERK

Marlin and Virginia Bauman  
2078 New Jerusalem Road  
GCT Part Lot 44



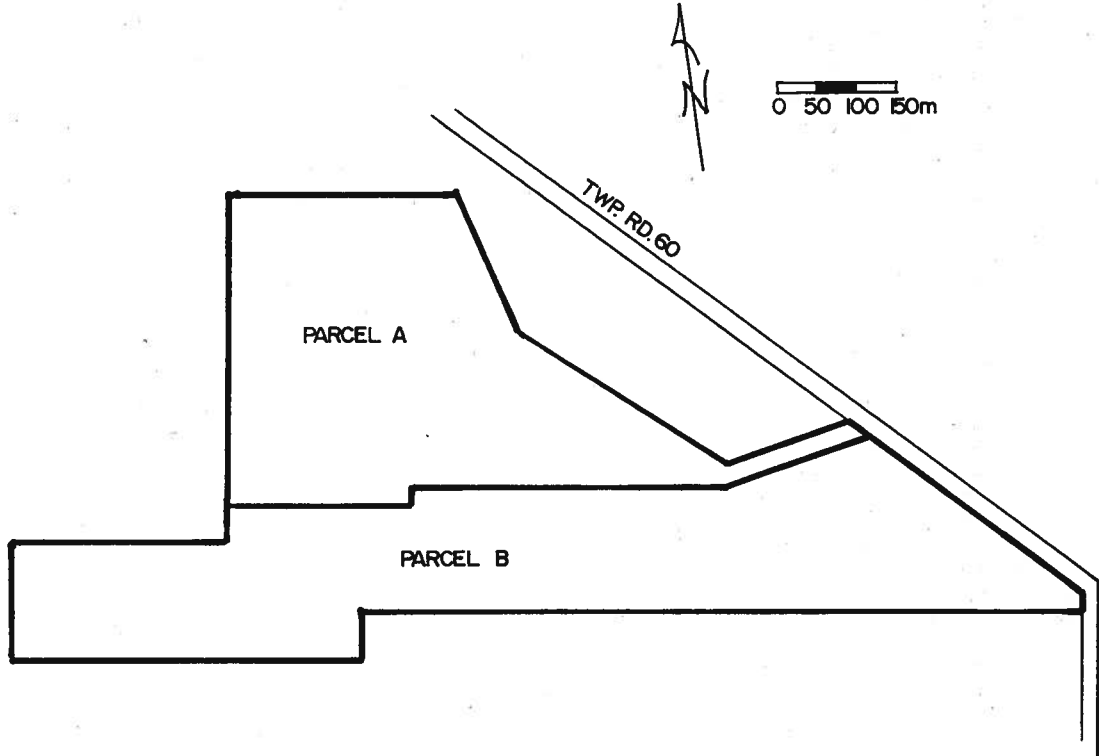
# PART LOTS 78&55,G.C.T.



THIS IS SCHEDULE 'A' OF BYLAW \_\_\_\_\_  
PASSED THIS \_\_\_\_ DAY OF \_\_\_\_\_ 19 \_\_\_\_ . MAYOR

\_\_\_\_\_  
CLERK

PART LOTS 2 & 3, CONC. 2, BLOCK 3, HITCHING'S TRACT

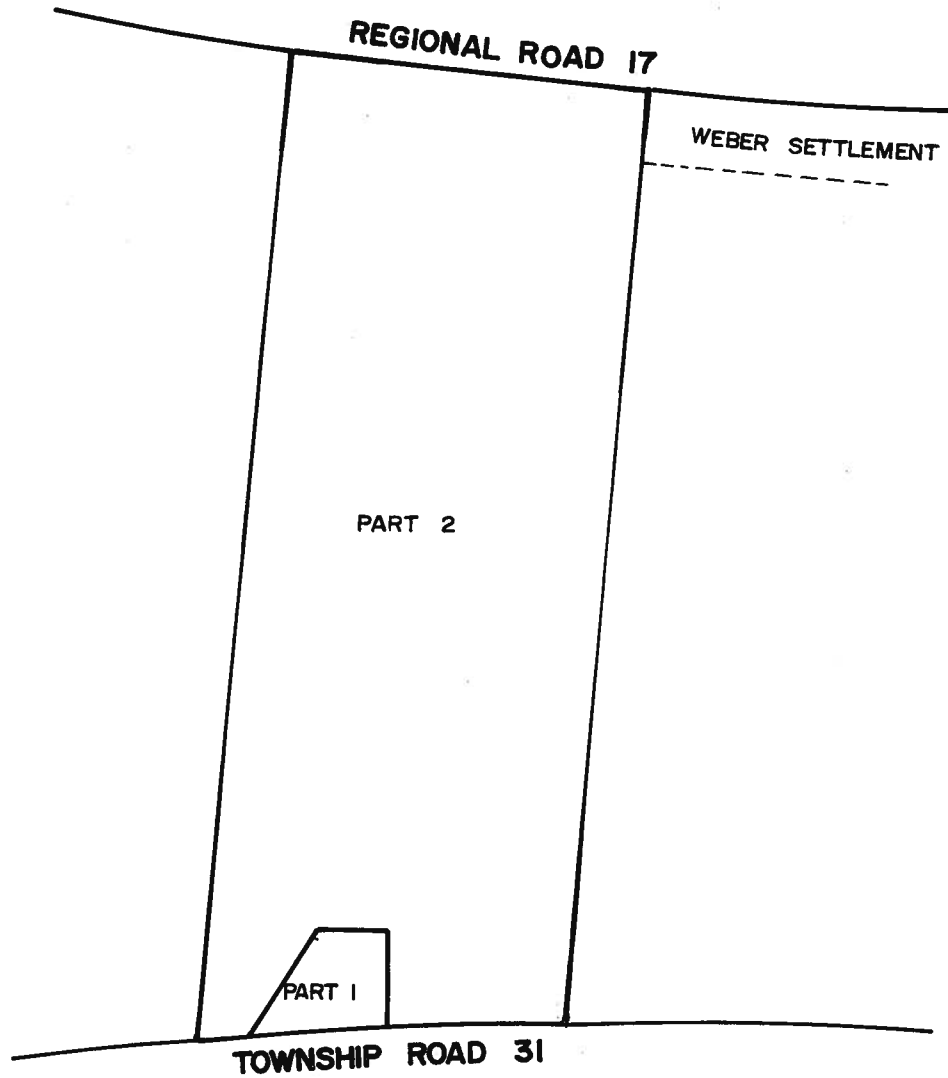


THIS IS SCHEDULE 'A' OF BYLAW \_\_\_\_\_  
PASSED THIS \_\_\_\_ DAY OF \_\_\_\_\_ 19 \_\_\_\_ . MAYOR

\_\_\_\_\_  
CLERK

PART LOT 33 G.C.T  
TOWNSHIP OF WOOLWICH

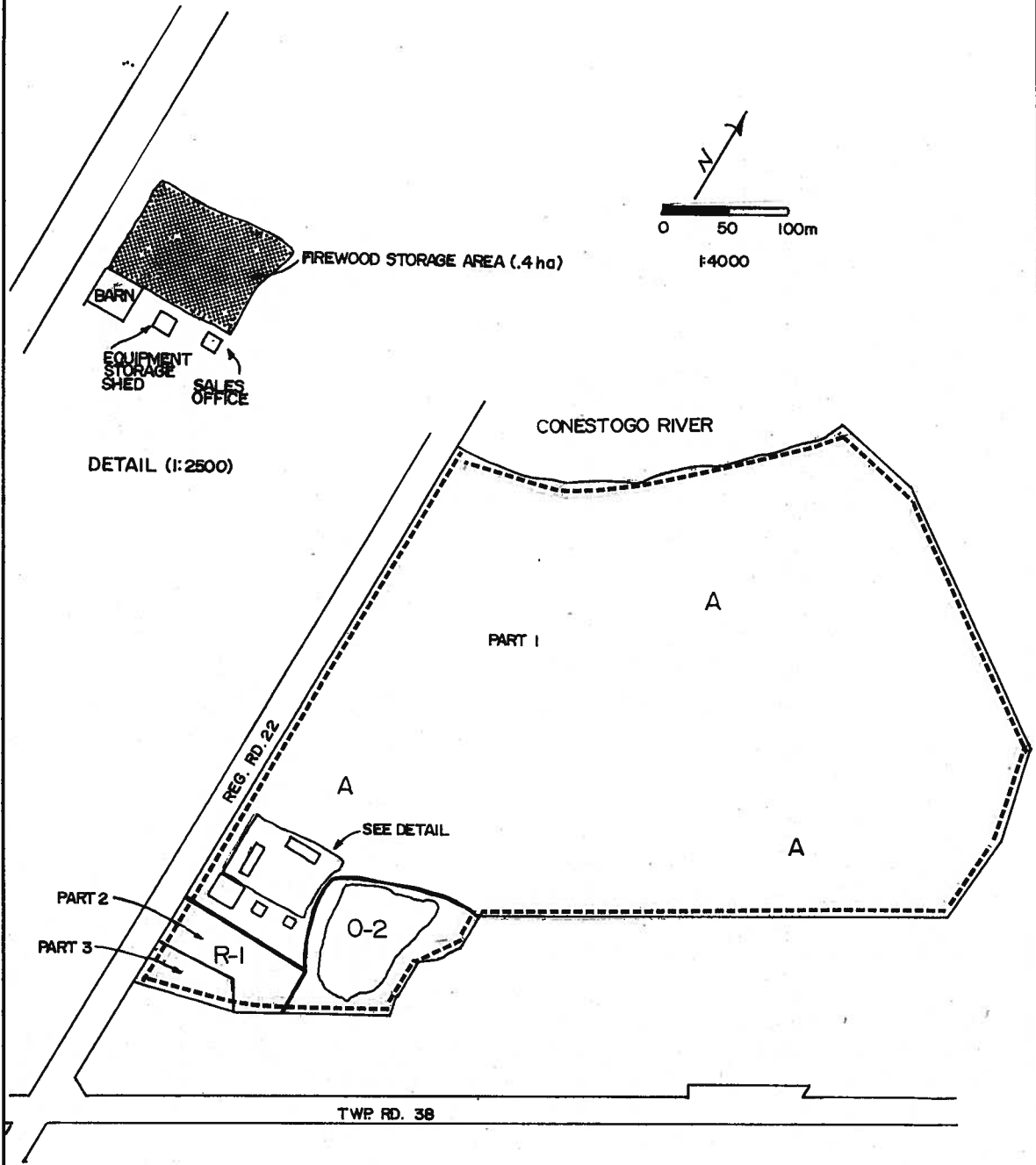
1:5000



THIS IS SCHEDULE 'A' OF BYLAW \_\_\_\_\_  
PASSED THIS \_\_\_\_ DAY OF \_\_\_\_\_ 19 \_\_\_\_ . MAYOR

\_\_\_\_\_  
CLERK

# PART LOT 3, G.C.T.

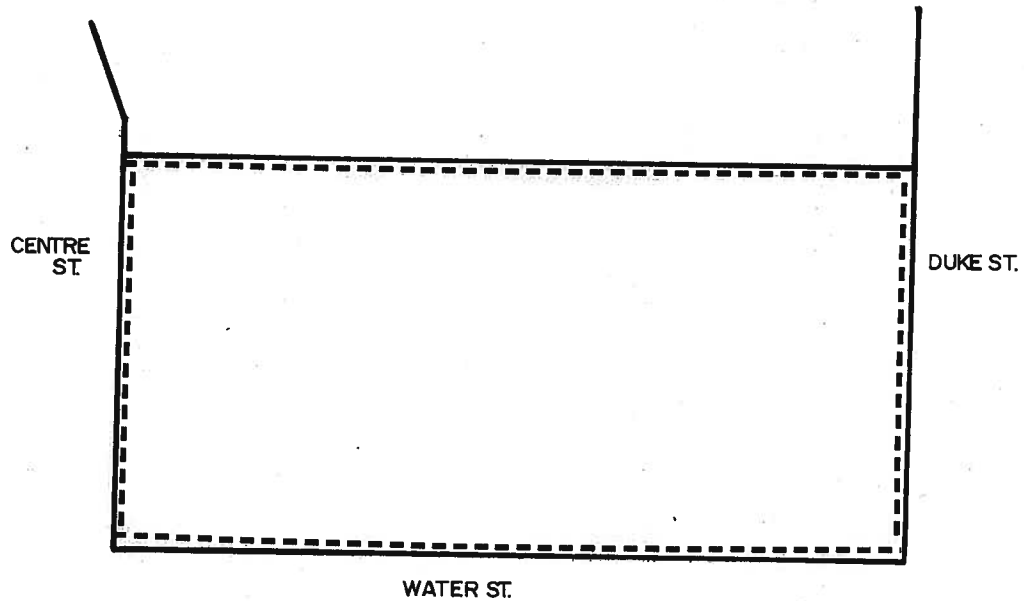


THIS IS SCHEDULE 'A' OF BYLAW \_\_\_\_\_  
PASSED THIS \_\_\_\_ DAY OF \_\_\_\_\_ 19 \_\_\_\_ . MAYOR

\_\_\_\_\_  
CLERK



# LOTS 114, 115, 116 & 117, PLAN 567



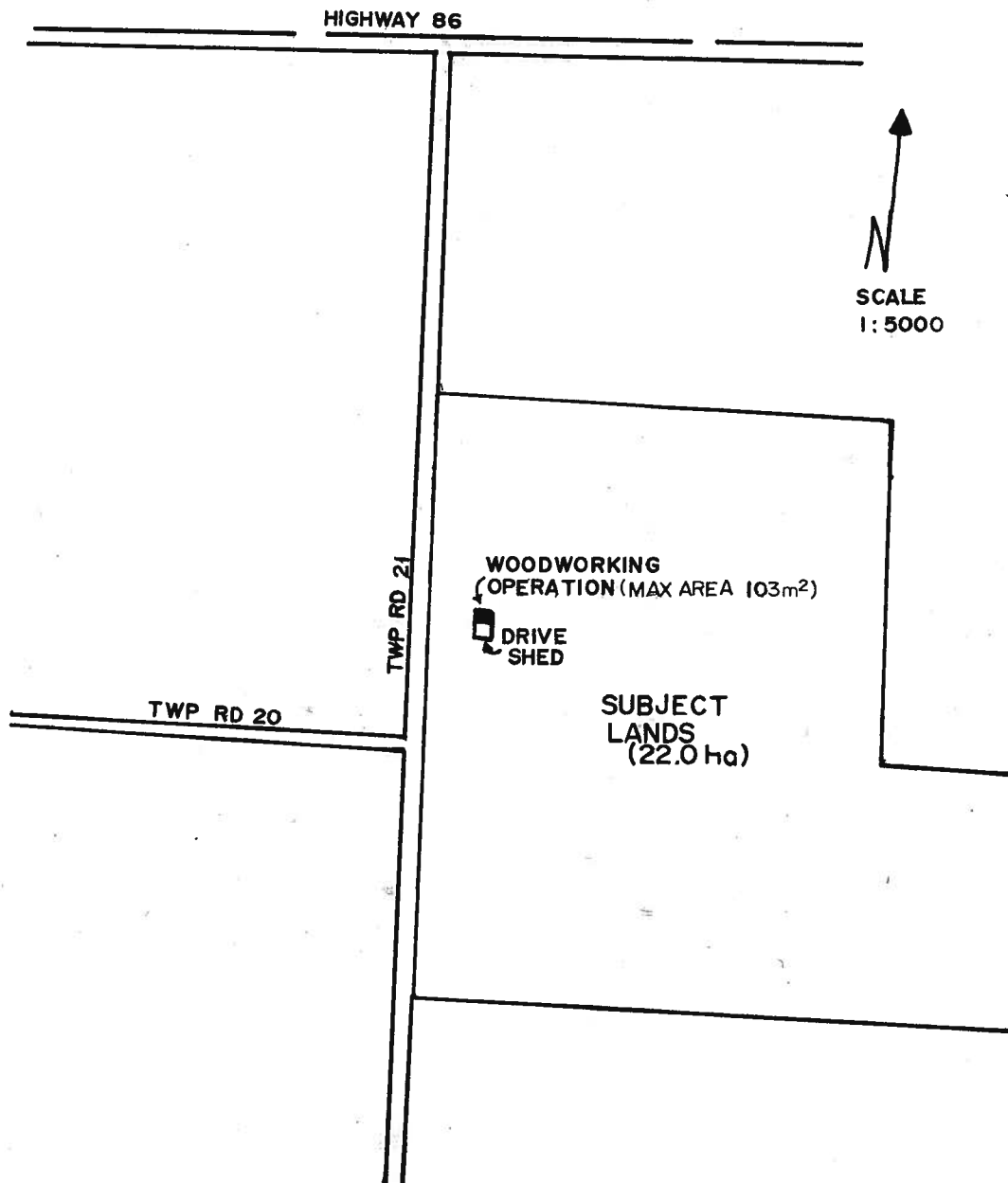
0 5 10m.

SUBJECT LANDS - - - -

THIS IS SCHEDULE 'A' OF BYLAW \_\_\_\_\_  
PASSED THIS \_\_\_\_ DAY OF \_\_\_\_\_ 19 \_\_\_\_ . MAYOR

\_\_\_\_\_  
CLERK

PART LOTS 108 & 48 G.C.T.  
TOWNSHIP OF WOOLWICH



THIS IS SCHEDULE 'A' OF BYLAW \_\_\_\_\_  
PASSED THIS \_\_\_\_ DAY OF \_\_\_\_\_ 19 \_\_\_\_ . MAYOR

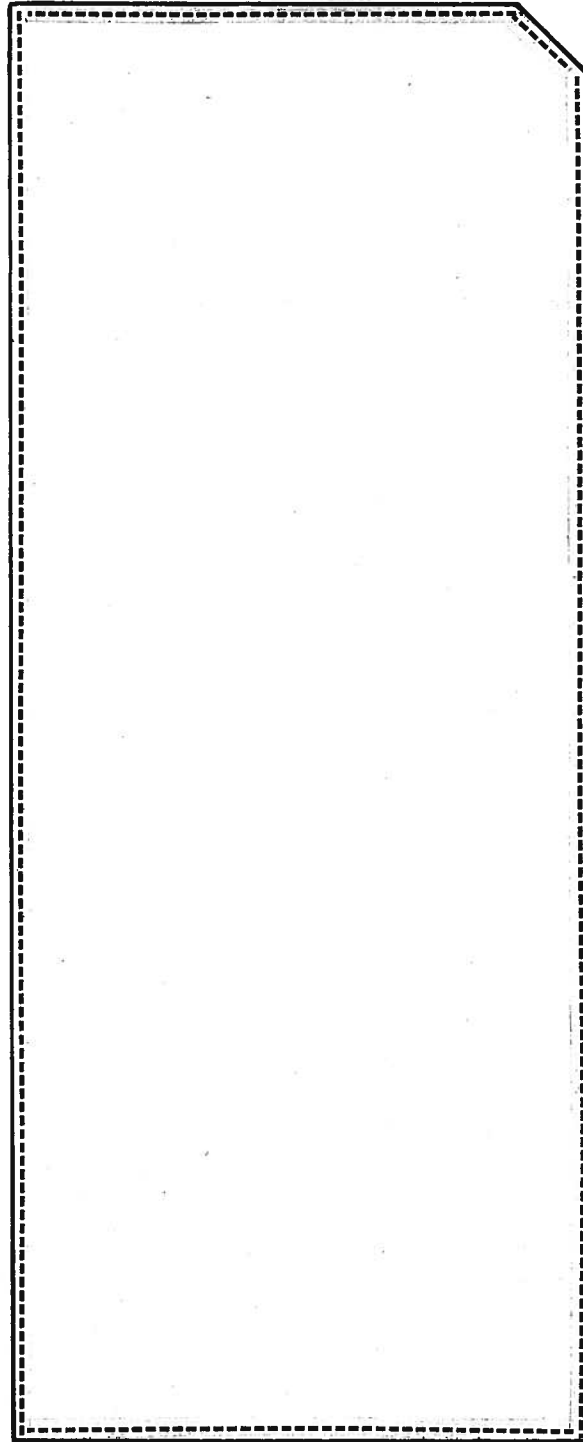
\_\_\_\_\_  
CLERK

**SCHEDULE A**  
**Part Lot 107, GCT**

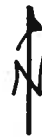
**DELETED BY**  
**BY-LAW 5-2015**  
**Southwood 3 - Birdland Developments Limited**

PART 1 & PART OF PART 2, 58R4354

ALBERT ST.



WATER ST.



0 7.5m

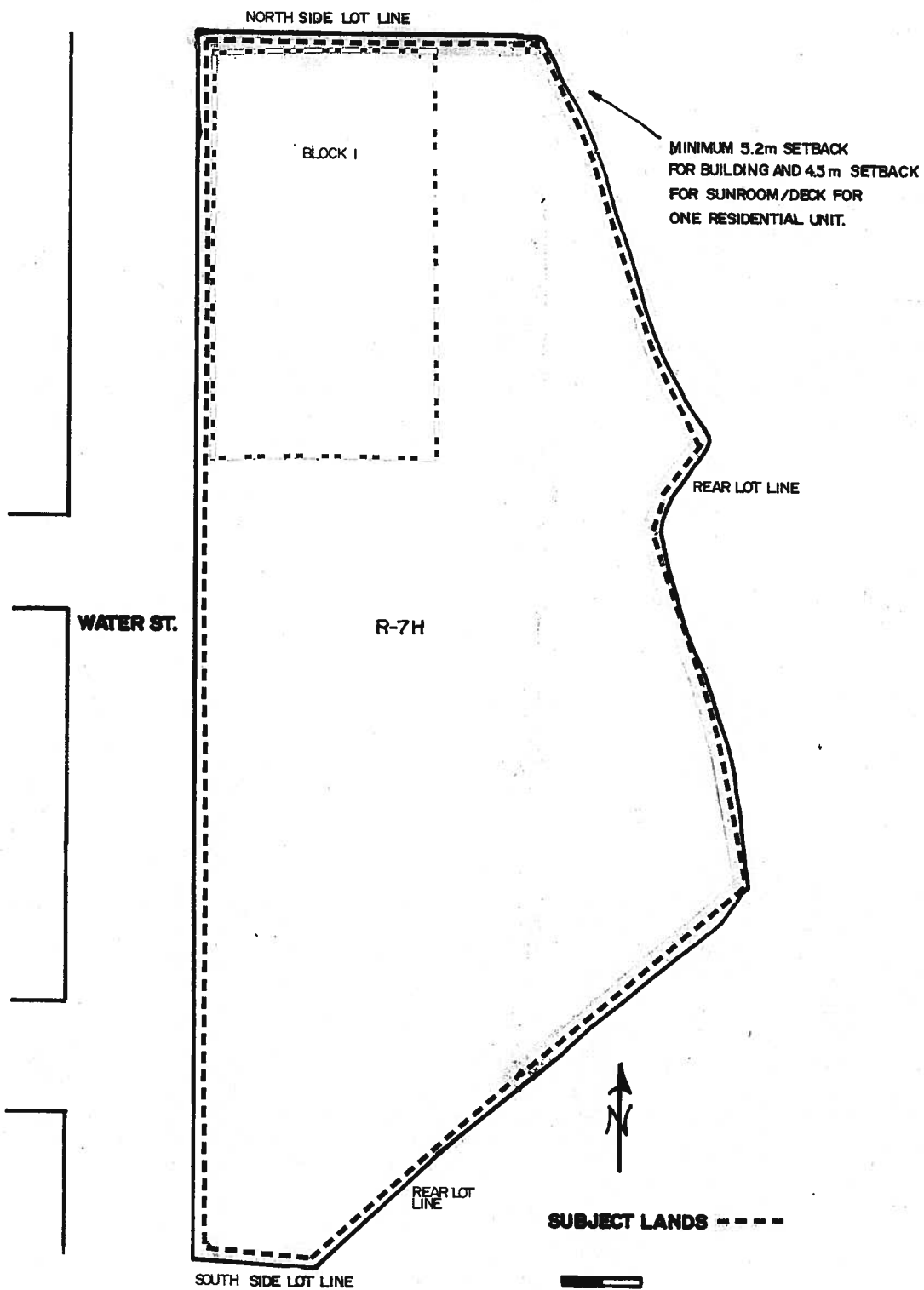
SUBJECT LANDS

THIS IS SCHEDULE 'A' OF BYLAW \_\_\_\_\_

PASSED THIS \_\_\_\_ DAY OF \_\_\_\_\_ 19 \_\_\_\_ . MAYOR

\_\_\_\_\_  
CLERK

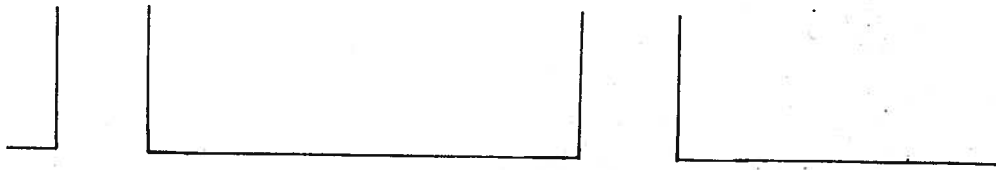
# PART LOT 19, PLAN 1501



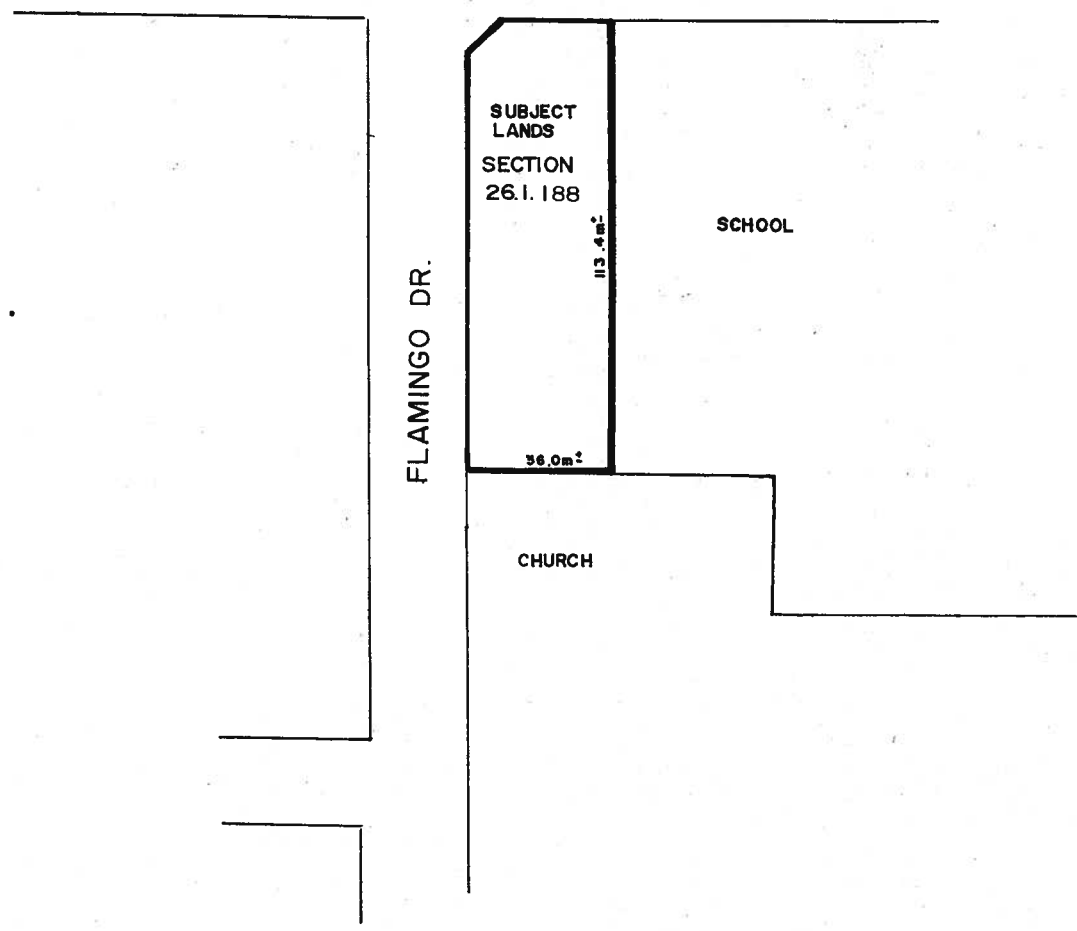
THIS IS SCHEDULE 'A' OF BYLAW \_\_\_\_\_  
PASSED THIS \_\_\_\_ DAY OF \_\_\_\_\_ 19 \_\_\_\_ . MAYOR

\_\_\_\_\_  
CLERK

PART LOT 121 PLAN 1364  
TOWNSHIP OF WOOLWICH



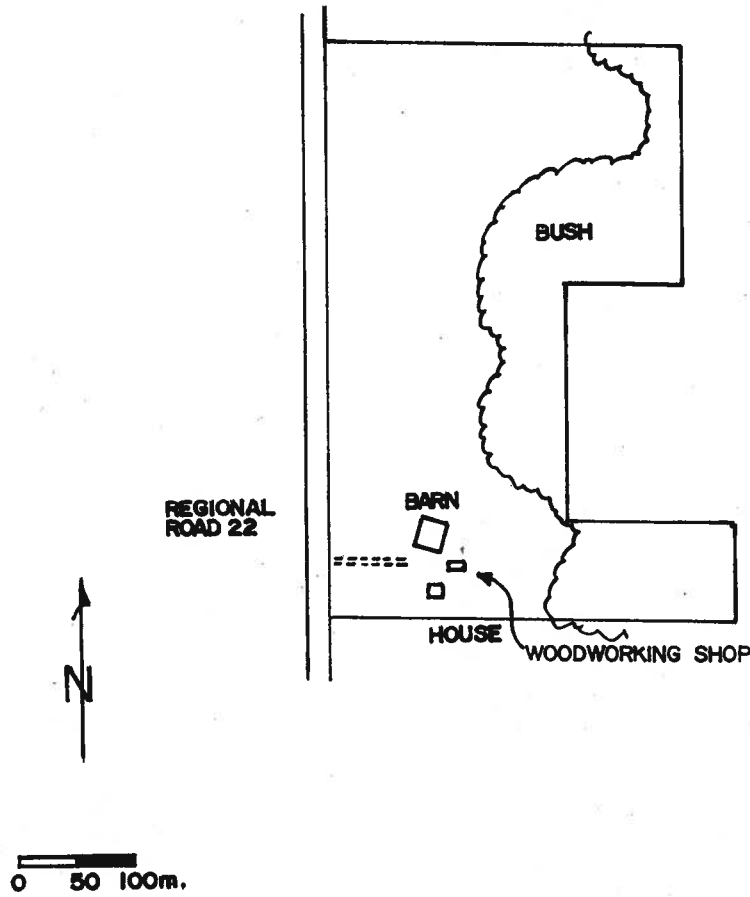
FIRST ST.



THIS IS SCHEDULE 'A' OF BYLAW \_\_\_\_\_  
PASSED THIS \_\_\_\_ DAY OF \_\_\_\_\_ 19 \_\_\_\_ . MAYOR

\_\_\_\_\_  
CLERK

PART LOT 57, G.C.T.



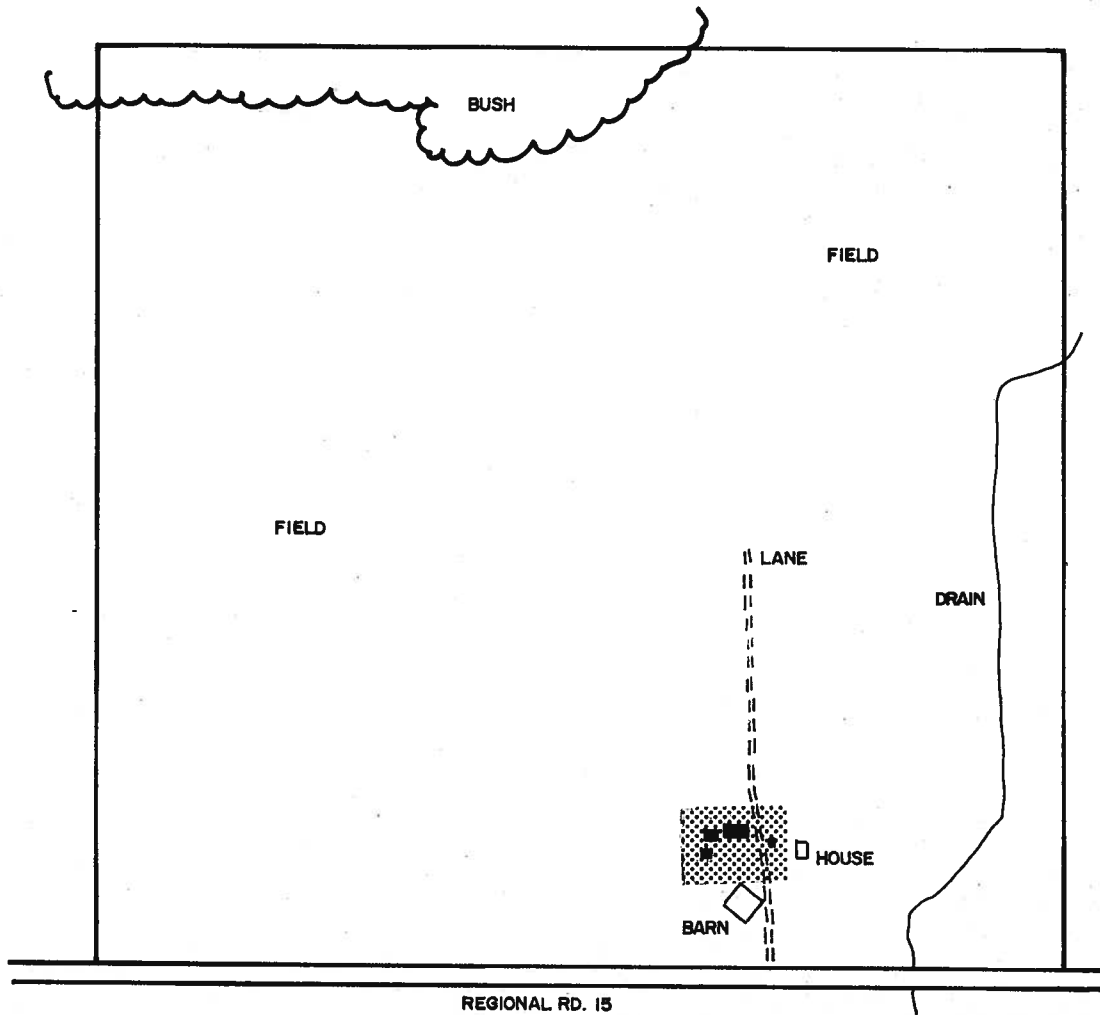
THIS IS SCHEDULE 'A' OF BYLAW \_\_\_\_\_  
PASSED THIS \_\_\_\_ DAY OF \_\_\_\_\_ 19\_\_ . MAYOR

\_\_\_\_\_  
CLERK

Map 26.1.190 Deleted



PART LOT 13, G.C.T.



REGIONAL RD. 15



0 50 100 150m

EXISTING SHEDS

AREA WITHIN WHICH  
WOODWORKING SHOP  
MAY BE LOCATED

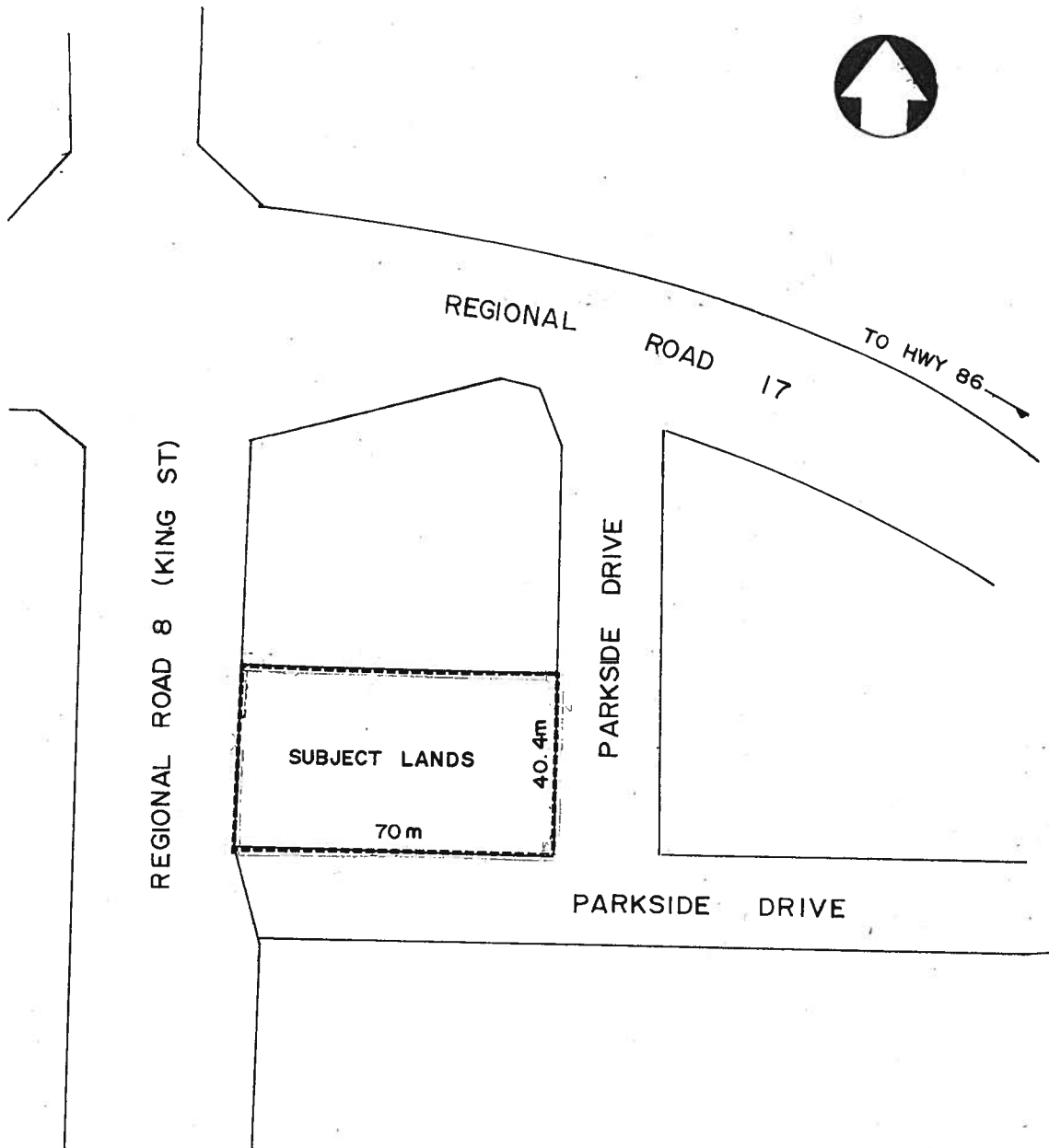


THIS IS SCHEDULE 'A' OF BYLAW \_\_\_\_\_  
PASSED THIS \_\_\_\_ DAY OF \_\_\_\_\_ 19 \_\_\_\_ . MAYOR

\_\_\_\_\_  
CLERK

SECTION 26.1.191

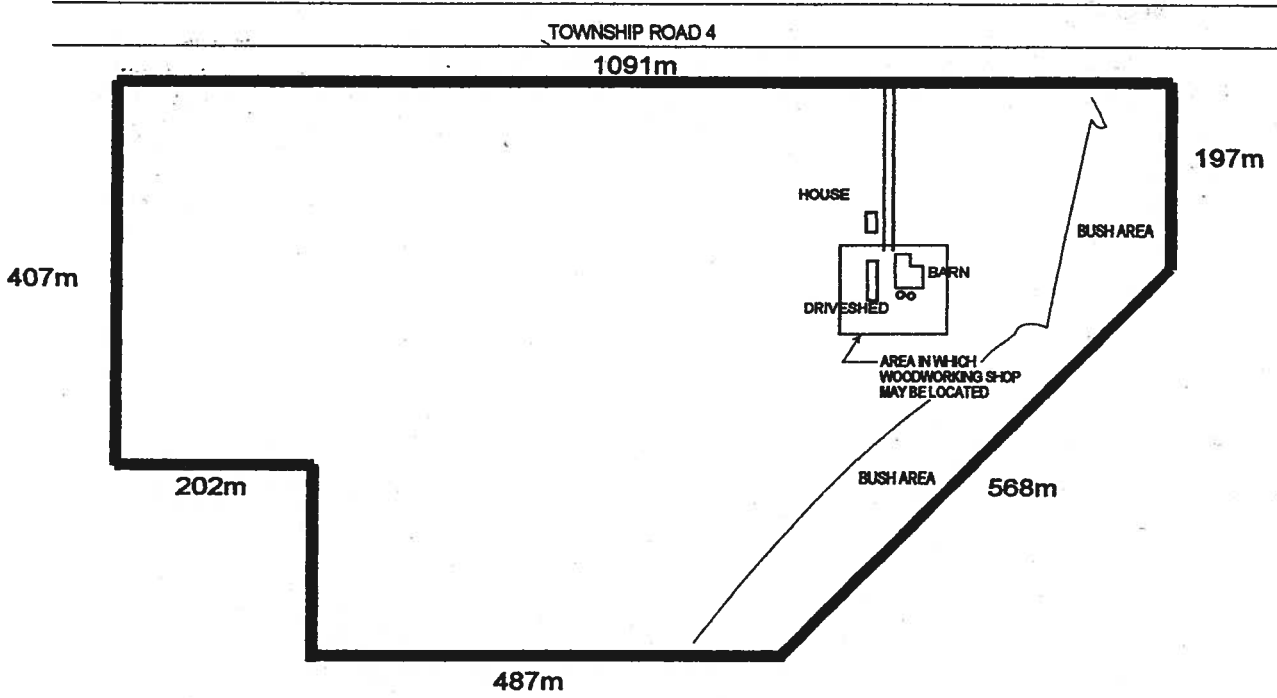
PART LOT 26 PLAN 1548  
TOWNSHIP OF WOOLWICH



THIS IS SCHEDULE 'A' OF BYLAW \_\_\_\_\_  
PASSED THIS \_\_\_\_ DAY OF \_\_\_\_\_ 19 \_\_\_\_ . MAYOR

\_\_\_\_\_  
CLERK

PART LOT 97, G.C.T.  
(FORMER TOWNSHIP OF  
WATERLOO, COUNTY OF WATERLOO)



↑  
NORTH  
APPROXIMATE SCALE 1:8000

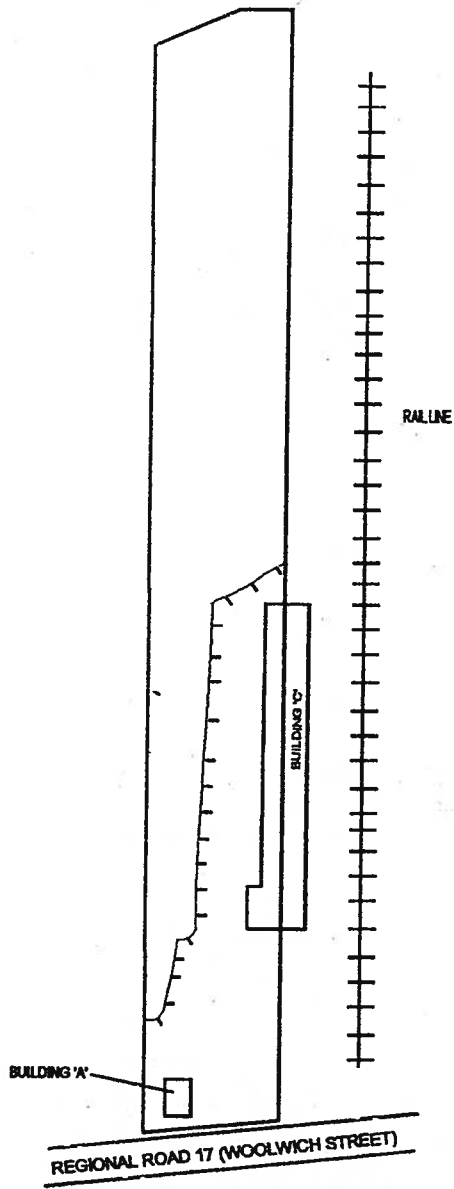
THIS IS SCHEDULE "A" TO BY-LAW 46-95,  
PASSED THIS 27th DAY OF June, 1995.

*R. P. L.*  
MAYOR

*[Signature]*  
CLERK

PART LOT 114, G.C.T.  
FORMER TOWNSHIP OF WATERLOO,  
COUNTY OF WATERLOO

NORTH →  
APPROXIMATE SCALE 1:1800

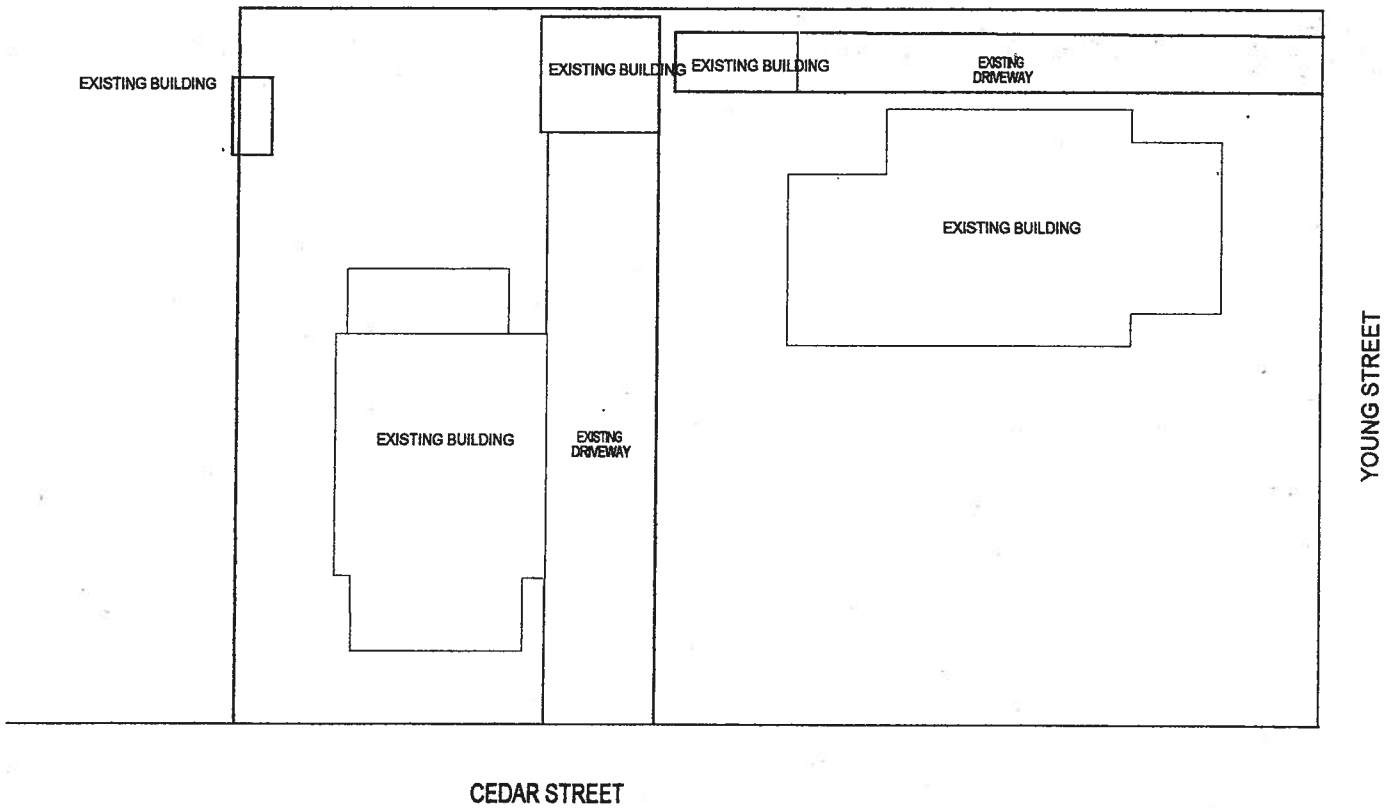


THIS IS SCHEDULE 'A' OF BY-LAW-51-95,  
PASSED THIS 11th DAY OF July, 1995.

MAYOR

*[Handwritten Signature]*  
CLERK

PART LOT 7, G.C.T.  
(FORMER TOWNSHIP OF WOOLWICH,  
COUNTY OF WATERLOO)



THIS IS SCHEDULE 'A' OF BY-LAW \_\_\_\_\_,  
PASSED THIS \_\_\_\_\_ DAY OF \_\_\_\_\_, 19

\_\_\_\_\_ MAYOR

\_\_\_\_\_ CLERK

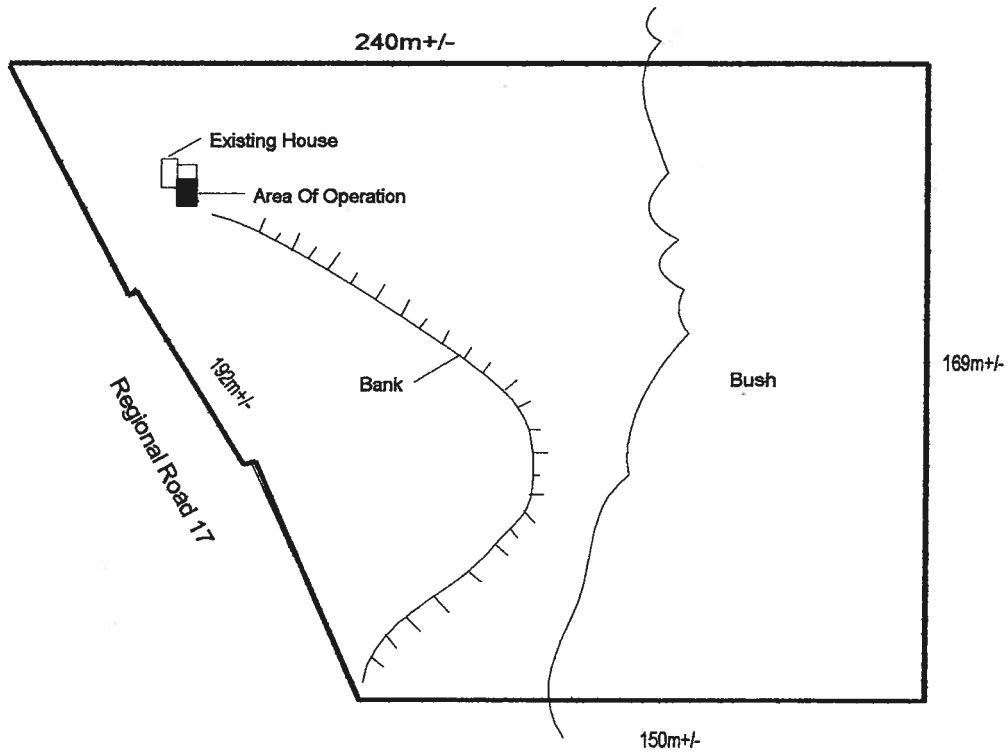
APPROXIMATE SCALE:  
1:280



SECTION 26.1.195

Map 26.1.196 Deleted by By-law 94-2000

Part Lot 71, German Company Tract  
(Former Township Of Woolwich,  
County Of Waterloo)



 SCALE 1:2000

THIS IS SCHEDULE "A" TO BY-LAW \_\_\_\_\_,  
PASSED THIS \_\_\_\_\_ DAY OF \_\_\_\_\_, 199\_\_\_\_\_.

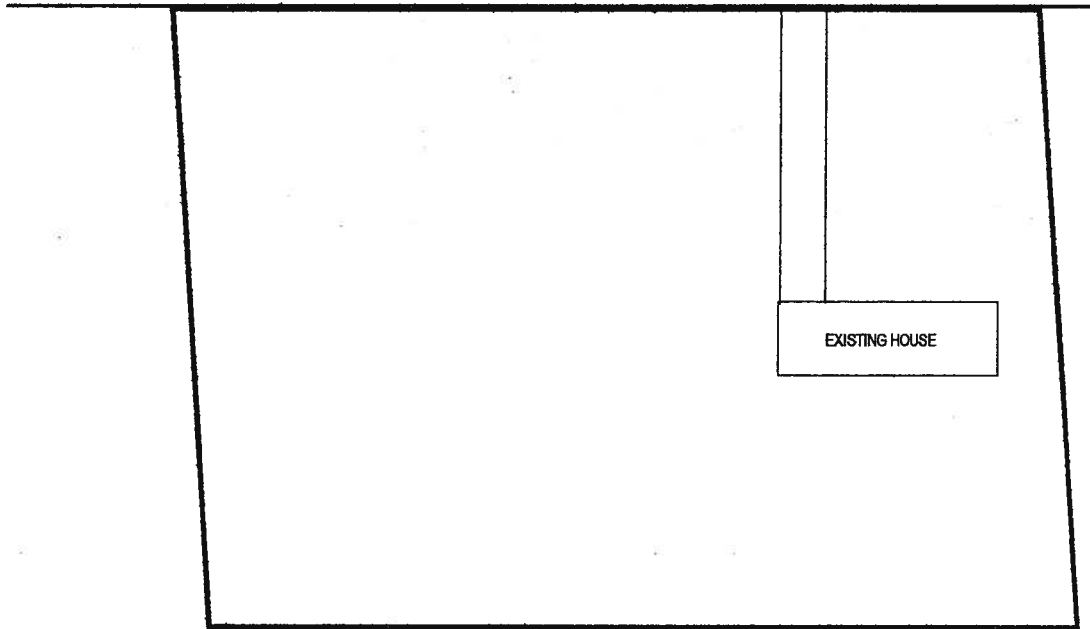
\_\_\_\_\_  
MAYOR

\_\_\_\_\_  
CLERK

SECTION 26.1.197

PART OF LOT 37, G.C.T.  
(FORMER TOWNSHIP OF WOOLWICH,  
COUNTY OF WATERLOO)

HAWKESVILLE ROAD (REGIONAL ROAD 17)



THIS IS SCHEDULE 'A' TO BY-LAW \_\_\_\_\_,

PASSED THIS \_\_\_\_\_ DAY OF \_\_\_\_\_ 19

\_\_\_\_\_  
MAYOR

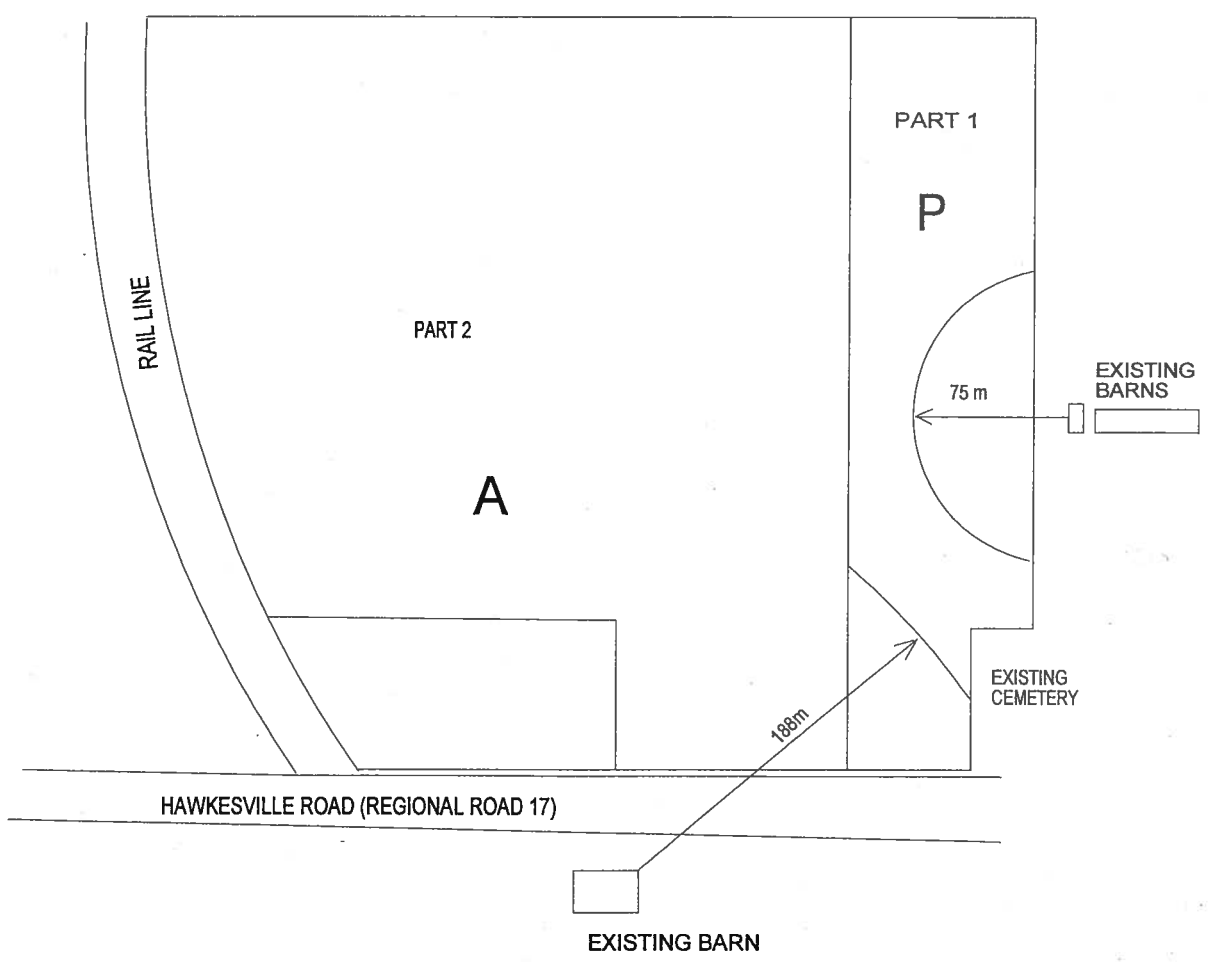
\_\_\_\_\_  
CLERK



APPROXIMATE SCALE  
1:900



PART LOT 37, G.C.T.  
(FORMER TOWNSHIP OF WOOLWICH,  
COUNTY OF WATERLOO)



THIS IS SCHEDULE 'A' OF BY-LAW \_\_\_\_\_,  
PASSED THIS \_\_\_\_\_ DAY OF \_\_\_\_\_, 19

\_\_\_\_\_ MAYOR

\_\_\_\_\_ CLERK



APPROXIMATE SCALE:  
1:3400

SCHEDULE 'A'  
PART LOT 89, 1033 KENNING PLACE  
(Brad Jackson)

