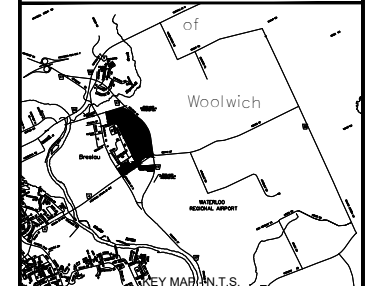


# DRAFT PLAN OF SUBDIVISION

BRESLAU PROPERTIES/  
WALDEN LANDS  
PART OF LOTS 108, 109, 114 AND 115  
GERMANY COMPANY TRACT  
TOWNSHIP OF WOOLWICH,  
REGIONAL MUNICIPALITY OF  
WATERLOO



**BENCHMARK**

**INFORMATION REQUIRED**  
UNDER SECTION 51 (17) OF THE PLANNING ACT, R.S.O. 1990, c.P.13 AS AMENDED

AS SHOWN  
AS SHOWN  
AS SHOWN  
AS LISTED BELOW  
AS SHOWN  
AS SHOWN  
MUNICIPAL WATER  
SANDY LOAM  
AS SHOWN  
MUNICIPAL SANITARY AND STORM SEWERS  
NONE

**SURVEYOR'S CERTIFICATE**  
I HEREBY CERTIFY THAT THE BOUNDARIES OF THE LANDS TO BE SUBDIVIDED ON THIS PLAN AND THEIR RELATIONSHIP TO THE ADJACENT LANDS ARE ACCURATELY AND CORRECTLY SHOWN.

SIGNED:   
Ron Mak, O.L.S.  
Van Harten Surveying Inc., Ontario Land Surveyors  
(Formerly Metz & Lorenz Ltd. Surveyors)  
December 17, 2019

**OWNER'S CERTIFICATE**  
I HEREBY CONSENT TO THE FILING OF THIS PLAN BY POLOCORP. IN DRAFT FORM.

SIGNED:   
John Rose, President  
Breslau Properties Ltd.  
DATE: Nov. 21, 2019

**OWNER'S CERTIFICATE**  
I HEREBY CONSENT TO THE FILING OF THIS PLAN BY POLOCORP. IN DRAFT FORM.

SIGNED:   
Randy Walden, President  
Walden Holdings Ltd.  
DATE: Nov 30, 2019

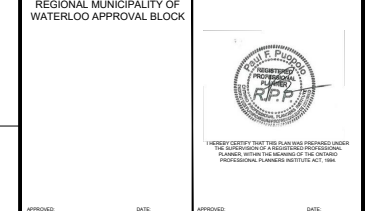
**OWNER'S CERTIFICATE**  
I HEREBY CONSENT TO THE FILING OF THIS PLAN BY POLOCORP. IN DRAFT FORM.

SIGNED:   
Park  
DATE: Nov 21, 2019

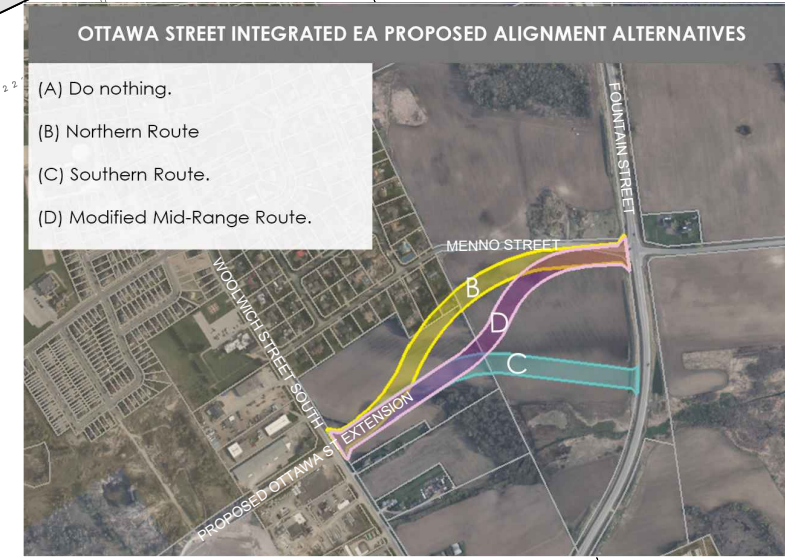
**REVISIONS**

#	DATE	BY	DESCRIPTION
1	2017-04-21	AES	REVISION OF DRAFT PLAN TO INCLUDE DOLMAN/OTTAWA STREET REDESIGN
2	2017-06-12	AES	REVISIONS TO PARKLAND AND SWM
3	2018-01-11	DE	REVISION TO STREET "A" AND STREET "E"
4	2018-01-16	DE	REVISIONS TO MULTI-BLOCKS AND PARKLAND
5	2018-12-17	SR	REVISIONS TO MULTI-BLOCKS AND PARKLAND
6	2019-05-27	DR	REVISIONS TO ROADS AND BLOCKS 21-25, 57
7	2019-07-19	DR	REVISIONS OF DRAFT PLAN TO EXPAND BLOCK 55 AND 57
8	2019-09-26	DR	ALL INTERNAL ROADS REVISED AND BLOCK 37, 58 AND 51
9	2019-11-25	DR	UNIT COUNT REVISED FOR MULTIPLE RESIDENTIAL

**APPROVALS**



DESIGNED BY: OTHERS/AES DATE: NOVEMBER 25, 2019  
DRAWN BY: FILE NUMBER:  
CHECKED BY: SHEET NUMBER:



- OTTAWA STREET INTEGRATED EA PROPOSED ALIGNMENT ALTERNATIVES**
- (A) Do nothing.
  - (B) Northern Route
  - (C) Southern Route.
  - (D) Modified Mid-Range Route.

**LEGEND**

- Study Area for Integrated Class
- EA for Ottawa Street

**SCALE 1:6000**

**LAND USE SCHEDULE - Breslau Properties and Parks**

LOTS/BLOCKS	LAND USE	AREA (ha)	UNITS
Blocks 1-22, 24-38	Single Detached	14.22	288-369
Blocks 39-45	Townhouses	4.52	94-128
Blocks 23, 46-51	Multiple Residential	9.61	452-574
Blocks 52, 53	Stormwater Management Pond	3.44	-
Blocks 54, 55	Parkland	1.61	-
Block 56	Open Space	0.86	-
Block 59-65	Pedestrian Walkway	0.08	-
Block 60	PSW Wetland	6.25	-
Block 61-66	Potential Conveyance to Adjacent Land Owners	0.14	-
	Roads	9.05	-
<b>TOTAL</b>		<b>49.78</b>	<b>834-1071</b>

**LAND USE SCHEDULE - Walden Holdings**

LOTS/BLOCKS	LAND USE	AREA (ha)	UNITS
Block 57	Mixed Use Commercial/Residential	0.83	-
Block 58	Medium Density Residential	3.42	148-186
	Roads	1.26	-
<b>TOTAL</b>		<b>5.52</b>	<b>148-186</b>

